



Industrial Building for Lease

**428 SE FLEETWAY CIRCLE
LEE'S SUMMIT, MISSOURI**

Property Highlights

- 24,000 sf stand-alone industrial building
- 3,000 sf of office and showroom
- 25' clear height
- Clear span building
- Two oversized 12'x18' drive-ins
- Two dock-high doors
- Fenced and lit outside storage
- Great highway access
- Very desirable submarket
- Lease rate \$10.00/sf, NNN

For information, please contact:

Scott Bluhm, SIOR

Senior Managing Director, Principal
t 816-268-4224
sbluhm@nzimmer.com

Justin Beal, CRRP

Executive Managing Director, Principal
t 816-268-4241
jbeal@nzimmer.com

1220 Washington Street, Suite 300
Kansas City, MO 64105

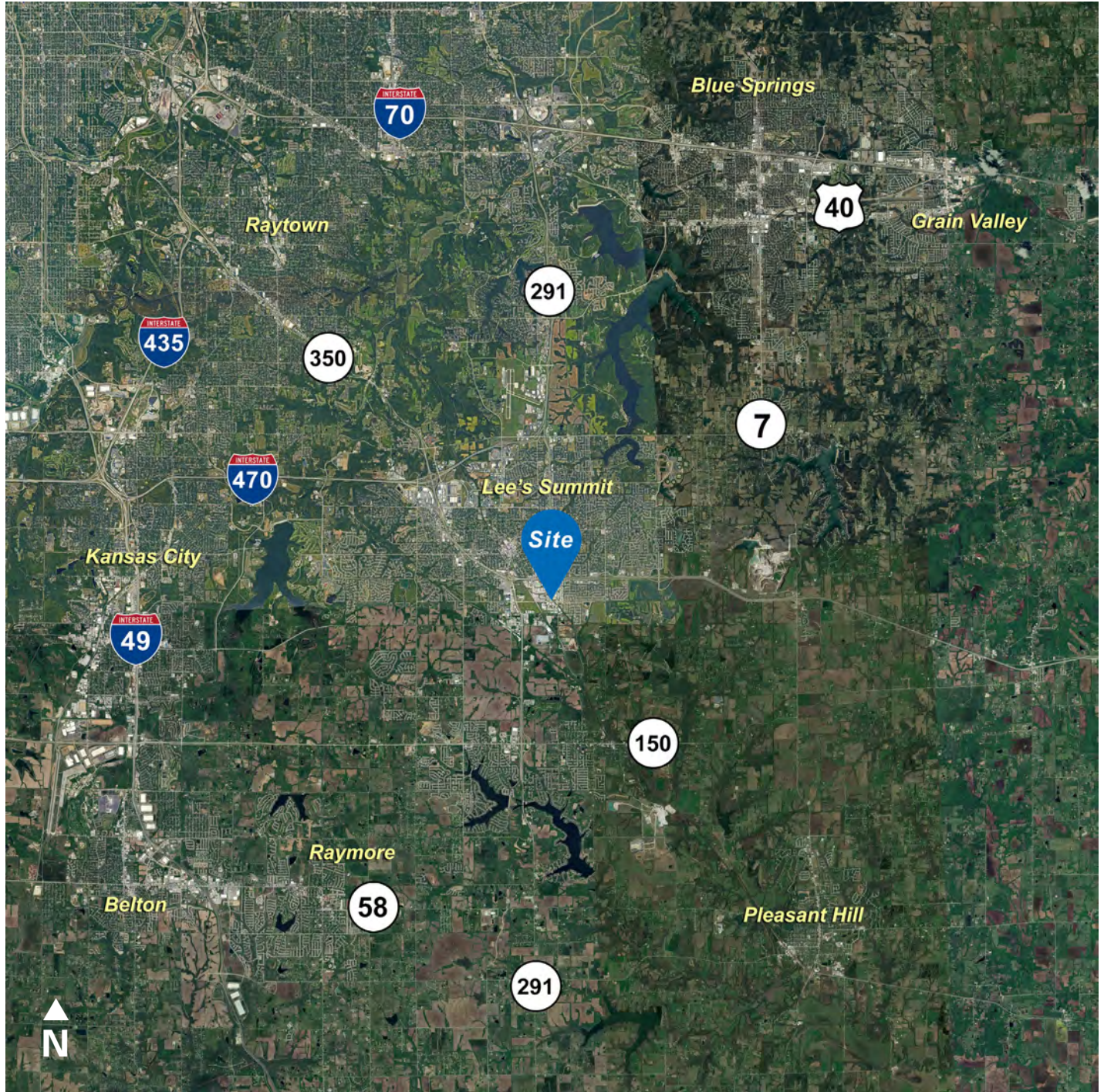
nrmkzimmer.com



NEWMARK
ZIMMER

The information contained herein has been obtained from sources deemed reliable but has not been verified and no guarantee, warranty or representation, either express or implied, is made with respect to such information. Terms of sale or lease and availability are subject to change or withdrawal without notice.

428 SE FLEETWAY CIRCLE, LEE'S SUMMIT, MISSOURI



CONTACT

Scott Bluhm, SIOR

Senior Managing Director, Principal

t 816-268-4224

sbluhm@nzimmer.com

nmrkzimmer.com

Justin Beal, CRRP

Executive Managing Director, Principal

t 816-268-4241

jbeal@nzimmer.com

428 SE FLEETWAY CIRCLE, LEE'S SUMMIT, MISSOURI



CONTACT

Scott Bluhm, SIOR

Senior Managing Director, Principal

t 816-268-4224

sbluhm@nzimmer.com

nmrkzimmer.com

Justin Beal, CRRP

Executive Managing Director, Principal

t 816-268-4241

jbeal@nzimmer.com

NEWMARK
ZIMMER

428 SE FLEETWAY CIRCLE, LEE'S SUMMIT, MISSOURI



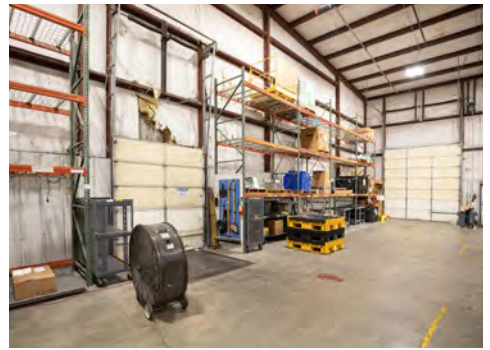
CONTACT

Scott Bluhm, SIOR
Senior Managing Director, Principal
t 816-268-4224
sbluhm@nzimmer.com
nmrkzimmer.com

Justin Beal, CRRP
Executive Managing Director, Principal
t 816-268-4241
jbeal@nzimmer.com

NEWMARK
ZIMMER

428 SE FLEETWAY CIRCLE, LEE'S SUMMIT, MISSOURI



CONTACT

Scott Bluhm, SIOR
Senior Managing Director, Principal
t 816-268-4224
sbluhm@nzimmer.com

Justin Beal, CRRP
Executive Managing Director, Principal
t 816-268-4241
jbeal@nzimmer.com

nmrkzimmer.com

NEWMARK
ZIMMER