



10 +/- Acres HWY 380, Denton, TX 76207

PROPERTY DETAILS

\$6,534,000

600 ft of Hwy 380 Frontage

Commercial Use/Zoned Light Industrial

No Known Restrictions

Electric Available, City Water, No Sewer

Planned future SW Corner of Loop 288 Expansion

2 miles from I35



Everette Newland

940-565-8326

ew@northtexasrealestate.com



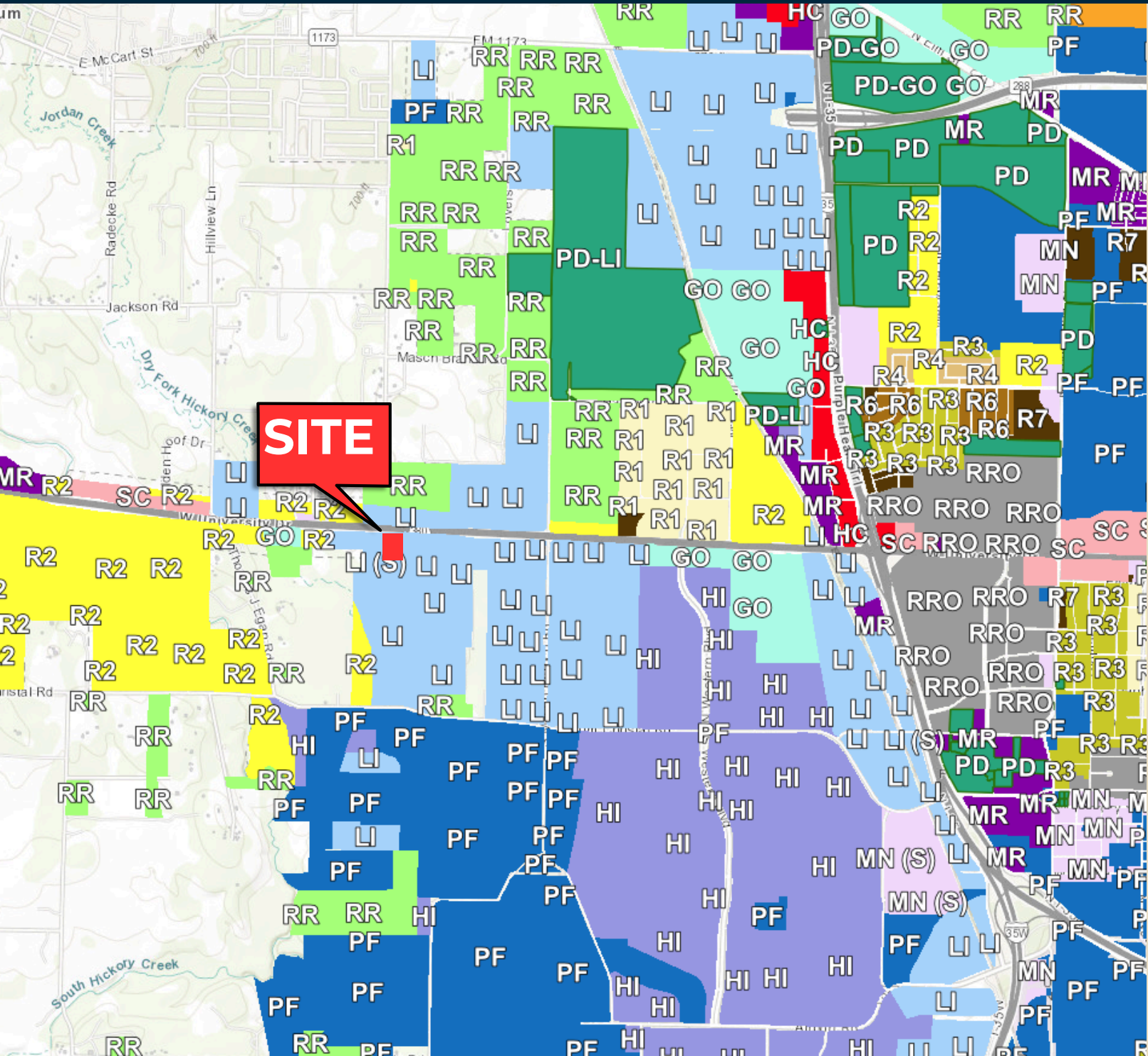
10 +/- Acres HWY 380, Denton, TX 76207

Located in a strategic area, of high growth, with several large subdivisions and MUD districts in active and future construction. One of the fastest growing counties in the USA.



Everette Newland
940-565-8326
ew@northtexasrealestate.com

ZONING MAP



LIGHT INDUSTRIAL

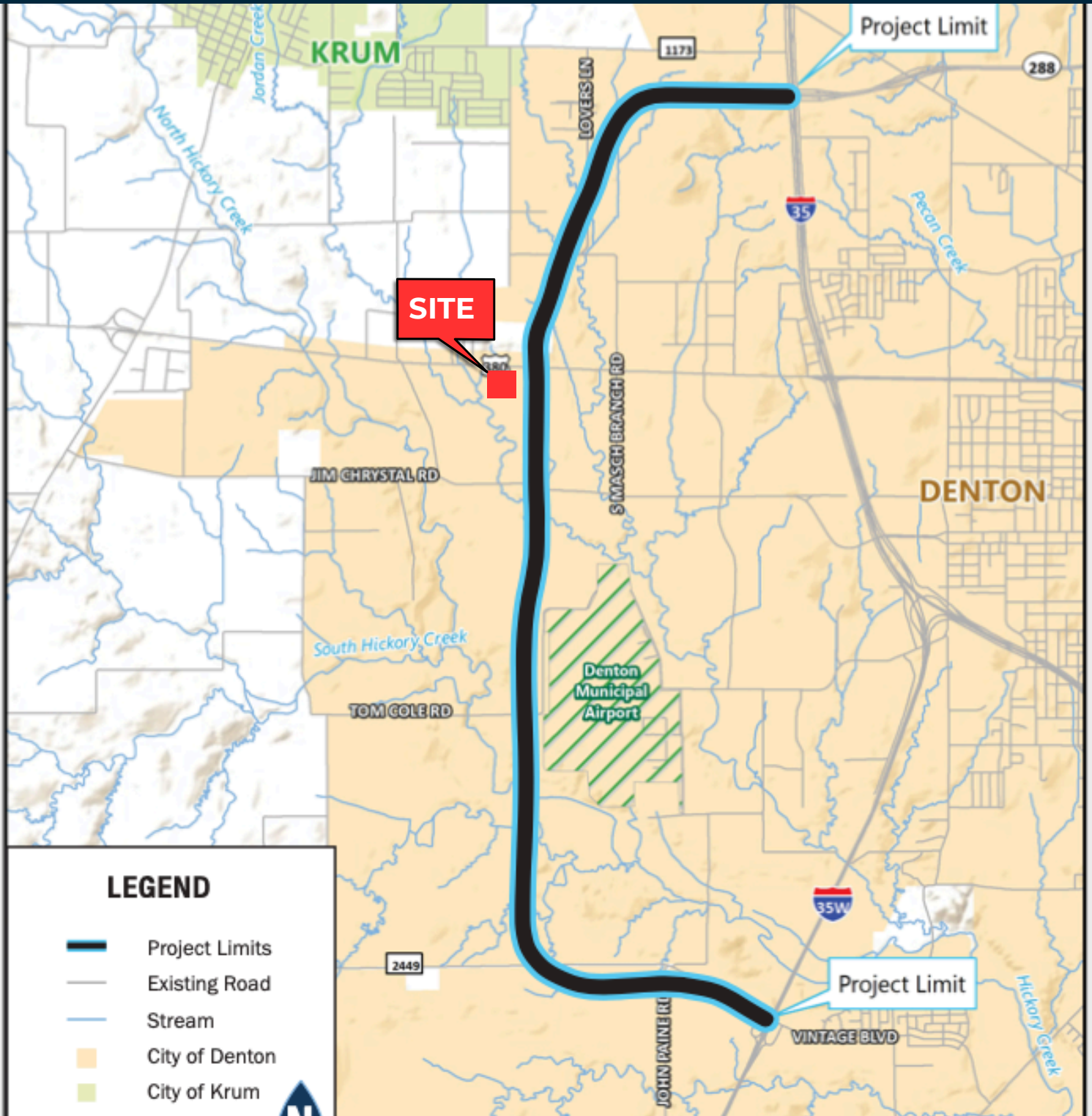


Everette Newland

940-565-8326

ew@northtexasrealestate.com

LOOP 288 EXPANSION



Everette Newland

940-565-8326

ew@northtexasrealestate.com