



**Keegan & Coppin**  
COMPANY, INC.

FOR LEASE

201 ALAMEDA DEL PRADO  
NOVATO, CA

**BEAUTIFULLY UPGRADED  
IMPRESSIVE OFFICE SPACE**



Go beyond broker.

PRESENTED BY:

**JEFFREY WILMORE, PARTNER**  
LIC # 01241054 (415) 461-1010, EXT 119  
[JWILMORE@KEEGANCOPPIN.COM](mailto:JWILMORE@KEEGANCOPPIN.COM)

**THEO BANKS, PARTNER**  
LIC # 013596065 (415) 461-1010, EXT 130  
[TBANKS@KEEGANCOPPIN.COM](mailto:TBANKS@KEEGANCOPPIN.COM)





## PROPERTY DETAILS



201 ALAMEDA DEL PRADO  
NOVATO, CA

**BEAUTIFUL MODERN  
OFFICE SPACE FOR  
LEASE**

## PROPERTY INFORMATION

### HIGHLIGHTS

- Beautifully upgraded space with modern lighting, paint, and carpet
- Impressive high quality lobby with renovated elevators and restrooms
- Outside seating area surrounded by beautiful oak trees in a woodside setting
- **Call brokers for lease incentives**

### OFFICE SPACE

**Suite 203:** 2,598+/- sq ft

### DESCRIPTION

Reception area with adjacent conference room, two private offices, open area with nice glass line and kitchenette.

### LEASE TERMS

#### Rate

\$2.45 per sq ft

#### Terms

Full service

#### Parking

On-site

#### Total Building Size

32,353+/- sq ft

### COVID-19 ATTRIBUTES

- Operable windows (allows for outside air)
- Outside seating area
- Janitorial service conforming to OSHA Covid-19 guidelines with enhanced sanitation

#### PRESENTED BY:

JEFFREY WILMORE, PARTNER  
KEEGAN & COPPIN CO., INC.  
LIC # 01241054 (415) 461-1010, EXT 119  
JWILMORE@KEEGANCOPPIN.COM

THEO BANKS, PARTNER  
KEEGAN & COPPIN CO., INC.  
LIC # 013596065 (415) 461-1010, EXT 130  
TBANKS@KEEGANCOPPIN.COM



## AREA DESCRIPTION



201 ALAMEDA DEL PRADO  
NOVATO, CA

**BEAUTIFUL MODERN  
OFFICE SPACE FOR  
LEASE**

### DESCRIPTION OF AREA

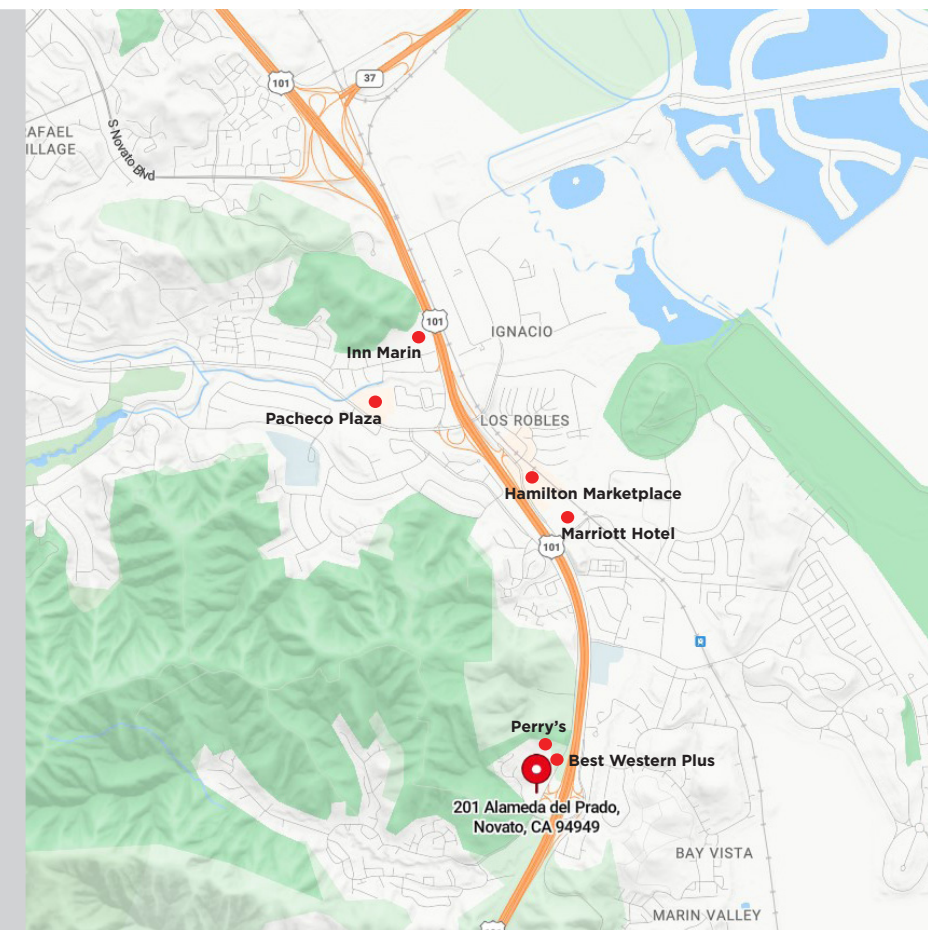
201 Alameda del Prado has excellent identity with freeway visibility and easy access to Highway 101. Close access to public transportation and the SMART train. Short distance to many amenities.

### NEARBY AMENITIES

- Short distance to many amenities
  - Hamilton Marketplace with Safeway, Peet's Coffee, Super Duper Burger, Nektar Juice Bar
  - Pacheco Plaza Shopping Center with Mamita Cocina, Nugget Market, UPS
- Inn Marin
- Marriott Hotel
- Perry's
- Best Western Plus
- Check with Brokers for Leasing Incentives

### TRANSPORTATION ACCESS

- Immediate access to Highway 101
- Close proximity to public transportation and the
- SMART train



#### PRESENTED BY:

JEFFREY WILMORE, PARTNER  
KEEGAN & COPPIN CO., INC.  
LIC # 01241054 (415) 461-1010, EXT 119  
JWILMORE@KEEGANCOPPIN.COM

THEO BANKS, PARTNER  
KEEGAN & COPPIN CO., INC.  
LIC # 013596065 (415) 461-1010, EXT 130  
TBANKS@KEEGANCOPPIN.COM





# PROPERTY PHOTOS

## LOBBY & SUITE 203 INTERIOR



201 ALAMEDA DEL PRADO  
NOVATO, CA

**BEAUTIFUL MODERN  
OFFICE SPACE FOR  
LEASE**



BUILDING ENTRANCE LOBBY



### PRESENTED BY:

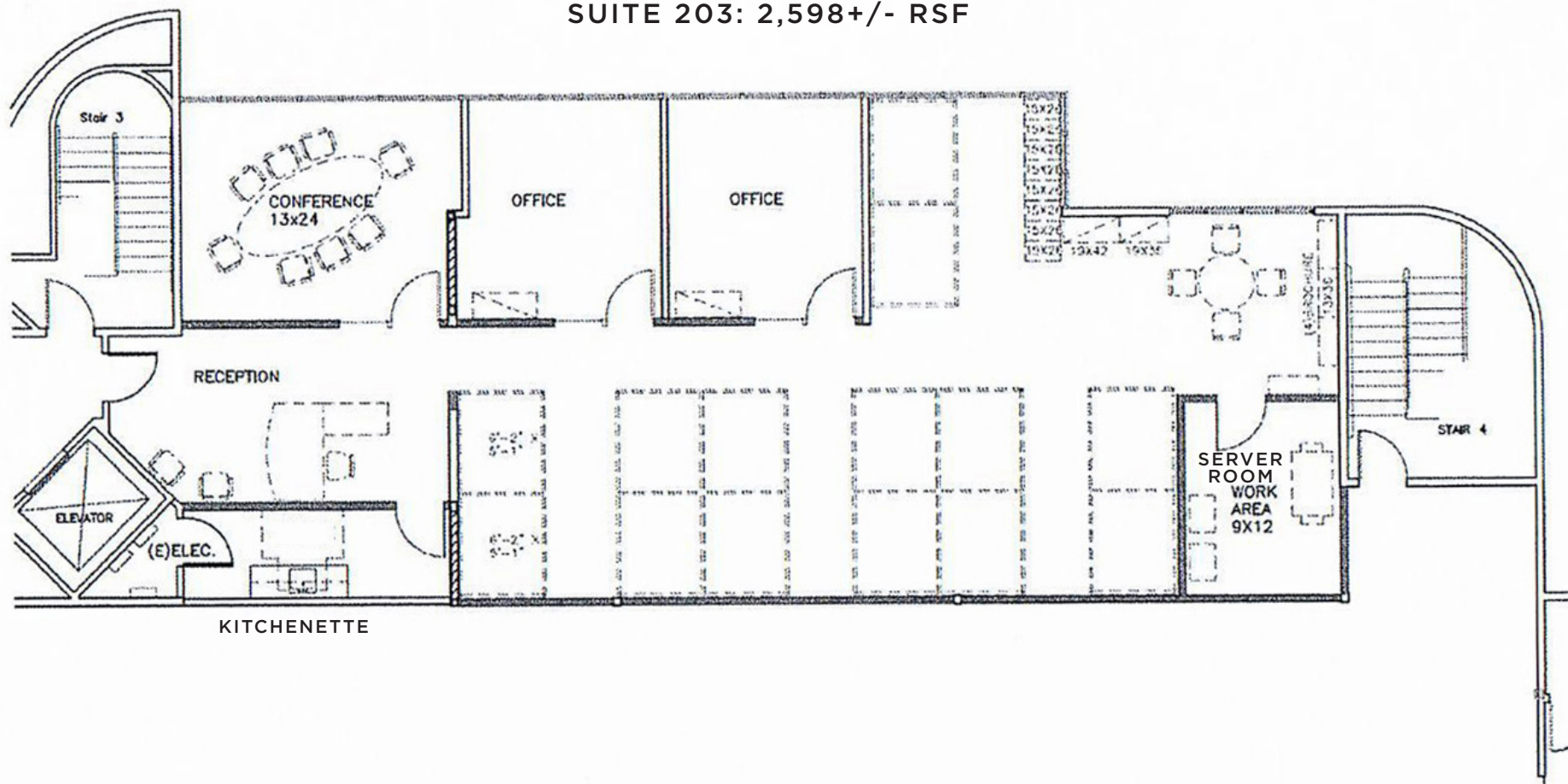
**JEFFREY WILMORE, PARTNER**  
**KEEGAN & COPPIN CO., INC.**  
LIC # 01241054 (415) 461-1010, EXT 119  
JWILMORE@KEEGANCOPPIN.COM

**THEO BANKS, PARTNER**  
**KEEGAN & COPPIN CO., INC.**  
LIC # 013596065 (415) 461-1010, EXT 130  
TBANKS@KEEGANCOPPIN.COM



## BEAUTIFUL MODERN OFFICE SPACE FOR LEASE

**SUITE 203: 2,598+/- RSF**



**JEFFREY WILMORE, PARTNER**  
**KEEGAN & COPPIN CO., INC.**  
 LIC # 01241054 (415) 461-1010, EXT 119  
**JWILMORE@KEEGANCOPPIN.COM**

**THEO BANKS, PARTNER  
KEEGAN & COPPIN CO., INC.  
LIC # 013596065 (415) 461-1010, EXT 130  
TBANKS@KEEGANCOPPIN.COM**



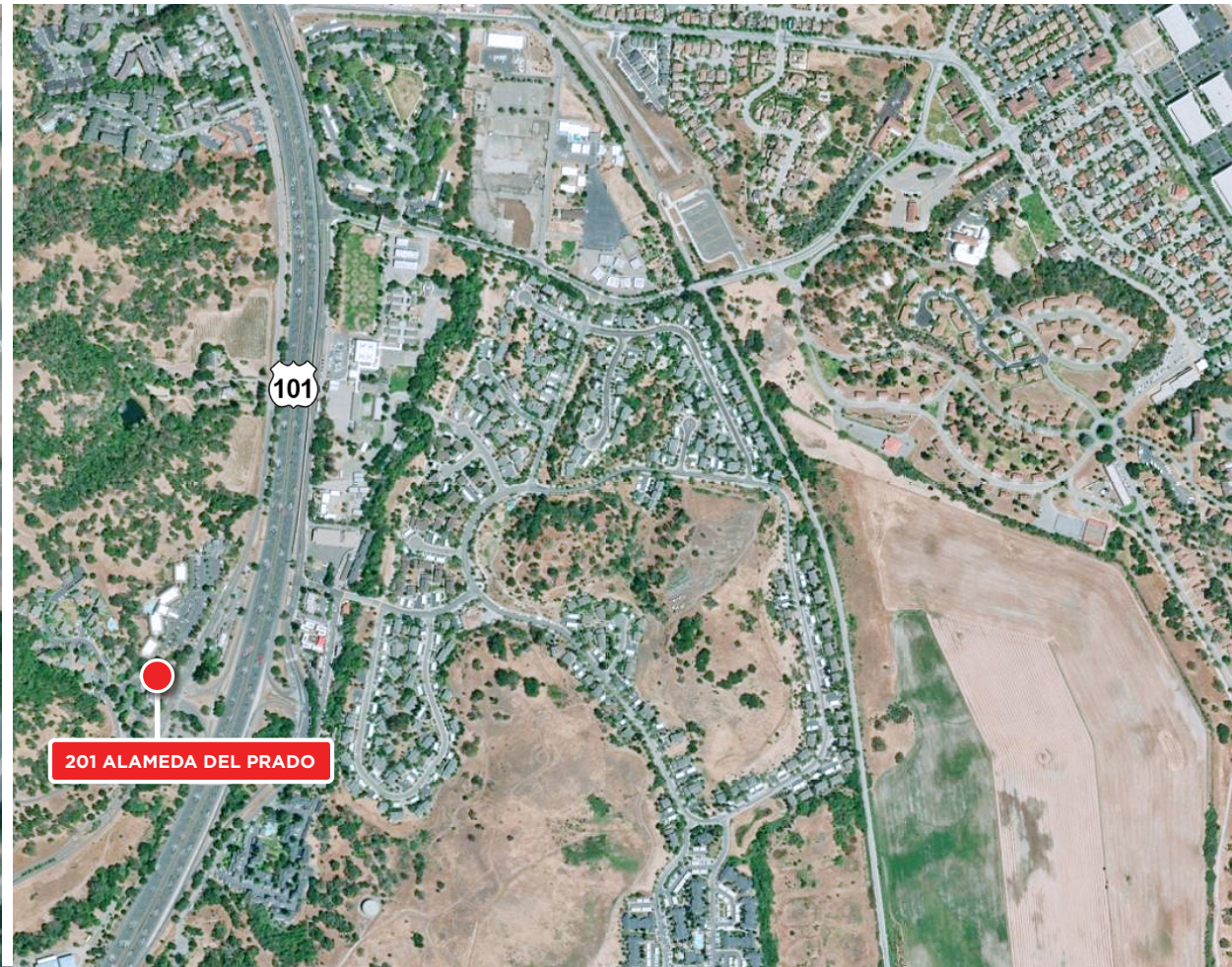


## LOCATION MAP



201 ALAMEDA DEL PRADO  
NOVATO, CA

**BEAUTIFUL MODERN  
OFFICE SPACE FOR  
LEASE**



Keegan & Coppin Co., Inc.  
1355 North Dutton Avenue  
Santa Rosa, CA 95401

**PRESENTED BY:** JEFFREY WILMORE, PARTNER  
www.keegancoppin.com  
LIC # 01241054 (415) 461-1010, EXT 119  
(707) 528-1400

THEO BANKS, PARTNER  
KEEGAN & COPPIN CO., INC.  
LIC # 013596065 (415) 461-1010, EXT 130  
TBANKS@KEEGANCOPPIN.COM

REPRESENTED BY:

**JEFFREY WILMORE, PARTNER**  
LIC # 01241054 (415) 461-1010, EXT 119  
JWILMORE@KEEGANCOPPIN.COM

**THEO BANKS, PARTNER**  
LIC # 013596065 (415) 461-1010, EXT 130  
TBANKS@KEEGANCOPPIN.COM

The above information, while not guaranteed, has been secured from sources we believe to be reliable. Submitted subject to error, change or withdrawal. An interested party should verify the status of the property and the information herein.

The above information, while not guaranteed, has been secured from sources we believe to be reliable. Submitted subject to error, change or withdrawal. An interested party should verify the status of the property and the information herein.