

# 101 S Elm St Suite 310

GREENSBORO, NC

## OFFICE SPACE SUB-LEASE

CALL FOR  
PRICING



## PROPERTY HIGHLIGHTS

- Suite 310 - 3,497 RSF
- Sublease through late 2026 or blend with new lease up to 5 years.
- Full-service lease with exceptional building services
- Suite offers open area with existing cubicles, large conference room, private offices and meeting areas (furniture available)
- Fresh finishes throughout
- Prominent Downtown Greensboro building conveniently located near city and county services, parking decks and variety of dining options
- A short walk to the Steven Tanger Center for Performing Arts, LeBauer Park, Greensboro Cultural Arts Center, International Civil Rights Center and Museum



**NAI Piedmont Triad**  
Commercial Real Estate Services, World Wide

**RICHARD CLARKE, MBA**

BROKER

239.628.8335

rlarke@naipt.com

348 N. Elm Street • Greensboro, NC 27401 • naipt.com



The information contained herein is deemed reliable but is not guaranteed. NAI Piedmont Triad makes no warranties or representations regarding the accuracy, completeness, or reliability of the information. All parties are encouraged to independently verify all details, including but not limited to property condition, terms, and financial projections. Prices, terms, and availability are subject to change without notice.

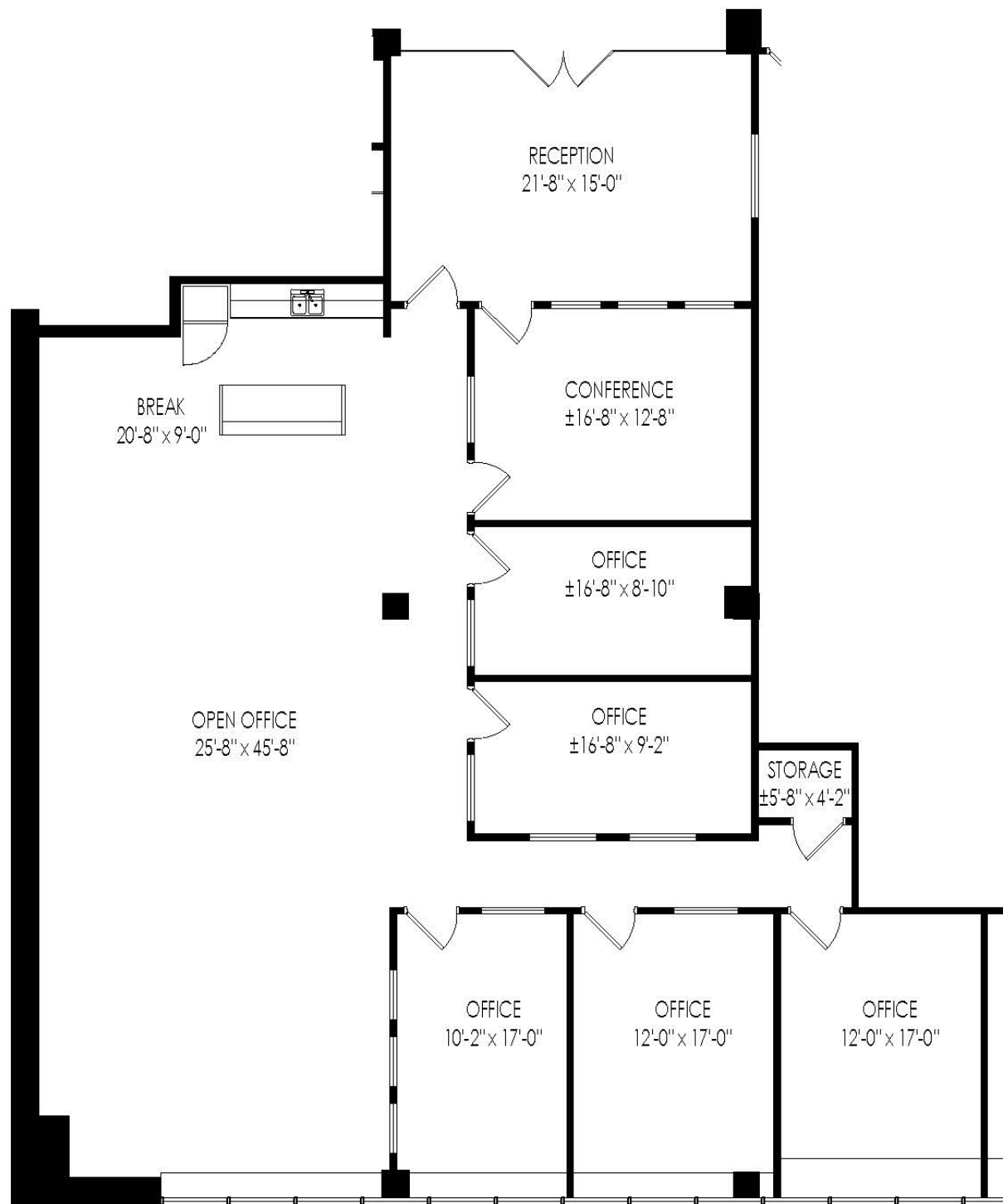
**RICHARD CLARKE, MBA**

BROKER

239.628.8335

[rlarke@naipt.com](mailto:rlarke@naipt.com)

348 N. Elm Street • Greensboro, NC 27401 • [naipt.com](http://naipt.com)



The information contained herein is deemed reliable but is not guaranteed. NAI Piedmont Triad makes no warranties or representations regarding the accuracy, completeness, or reliability of the information. All parties are encouraged to independently verify all details, including but not limited to property condition, terms, and financial projections. Prices, terms, and availability are subject to change without notice.

**RICHARD CLARKE, MBA**

BROKER

239.628.8335

[rlarke@naipt.com](mailto:rlarke@naipt.com)

348 N. Elm Street • Greensboro, NC 27401 • [naipt.com](http://naipt.com)



The information contained herein is deemed reliable but is not guaranteed. NAI Piedmont Triad makes no warranties or representations regarding the accuracy, completeness, or reliability of the information. All parties are encouraged to independently verify all details, including but not limited to property condition, terms, and financial projections. Prices, terms, and availability are subject to change without notice.

**RICHARD CLARKE, MBA**

BROKER

239.628.8335

rolarke@naipt.com

348 N. Elm Street • Greensboro, NC 27401 • naipt.com