

RESOURCE BUILDING

# 2752 6th Ave S

Seattle, WA 98134

5,000 - 22,558 SF | \$12.00/SF/YR | Divisible

FOR LEASE



BUILDING SIZE

22,558 SF

RENTAL RATE

\$12.00/SF/YR

YEAR BUILT

1945

LEASE TYPE

Triple Net (NNN)

EXCLUSIVELY MARKETED BY:

Darrell Sanders

(206) 910-5213 | Darrells@americanlifeinc.com

Kenneth Clark

(206) 971-7824 | Ken.Clark@americanlifeinc.com

Eric Haber

(206) 940-7525 | Eric.Haber@americanlifeinc.com



# PROPERTY OVERVIEW

Full building available to warehouse / industrial user. Excellent access to I-5 & I-90 and SODO Light Rail. Dock and street level access plus mezzanine and ground level access. Includes fenced in secured yard space in the rear of property.

The Resource Building is a 22,558 SF industrial warehouse built in 1945, ideally located in Seattle's SODO industrial core with proximity to major freight corridors and the Port of Seattle.

## KEY HIGHLIGHTS

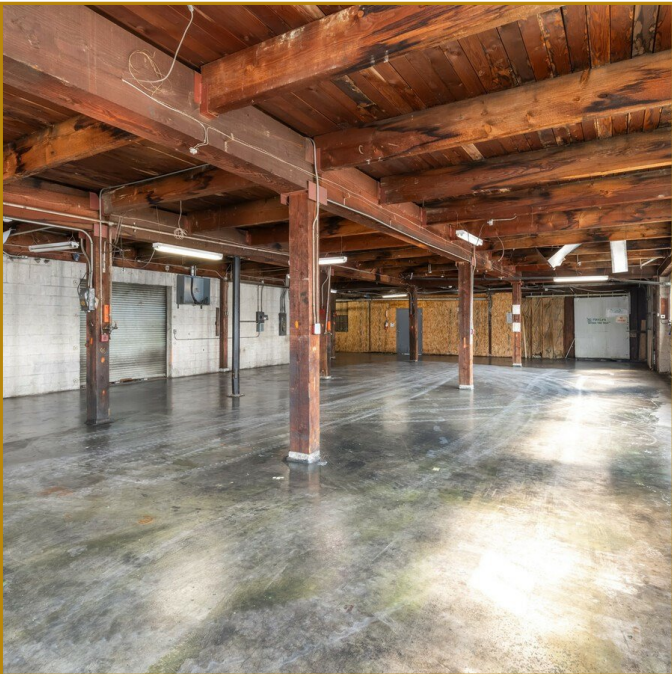
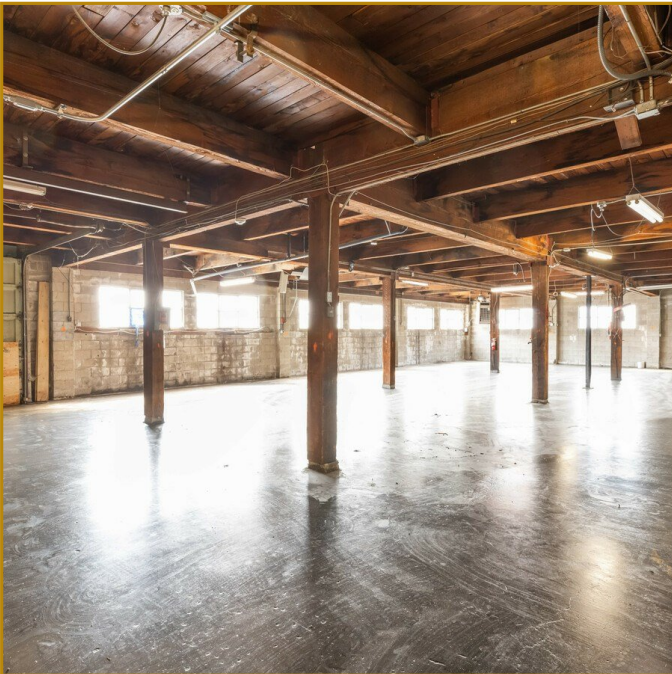
Dock + street level access | Mezzanine level  
Fenced secured yard space in rear  
Excellent I-5, I-90, SODO Light Rail access  
Industrial / Warehouse | Triple Net (NNN)  
Negotiable lease terms

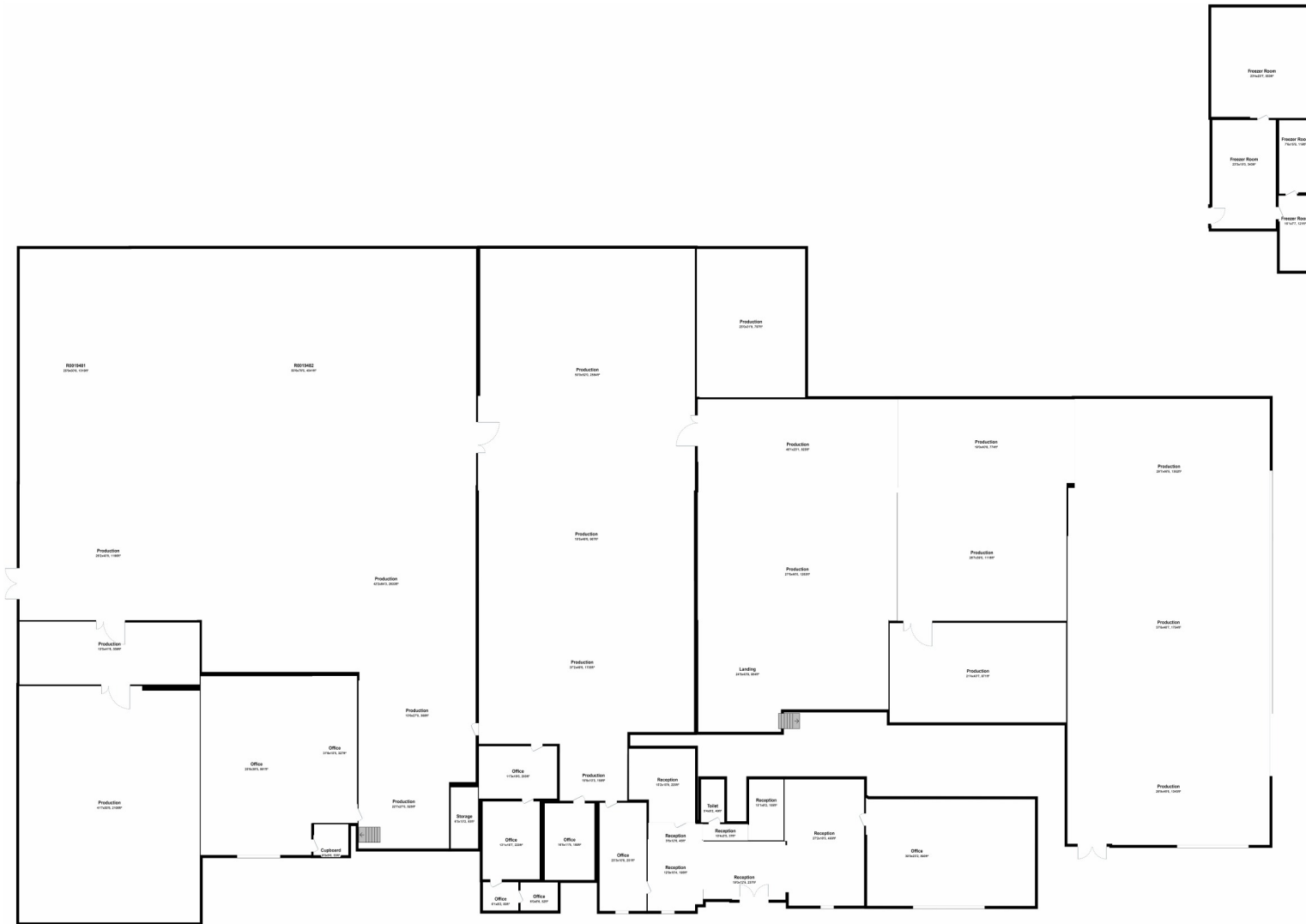


## PROPERTY DETAILS

DETAIL	VALUE
Rental Rate	\$12.00/SF/YR (\$1.00/SF/MO)
Property Type	Industrial
Subtype	Warehouse
Rentable Area	22,558 SF
Year Built	1945
Service Type	Triple Net (NNN)
Space Available	5,000-22,558 SF (Divisible)
Lease Term	Negotiable
Access	Dock + Street + Mezzanine
Yard	Fenced secured rear yard

# INTERIOR PHOTOS

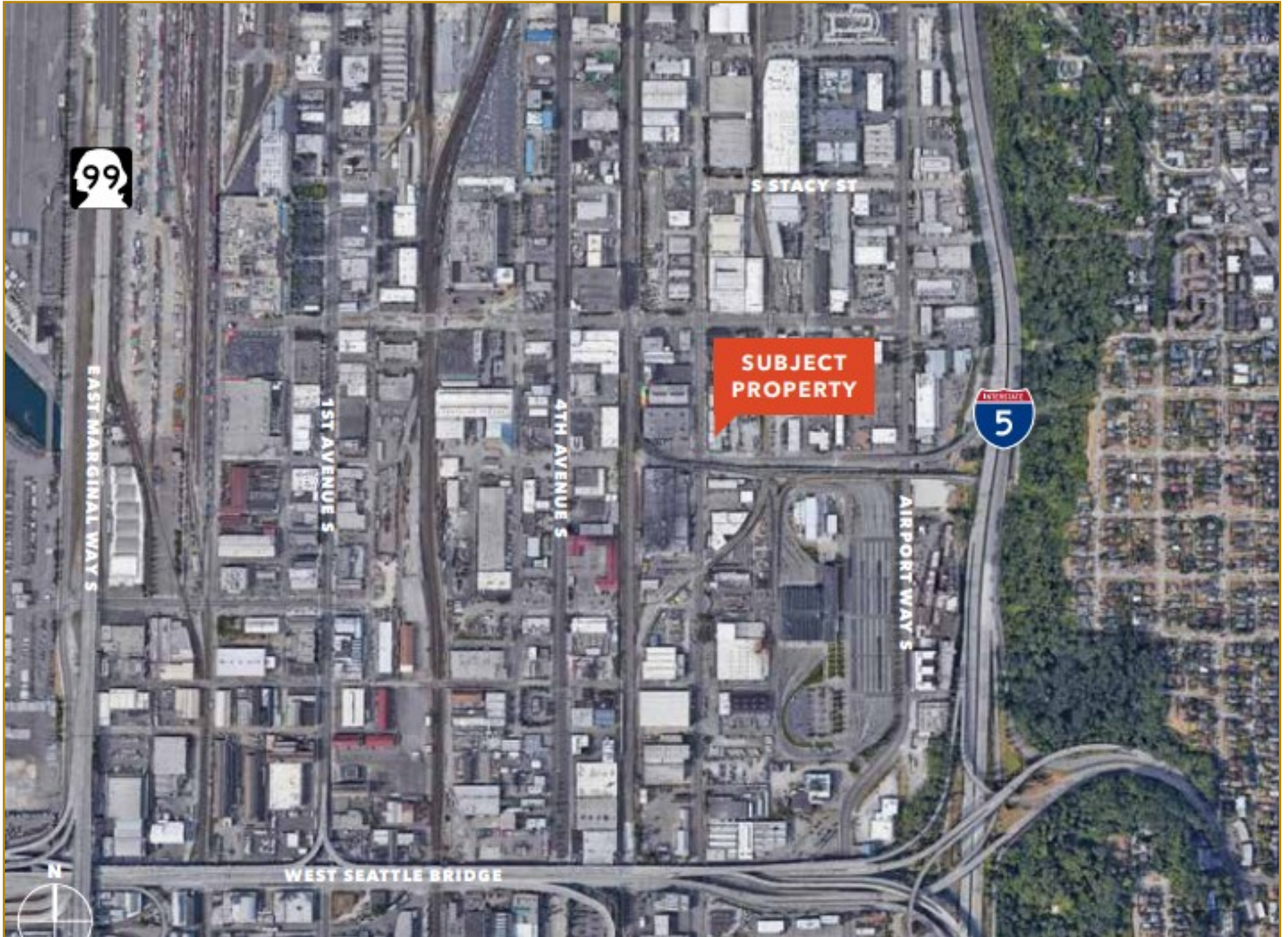




For illustration purposes only. Not to scale.

## Ground Floor

# LOCATION





**EXCLUSIVELY MARKETED BY**

**Darrell Sanders**

(206) 910-5213 | [Darrells@americanlifeinc.com](mailto:Darrells@americanlifeinc.com)

**Kenneth Clark**

(206) 971-7824 | [Ken.Clark@americanlifeinc.com](mailto:Ken.Clark@americanlifeinc.com)

**Eric Haber**

(206) 940-7525 | [Eric.Haber@americanlifeinc.com](mailto:Eric.Haber@americanlifeinc.com)