

# FOR LEASE

## 5,294 SF

FOOD BUILDING  
\$2.10 GROSS PSF



1701

**1ST STREET**

SAN FERNANDO, CA

### PROPERTY HIGHLIGHTS



FDA/FOOD  
PREPARATION FACILITY



COLD STORAGE  
& FLOOR DRAINS



16' MINIMUM CLEARANCE



FIRE SPRINKLER SYSTEM



CITY OF SAN FERNANDO  
BENEFITS



[spectrumcre.com](http://spectrumcre.com) | 818.252.9900

**SPECTRUM**  
COMMERCIAL REAL ESTATE, INC.



#### ART MINASSIAN

Senior Vice President  
818.634.3722  
[art@availablewarehouses.com](mailto:art@availablewarehouses.com)  
CA DRE Lic. #02026662



#### RON KASSAN

Executive Vice President  
818.512.5001  
[ron@availablewarehouses.com](mailto:ron@availablewarehouses.com)  
CA DRE Lic. #01063078

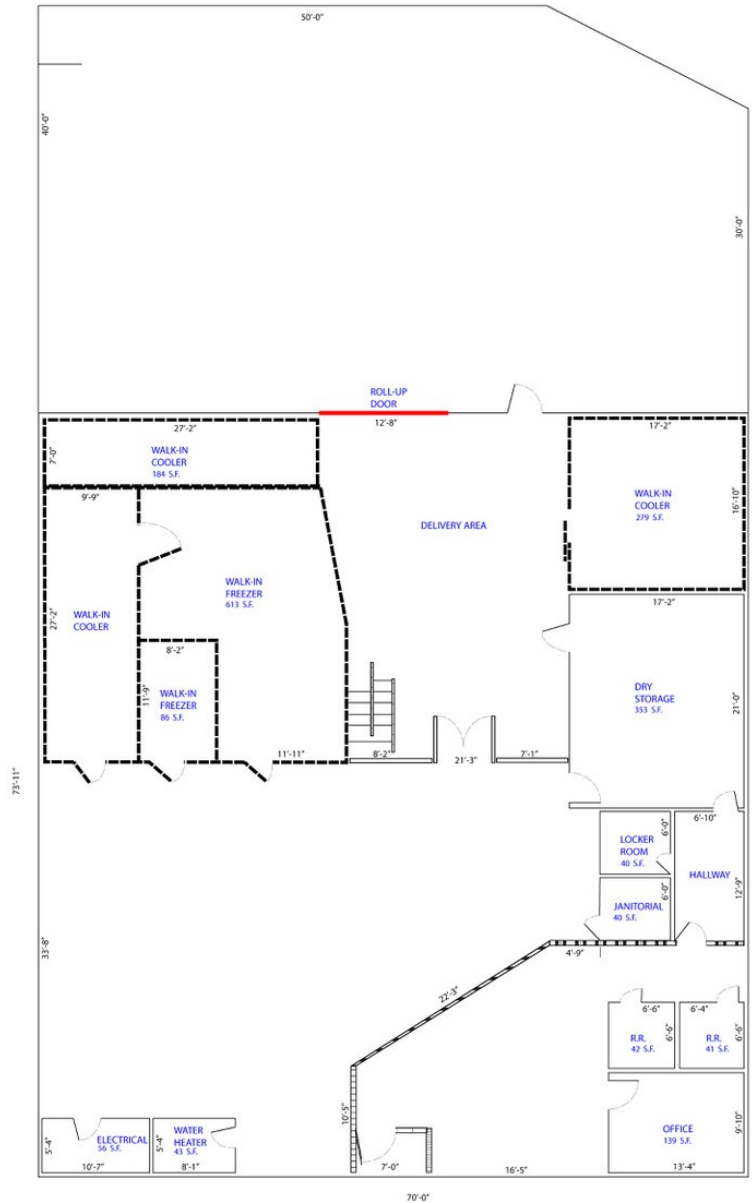


No warranty, express or implied, is made as to the accuracy of the information contained herein. This information is submitted subject to errors, omission, change of price, rental or other conditions, withdrawal without notice, and is subject to any special listing conditions imposed by our principals. Cooperating brokers, buyers, tenants and other parties who receive this document should not rely on it, but should use it as a starting point of analysis, and should independently confirm the accuracy of the information contained herein through a due diligence review of the books, records, files and documents that constitute reliable sources of the information described herein. Spectrum Commercial Real Estate, Inc. CA DRE #02042805





1701  
**1ST STREET**  
SAN FERNANDO, CA



[spectrumcre.com](http://spectrumcre.com) | 818.252.9900

**SPECTRUM**  
COMMERCIAL REAL ESTATE, INC.



**ART MINASSIAN**

Senior Vice President  
818.634.3722

[art@availablewarehouses.com](mailto:art@availablewarehouses.com)  
CA DRE Lic. #02026662



**RON KASSAN**

Executive Vice President  
818.512.5001

[ron@availablewarehouses.com](mailto:ron@availablewarehouses.com)  
CA DRE Lic. #01063078



No warranty, express or implied, is made as to the accuracy of the information contained herein. This information is submitted subject to errors, omission, change of price, rental or other conditions, withdrawal without notice, and is subject to any special listing conditions imposed by our principals. Cooperating brokers, buyers, tenants and other parties who receive this document should not rely on it, but should use it as a starting point of analysis, and should independently confirm the accuracy of the information contained herein through a due diligence review of the books, records, files and documents that constitute reliable sources of the information described herein. Spectrum Commercial Real Estate, Inc. CA DRE #02042805