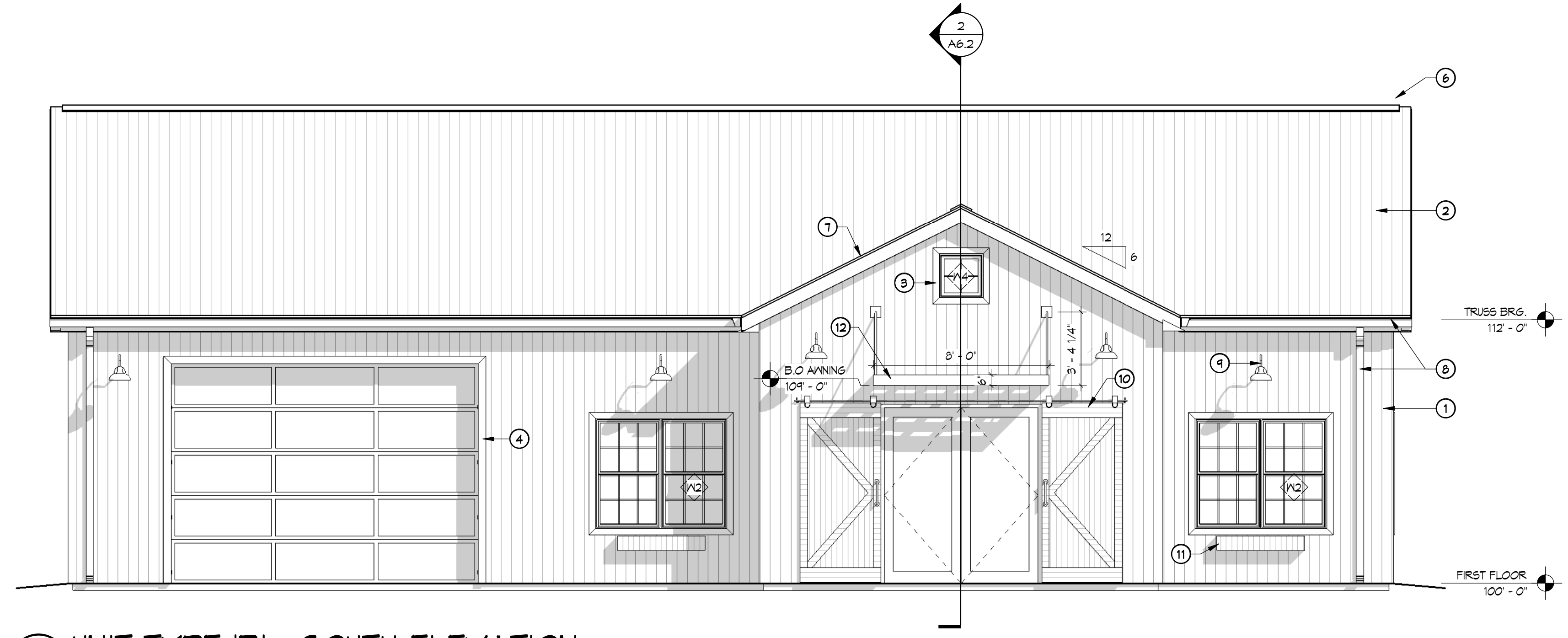
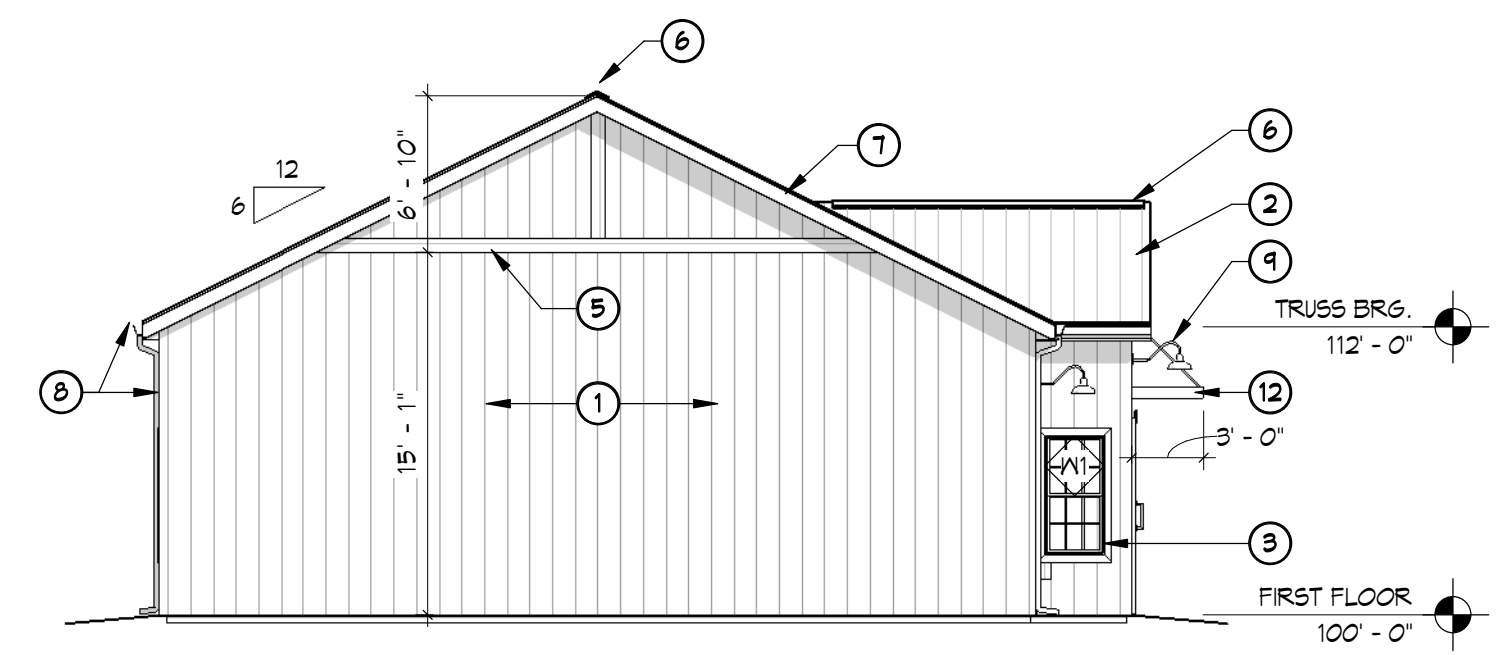


7/19/2019 9:41:23 AM C:\Users\Aaron\Documents\15-010 Meier Companies Office-Condo\_CDs\_A\_\ar01phinson.rvt

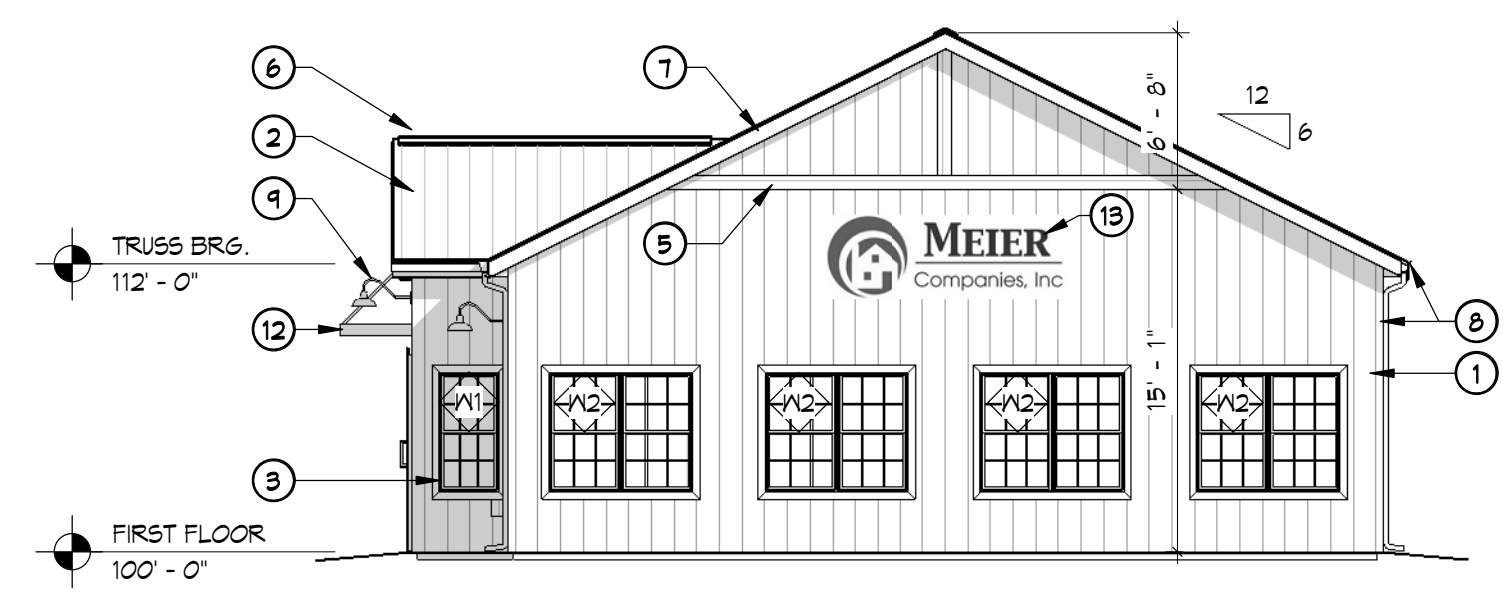
- ELEVATION KEYNOTES**
- 1 PRE-FIN METAL SIDING (TYP. - SELECTED BY OWNER)
  - 2 STANDING SEAM METAL ROOFING (SELECTED BY OWNER)
  - 3 4" WINDOW TRIM (TYP.)
  - 4 4" DOOR TRIM (TYP.)
  - 5 8' GABLE END TRIM (TYP.)
  - 6 CONTINUOUS RIDGE VENT (TYP.)
  - 7 PRE-FIN ALUMINUM FASCIA (TYP.)
  - 8 GUTTER AND DOWNSPOUT (SEE ROOF PLAN)
  - 9 INDUSTRIAL GOOSE NECK LIGHT FIXTURE (TYP.)
  - 10 T-4' X 8'-2" NON-OPERABLE DECORATIVE BARN DOOR & TRACK (SELECTED BY OWNER)
  - 11 CEDAR WINDOW PLANTER BOX (SELECTED BY OWNER)
  - 12 PRE-FIN LOUVERED ALUMINUM AWNING IV TIE RODS
  - 13 MEIER COMPANIES LOGO "BURNED" INTO SIDING



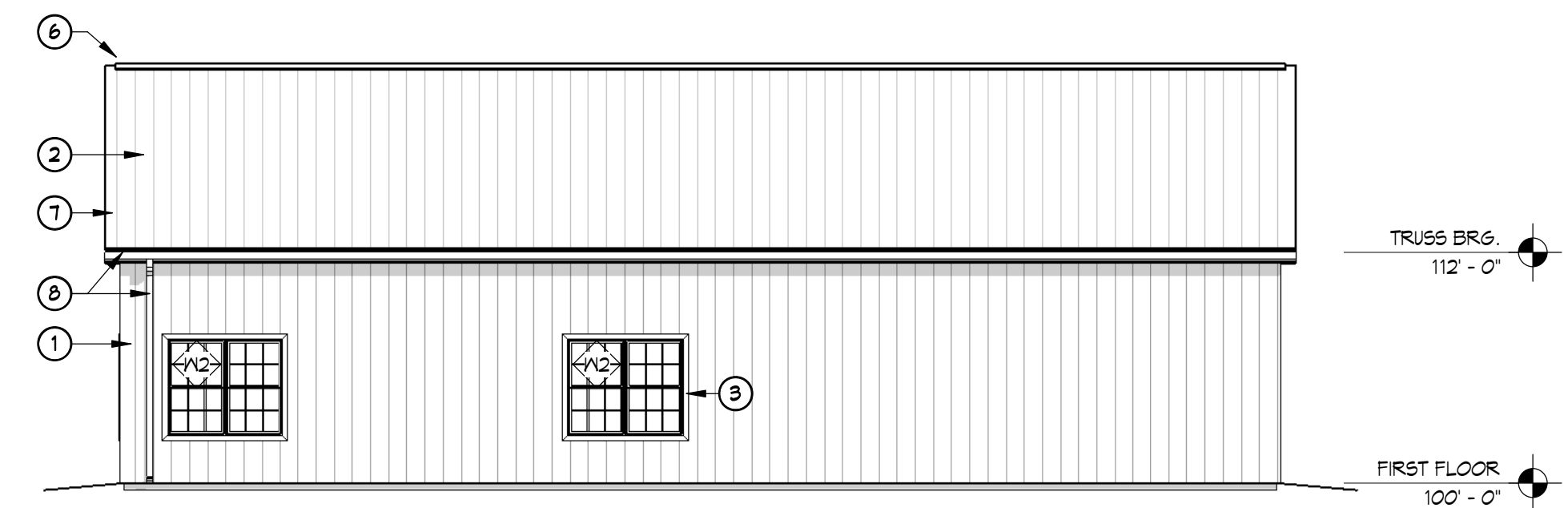
**1 UNIT TYPE 'B' - SOUTH ELEVATION**  
 A5.3 1/4" = 1'-0"



**2 UNIT TYPE 'B' - WEST ELEVATION**  
 A5.3 1/8" = 1'-0"



**3 UNIT TYPE 'B' - EAST ELEVATION**  
 A5.3 1/8" = 1'-0"



**4 UNIT TYPE 'B' - NORTH ELEVATION**  
 A5.3 1/8" = 1'-0"

FOR CONSTRUCTION - CITY OF ROCHESTER SUBMITTAL - ADDENDUM #1 - 07.19.2019

3300 BIRCH STREET, SUITE 1A  
 EAU CLAIRE, WI 54703  
 PHONE: 715.832.0875  
 www.rivervalleyarchitects.com

3300 Birch Street, Suite 1A, Eau Claire, WI 54703  
 715-832-0875

PROPOSED OFFICE/WAREHOUSE CONDOS  
 MEIER COMPANIES  
 ROME CIRCLE NW - LOT 1  
 ROCHESTER, MN 55901

DATE:	01.19.2019
MARK:	DATE
SHEET NO.	
<b>A5.3</b>	
DRAWN BY:	
ACJ	
JOB NO.	
12-010	