

FOR SALE

2.4 ACRES
Residential Development Land



4700 45TH STREET
Stony Plain, AB

Victor Moroz, Associate Broker
780.499.6400 | victor@royalpage.ca

Royal LePage Noralta Real Estate Inc, Brokerage
202 Main Street, Spruce Grove, AB
Independently Owned & Operated

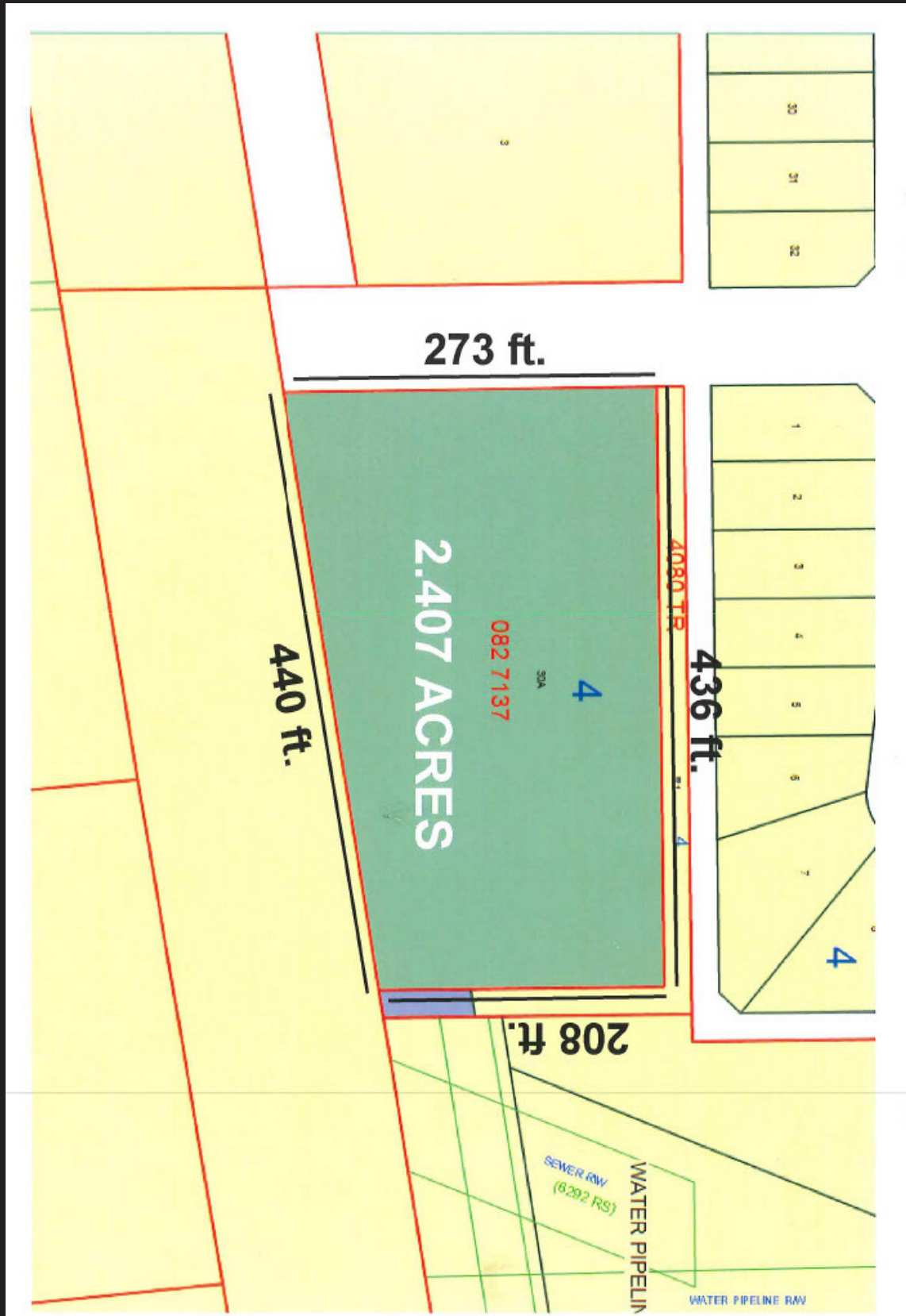
PROPERTY OVERVIEW

\$698,000.00

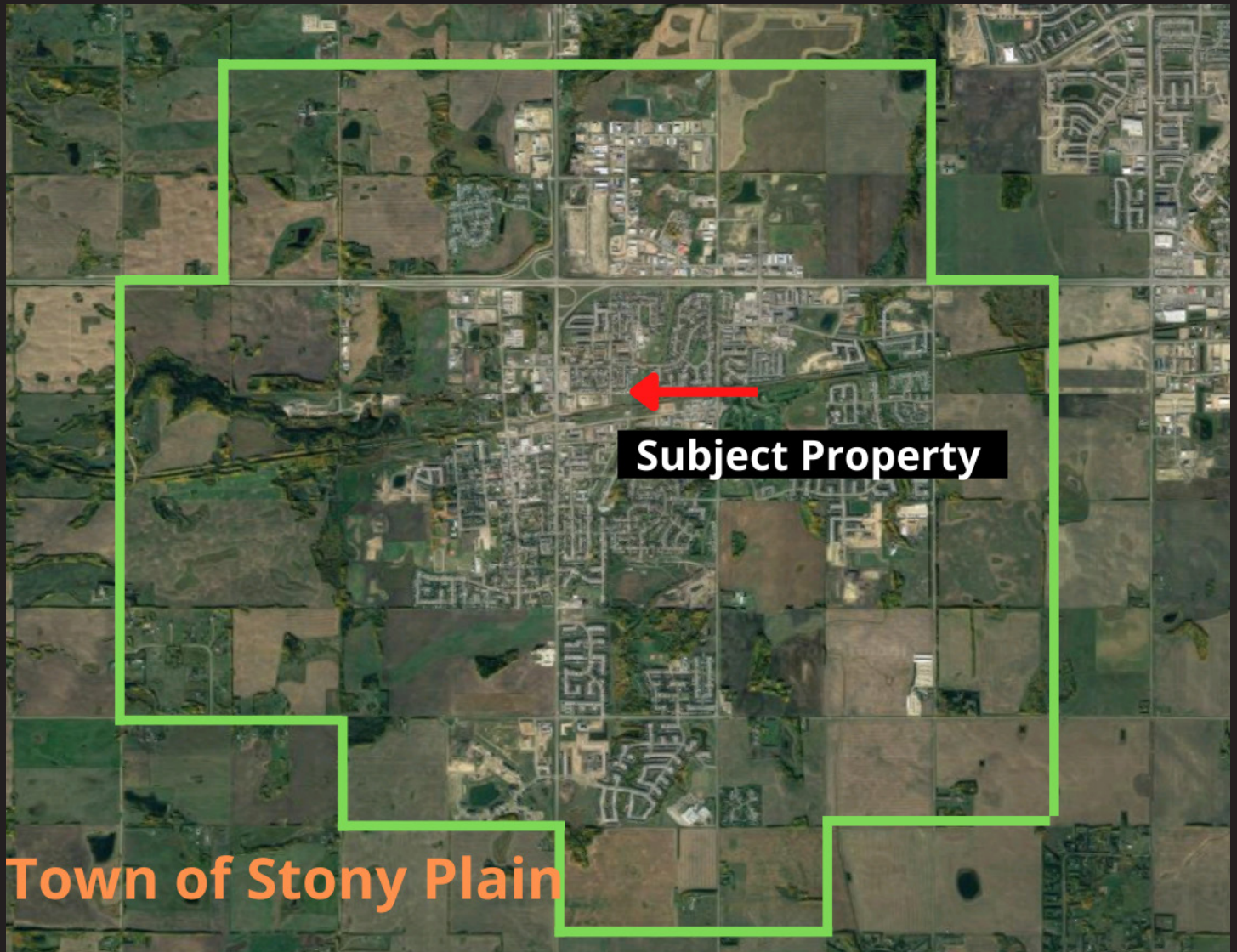
Property Features

- Residential Land - Ready For Development
- Excellent Location!
- Walking Distance To All Amenities
- Walk To Stony Plain's Revitalized Downtown
- Possibility Of Building High-Density Residential Buildings
- Close Proximity To Highways 16a & 779
- Surrounded By Single Family Homes And Next To Green Space
- Zoned R6
- Residential Comprehensively Planned District

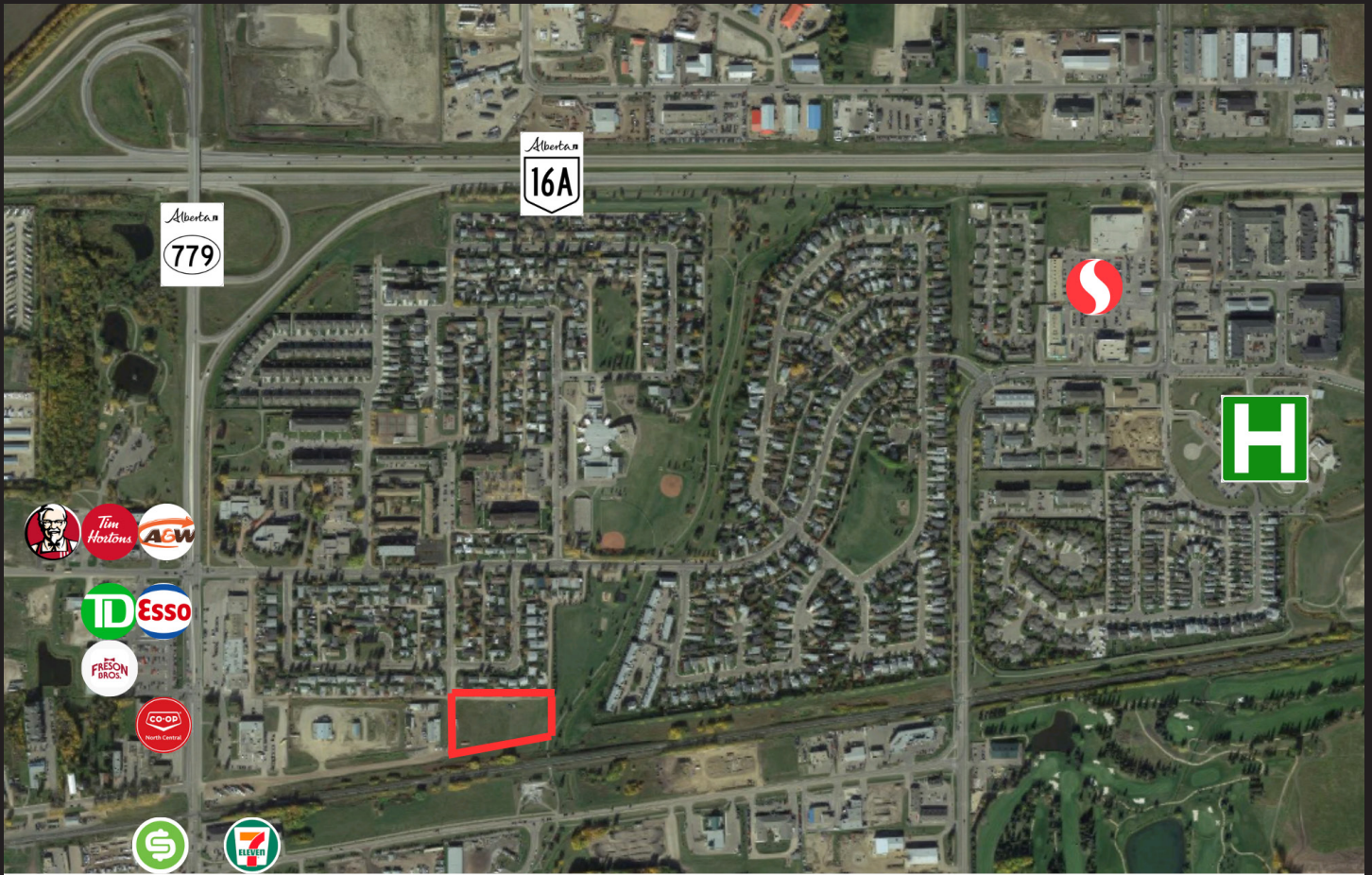
LOT BOUNDARIES



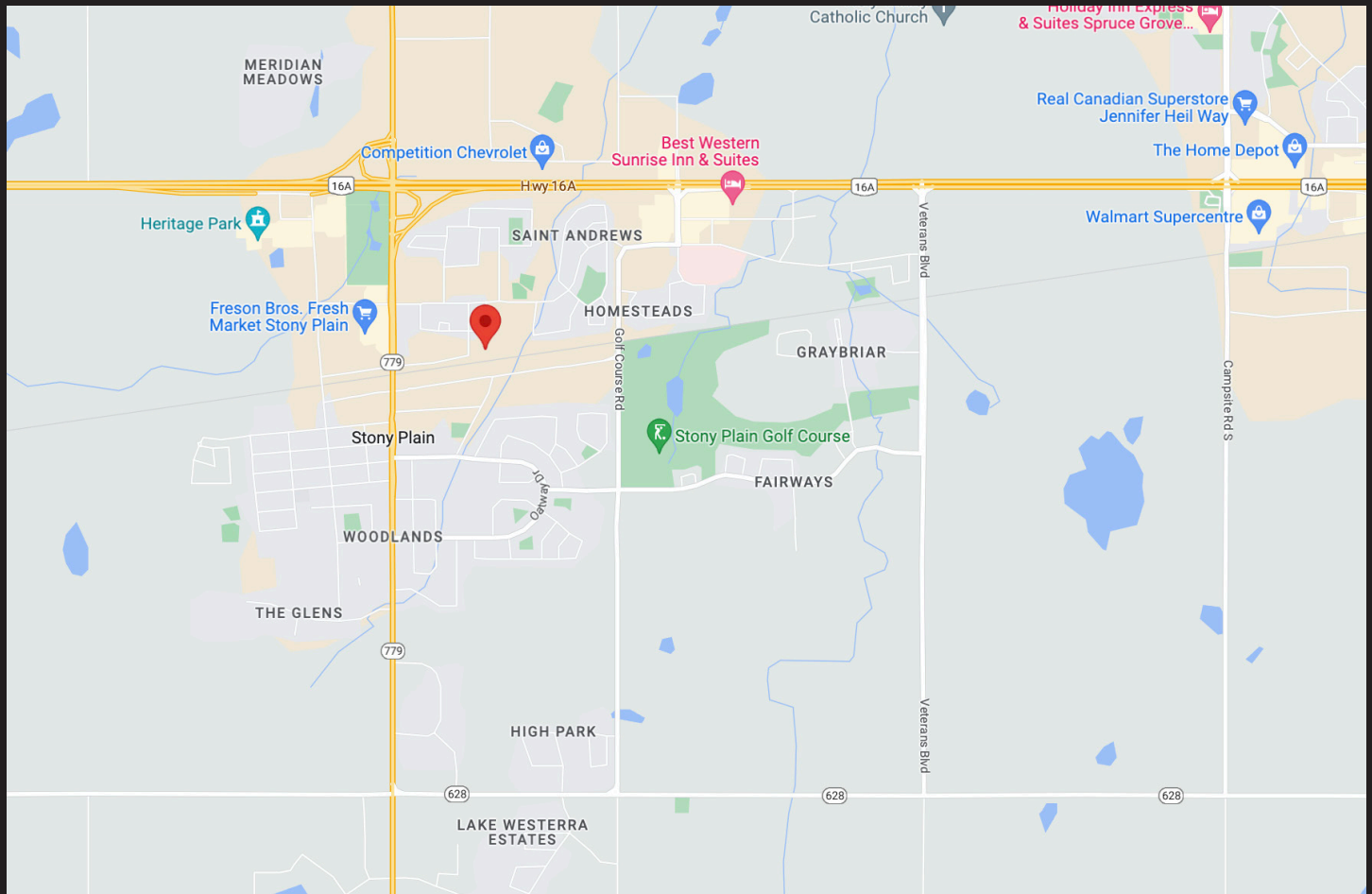
LOCATION MAP



AERIAL MAP



LOCATION MAP



All offices are independently owned and operated, except those marked as indicated at rlp.ca/disclaimer. Not intended to solicit currently listed properties or buyers under contract. The above information is from sources believed reliable, however, no responsibility is assumed for the accuracy of this information. ©2022 Bridgemarq Real Estate Services Manager Limited. All rights reserved.