



Industrial warehouse space

- New 3 building multi-tenant industrial complex
- One 4,849 SF bay remaining
- Total building size 48,415 SF
- Located in the heart of MacKenzie Industrial Park
- Yard available with ample marshalling area
- Available immediately
- Market lease rate
- Bays improved to tenant specification

Get more information

Ken Williamson, MBA

Principal
780.880.0663
ken.williamson@avisonyoung.com

Carl Pedersen, B. Comm.

Principal
780.880.9045
carl.pedersen@avisonyoung.com

Jason Williamson

Associate
780.993.3535
jason.williamson@avisonyoung.com

Marjorie Elliott, Bsc, LLB

Associate
778.895.0778
marjorie.elliott@avisonyoung.com

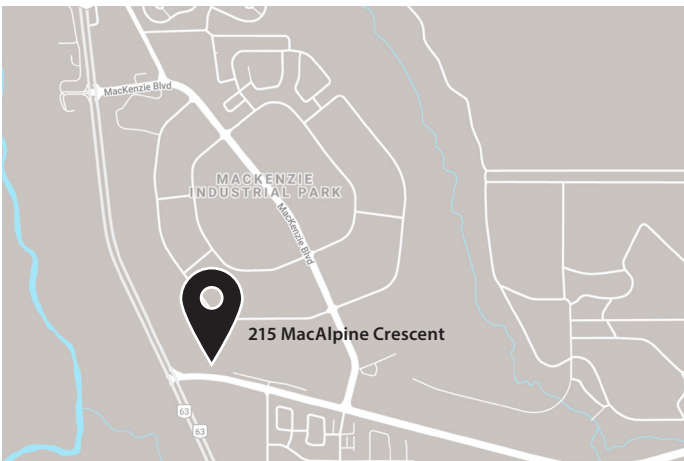
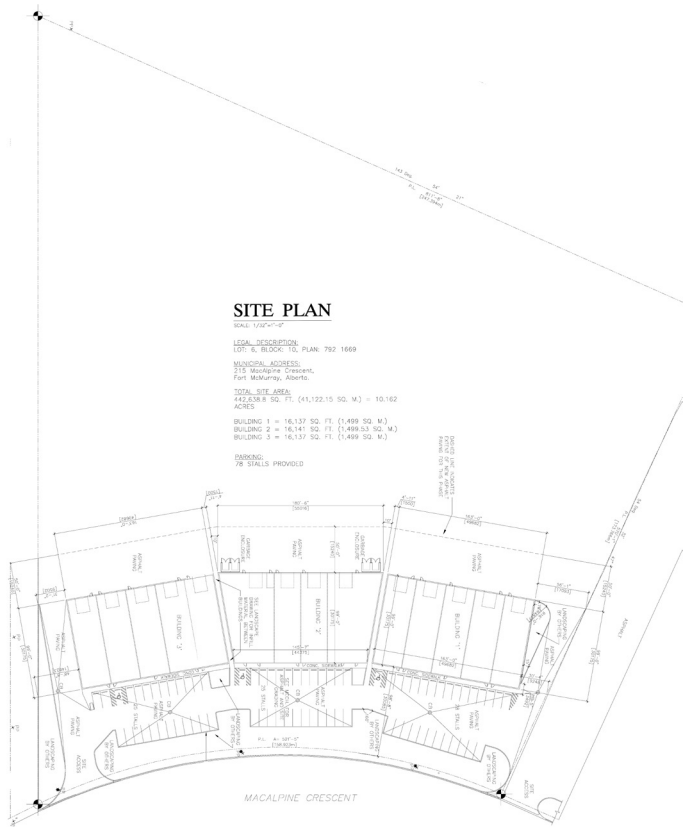
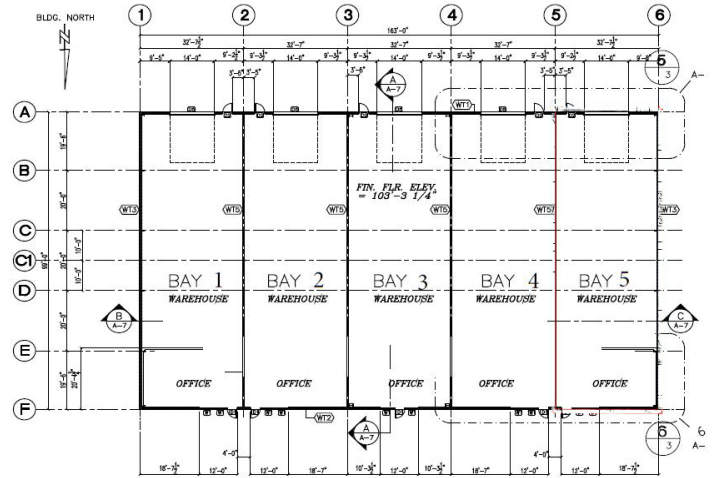
avisonyoung.com

For Lease

215 MacAlpine Crescent, Fort McMurray, AB

Property Details

Available:	Immediately
Area:	4,849 SF
Yard Area:	Developed to tenant spec
Zoning:	BI - Business Industrial
Legal:	Plan 7921669, Block 10, Lot
Access:	TaigaNova Eco-Industrial Park
Asking Rate:	Market
Operating Costs:	TBC
Lease Term:	From three years and up
Signage:	On building
Year Built:	2016
Construction Type:	Pre-engineered steel
Loading:	Grade doors - 14' x 16'
Cranes:	No
Lighting:	T5
Ceiling Height:	22'
Fire Suppression:	No
Heating/HVAC:	Radiant tube



Ken Williamson, MBA
Principal
780.880.0663
ken.williamson@avisonyoung.com

Carl Pedersen, B. Comm.
Principal
780.880.9045
carl.pedersen@avisonyoung.com

