

# FOR SALE

3124 S. Pennsylvania Ave  
Oklahoma City, OK 73119



**Johnson**  
Commercial Group

JohnsonCommercialGroup.com



## Offering Summary

**Sale Price: \$659,000**

**Size: 5,525 SF**

**Price Per SF: \$135.18**

**Year Built: 1981**

**Zoning: 0-2**

## Property Overview

Discover a great opportunity at 3124 S Pennsylvania Ave, the former Dreamland Child Center. This 5,525 square-foot facility, built in 1981, is fully set up for a daycare operation and was licensed for 91 children. The HVAC, lighting, flooring, and paint have all been recently replaced, ensuring a fresh, updated space ready for immediate use. With a functional layout designed for childcare, it's an ideal space for those looking to open or expand a daycare center. Located in a prime area, this building offers a fantastic turn-key business venture.

**Chris Johnson**  
chris@jcgok.com  
405.435.3572



**BRICK & BEAM**  
REALTY



# FOR SALE

3124 S. Pennsylvania Ave  
Oklahoma City, OK 73119



**Johnson**  
Commercial Group

JohnsonCommercialGroup.com



**Chris Johnson**  
chris@jcgok.com  
405.435.3572



**BRICK & BEAM**  
REALTY



# FOR SALE

3124 S. Pennsylvania Ave  
Oklahoma City, OK 73119



**Johnson**  
Commercial Group

JohnsonCommercialGroup.com



**Chris Johnson**  
chris@jcgok.com  
405.435.3572



**BRICK & BEAM**  
REALTY



# FOR SALE

3124 S. Pennsylvania Ave  
Oklahoma City, OK 73119



**Johnson**  
Commercial Group

JohnsonCommercialGroup.com



**Chris Johnson**  
chris@jcgok.com  
405.435.3572



**BRICK & BEAM**  
REALTY



# FOR SALE

3124 S. Pennsylvania Ave  
Oklahoma City, OK 73119



**Johnson**  
Commercial Group

JohnsonCommercialGroup.com



**Chris Johnson**  
chris@jcgok.com  
405.435.3572



**BRICK & BEAM**  
REALTY



# FOR SALE

3124 S. Pennsylvania Ave  
Oklahoma City, OK 73119



## Johnson Commercial Group

JohnsonCommercialGroup.com



**Chris Johnson**  
chris@jcgok.com  
405.435.3572



**BRICK & BEAM**  
REALTY

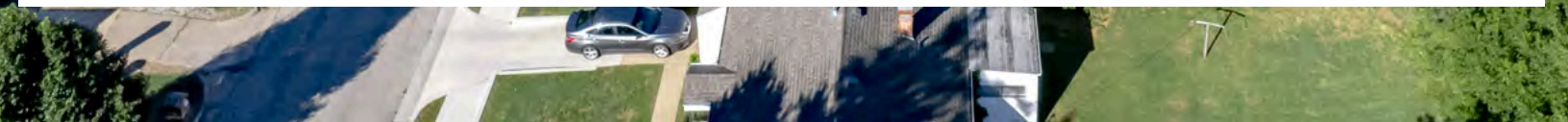
# FOR SALE

3124 S. Pennsylvania Ave  
Oklahoma City, OK 73119



# Johnson Commercial Group

JohnsonCommercialGroup.com



**Chris Johnson**  
chris@jcgok.com  
405.435.3572



**BRICK & BEAM**  
REALTY



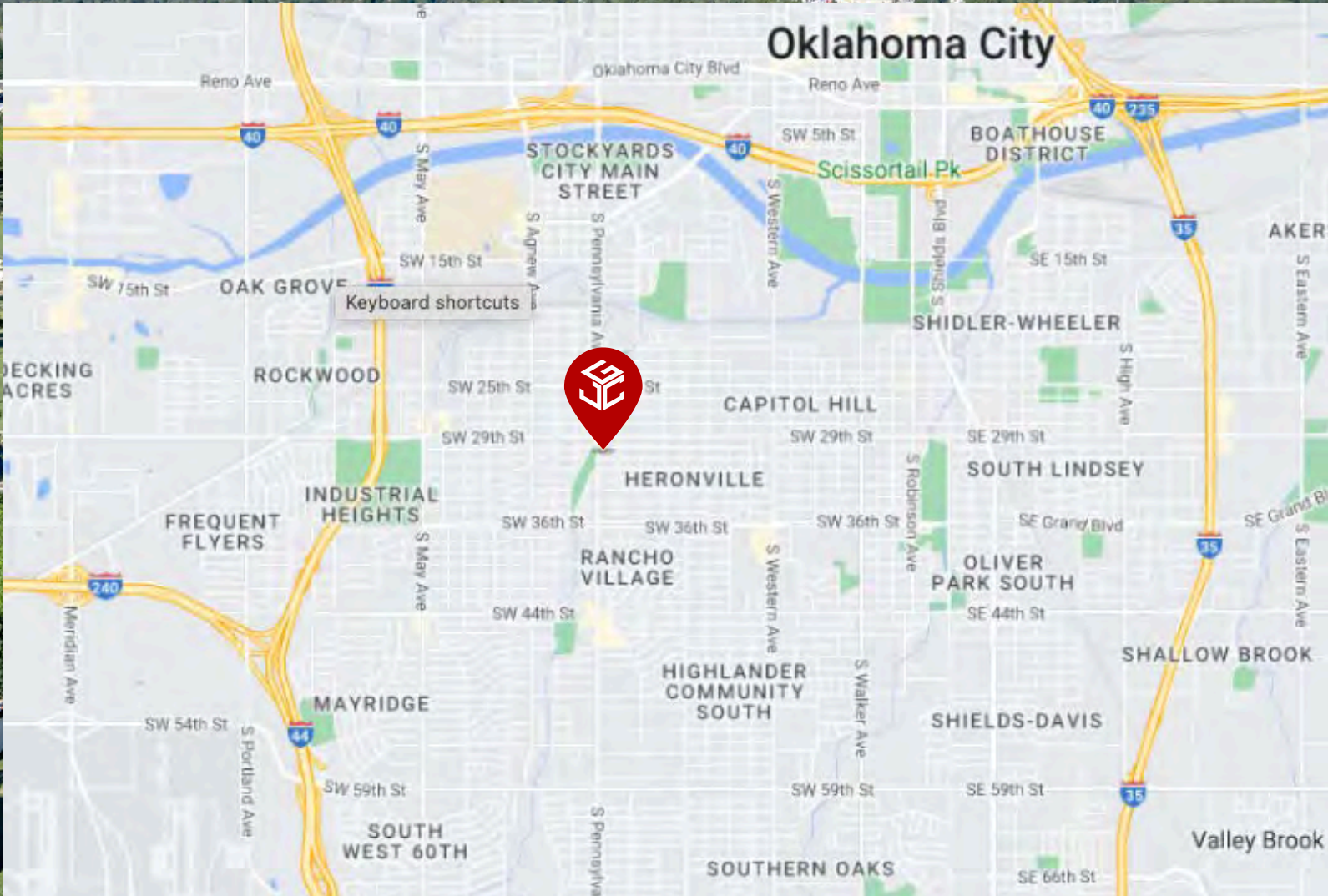
# FOR SALE

3124 S. Pennsylvania Ave  
Oklahoma City, OK 73119



**Johnson**  
Commercial Group

JohnsonCommercialGroup.com



**Chris Johnson**  
chris@jcgok.com  
405.435.3572



**BRICK & BEAM**  
REALTY



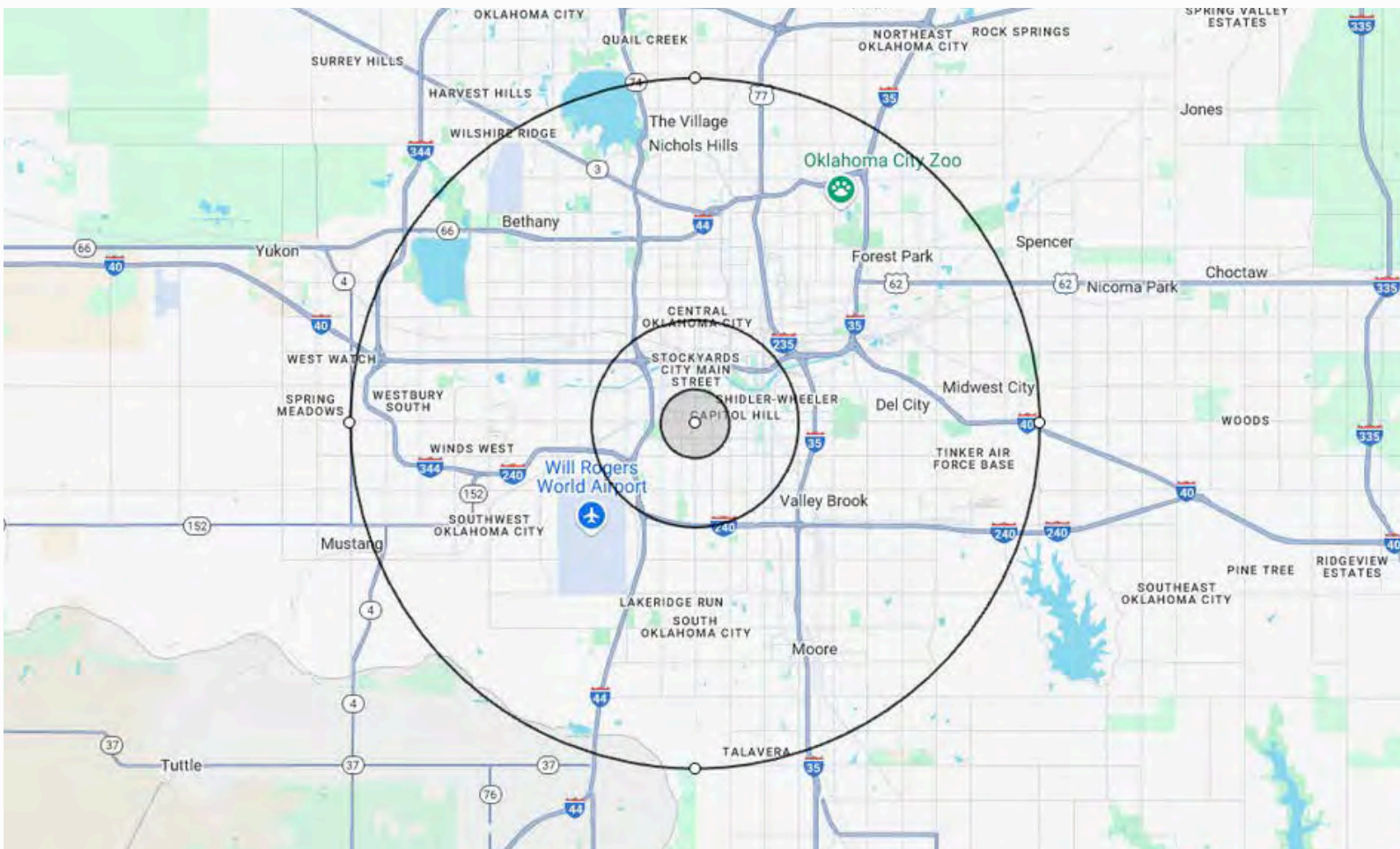
# FOR SALE

3124 S. Pennsylvania Ave  
Oklahoma City, OK 73119



**Johnson**  
Commercial Group

JohnsonCommercialGroup.com



## Demographics

### 1 MILE

### 3 MILE

### 10 MILE

	1 MILE	3 MILE	10 MILE
Population	20,313	100,841	613,732
Average Age	31	32	35
Employment	2,218	51,583	404,916
Households	6,651	34,853	243,070
Ave. Household Income	\$49,398	\$50,245	\$69,934
Median Household Value	\$42,127	\$39,759	\$53,299

## Traffic Count

Average Daily Volume

13,505 Vehicles

**Chris Johnson**  
chris@jcgok.com  
405.435.3572



**BRICK & BEAM**  
REALTY



# FOR SALE

3124 S. Pennsylvania Ave  
Oklahoma City, OK 73119



**Johnson**  
Commercial Group

JohnsonCommercialGroup.com



## Disclaimer

A real estate broker is not authorized to give legal or tax advice. No representation is made by Johnson Commercial Group, its agents or employees, as to the legal effect or tax consequences of the information contained herein or any transaction relating thereto. Although all information furnished regarding property sales or financing options are from sources deemed to be reliable, such information has not been verified and no express representation is made on, or is in any way implied as to the accuracy thereof and is subject to errors, omissions, change of price, or other conditions prior to sale or withdrawal without notice.

**Chris Johnson**  
chris@jcgok.com  
405.435.3572



**BRICK & BEAM**  
REALTY