



OFFICE SPACE AVAILABLE FOR SALE

GREENFIELD PROFESSIONAL PLAZA

1635 N. Greenfield Road | Mesa, AZ 85205

SALE PRICE: \$990,000

CURRENT SPACE AVAILABLE:

Suite 103: 3,050 sf



LOBBY



FRONT DESK



TREATMENT AREA

For more information please contact:

Jeremy Johnson

Senior Property Manager

602.252.9300 | jj@casehuff.com

PROFESSIONALLY LEASED & MANAGED BY

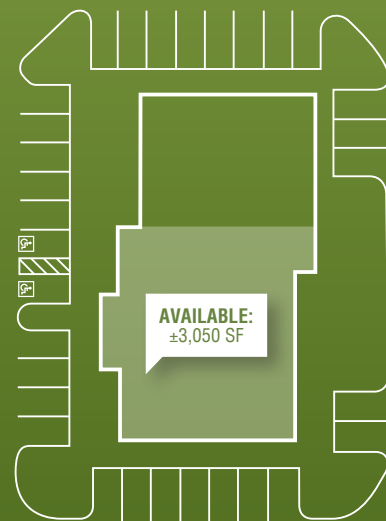
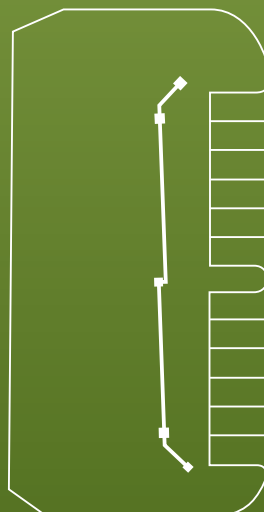


**CASE
HUFF**
& ASSOCIATES

www.casehuff.com

Site Plan

N Greenfield Road



GREENFIELD PROFESSIONAL PLAZA

SUITE 103 PHOTOS



PROFESSIONALLY LEASED & MANAGED BY



**CASE
HUFF
& ASSOCIATES**

www.casehuff.com

DISCLAIMER: No warranty or representation, express or implied, is made to the accuracy of the information contained herein and same is submitted subject to errors, omissions, change of price, rental or other conditions, withdrawal without notice and to any special listing conditions imposed by our principals.

GREENFIELD PROFESSIONAL PLAZA

SUITE 103 / EXTERIOR PHOTOS



PROFESSIONALLY LEASED & MANAGED BY

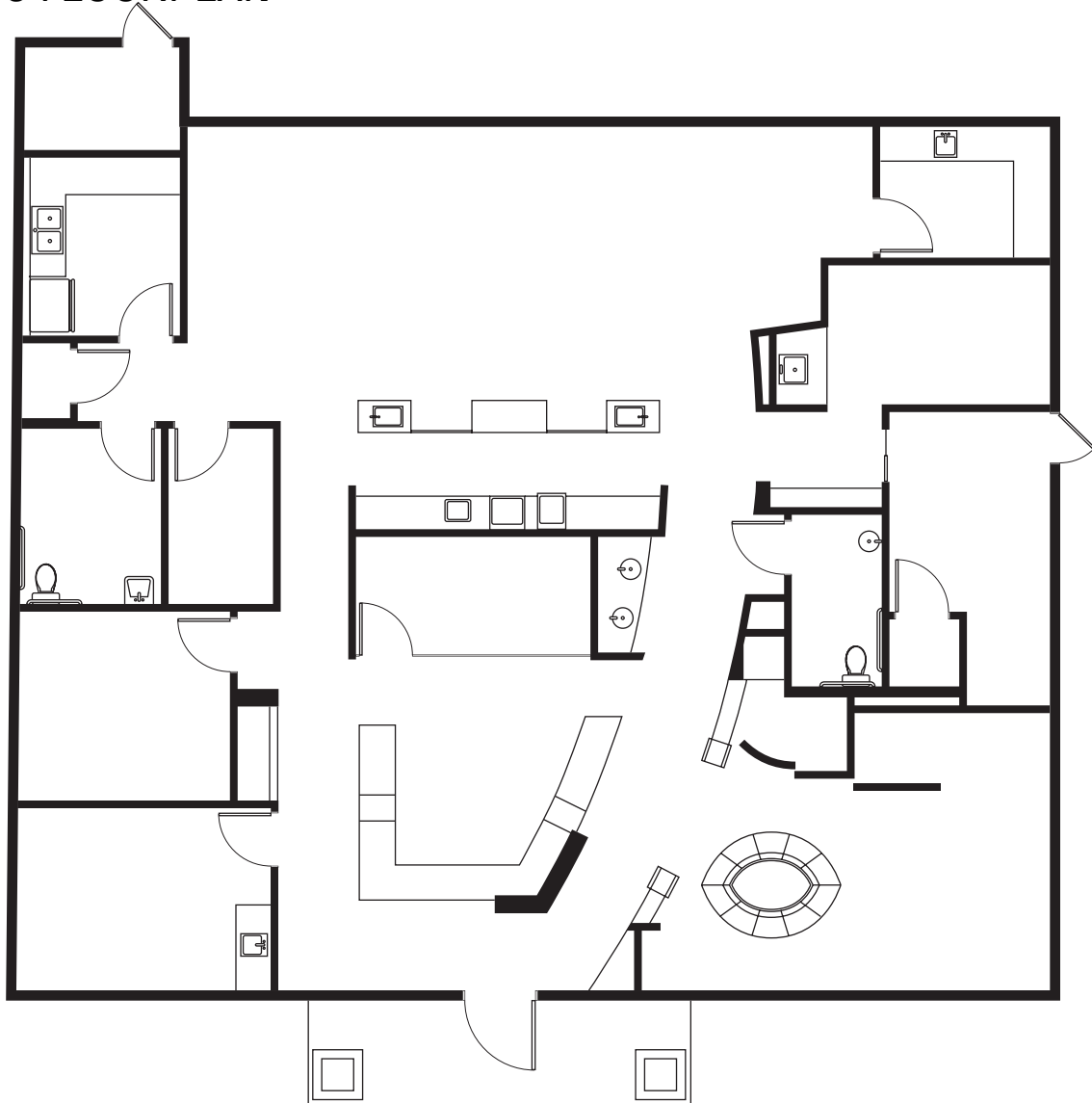


www.casehuff.com

DISCLAIMER: No warranty or representation, express or implied, is made to the accuracy of the information contained herein and same is submitted subject to errors, omissions, change of price, rental or other conditions, withdrawal without notice and to any special listing conditions imposed by our principals.

GREENFIELD PROFESSIONAL PLAZA

SUITE 103 FLOORPLAN



Sale Price: \$990,000

Current Space Available:

Suite 103: 3,050 sf

Location

Just a half mile south of Falcon Field Airport, two miles south of the Loop 202. Suite 103 has visibility on Greenfield Road.

For more information please contact:

Jeremy Johnson

Senior Property Manager

602.252.9300 | jj@casehuff.com

PROFESSIONALLY LEASED & MANAGED BY



www.casehuff.com

DISCLAIMER: No warranty or representation, express or implied, is made to the accuracy of the information contained herein and same is submitted subject to errors, omissions, change of price, rental or other conditions, withdrawal without notice and to any special listing conditions imposed by our principals.