

WALNUT SHOPPING CENTER

PRICE:

\$11NN PER SQFT

601-729 Walnut St. Rocky Mount, NC 27803

MKM COMMERCIAL REALTY
Real Estate Brokerage Service

Arpan Makam

☎ (919) 889 - 4747 / (919) 907 - 0760

✉ arpan@mkmcommercial.com

🌐 www.mkmcommercial.com

Phillip Rabil

☎ (252) 382-8117

✉ prabil@mkmcommercial.com

📍 214 W. Millbrook RD, Raleigh NC



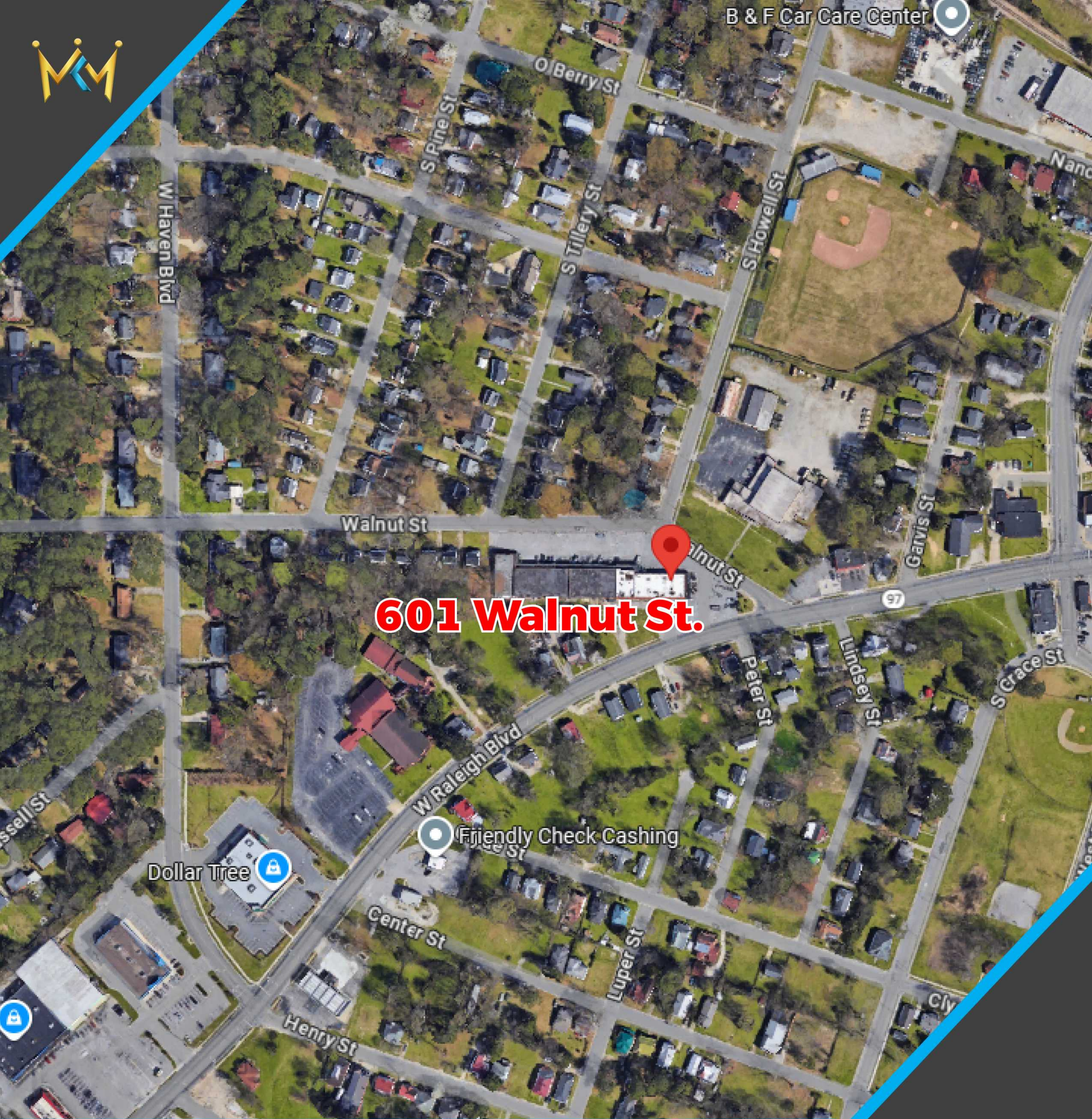
Property Type:	Retail
Property Sub-type:	Storefront Retail/Residential
Building Class:	C
Sales Type:	Investment or Owner User
Lot Size:	1.54 AC
Gross Leasable Area:	22,910 SF
Tenancy:	Multiple
Parking Ratio:	3.75/1,000 SF
Zoning Description:	B2
APN / Parcel ID:	3759-10-27-9405

GENERAL INFORMATION

Located in Rocky Mount NC, this historic shopping center is ready to be sold to a new owner. The building was built in 1954 and obtained a new roof last year along with a few renovated units. The Property has a lot of neighboring residential properties on the side and commercial on the other. The neighboring commercial property includes national chains such as Dollar Tree, Hardee's, Piggy Wiggly. Don't miss an opportunity to buy a property that is located in a city which is between New York and Florida (Right of I-95), bringing in multiple companies (Ex-CSX), and has opened a new event center + brewery mill.



B & F Car Care Center



601 Walnut St.

Friendly Check Cashing

Dollar Tree

LOCATION

601-729 Walnut St. Rocky Mount, NC 27803



Scan Using QR code scanner app on your
smartphone and directly view the map
on your device



Army National
Guard Armory

W Raleigh Blvd

Walnut Nails

Walnut St

Walnut St

S Howell St

S Tillery St

S Howell St

**AERIAL
VIEW**

601-729 Walnut St. Rocky Mount, NC 27803



WALNUT SHOPPING CENTER

PRICE:

\$11NN PER SQFT

601-729 Walnut St. Rocky Mount, NC 27803

Arpan Makam

☎ (919) 889 - 4747 / (919) 907 - 0760

✉ arpan@mkmcommercial.com

🌐 www.mkmcommercial.com

Phillip Rabil

☎ (252) 382-8117

✉ prabil@mkmcommercial.com

📍 214 W. Millbrook RD, Raleigh NC