



CASTLE ROCK FLEX PERSONAL WAREHOUSE

Castle Rock, CO

UNIT FEATURES BOOKLET



STANDARD FEATURES

DOOR, PAINT, FLOORING



- 1 **14'x14' OH Insulated Door & Operator with 1 Remote**
Door & Operator Brand: Liftmaster
Door: CHI - black solid door | TM220 with ThermaSeal technology
20 gauge exterior, 18.3 R-value
Warranty: Door rust & Insulation Delamination - 10 years
Windows, Hardware, & Springs - 1 year
Operator: LiftMaster with ControlHoist Standard Operator | Side-Mounted
Warranty: 3 years with purchase of door
 - 2 **Dedicated Man Door**
With Schlage Cypher keypad entry lock
 - 3 **All Interior Walls Painted And Finished**
Peppercorn on Blocks
Repose Gray on Drywall
 - 4 **Polished Concrete Floor**
- **Wet Bar Roughed In**
 - **Insulated, finished, sheetrock demising walls**
 - **LED Lights throughout space**
 - **150 amps | 3-phase power**
 - **Internet Roughed In**

*Due to supply chain and manufacturing delays, substitutions may occur

STANDARD FEATURES — ROOF & HVAC



1

1 Insulated Roof & HVAC Ducting



2

2 HVAC Unit

5-ton high efficiency system
Brand: Carrier 5-ton 14 Seer

*Due to supply chain and manufacturing delays, substitutions may occur

STANDARD FEATURES — MEZZANINE



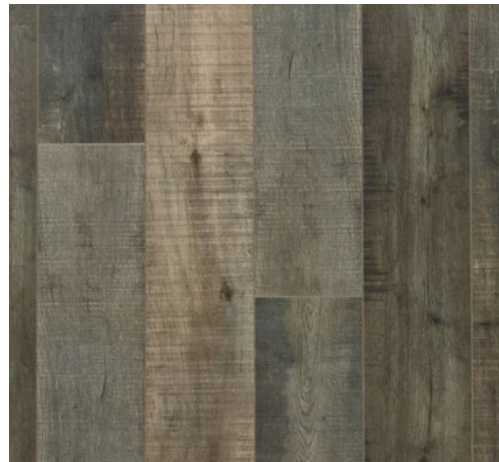
1

- 1 **Mezzanine**
Chrome mezzanine & stairs

- 2 **Mezzanine Flooring**
LVT flooring: Bellevue Moon Waterproof Laminate



1



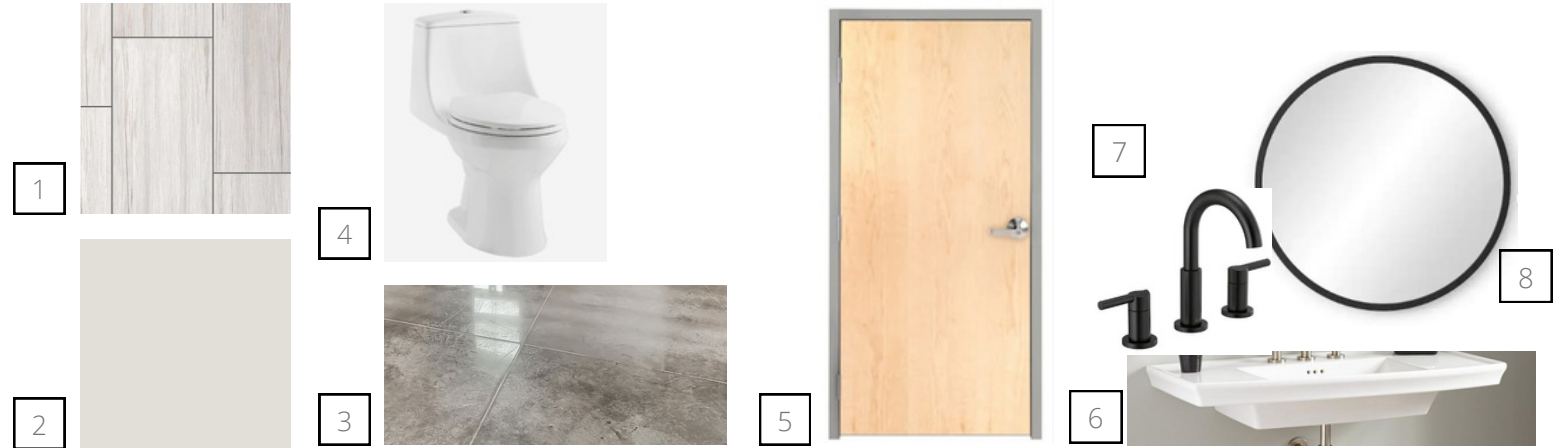
2

*Due to supply chain and manufacturing delays, substitutions may occur

STANDARD FEATURES — RESTROOM

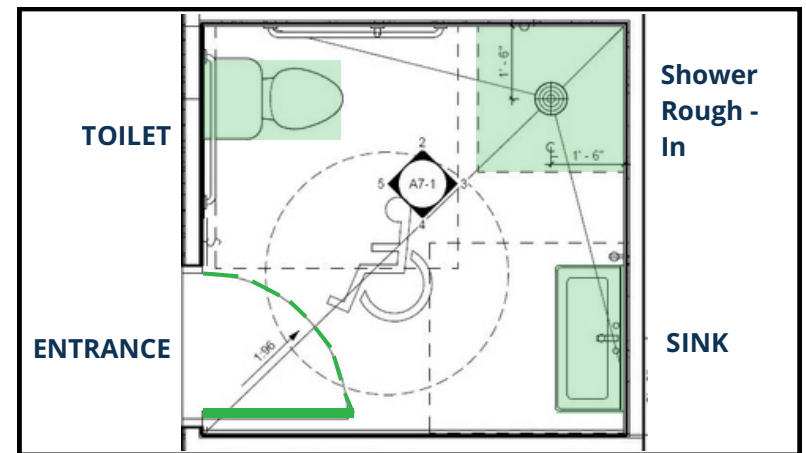
FINISHES

- Polished Concrete Floor
- Tile Wet Walls
- Upgraded Fixtures



- 1 WALL TILE**
 - Sahara Sand 12" x 24"
 - 3 walls to 48"
 - Vertical brick lay
 - Gray grout
- 2 BATHROOM PAINT**
 - Sherwin Williams - Eiden White
- 3 Polished Concrete Floor**
- 4 Toilet**
 - Project Source Laporte Dual Flush White Elongated Chair Height Toilet

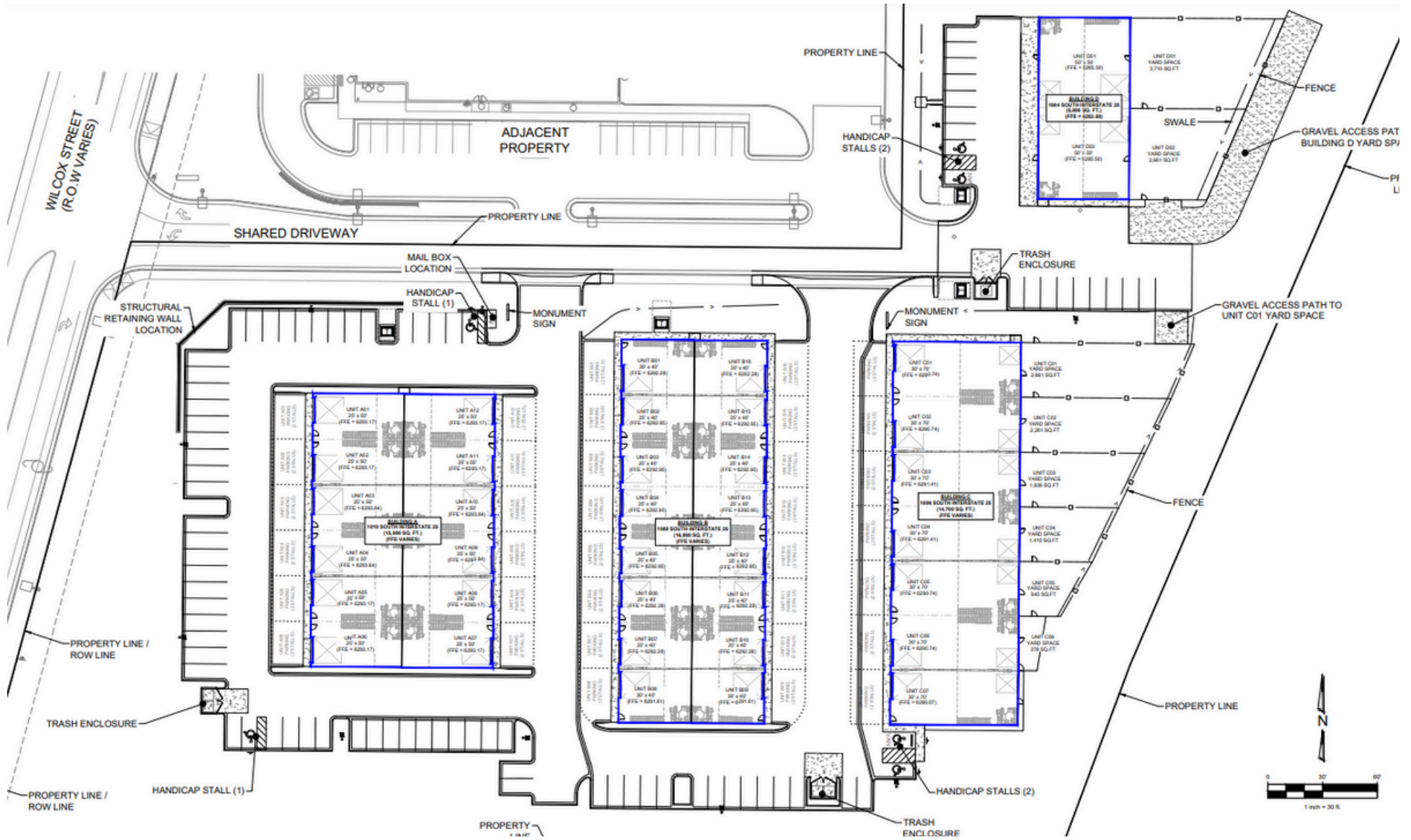
- 5 DOOR**
 - 3070 Solid Core Maple Door
- 6 Wall Mounted Sink**
 - Signature Hardware Olney 39" Porcelain Sink
- 7 Sink Faucet**
 - Delta Nicoli black 3-hole faucet
- 8 Wall Mirror**
 - Umbra Hub 37" Round



FLOOR PLAN

*Due to supply chain and manufacturing delays, substitutions may occur

PERSONAL WAREHOUSE



*Due to supply chain and manufacturing delays, substitutions may occur