

Office For Lease

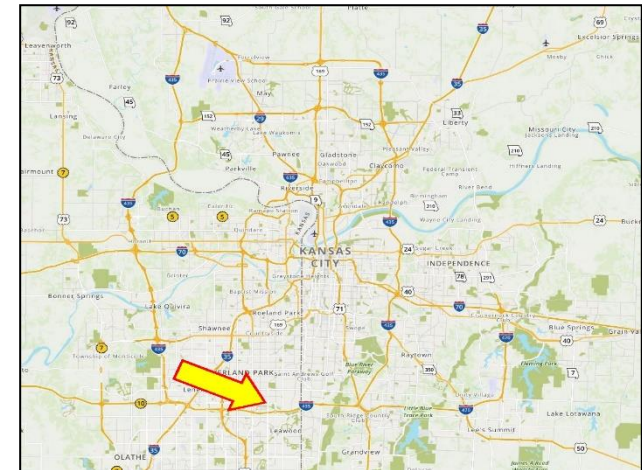
BYRAM
REAL ESTATE

5350 W. 94th Terrace, Prairie Village, KS 66207



OVERVIEW

- 655 & 1,025 Sq. Ft. Spaces Available
- Covered Parking Available
- On-Site Management
- Good Parking Ratio
- Walk to many Restaurants and Shops



All Information furnished regarding property for sale or lease is from sources believed to be reliable, but we cannot guarantee the accuracy thereof, and same is submitted subject to errors, omissions, change of price, or other conditions, or withdrawal without notice.

CONTACT:
John Byram
(913) 722-5229

BYRAM REAL ESTATE
5350 W. 94th Terr., Suite 201, Prairie Village, KS 66207
Phone (913) 722-5229 / Fax (913) 722-0909
Email ~ John@ByramRE.com / www.ByramRE.com

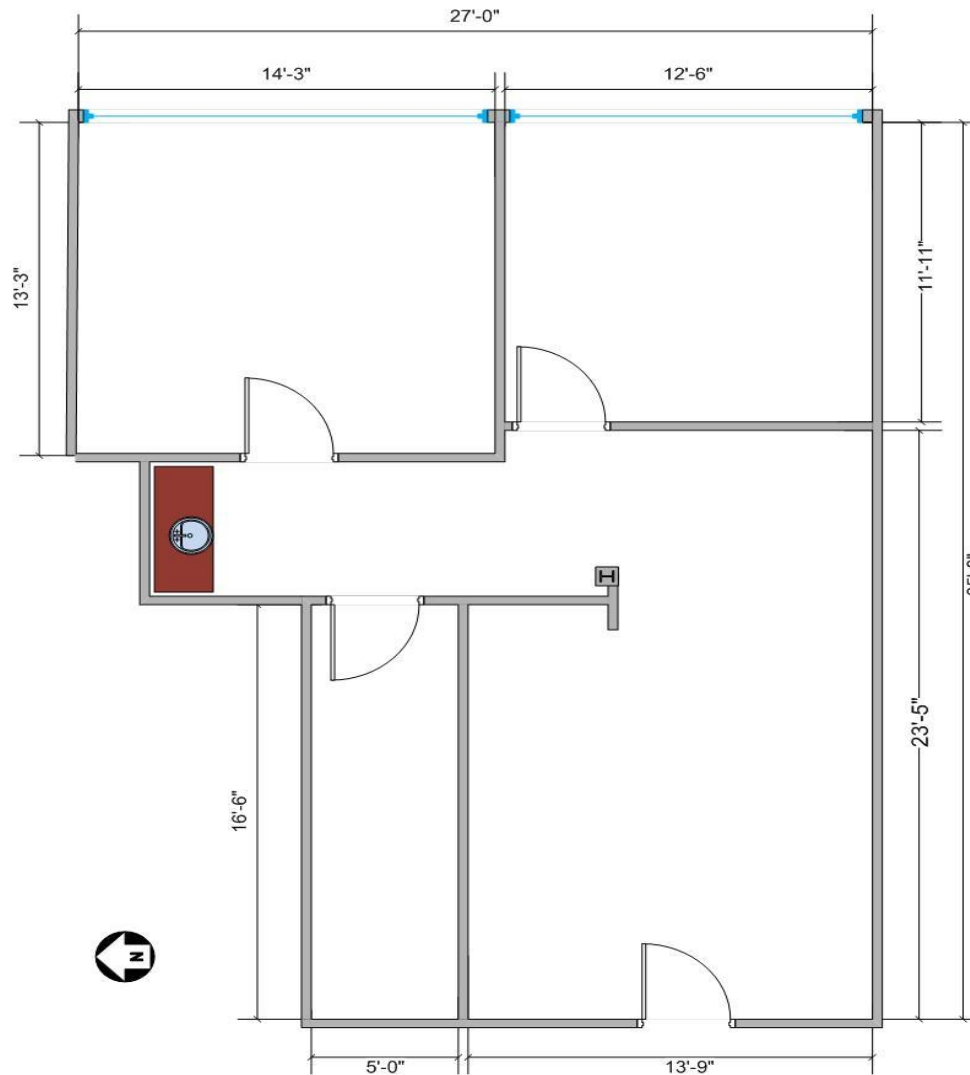


MEADOWBROOK
PARK

95TH STREET

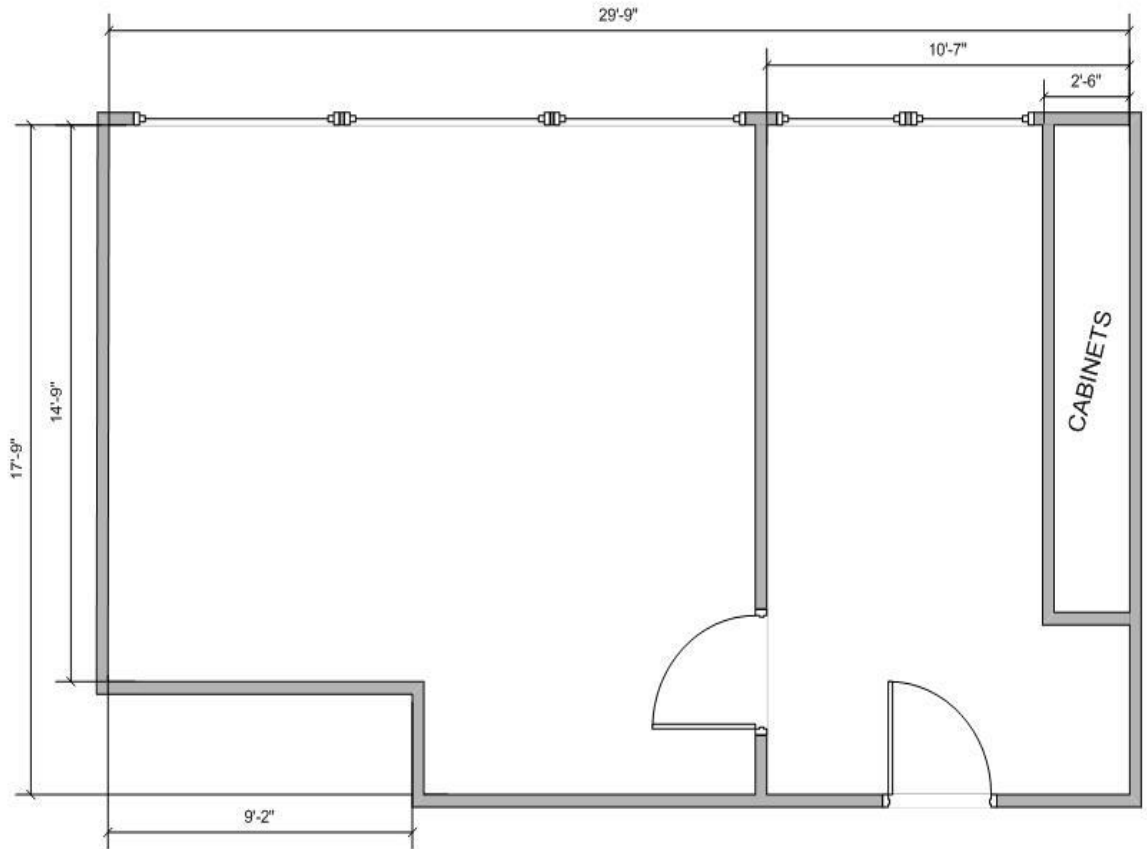
NALL AVENUE





5350 W. 94th Terrace, Prairie Village, KS 66207
Suite 102
1,025 +/- SF

ALL MEASUREMENTS ARE APPROXIMATE
NOT TO SCALE



5350 W. 94th Terrace, Prairie Village, KS
Suite 200
+/- 655 Sq.Ft.
All Measurements Are Approximate
Not To Scale