

3 Lopez Road

Wilmington, Massachusetts



Kevin Olson

kolson@nordlundassociates.com

(978)-762-0500

Brenden McCarthy

bmccarthy@nordlundassociates.com

(857) 266-6510

www.NordlundAssociates.com



NORDLUND
ASSOCIATES



Available For Sublease

3 Lopez Road

Wilmington, Massachusetts

Nordlund Associates Inc. is pleased to present 3 Lopez Road Wilmington a 53,500 SF Flex building with up to 20,000 SF available for sublease. 3 Lopez recently underwent significant redevelopment, the building has a new roof, facade, windows and is in "white box" condition. Property consists of 14' clear to the joist and 16' to deck, 5 Loading docks, 2 drive in doors, 3,000 amp 480-volt service. Flexible terms, willing to sign long term and provide improvements to space, subject to businesses' desired specifications.

Kevin Olson

kolson@nordlundassociates.com
(978)-762-0500

Brenden McCarthy

bmccarthy@nordlundassociates.com
(857) 266-6510

www.NordlundAssociates.com



**NORDLUND
ASSOCIATES**

Property Summary

Location Description

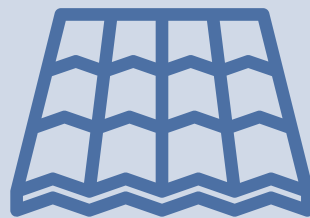
3 Lopez Road is conveniently located just off of I-93 in Wilmington exit 33 Concord Road. Close by to downtown Wilmington, as well as several restaurants and retail establishments, just five minutes to I-95 and 18 minutes to Boston. Great opportunity for business targeting easy highway access and located within Corporate neighbors such as Takeda, Teradyne, FedEx & Lennox Industries.



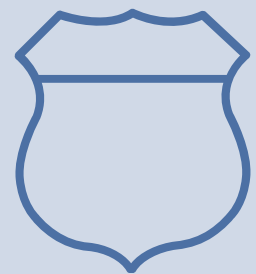
Property Highlights



**480V
3,000 AMPS**



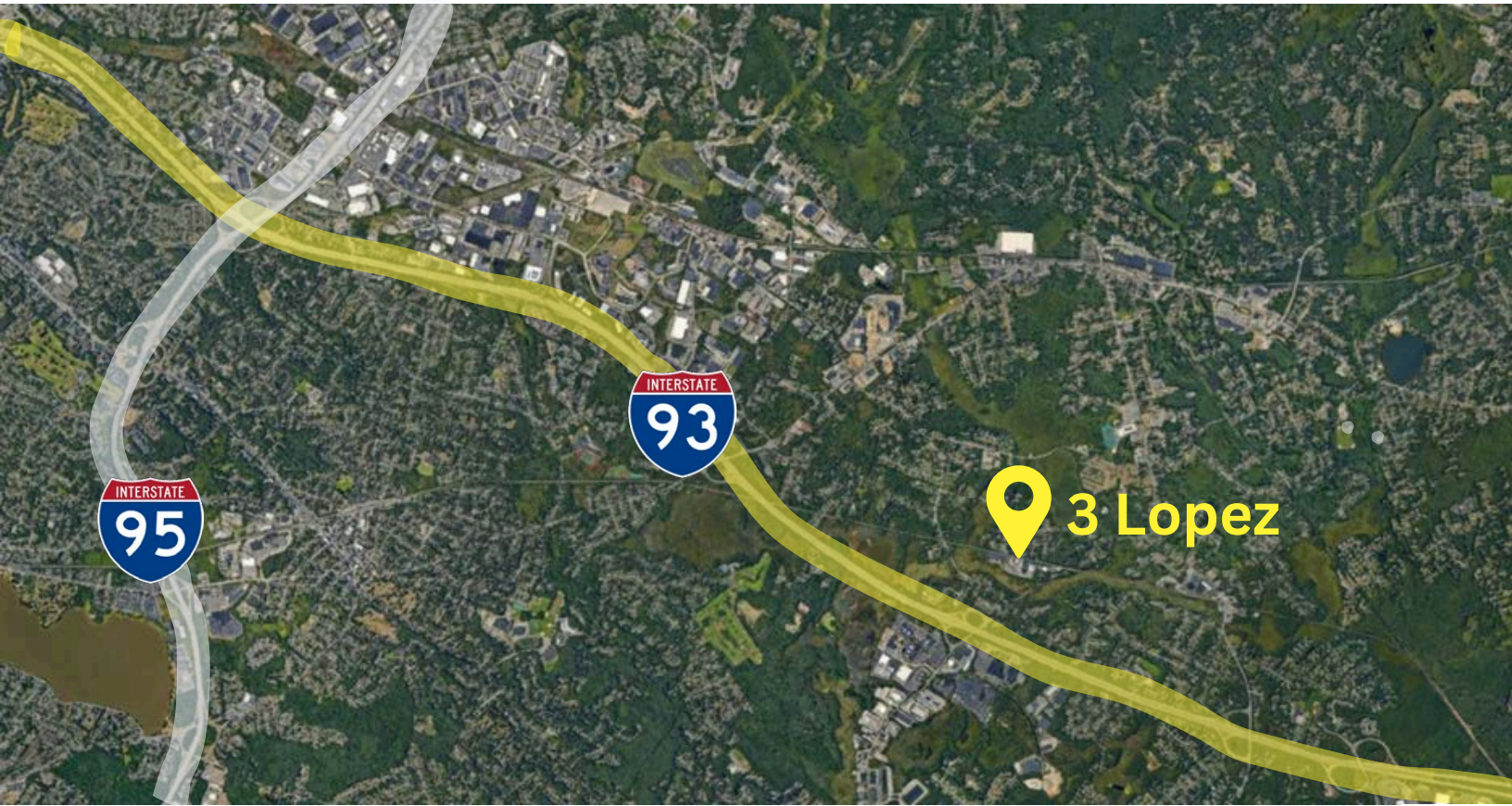
**Brand New
Roof & Facade**



**Direct Access
off I-93**

3 Lopez Road





Distances

To I-93: **1 Minutes / .5 Mile**



To I-95: **7 Minutes / 4 Miles**



KEVIN OLSON

KOLSON@NORDLUNDASSOCIATES.COM

(978)-762-0500



BRENDEN MCCARTHY

BMCCARTHY@NORDLUNDASSOCIATES.COM

(857)-266-6510



NORDLUND
ASSOCIATES

CONFIDENTIALITY & DISCLAIMER

The information above has been obtained from sources believed reliable. While we do not doubt its accuracy, we have not verified it and make no guarantee, warranty or representation about it. It is the responsibility of all parties interested to independently confirm its accuracy and completeness. All parties may solicit their own advisor (s) to conduct a careful, independent investigation of the property to determine to your satisfaction the suitability of the property for your needs.