

FOR LEASE

PROFESSIONAL OFFICE SPACE | ±5,090 SF - ±18,307 SF



Lease Details

- Lease Rate: \$1.75/SF/NNN
- Lease Type: NNN (\$0.60/SF)

Property Details

- 1st Floor Space: 13,217 SF
- 2nd Floor Space: 5,090 SF
- Parking: Private Lot and Street
- Restrooms: Common
- Elevator Served: Yes
- HVAC: Yes
- Zoning: PD/M-1 (Light Manufacturing)
- Load Factor: +/-1.15%

2811 Airpark Drive | Santa Maria, CA

Chris Garner
805.928.2800 ext. 104
CGarner@PacificaCRE.com
Lic #01010310

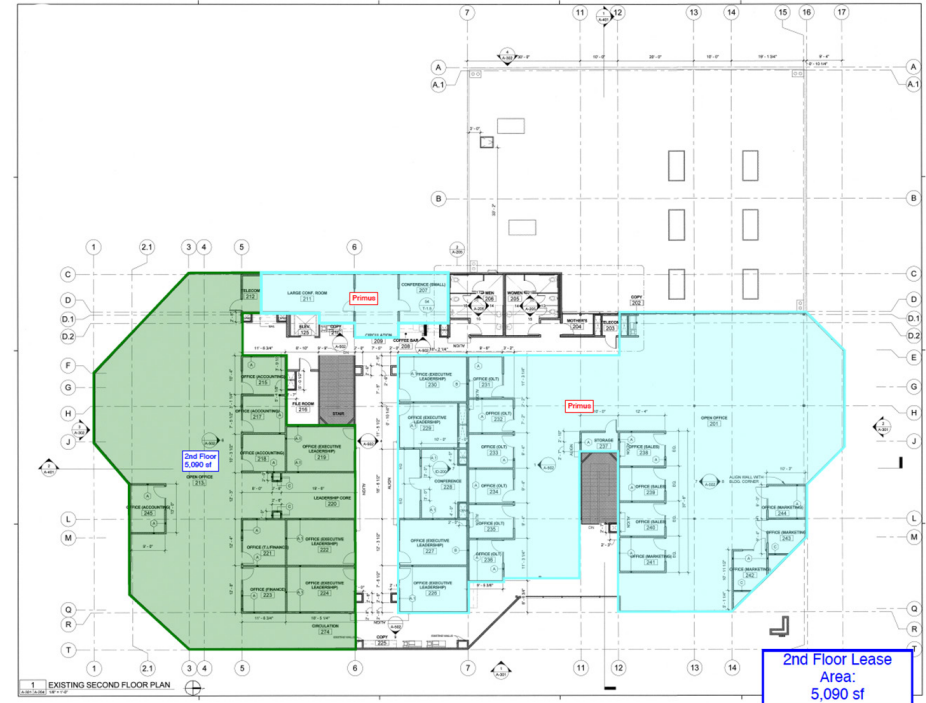
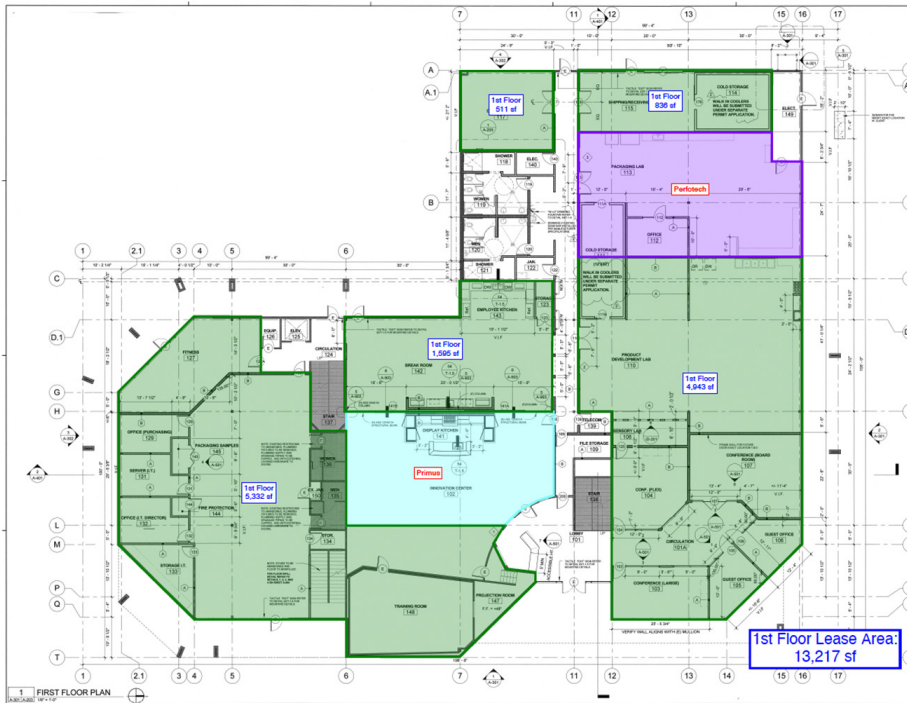
Brian LaCabe
805.928.2800 ext. 103
BLacabe@PacificaCRE.com
Lic #01026699

2520 Professional Parkway | Santa Maria, CA 93455 | PacificaCommercialRealty.com



Information contained herein has been obtained from the owner of the property or from other sources deemed reliable. We have no reason to doubt its accuracy, but we do not guarantee it.

FOR LEASE 2811 AIRPARK DRIVE | SANTA MARIA, CA



Beautiful Class "A" office space in a recently remodeled professional building in Santa Maria's R&D sector. Attached floor plans show locations of existing tenancy and available space if leased to multiple tenants. Ownership in the process of converting existing first floor laboratories to office space. Building amenities include shared break area, reception area and theater room. Conveniently located near the Santa Maria airport with plenty of on-site parking.

Chris Garner
 805.928.2800 ext. 104
 CGarner@PacificaCRE.com
 Lic #01010310

Brian LaCabe
 805.928.2800 ext. 103
 BLacabe@PacificaCRE.com
 Lic #01026699

2520 Professional Parkway | Santa Maria, CA 93455 | PacificaCommercialRealty.com



Information contained herein has been obtained from the owner of the property or from other sources deemed reliable. We have no reason to doubt its accuracy, but we do not guarantee it.

FOR LEASE 2811 AIRPARK DRIVE | SANTA MARIA, CA



2520 Professional Parkway | Santa Maria, CA 93455 | PacificaCommercialRealty.com



Information contained herein has been obtained from the owner of the property or from other sources deemed reliable. We have no reason to doubt its accuracy, but we do not guarantee it.