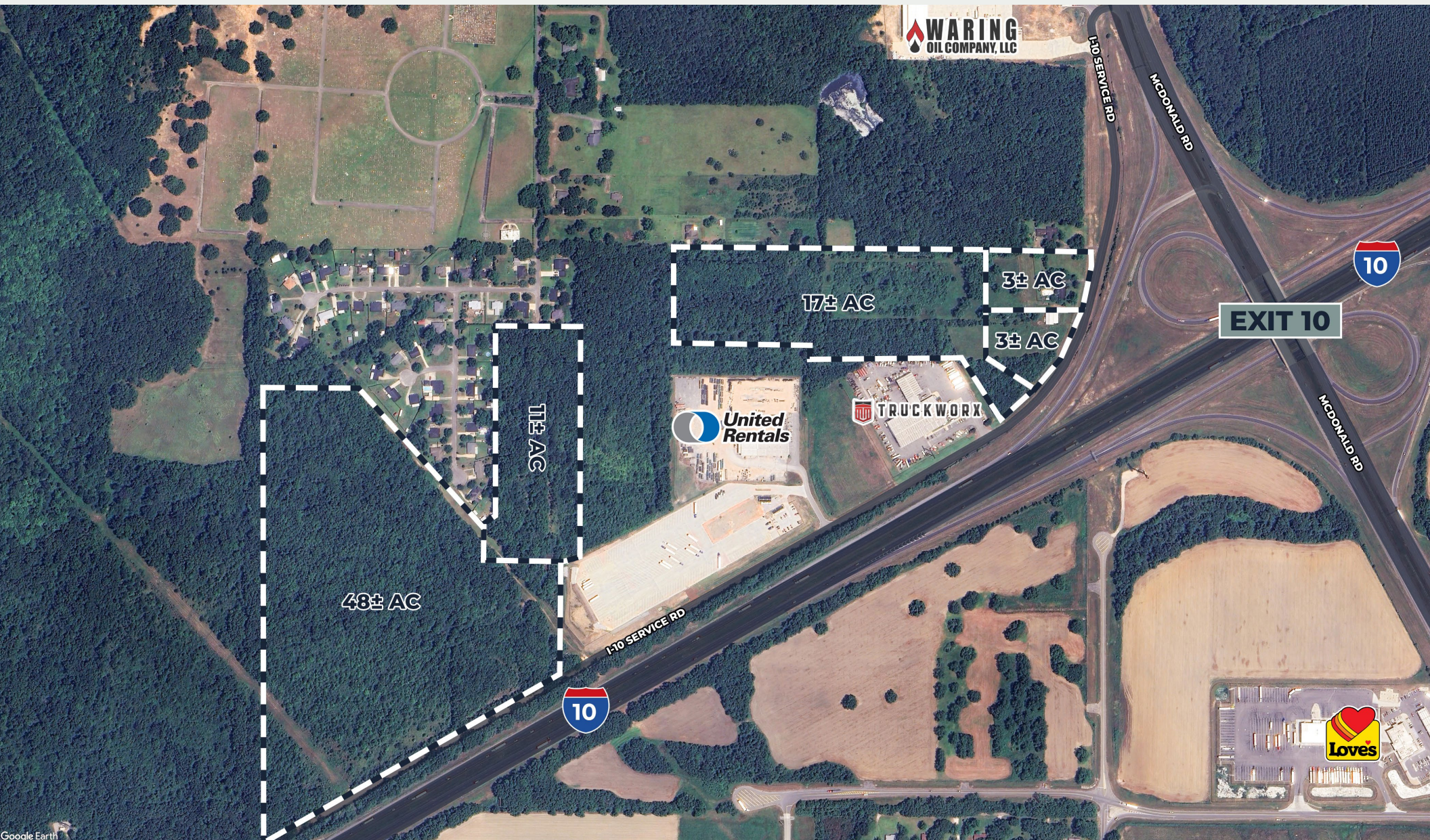


FOR SALE

82± AC WITH I-10 VISIBILITY

McDonald Rd & I-10 | Irvington



Pete Riehm, SIOR

251.442.4349 | priehm@cre-mobile.com



CRE
MOBILE
CRE-MOBILE.COM



PROPERTY DESCRIPTION



SIZE

82± AC Total - Will subdivide



ZONE

County - Unzoned



VISIBILITY

Visibility from I-10



FRONTAGE

Over 2,000' of total frontage on I-10 Service Road



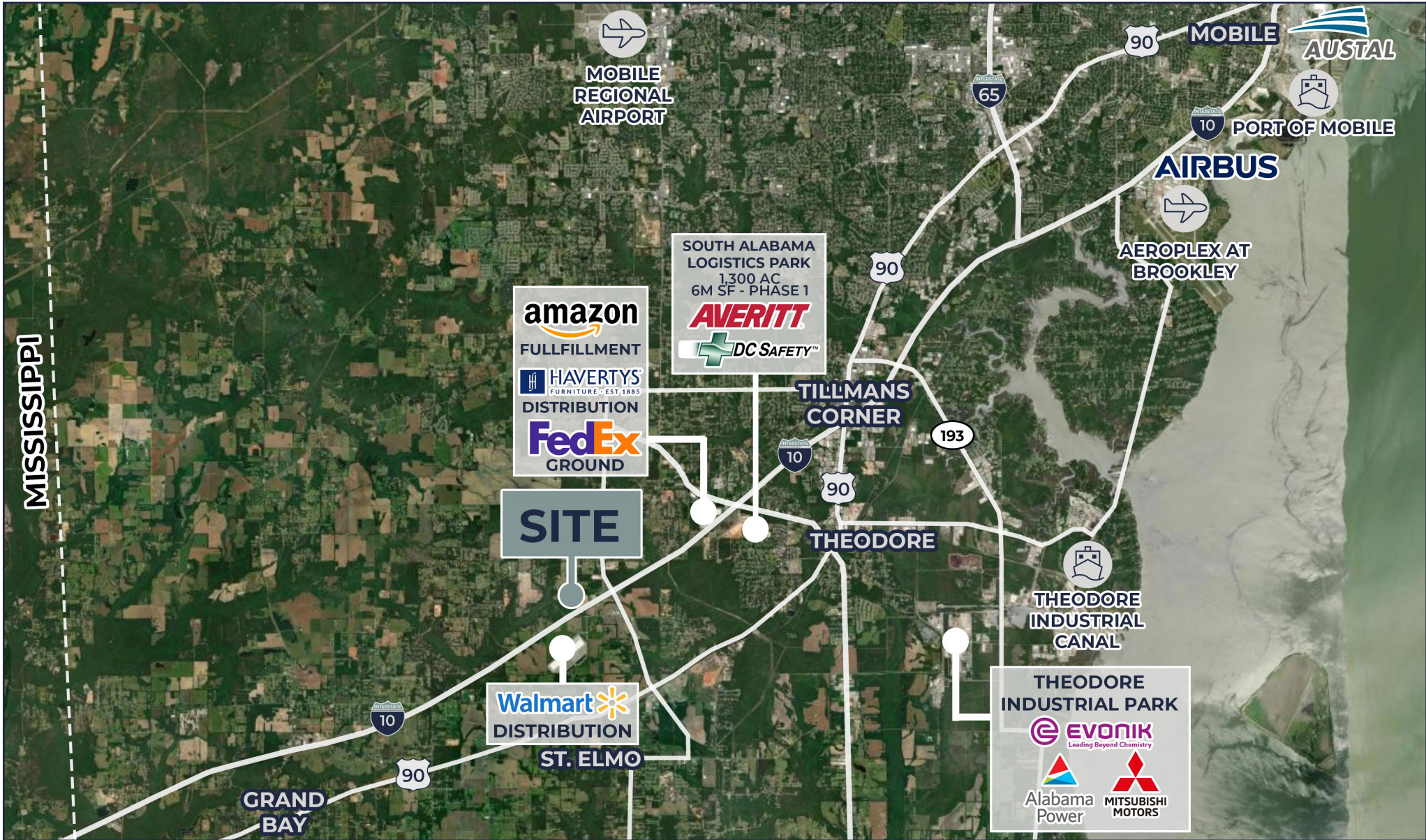
IDEAL LOCATION

Less than 0.5 miles from I-10

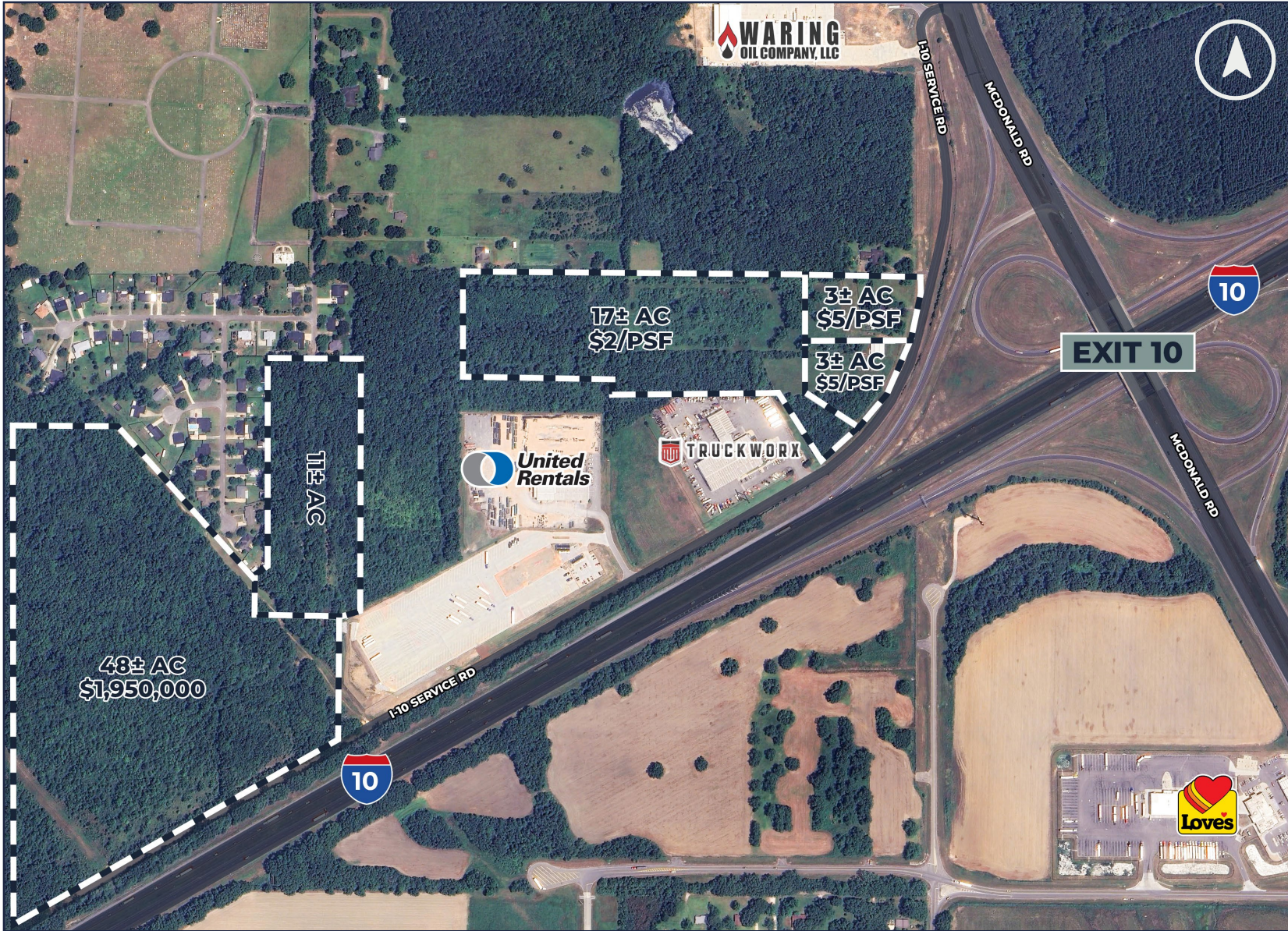


PRICE

See page 4



NO WARRANTY OR REPRESENTATION, EXPRESS OR IMPLIED, IS MADE AS TO THE ACCURACY OF THE INFORMATION CONTAINED HEREIN, AND THE SAME IS SUBMITTED SUBJECT TO ERRORS, OMISSIONS, CHANGE OF PRICE, RENTAL OR OTHER CONDITIONS, PRIOR SALE, LEASE OR FINANCING, OR WITHDRAWAL WITHOUT NOTICE, AND OF ANY SPECIAL LISTING CONDITIONS IMPOSED BY OUR PRINCIPALS. NO WARRANTIES OR REPRESENTATIONS ARE MADE AS TO THE CONDITION OF THE PROPERTY NOR ANY HAZARDS CONTAINED THEREIN ARE ANY TO BE IMPLIED.



DISTANCES TO NOTABLE LOCATIONS

I-10	0.3 miles
I-65	10 miles
Hwy 90	4 miles
MS State Line	11.5 miles
Brookley	14 miles
Port of Mobile	18 miles

Distance measured as driving distance

NO WARRANTY OR REPRESENTATION, EXPRESS OR IMPLIED, IS MADE AS TO THE ACCURACY OF THE INFORMATION CONTAINED HEREIN, AND THE SAME IS SUBMITTED SUBJECT TO ERRORS, OMISSIONS, CHANGE OF PRICE, RENTAL OR OTHER CONDITIONS, PRIOR SALE, LEASE OR FINANCING, OR WITHDRAWAL WITHOUT NOTICE, AND OF ANY SPECIAL LISTING CONDITIONS IMPOSED BY OUR PRINCIPALS. NO WARRANTIES OR REPRESENTATIONS ARE MADE AS TO THE CONDITION OF THE PROPERTY NOR ANY HAZARDS CONTAINED THEREIN ARE ANY TO BE IMPLIED.