

23521 & 23537 TELEGRAPH RD.
BROWNSTOWN TWP., MICHIGAN

INVESTMENT SALE - OFFICE
15,200 Square Feet



**SIGNATURE
ASSOCIATES**
KNOW SIGNATURE | KNOW RESULTS

CHIRCO ENTERPRISE CENTER



PROPERTY FEATURES

- Fully leased office buildings for sale
- (2) 7,600 square foot buildings – each occupied by a single tenant
- Well-maintained by the original builder
- Built in 2003 on 1.59 acres
- 66 parking spaces
- Contact Broker for financials
- Sale Price: \$2,623,000 (\$172.57/sq. ft.)

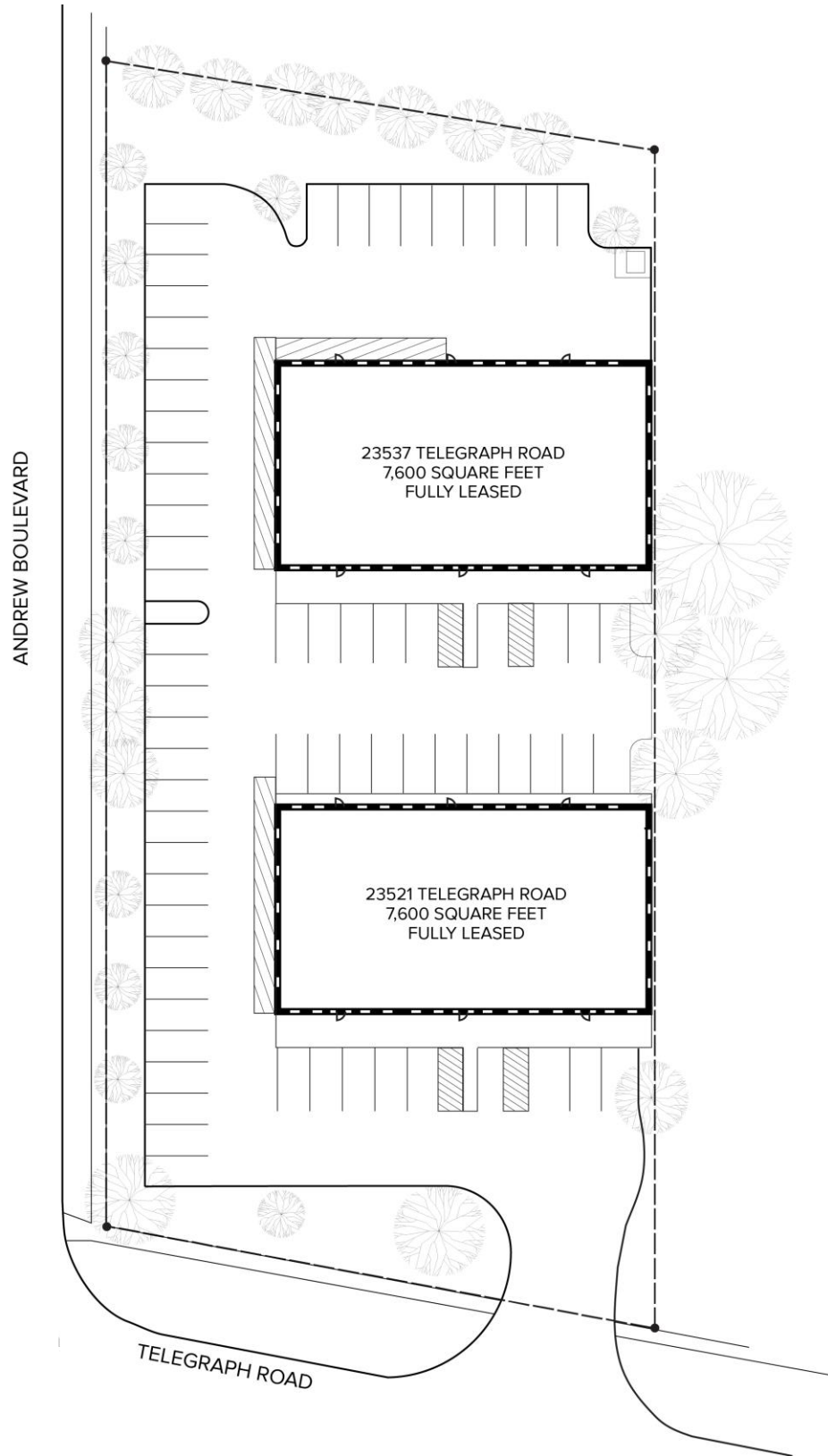


For more information, please contact:

JUSTIN GAFFREY
(248) 799 3143
jgaffrey@signatureassociates.com

SIGNATURE ASSOCIATES
One Towne Square, Suite 1200
Southfield, MI 48076
www.signatureassociates.com

Site Plan



For more information, please contact:

JUSTIN GAFFREY
(248) 799 3143
jgaffrey@signatureassociates.com

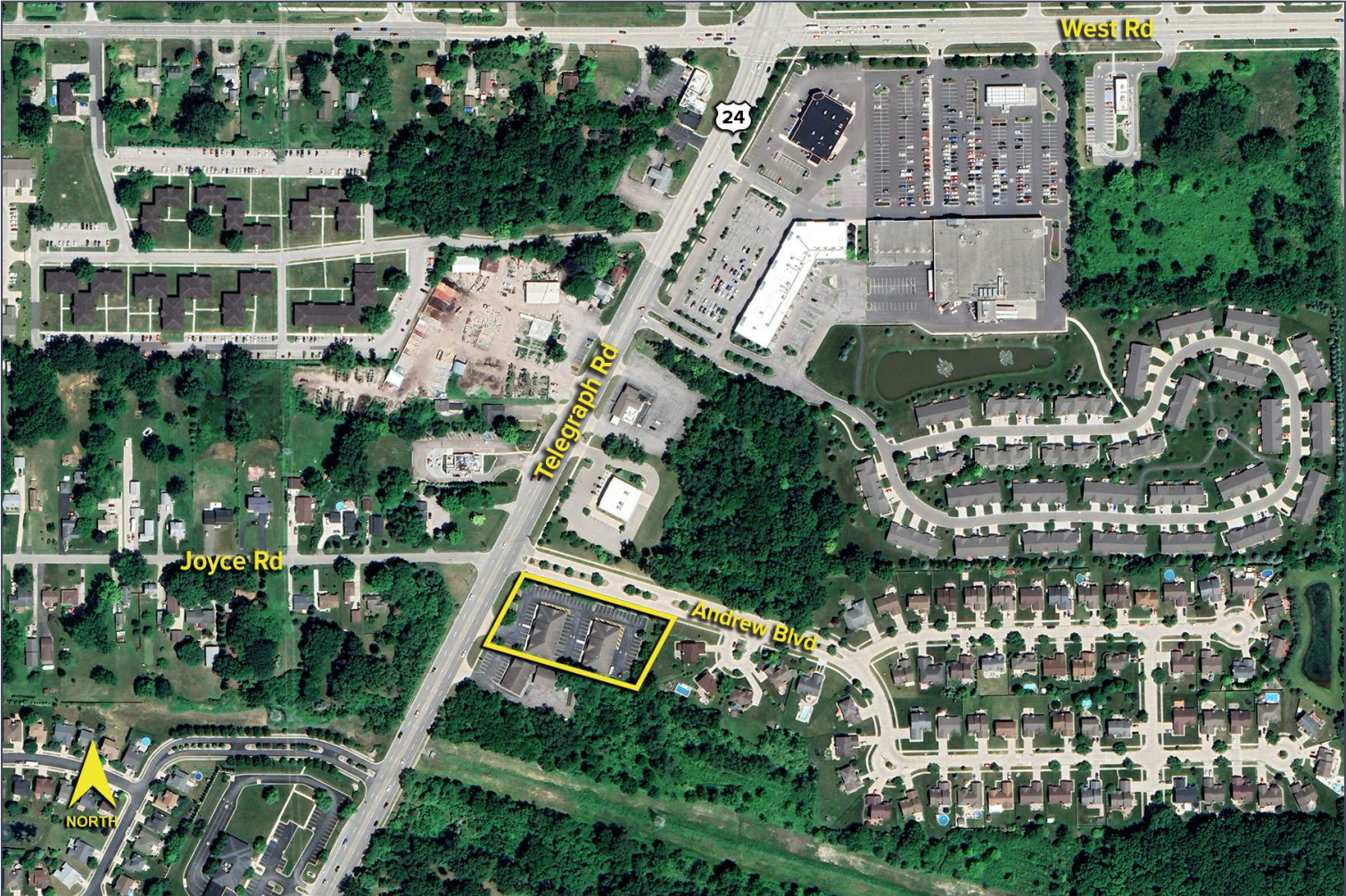
SIGNATURE ASSOCIATES
One Towne Square, Suite 1200
Southfield, MI 48076
www.signatureassociates.com

23521 & 23537 Telegraph Rd. – Brownstown Twp., MI

Investment Sale - Office

15,200
Square Feet

Aerial



For more information, please contact:

JUSTIN GAFFREY
(248) 799 3143
jgaffrey@signatureassociates.com

SIGNATURE ASSOCIATES
One Towne Square, Suite 1200
Southfield, MI 48076
www.signatureassociates.com

Information is subject to verification and no liability for errors or omissions is assumed. Price is subject to change and listing withdrawal.