

## Available Units

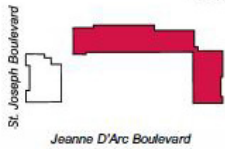
Unit 123 - 3,354 sq.ft.

The lower floor of the upper building - approx. 3,000 sq.ft.

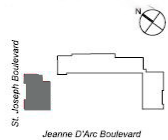
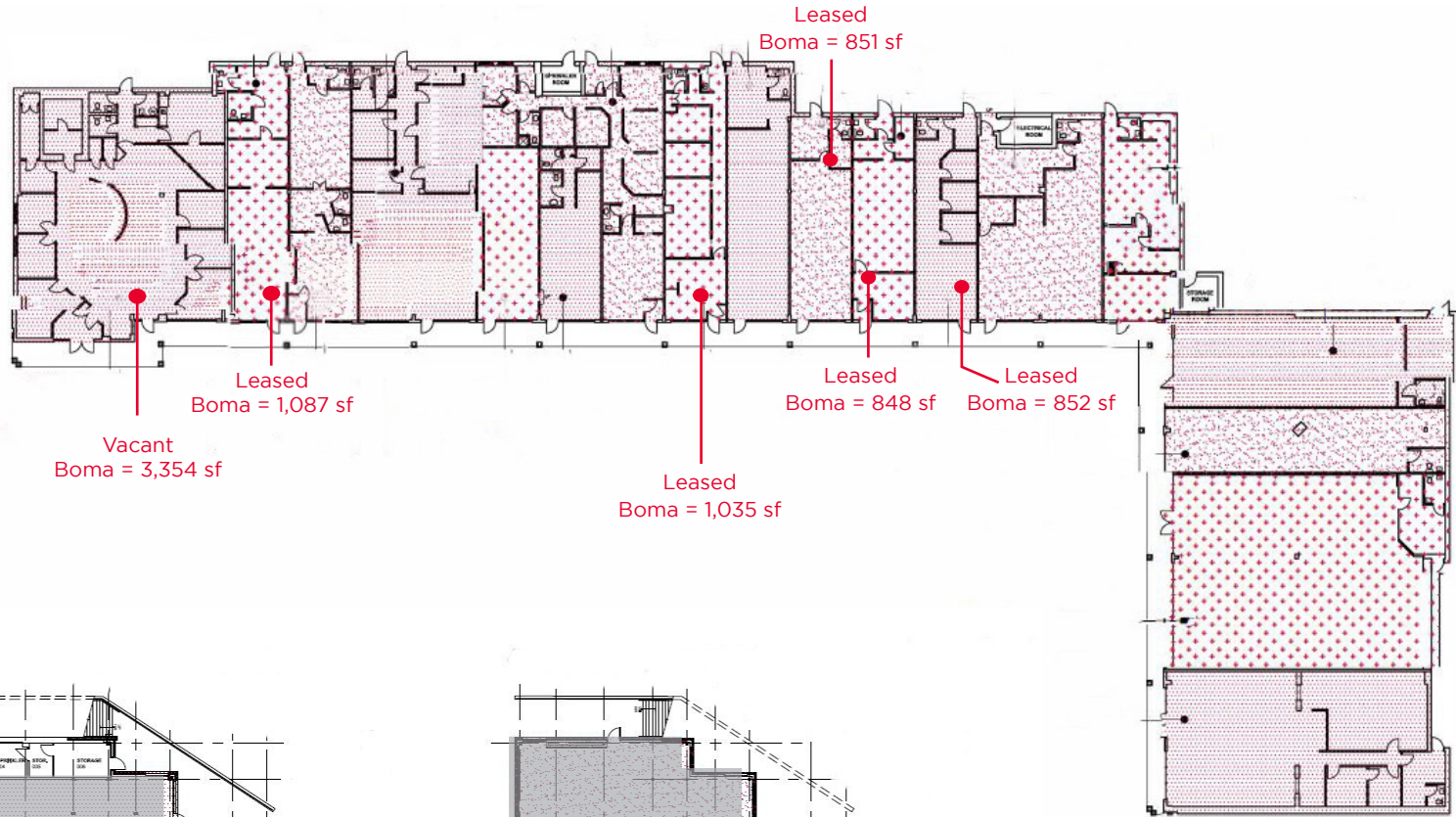
**NET RENT: \$18.00-\$22.00 PSF**  
**ADDITIONAL RENT: \$11.42 PSF**

## Potential Tenants

Fitness Studio  
Medical Clinic  
Bakery  
Martial Arts Studio  
Restaurant  
Professional Services  
Specialty Retailers

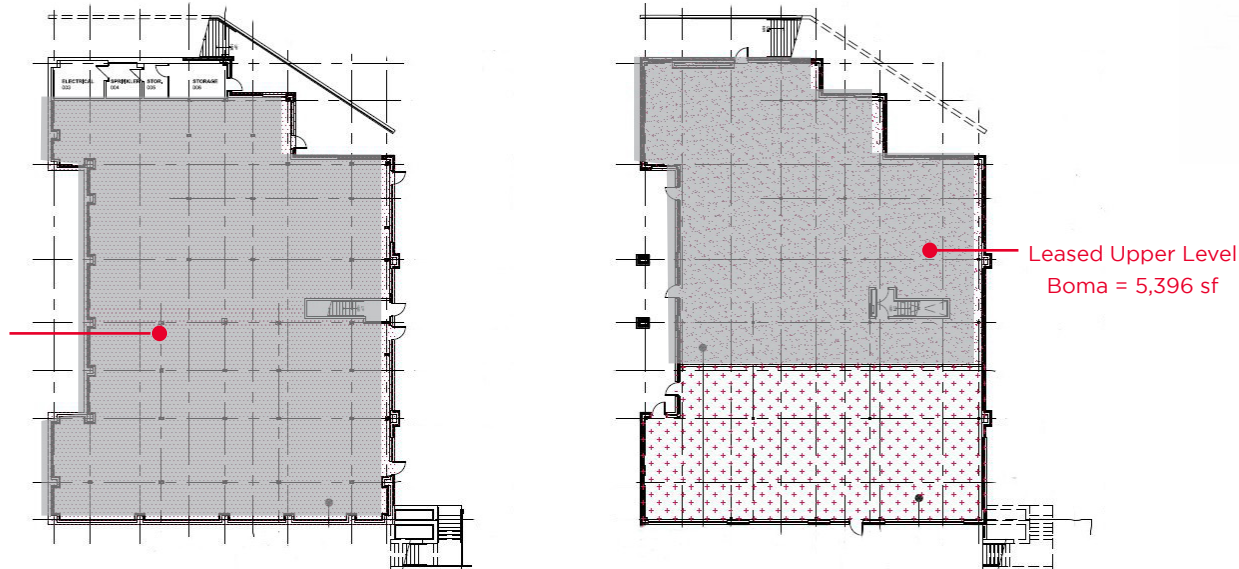


**Building 1**



**Building 2**

Vacant Lower Level  
Boma = 3,000 sf



55 Metcalfe Street  
Suite 400  
Ottawa ON K1P 6L5  
T +1 613 236 7777  
F +1 613 236 5958  
cwottawa.com

**LOCATION**

Place Jeanne D'Arc is located in Ottawa's east end suburb of Orleans. The plaza is located just off the first Queensway exit as you enter Orleans at the intersection of the two prominent suburban roads Jean D'Arc and St. Joseph Boulevard. The high profile corner location provides excellent exposure to vehicular traffic and public transit is located directly in front of the plaza. The plaza is in close proximity to many primary and secondary schools, businesses and one major regional mall. Within a 5 km radius of the plaza there are over 100,000 residence and 52.3% of households have a household income of over \$100,000.



**Neil Mason**  
Associate Vice President  
Sales Representative  
+1 613 780 1571  
nmason@cwottawa.com

55 Metcalfe Street  
Suite 400  
Ottawa ON K1P 6L5  
**T** +1 613 236 7777  
**F** +1 613 236 5958  
cwottawa.com