

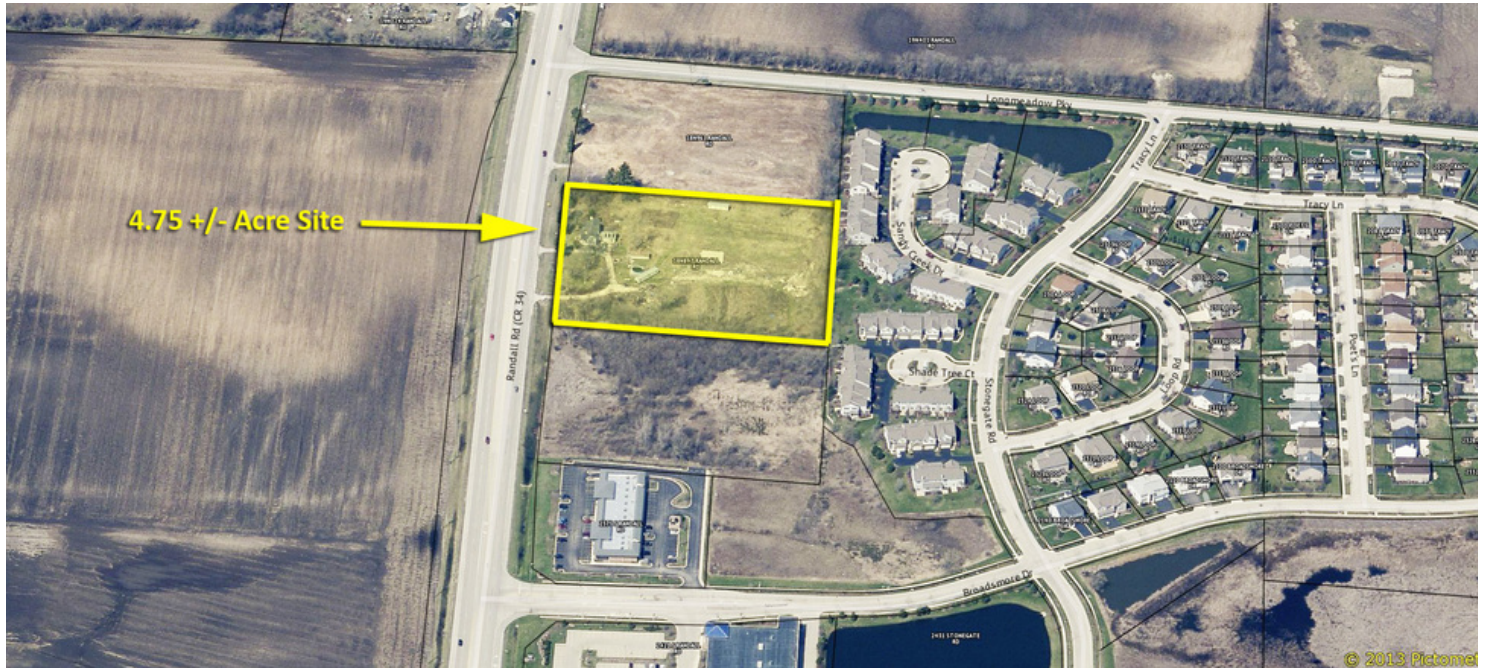
# 4.75 ACRES

## Land Property For Sale



**BROWN**  
COMMERCIAL GROUP, INC.

**4.75 ACRES RANDALL RD., ALGONQUIN, IL 60102**

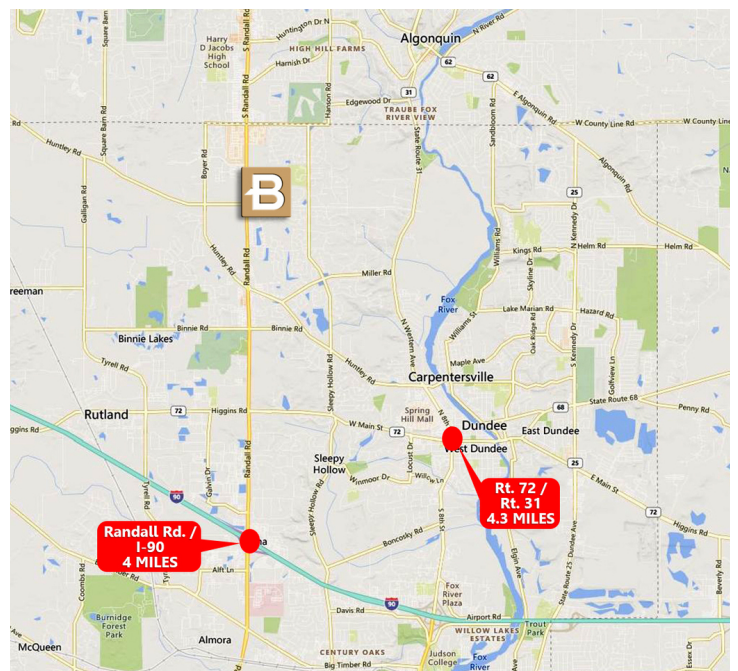


### LOCATION DESCRIPTION

One lot south of Longmeadow Parkway. Per the Village of Algonquin and Kane County Development of Transportation plans, Longmeadow Parkway and Randall Road is slated to become a 4-way signalized intersection with a to-be-extended Huntley Road.

### CUSTOM HEADER

- 4.75 Acre site
- PIN: 03-08-100-020
- Utilities are at and/or near site
- Approximately 360' frontage
- Kane County
- Currently zoned residential with redevelopment potential
- Across from new industrial park
- Sale Price: \$7.97/SF



**JIM PIETRAROSSO**

847.758.9200 x314

JIMP@BROWNCOMMERCIALGROUP.COM

**DAN BROWN**

847.758.9200 x302

DBROWN@BROWNCOMMERCIALGROUP.COM

BROWNCOMMERCIALGROUP.COM // 1400 E. HIGGINS RD. SUITE A, ELK GROVE VILLAGE, IL 60007 // 847.758.9200

No warranties or representations is made as to the accuracy of the foregoing information. Terms and availability are subject to changes or withdrawal without notice

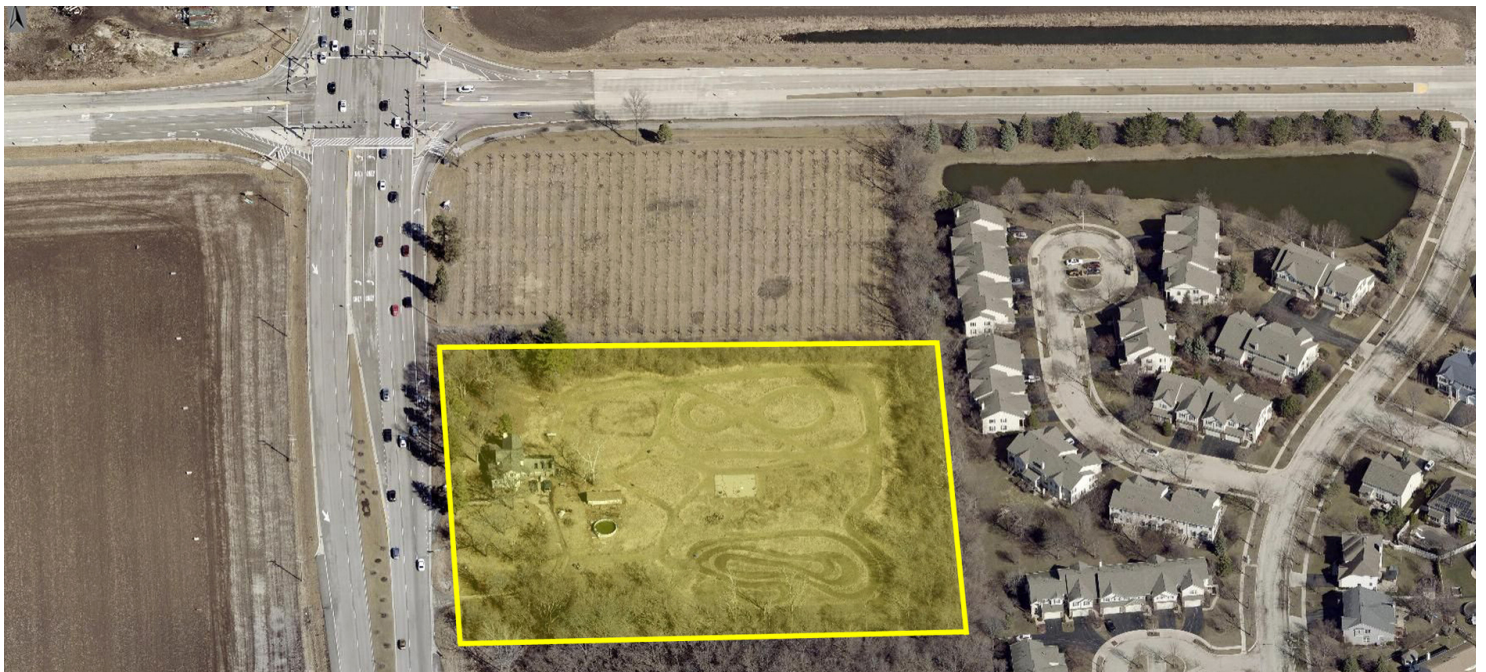
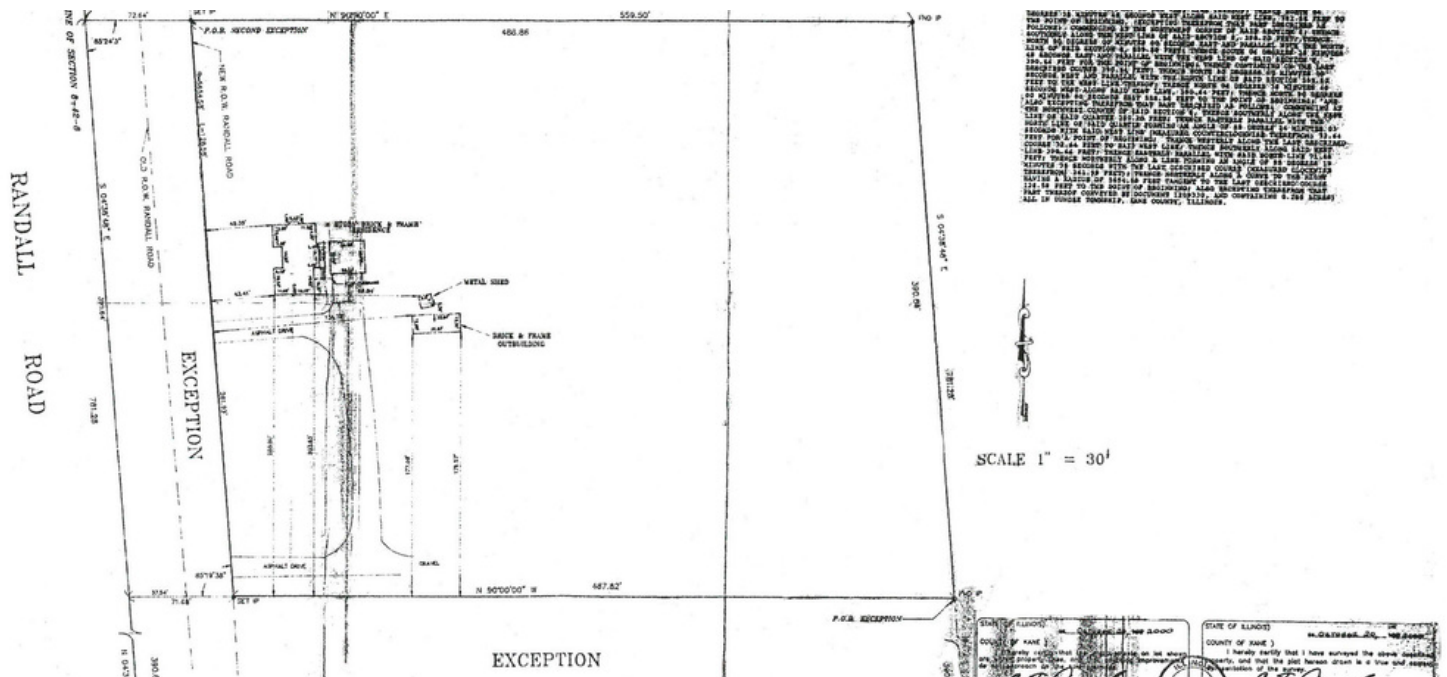
# 4.75 ACRES

## Land Property For Sale



**BROWN**  
COMMERCIAL GROUP, INC.

**4.75 ACRES RANDALL RD., ALGONQUIN, IL 60102**



**JIM PIETRAROSSO**

847.758.9200 x314

JIMP@BROWNCOMMERCIALGROUP.COM

**DAN BROWN**

847.758.9200 x302

DBROWN@BROWNCOMMERCIALGROUP.COM

BROWNCOMMERCIALGROUP.COM // 1400 E. HIGGINS RD. SUITE A, ELK GROVE VILLAGE, IL 60007 // 847.758.9200

No warranties or representations is made as to the accuracy of the foregoing information. Terms and availability are subject to changes or withdrawal without notice