

# EASTGATE BUSINESS PARK

## FOR SALE/LEASE

Affordable warehousing with some units offering heavy power, dock and grade loading

10,816 SF to 39,528 SF Contiguous Space Available For Lease



**Chris Van Den Biggelaar**  
Associate Partner  
780 701 3287  
[chris.biggelaar@cwedm.com](mailto:chris.biggelaar@cwedm.com)

**Doug Greschuk**  
Partner  
780 722 4344  
[doug.greschuk@cwedm.com](mailto:doug.greschuk@cwedm.com)

**CUSHMAN & WAKEFIELD**  
Edmonton  
Suite 2700, TD Tower  
10088 - 102 Avenue  
Edmonton, AB T5J 2Z1  
[www.cwedm.com](http://www.cwedm.com)

## PROPERTY DETAILS

- Quick and convenient access to 50th Street and the Anthony Henday (Hwy 216) via Baseline Road.
- Close to amenities including food, fitness and grocery.
- Multiple leasing options.
- Professionally managed property, means you can focus on your business.
- Ample marshaling for trailers and parking.

## AERIAL



## LEASE AVAILABILITIES

**Building 1** 4741-4745 93 Avenue  
14,999 SF (LEASED)

4747-4753 93 Avenue  
20,343 SF Available

**Building 2**

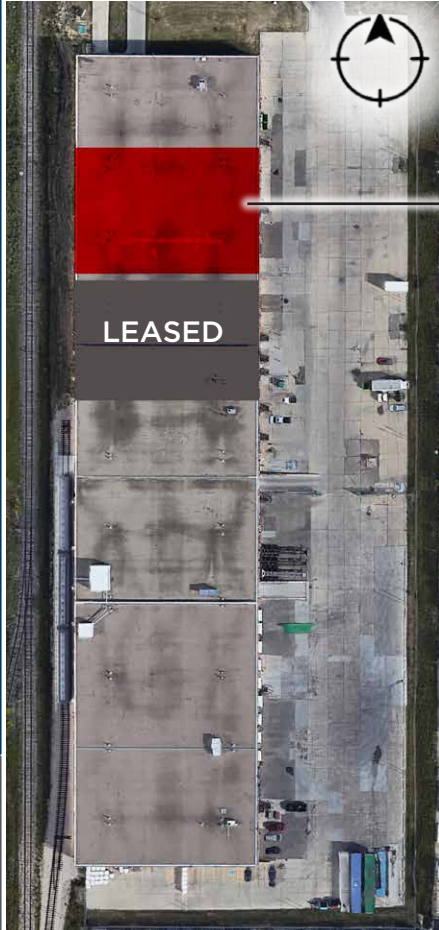
4728 94 Avenue  
15,166 SF (LEASED)  
4732 94 Avenue  
10,816SF Available

**Building 3**

4770-94 Avenue  
39,528 SF Available  
4790-94 Avenue  
16,886 SF (LEASED)

# Building 1

4715-4757 93rd Avenue Edmonton, AB	Lighting: T5 and LED
Legal: 7820294/9/2	Column Grid: $\pm 32'$ x $32'$
Year Built: 1980	Lease Rate: \$6.75 Per SF
Zoning: IB (Business Industrial)	Operating Costs: \$5.07 Per SF
Site Size: 5.36 Acres	Entire Building Area: 113,673 SF
Ceiling Height: 21.5' Clear	Entire Building Sale Price: \$11,935,665
Sprinklers	



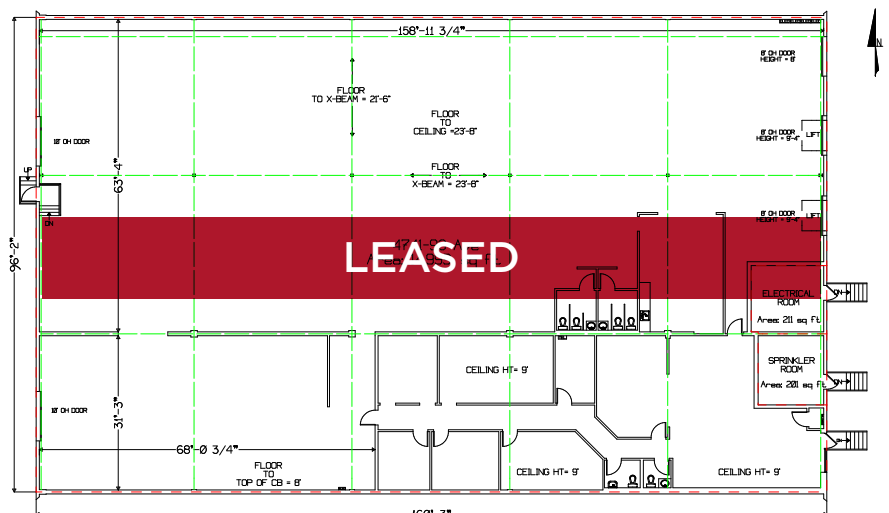
## UNIT 4747-4753 93 Avenue

Warehouse: 20,343 SF

\* no office buildout

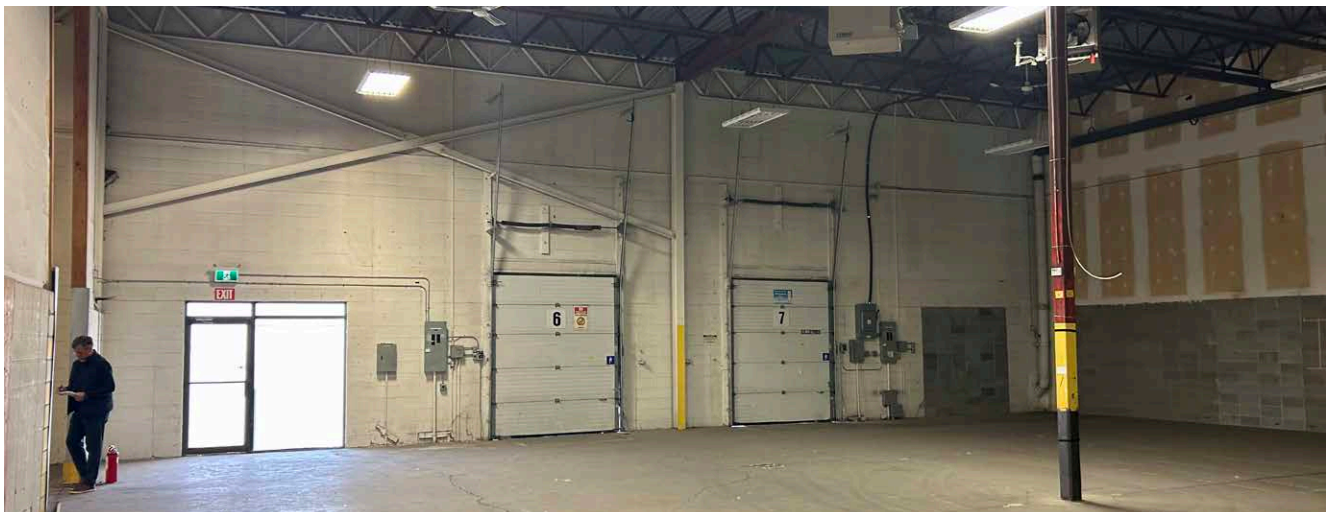
Loading: (5) Dock Doors, 4 with levelers

## BUILDING 1 FLOOR PLAN 4741-4745 93 AVENUE



# Building 1

## BUILDING PHOTOS



# Building 2

4744 94th Avenue	Lighting: T5
Legal: 7820294/9/8	Column Grid: $\pm 32' \times 32'$
Year Built: 1979	Lease Rate: \$6.75 Per SF
Zoning: IB (Business Industrial)	Operating Costs: \$5.00 Per SF
Site Size: 3.71 Acres	Entire Building Area: 81,149 SF
Ceiling Height: 21.5'	Entire Building Sale Price: \$8,520,645
Sprinklers	



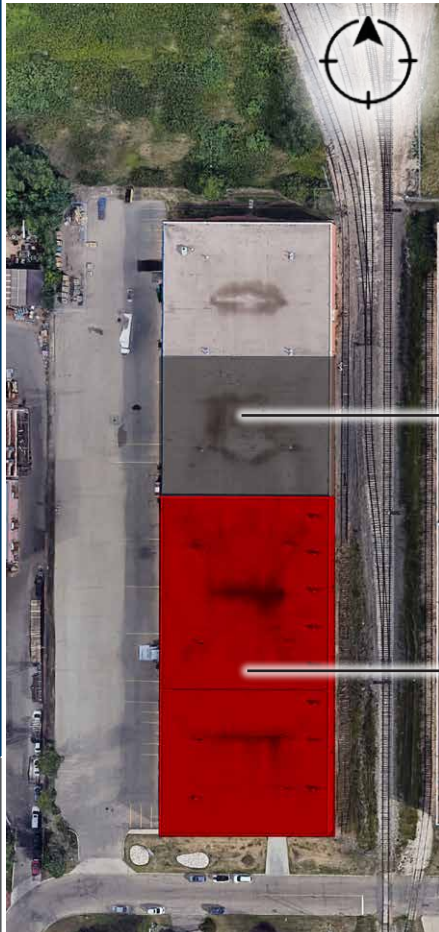
**4732 94th Avenue**  
Office: +/- 300 SF  
Warehouse: +/- 10,516 SF  
Total: +/- 10,816 SF  
Loading: (3) Dock with levelers  
Office area: Includes 3 offices

## BUILDING PHOTOS



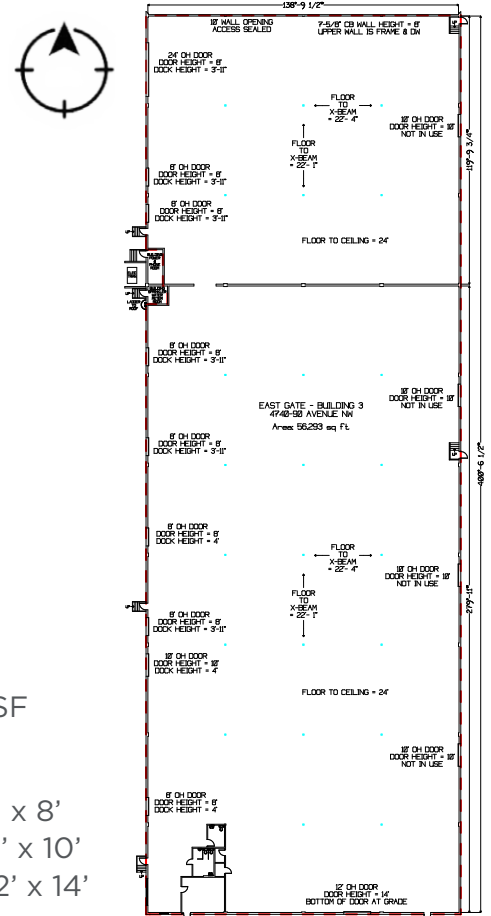
# Building 3

4770-4794 94th Avenue	Lighting: T5
Legal: 7820294/4/17	Column Grid: ±34' x 40'
Year Built: 1979	Operating Costs: \$4.54 Per SF
Zoning: IB (Business Industrial)	Entire Building Area: 71,573 SF
Site Size: 3.29 Acres	Entire Building Sale Price: \$7,515,165
Ceiling Height: 21.5'	Lease rate: \$6.75 Per SF
Sprinklers	



**UNIT 4790**  
LEASED

**UNIT 4770**  
Warehouse: 39,528 SF  
Small office/  
showroom buildout  
Loading: (5) Dock 8' x 8'  
(1) Dock 10' x 10'  
(1) Grade 12' x 14'



## BUILDING PHOTO



# AERIAL





**CUSHMAN &  
WAKEFIELD**  
Edmonton

**Chris Van Den Biggelaar**  
Associate Partner  
780 701 3287  
[chris.biggelaar@cwedm.com](mailto:chris.biggelaar@cwedm.com)

**Doug Greschuk**  
Partner  
780 722 4344  
[doug.greschuk@cwedm.com](mailto:doug.greschuk@cwedm.com)