

## Hagemann Rd

Lebanon, IL 62254

### Property Features

- 102.59 acres available off Hagemann Rd at Albers Rd
- Ideal residential subdivision site
- In the O'Fallon school district
- Sewer & water available
- Currently zoned A - Agriculture in St. Clair County
- Located 3 miles north of Scott Air Force Base

### Sale Price:

\$19,500 per Acre



For more information:

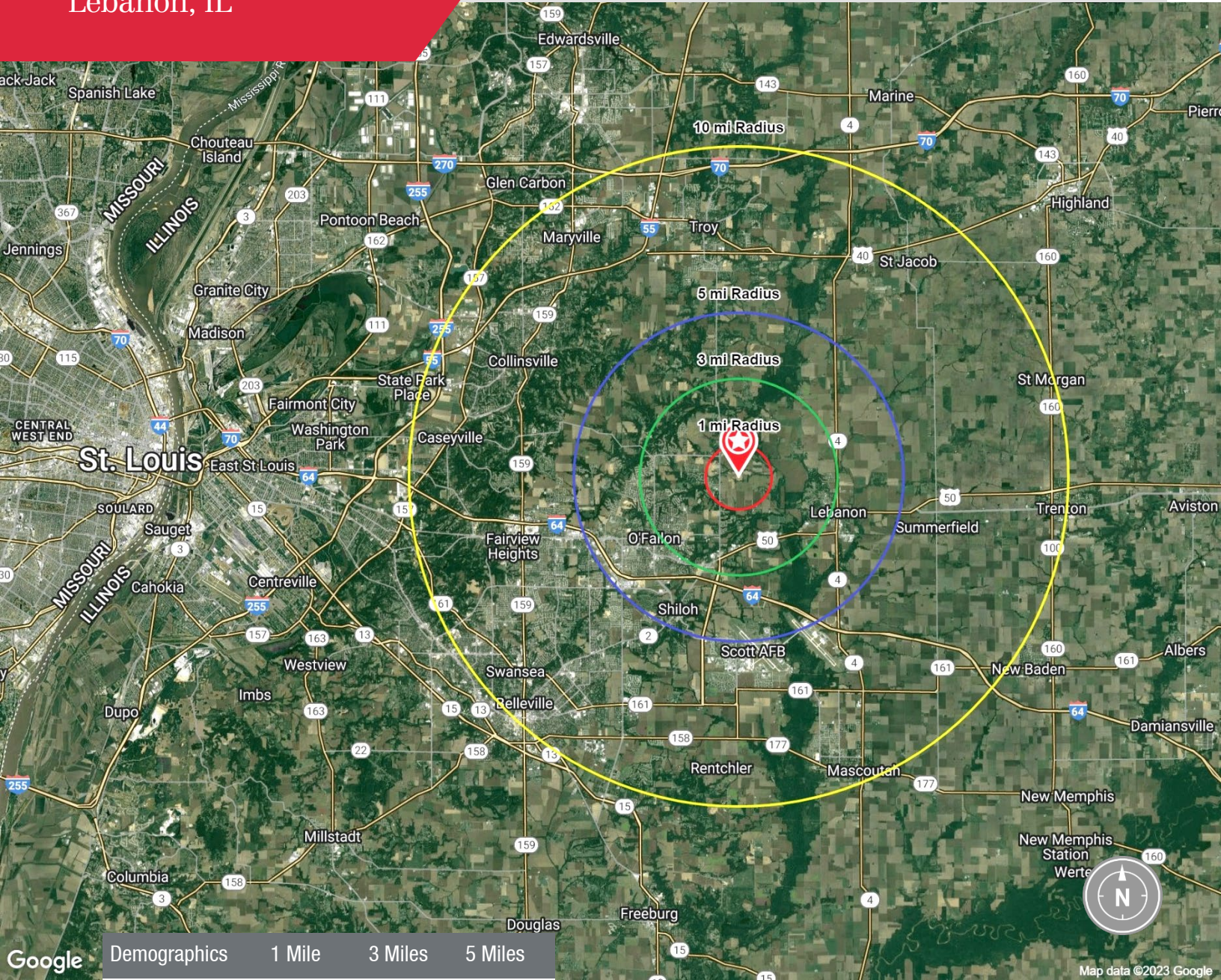
**Michelle Miller, CCIM**

314 994 4944 Direct • 636 236 9802 Mobile

[mmiller@naidesco.com](mailto:mmiller@naidesco.com)

# Aerial View

Hagemann Rd  
Lebanon, IL



Map data ©2023 Google

Demographics	1 Mile	3 Miles	5 Miles
Population	266	13,321	36,562
Households	104	4,826	14,048
Avg HH Income	\$89,525	\$128,261	\$115,809
Med HH Income	\$89,200	\$88,078	\$89,272
Med Home Value	\$198,614	\$241,914	\$231,072

For more information:

**Michelle Miller, CCIM**  
314 994 4944 Direct • 636 236 9802 Mobile  
[mmiller@naidesco.com](mailto:mmiller@naidesco.com)



8112 Maryland Ave,  
Suite 300  
St. Louis, MO 63105  
314 994 4444  
naidesco.com