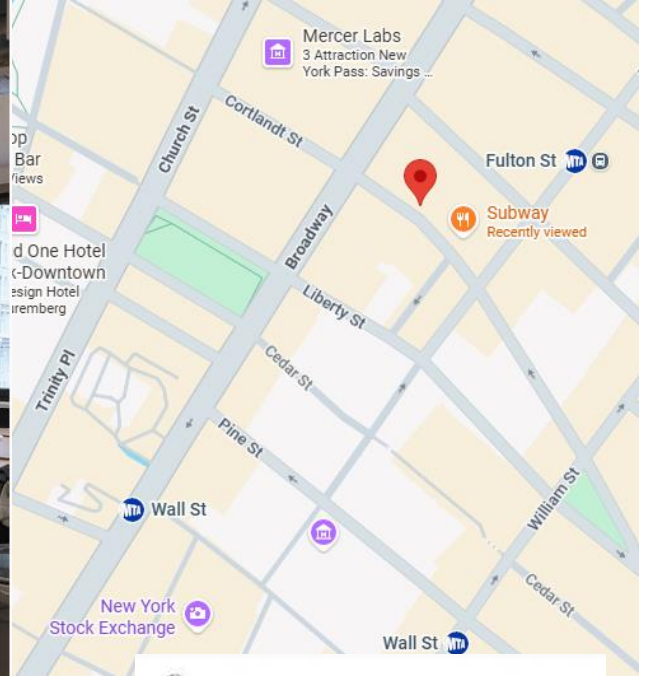


## SUBLEASE—15 MAIDEN LANE

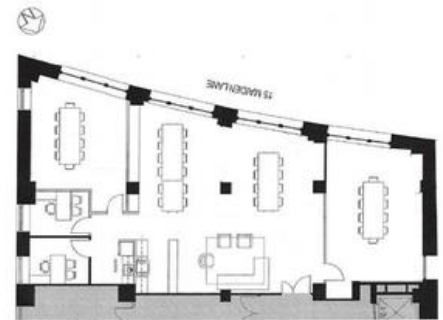


### AVAILABILITY

- 3,275 rsf (20<sup>th</sup> Floor)
- \$37.50/rsf + electric
- Immediately available
- Through 11/29/2027
- Furniture *not* included

### BUILDING FEATURES

- Attended lobby (7:00 AM – 7:00 PM)
- Proximity to WTC, Wall St, Fulton St Transit
- Owner occupied building



### SPACE HIGHLIGHTS

- Bright, natural light, south facing
- High ceilings
- Room for 20+/- desks
- 2 private offices
- 2 conference rooms
- Full kitchen area

FOR MORE INFORMATION, PLEASE CONTACT THE EXCLUSIVE SUBLEASE AGENT:  
G.E. Grace & Company, Inc. NYS Licensed Real Estate Brokers

Megan Sundquist 646-312-6806  
[Megan@GEGrace.com](mailto:Megan@GEGrace.com)

Jerry Whittaker 646-312-6807  
[Jerry@GEGrace.com](mailto:Jerry@GEGrace.com)

A commission in accordance with our principal's schedule of rates and conditions will be paid, when received by us, to the procuring broker who, having executed and delivered our brokerage agreement to us, [i.] consummates a sale, but only if as and when title passes, or [ii.] consummates a lease or sublease which has been executed by both the landlord and tenant, approved as required, and duly consented to by the over-landlord in the event of a sublease. This writing does not constitute, and shall not be construed as, an employment; and no commission shall be deemed earned, due or payable unless or until a sale, lease or sublease, as the case may be, is fully consummated. Our principal's schedule of rates and conditions is available upon request.

Although all information furnished regarding property for sale, rental or financing is from sources deemed reliable, such information has not been verified, and no express representation is made nor is any to be implied as to the accuracy thereof, and it is submitted subject to errors, omissions, change of price, rental or other conditions, prior sale, lease or financing, or withdrawal without notice.