

2000

S. Convention Center Drive 89109

LAS VEGAS, NV

±9,081 SF

Two story configuration,
±4,500 per floor.



CBRE

PRIME LOCATION



Situated in the heart of Las Vegas, just steps from the Las Vegas Convention Center and major hotels.



High pedestrian and transit traffic with proximity to three Las Vegas Monorail stations (0.6–1.1 miles).



Only 4 miles from Harry Reid International Airport, enhancing accessibility for tourists and business travelers



Located in a high-demand retail corridor with consistent growth.



Rare freestanding building opportunity in the Resort Corridor.



Las Vegas Convention Center hosted 6 million conventioners in 2024.

PROPERTY OVERVIEW



9,081 SF

Two story configuration.
±4,500 per floor



LAS VEGAS STRIP

Submarket



0.34 ACRES

Lot Size



162-09-801-003[1]

Parcel ID



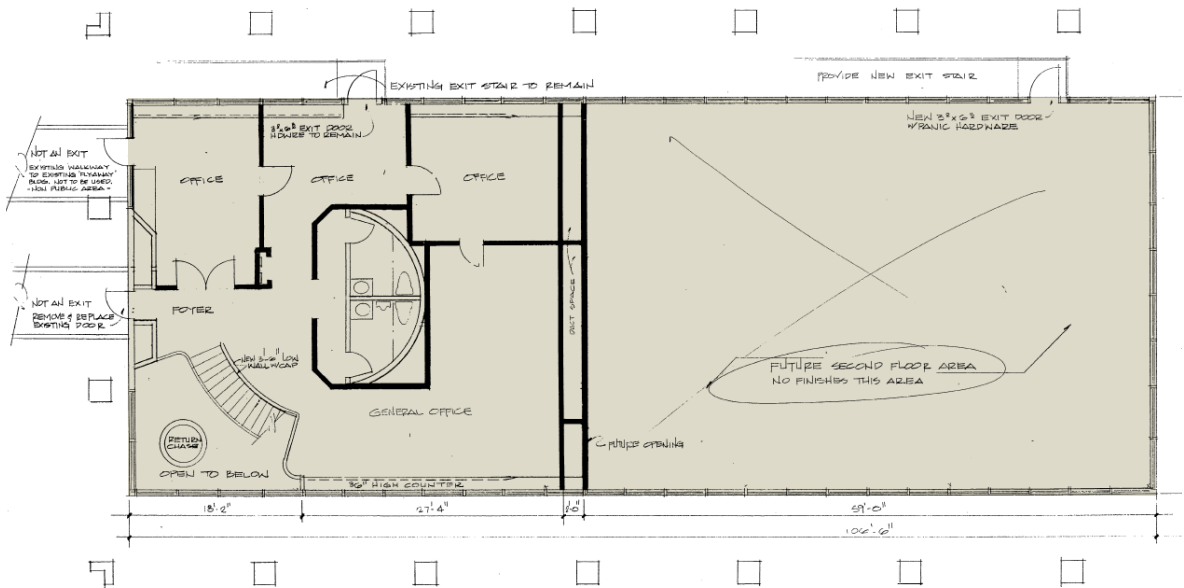
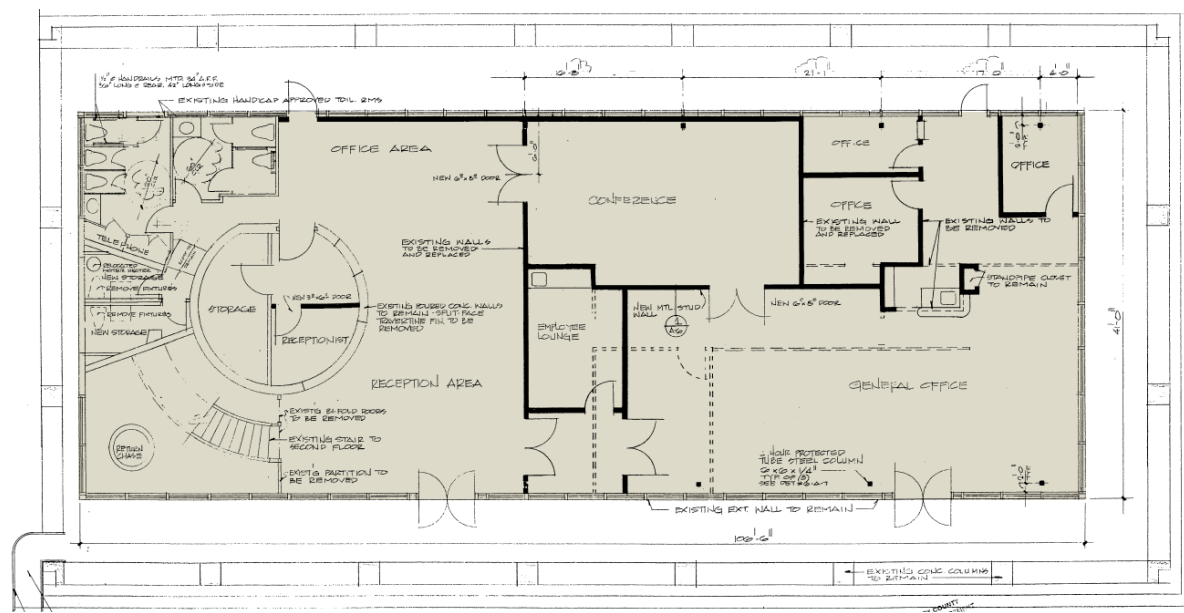
**COMMERCIAL
RESORT (CR)**

Zoning



SITE PLAN

FIRST FLOOR



SECOND FLOOR



MAP





LAS VEGAS, NV

±9,081 SF

**Two story configuration,
±4,500 per floor.**

200

S. Convention Center Drive 89109



CONTACT US

Frank Volk

Lic. BS.0012288

+1 702 369 4880

frank.volk@cbre.com

CBRE

© 2025 CBRE, Inc. All rights reserved. This information has been obtained from sources believed reliable but has not been verified for accuracy or completeness. CBRE, Inc. makes no guarantee, representation or warranty and accepts no responsibility or liability as to the accuracy, completeness, or reliability of the information contained herein. You should conduct a careful, independent investigation of the property and verify all information. Any reliance on this information is solely at your own risk. CBRE and the CBRE logo are service marks of CBRE, Inc. All other marks displayed on this document are the property of their respective owners, and the use of such marks does not imply any affiliation with or endorsement of CBRE. Photos herein are the property of their respective owners. Use of these images without the express written consent of the owner is prohibited.