

FOR LEASE

**Approx. 3,000 Sq. Ft. Office Space
1000 Vandustrial Drive, Westmont, Illinois**

Lease Rate: \$12.00 psf Gross



- Lower level office suite
- Part of a larger, multi-tenant office building
- 9' ceiling height
- Private offices, conference room, general office space
- Short or long term leases considered

- On site ownership
- Ample parking
- Recently renovated
- Private restrooms
- 5 minutes to Route 83
- 7 minutes to I-355

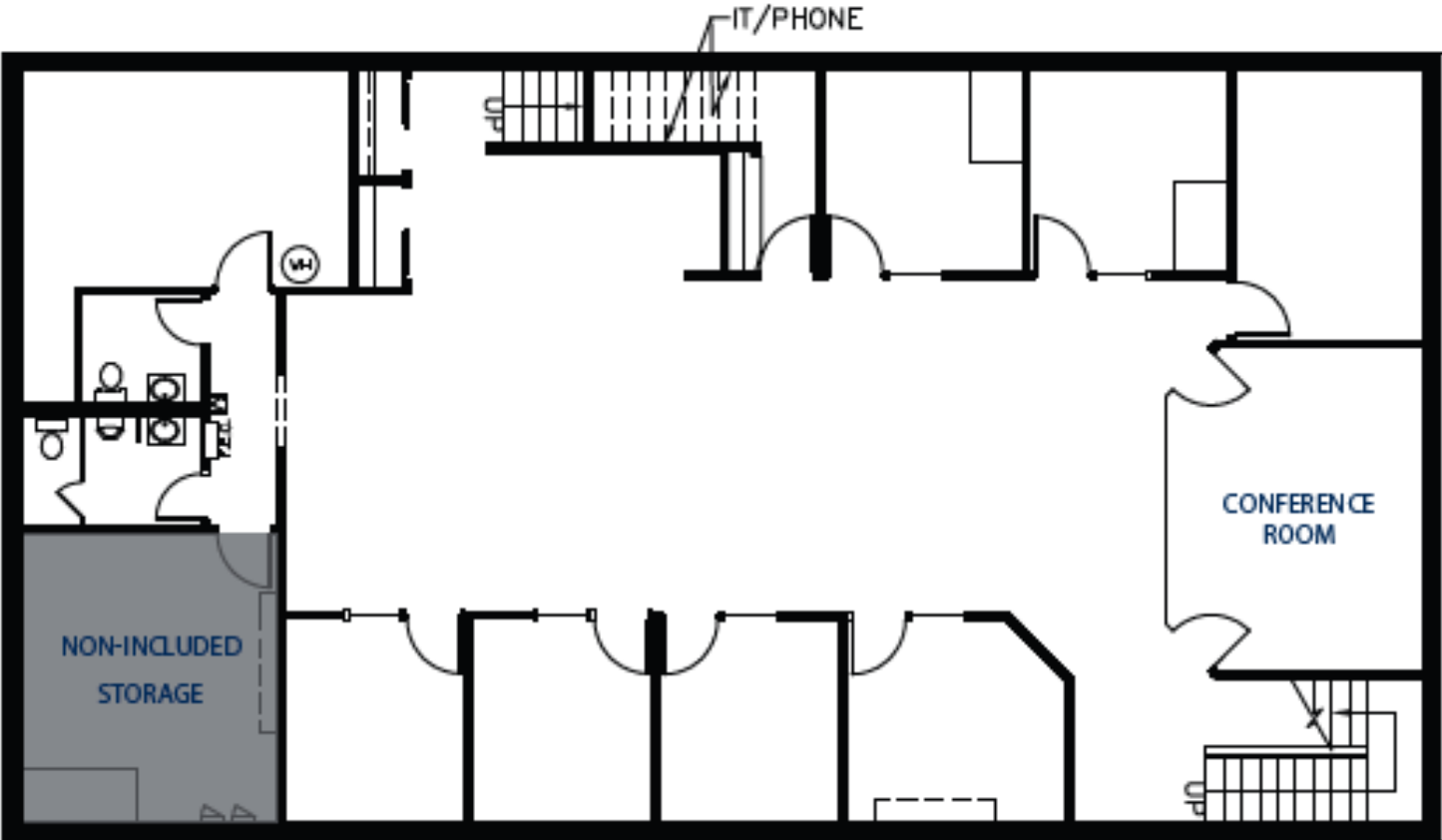


Exclusively Offered by:
Daniel Chopp
(708) 387-2640
dan@choppcommercial.com

All information herein is from sources deemed reliable but not guaranteed accurate.
Subject to errors, omissions, and to change of price and terms, prior sale or lease, all without notice.

1000 Vandustrial Drive, Westmont, Illinois

NOTE: DRAWING NOT TO SCALE



Exclusively Offered by:
Daniel Chopp
(708) 387-2640
dan@choppcommercial.com

All information herein is from sources deemed reliable but not guaranteed accurate. Subject to errors, omissions, and to change of price and terms, prior sale or lease, all without notice.

1000 Vandustrial Drive, Westmont, Illinois Interior Photos



Exclusively Offered by:
Daniel Chopp
(708) 387-2640
dan@choppcommercial.com

All information herein is from sources deemed reliable but not guaranteed accurate.
Subject to errors, omissions, and to change of price and terms, prior sale or lease, all without notice.