

# FOR LEASE



Class A Medical Office Building • 15,566 SF



## STRATFORD MEDICAL CENTER

2909 Main Street • Stratford, CT



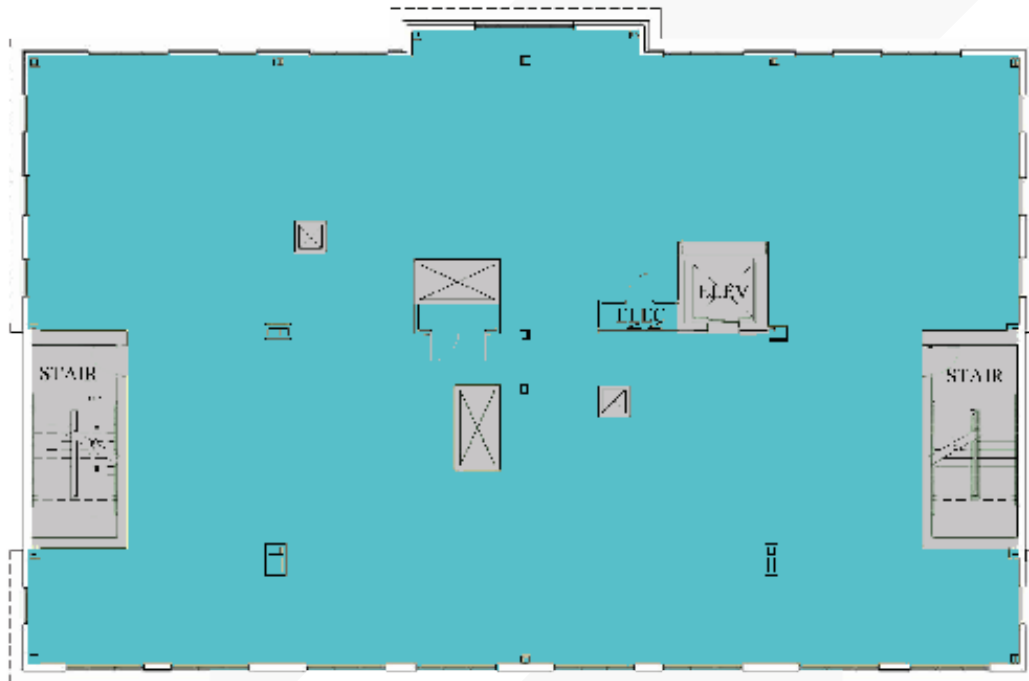
DEVELOPED BY

# BUILDING HIGHLIGHTS

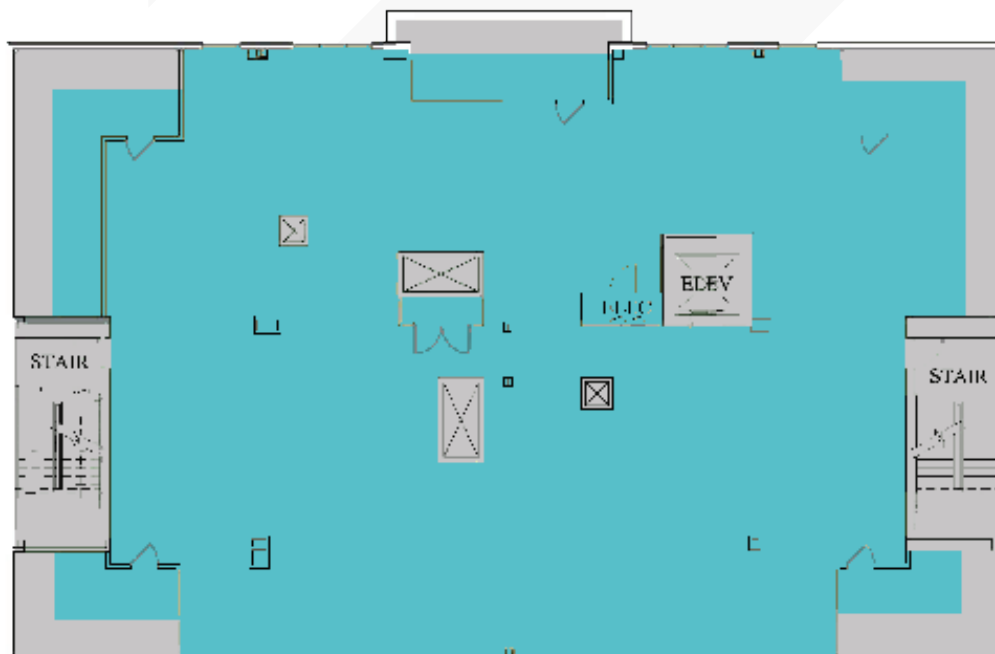
- Expert medical office ownership & concierge property management services
- Extensive exterior and interior common area renovations completed in 2022
- Touchless entry and foot activated elevator controls
- Hospital-grade air filtration and ventilation

## AVAILABLE SPACE

**2ND FLOOR – 8,249 SF, divisible**



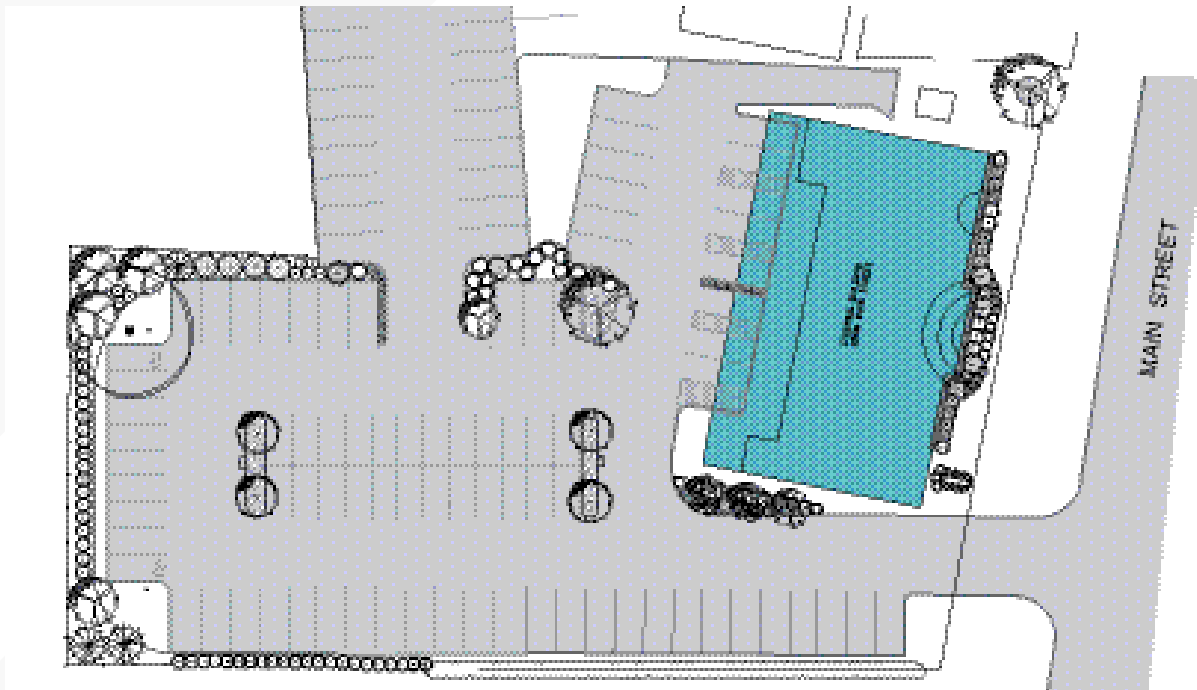
**3RD FLOOR – 7,317 SF, divisible**





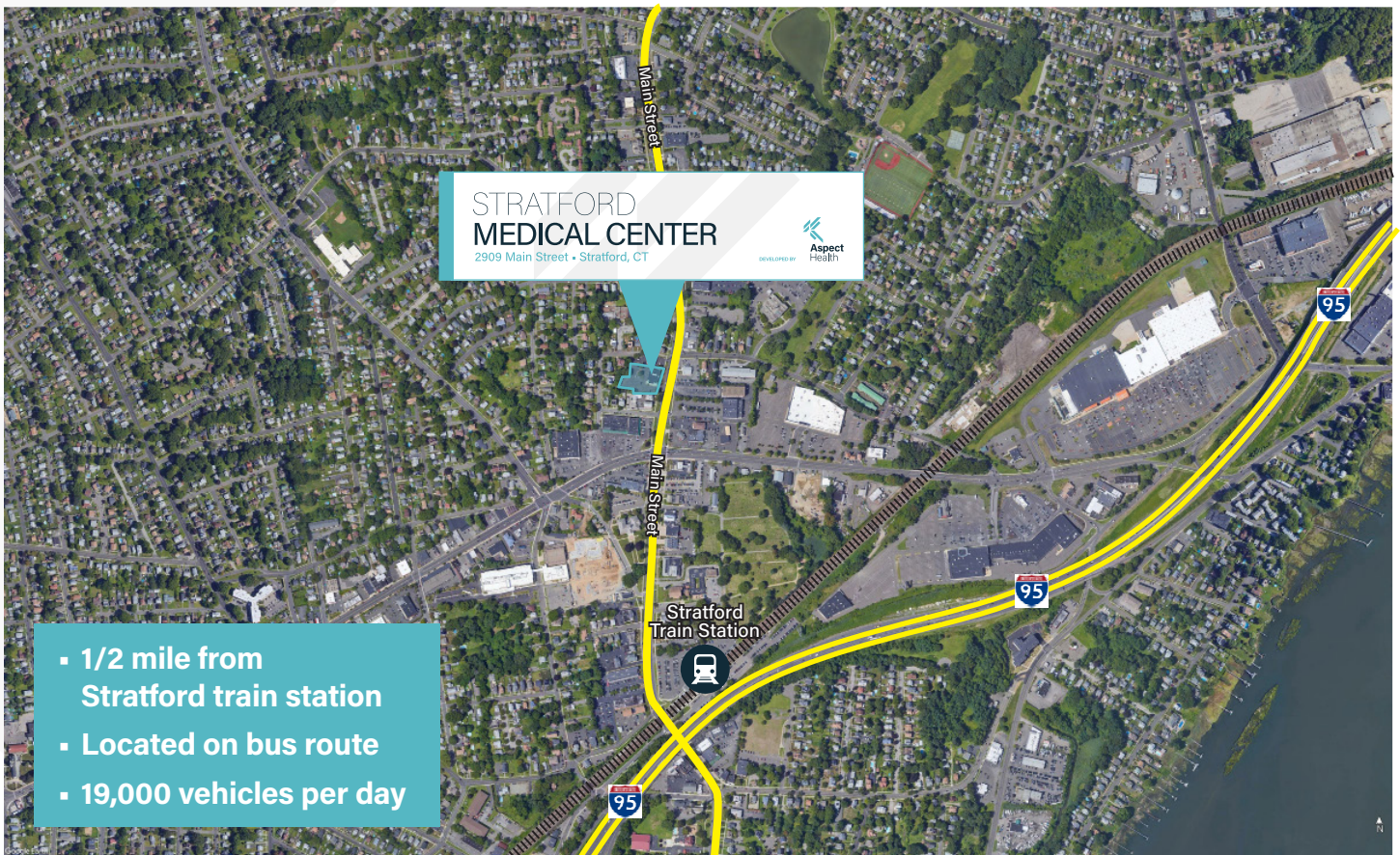
# PARKING

Expanded parking: 5 spaces per 1,000 SF with new LED site lighting



# LOCATION

Premiere location on Main Street with illuminated signage and branding opportunities.  
Easily accessible to I-95, Stratford train station and local amenities along Main Street





## About Aspect Health, LLC

Aspect Health is headquartered in Westport, Connecticut and offers a comprehensive slate of full-service real estate solutions including advisory services, site selection, entitlement, design, development and construction, as well as acquisition, property, and asset management. All Aspect Health buildings are meticulously developed through research informed design and thoughtfully managed to provide a concierge level of service for not only the physicians and staff who occupy the building, but also the patients, families, and care givers that visit the building.

For more information visit [www.aspecthealthre.com](http://www.aspecthealthre.com).



### **Sean McDonnell**

Managing Director, Healthcare Lead

O +1 203 399 1395

M +1 203 581 6600

[SeanP.McDonnell@am.jll.com](mailto:SeanP.McDonnell@am.jll.com)

Although information has been obtained from sources deemed reliable, neither Owner nor JLL makes any guarantees, warranties or representations, express or implied, as to the completeness or accuracy as to the information contained herein. Any projections, opinions, assumptions or estimates used are for example only. There may be differences between projected and actual results, and those differences may be material. The Property may be withdrawn without notice. Neither Owner nor JLL accepts any liability for any loss or damage suffered by any party resulting from reliance on this information. If the recipient of this information has signed a confidentiality agreement regarding this matter, this information is subject to the terms of that agreement. ©2022. Jones Lang LaSalle IP, Inc. All rights reserved.