



Central Park West

1875 S State Street
Orem, Utah 84097

Building amenities

- Central location
- Fiber in building
- Excellent Parking
- UTA stop right next to building
- Between UVU and BYU
- Fitness Center in neighboring Central Park East
- Common area kitchen
- Available Space
 - Terrace Level: Leased
 - Level 1: Suite 1000 - 2,831 SF
 - Level 2: Leased
 - Level 3: Leased
- Building Purchase Price: \$225 SF

FOR LEASE

\$21 SF
Full Service

CONTACT US

Dan Ford - owner/agent

Senior Vice President
+1 801 420 0137
dan.ford@colliers.com

Cody Black- owner/agent

Summit Commercial Advisors
+1 801 435 5005
cody@summitutahcre.com



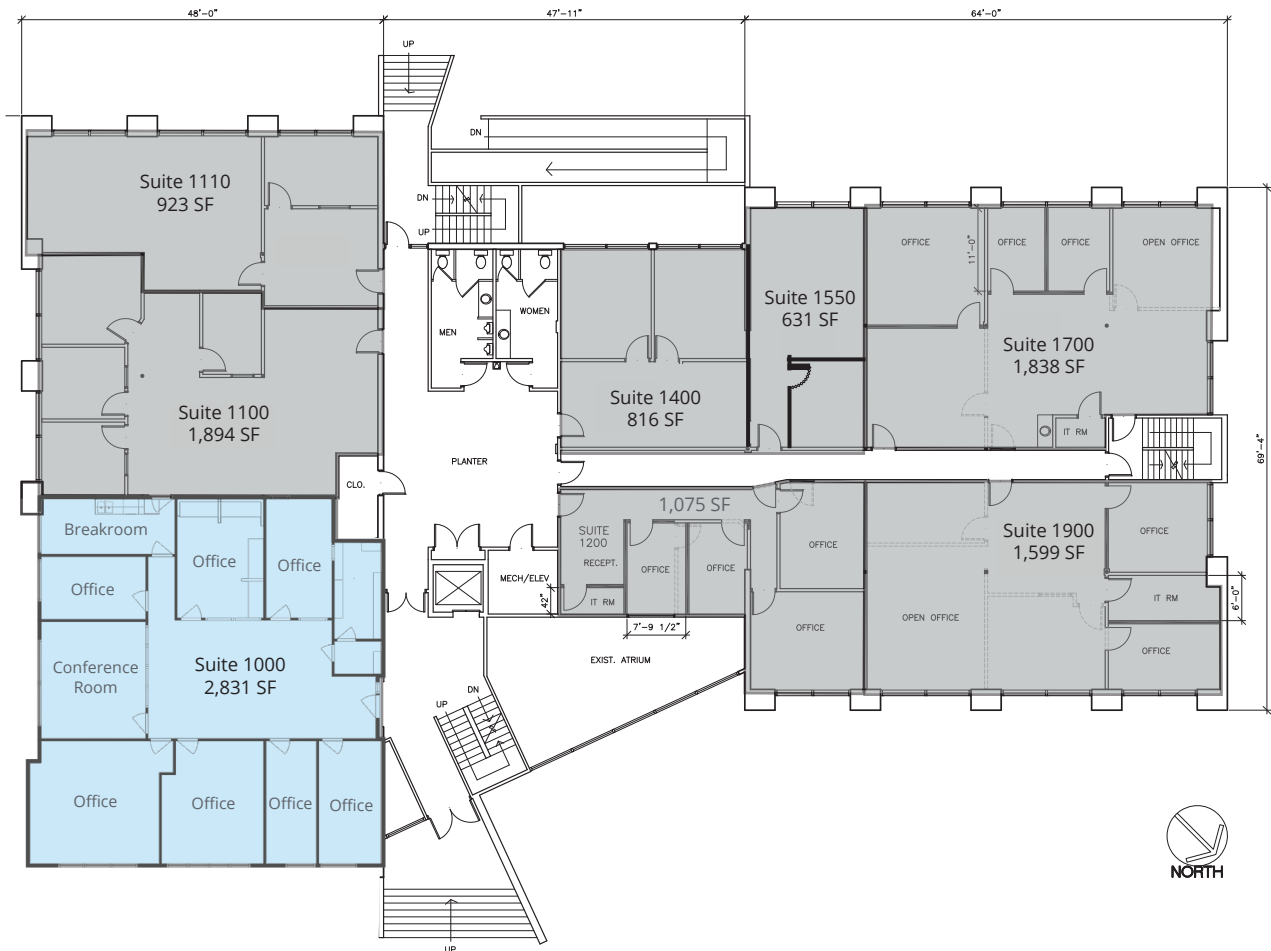
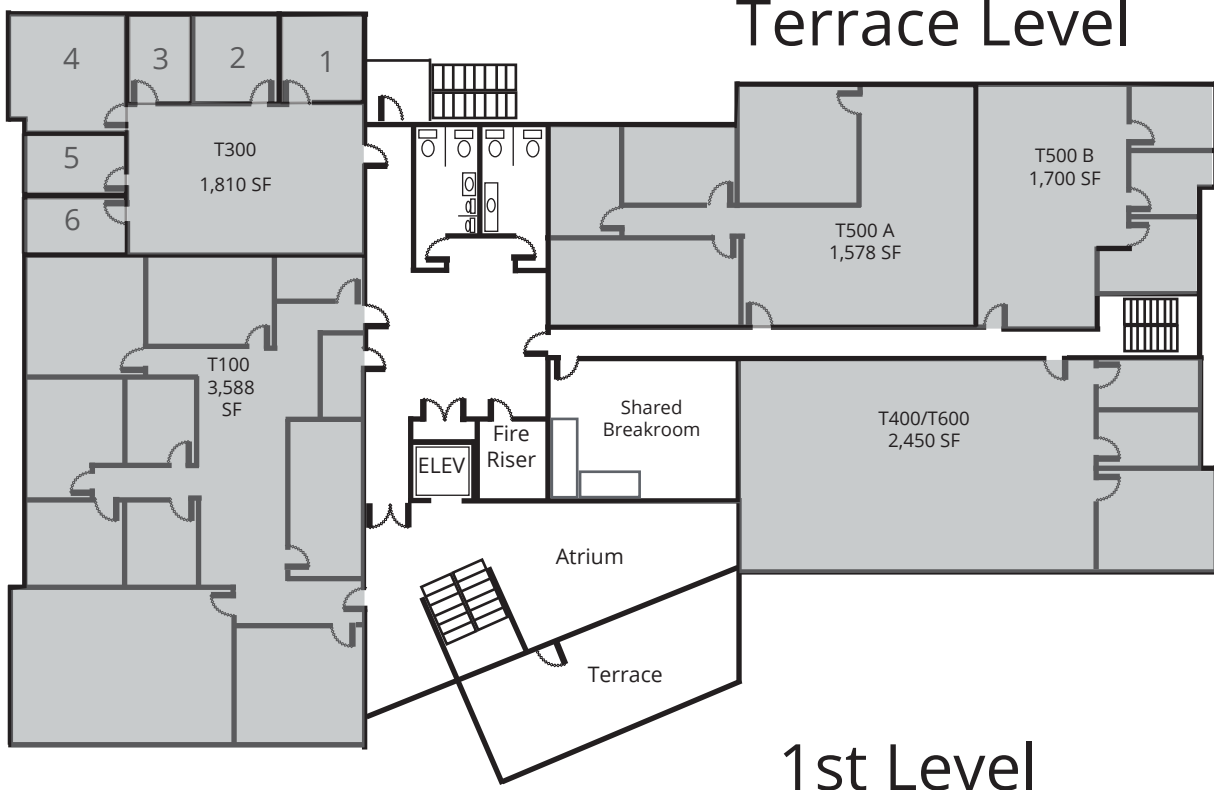
Colliers International

2100 Pleasant Grove Blvd, Suite 200
Pleasant Grove, UT 84062
Main: +1 801 610 1300
colliers.com

Floor Plans

Available

Leased

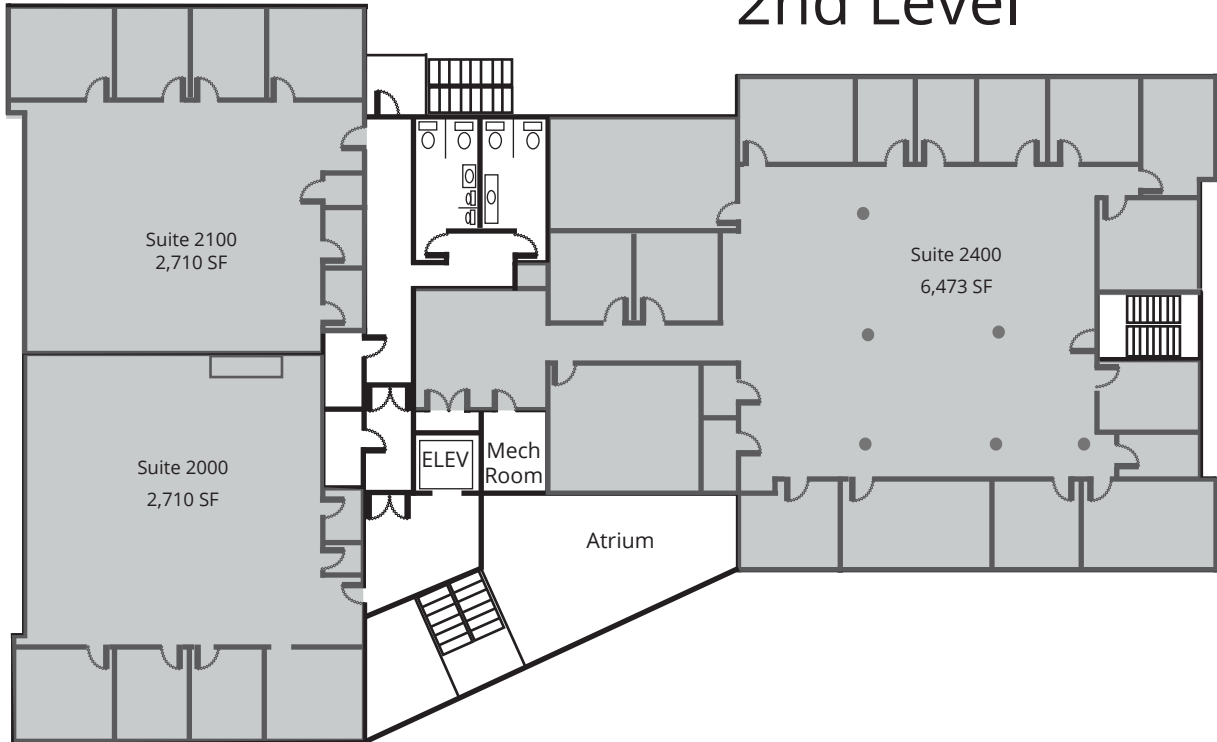


Floor Plans

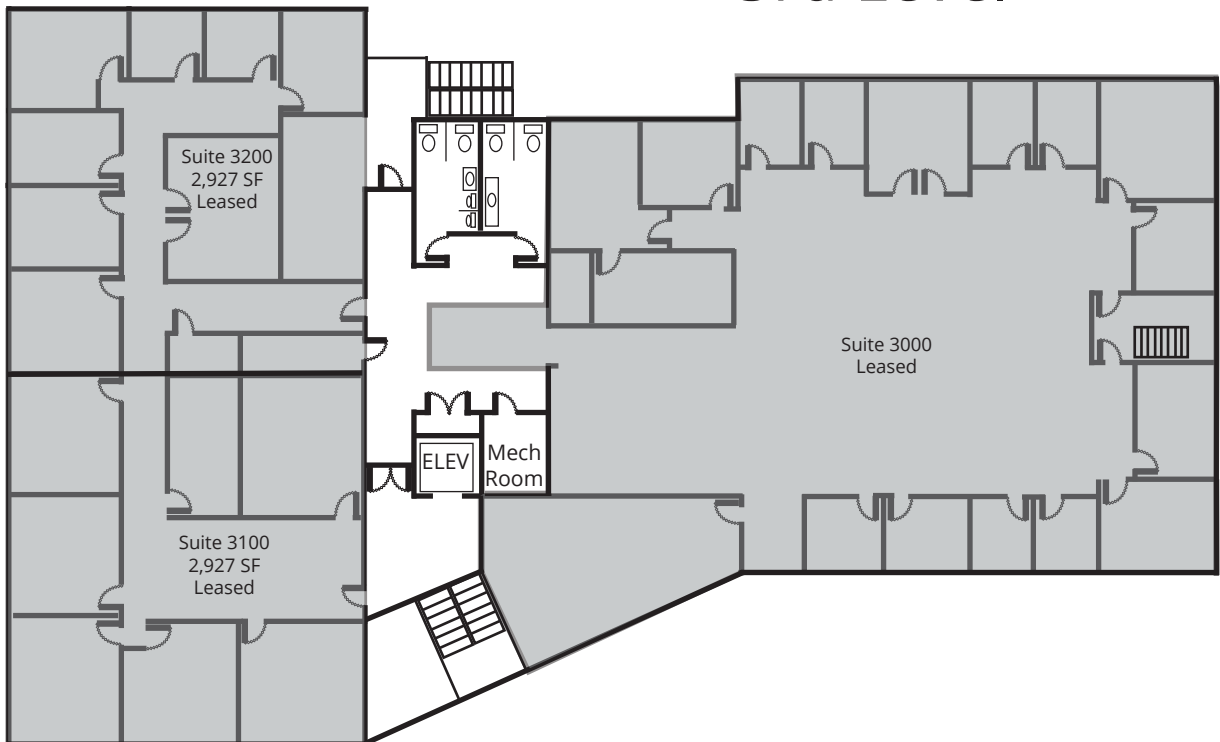
Available

Leased

2nd Level

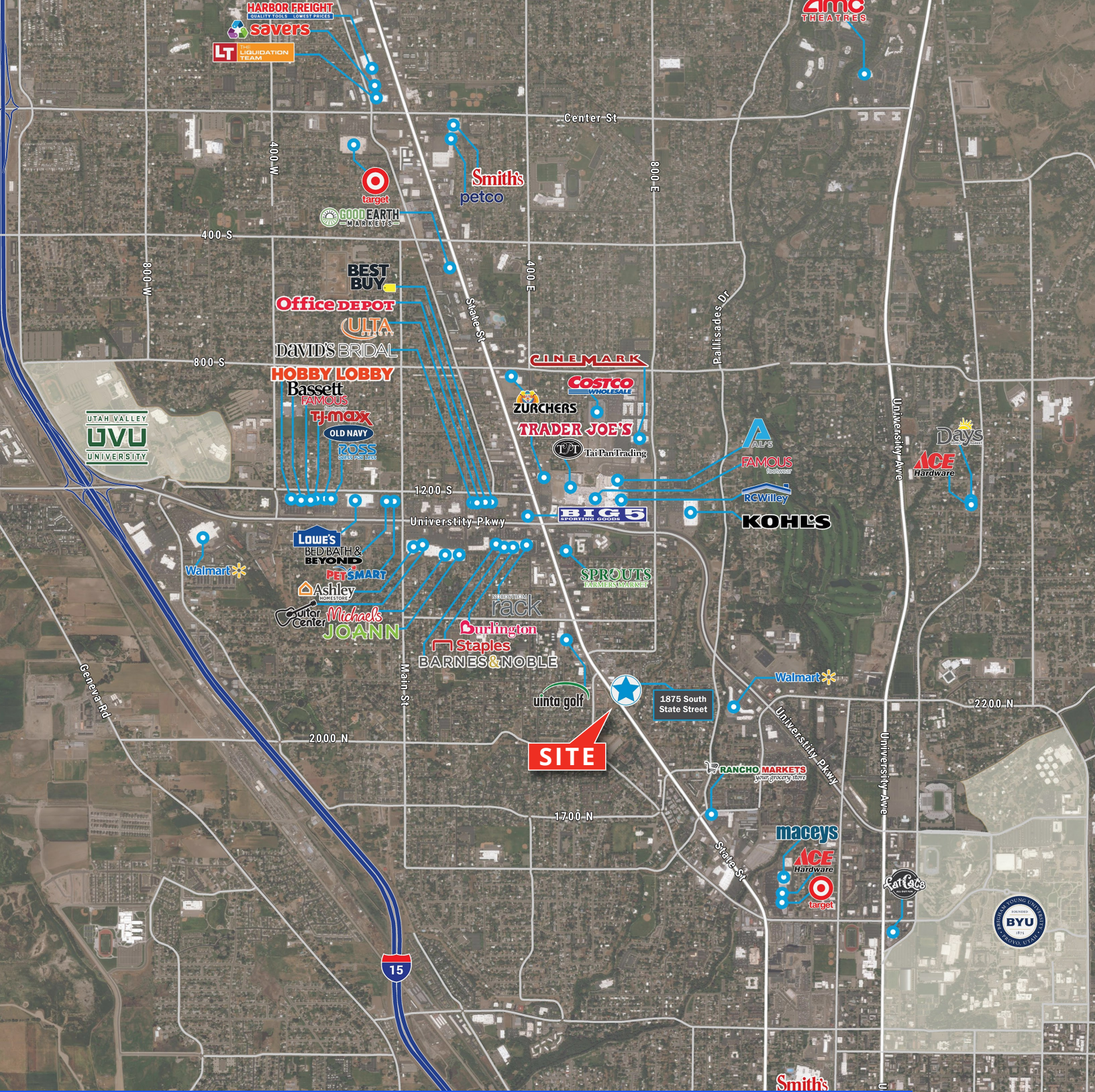


3rd Level



Property Gallery





CONTACT US



Dan Ford - owner/agent
 Senior Vice President
 +1 801 420 0137
 dan.ford@colliers.com



Cody Black - owner/agent
 Summit Commercial Advisors
 +1 801 435 5005
 cody@summitutahcre.com

This document has been prepared by Colliers International for advertising and general information only. Colliers International makes no guarantees, representations or warranties of any kind, expressed or implied, regarding the information including, but not limited to, warranties of content, accuracy and reliability. Any interested party should undertake their own inquiries as to the accuracy of the information. Colliers International excludes unequivocally all inferred or implied terms, conditions and warranties arising out of this document and excludes all liability for loss and damages arising therefrom. This publication is the copyrighted property of Colliers International and/or its licensor(s). ©2026 All rights reserved.