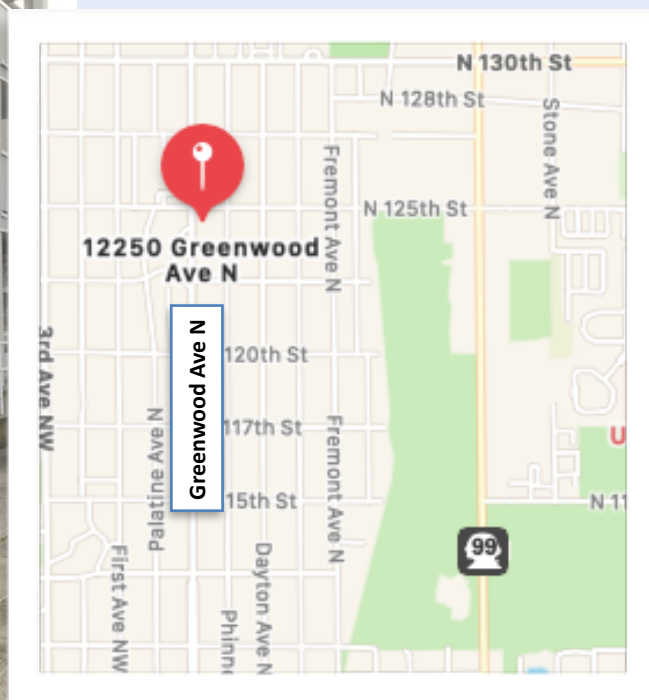


Seattle 98133

FOR LEASE

A photograph of a modern building's entrance. The building has light-colored horizontal siding and a dark grey gabled roof over the entrance area. A white rectangular sign with a black border and the word "Signage" in black text is positioned in the upper center of the image. The entrance features a central orange door flanked by glass windows with dark frames. To the left and right of the entrance are large windows with white frames. A low concrete wall with a green hedge runs along the front of the building. The foreground is a paved sidewalk.



- **18 PARKING STALLS ~6/1,000 RSF**
- **PROMINENT VISIBILITY**
- **EXTERIOR SIGNAGE**
- **NEW HVAC**
- **PROFESSIONAL MANAGEMENT**
- **FIRST CLASS FINISHES**
- **ON MAJOR BUS ROUTES**
- **\$26/SF/YR + NNN**

Suite 100 2,673 RSF
Available Now

- Office - Retail - Medical
- 4 offices/meeting rooms
- Built-in reception
- Waiting Area
- Open work areas
- Kitchenette
- Private restrooms
- Natural light

All square footage references are approximate. The information contained herein is from sources deemed reliable. Prospective Buyer or Tenant should conduct an independent investigation and verification of all matters.

CLARK
CORPORATE REALTY

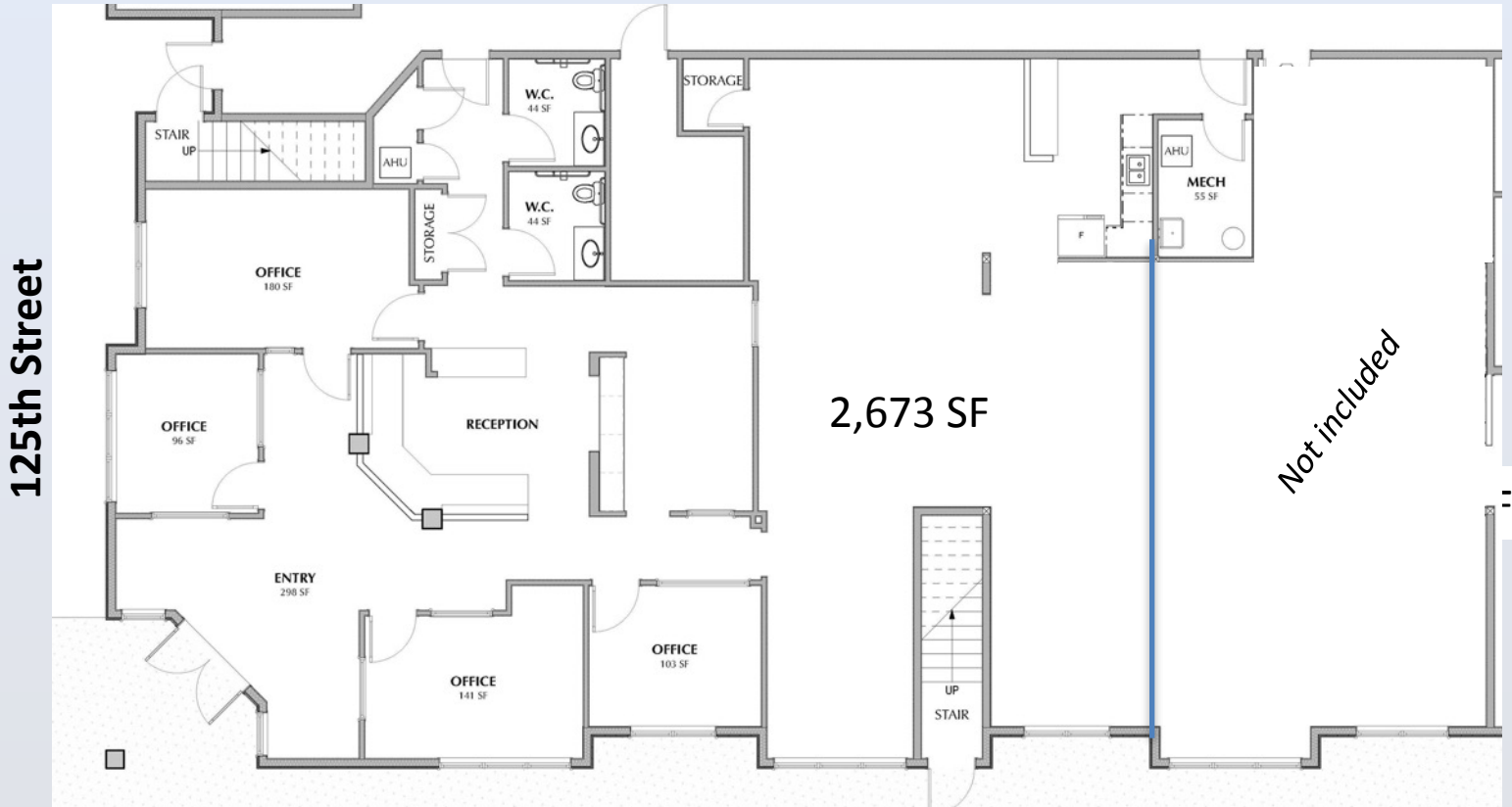
12250 Greenwood Ave N

Seattle 98133

OFFICE SPACE

FOR LEASE

Floor Plan



- Lobby & reception
- 4 private offices
- Kitchenette
- Large open work areas
- Private restrooms
- Storage closets & built-in cabinets



North

12250 Greenwood Ave N
Seattle 98133

OFFICE SPACE

FOR LEASE

Photos



Lobby



Reception/work area



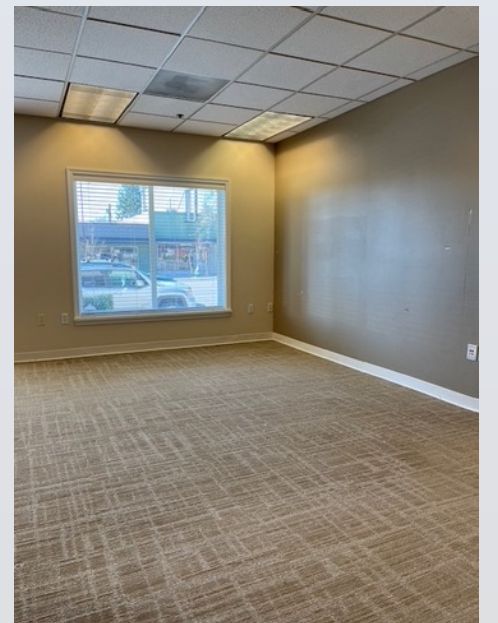
Private office



Private office



Entrance



Open work space