

3,000- 7,500 SF BRAND NEW MEDICAL SPACE FOR LEASE

W HORTON RD, BELLINGHAM, WA 98226



- New Construction
- 3,000-7,500 SF Available
- 2nd Floor Space
- Ownership/ Equity Opportunity Possible
- First Floor Leased to Radiation Oncology and Medical Oncology Physician Groups

\$28/SF/ YR + NNN

GREG MARTINEAU
GAGE COMMERCIAL REAL
ESTATE, LLC.

360.483.0508
GREG@GAGECRE.COM

TRACY CARPENTER
GAGE COMMERCIAL REAL
ESTATE, LLC.

360.303.2608
TRACY@GAGECRE.COM

PROPERTY AERIAL



PROPERTY SUMMARY

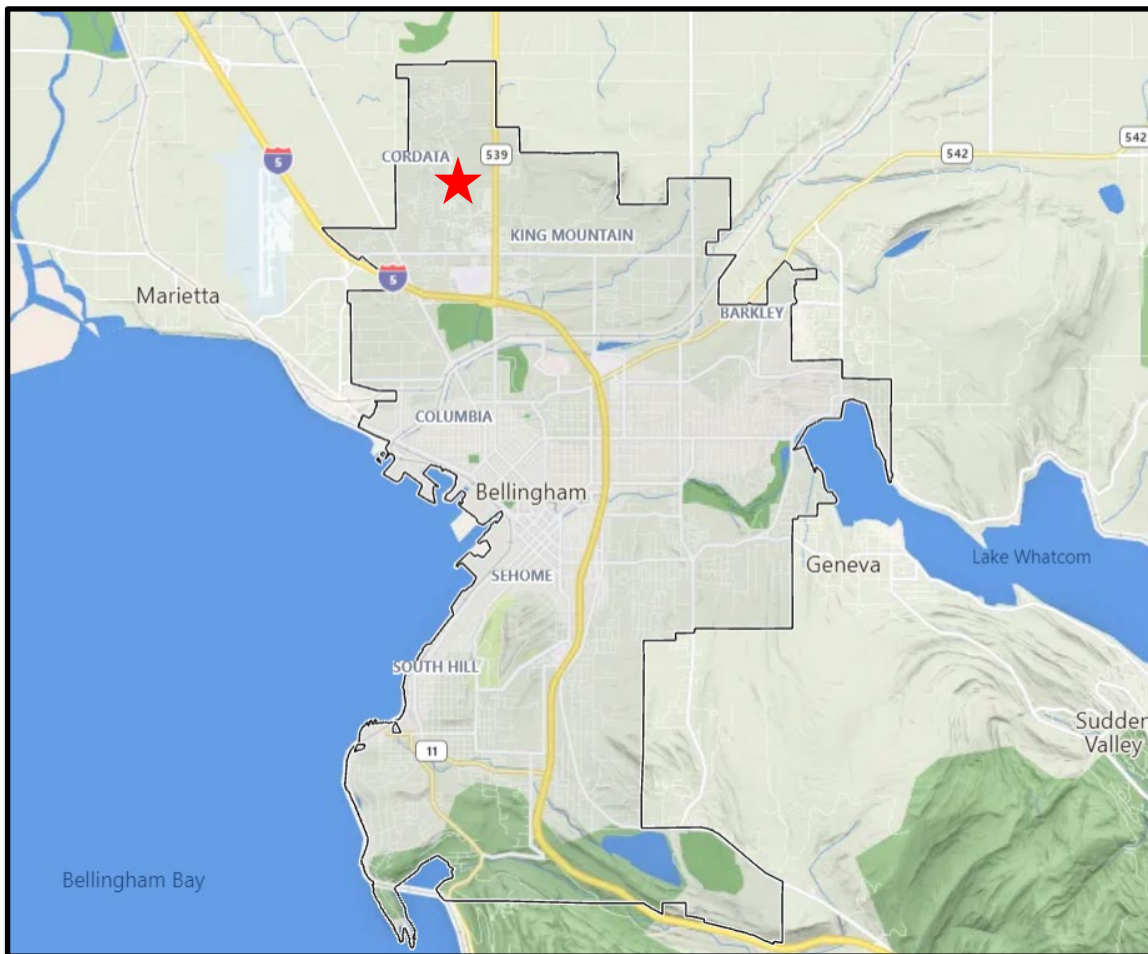
3,000-7,500 SF MEDICAL

381 W HORTON RD

New Construction second floor Medical Space in quickly expanding Cordata Medical District. Space delivered in warm shell condition and ready for tenant improvements. 3,000-7,500 SF second floor space available.

Elevator access to second floor with shared amenities on second floor including bathroom, showers, break/lunchroom and conference room.

Currently Available.



PROPERTY OVERVIEW

Address: 381 W Horton Rd,
Bellingham, WA 98226

Click to view Mappable location

SF Available: 3,000-7,500 SF

Site Area: 1.83 Acres (79,803 SF)

Year Completed: 2022

No. of Floors: 2

Parking: 86 Spaces- 5/1000

Condition: Warm Shell

Price: \$28 / SF / YR + NNN

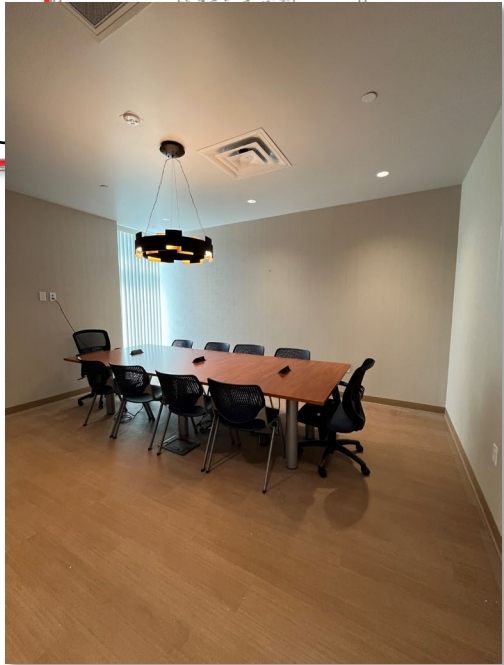
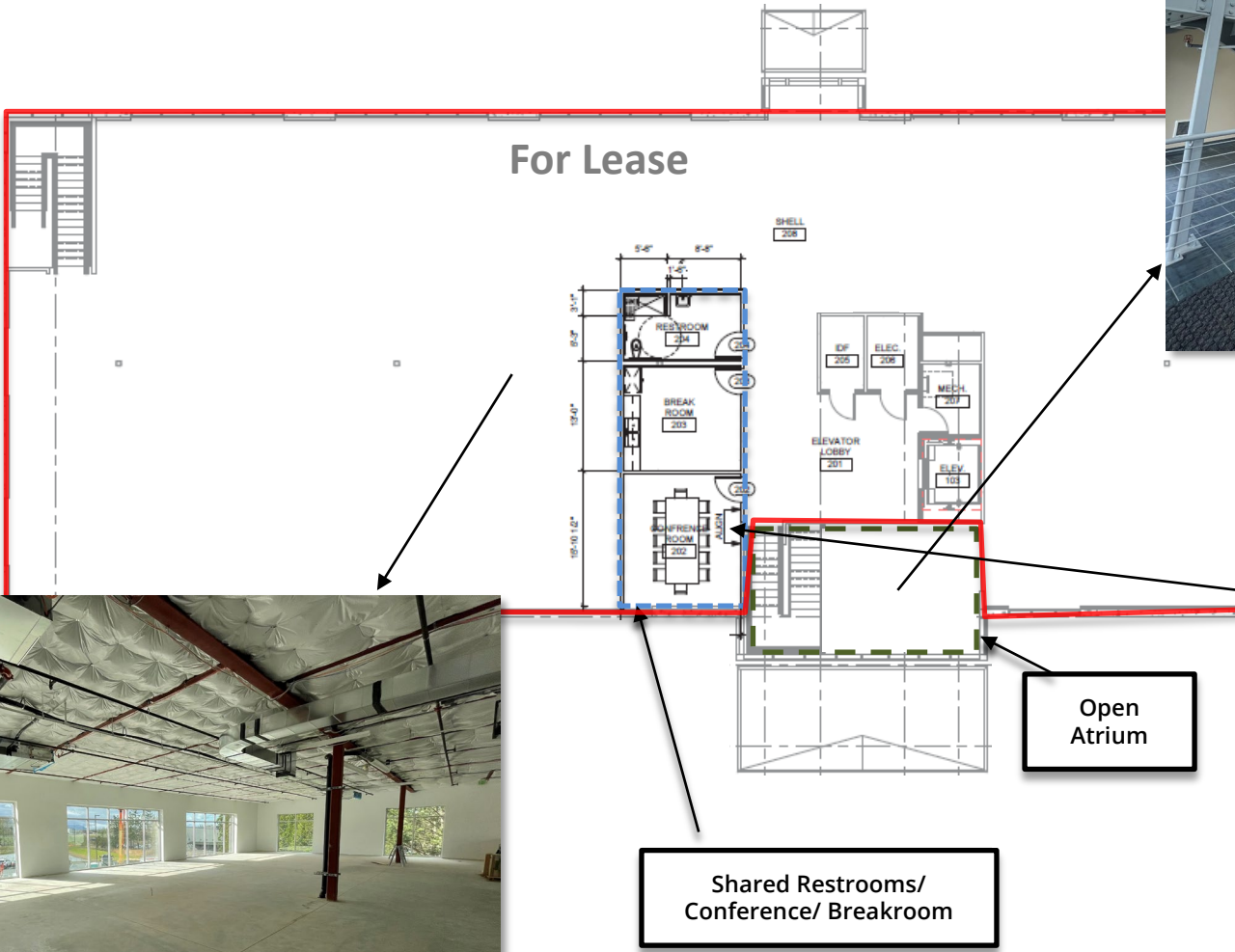
Area: Cordata Medical

Ground Floor Tenant: Leased to
Radiation Oncology and Medical
Oncology Physician
Groups.



FLOOR PLAN- SECOND FLOOR

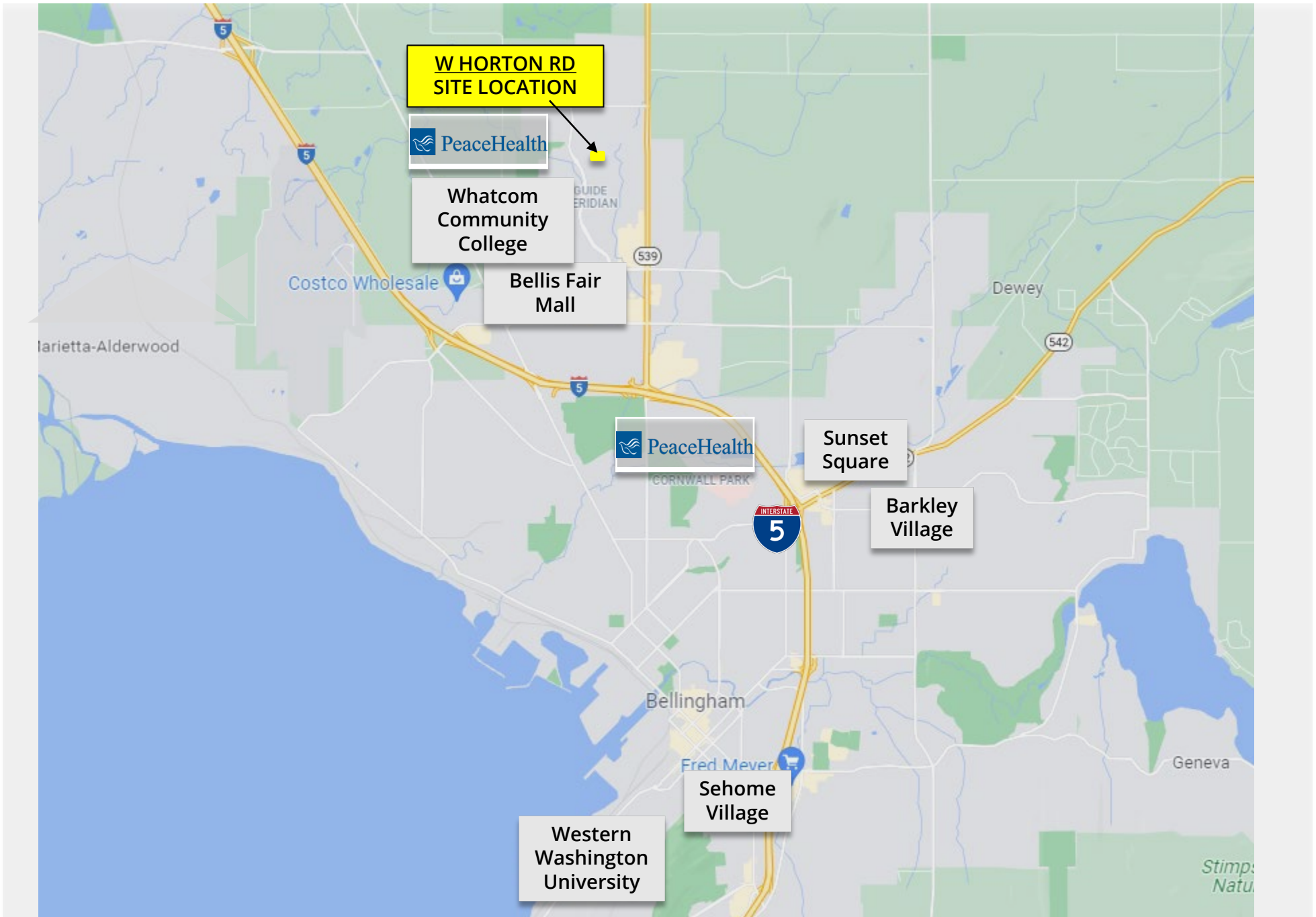
ELEVATOR ADA ACCESSIBLE



SITE PLAN



MAP



PROPERTY PHOTOS



PROPERTY PHOTOS



PROPERTY PHOTOS

[Video Walkthrough- Click Here](#)





FOR MORE INFORMATION

PLEASE CONTACT:

TRACY CARPENTER

GAGE COMMERCIAL REAL ESTATE, LLC.

BROKER/OWNER

360.303.2608

TRACY@GAGECRE.COM

GREG MARTINEAU

GAGE COMMERCIAL REAL ESTATE, LLC.

BROKER/OWNER

360.820.4645

GREG@GAGECRE.COM