

NOBLE APPLIANCE

For Sublease | 19,540 SF Retail

Noble Appliance • Property Highlights

830 28th Street SW | Wyoming, MI

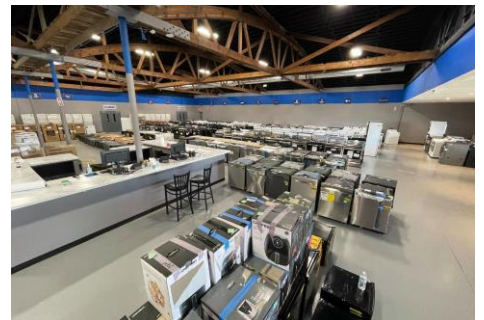
- 19,540 SF Retail Building for Sublease
- 4,000 – 19,540 SF Available through Dec 31, 2031
- Renovations Include a New Roof, New HVAC Units, and a New Façade
- 63 Parking Spaces On-Site
- Sublease Rate: \$9.00/SF Modified Gross
- Noble Appliance is Current Tenant and will Cohabitate or Lease Entire Property



Michael Koenigbauer
Mobile | 248 770 1362
michael.koenigbauer@colliers.com

Property Photos

For Sublease | 19,540 SF Retail
830 28th Street SW | Wyoming, MI



TRAFFIC COUNTS

INTERSECTION	CARS PER DAY
Clyde Park Ave SW/Canterbury St SW S	13,755
Clyde Park Ave SW/28th St SW S	13,337
28h St SW/Longstreet Ave SW W	32,742
28th St SW/Tennyson Dr SW W	29,940

DEMOGRAPHICS

	1 MILE	3 MILES	5 MILES
Total Population	14,950	114,168	279,172
Total Households	5,407	42,023	109,555
Average HH Income	\$51,948	\$55,954	\$67,210

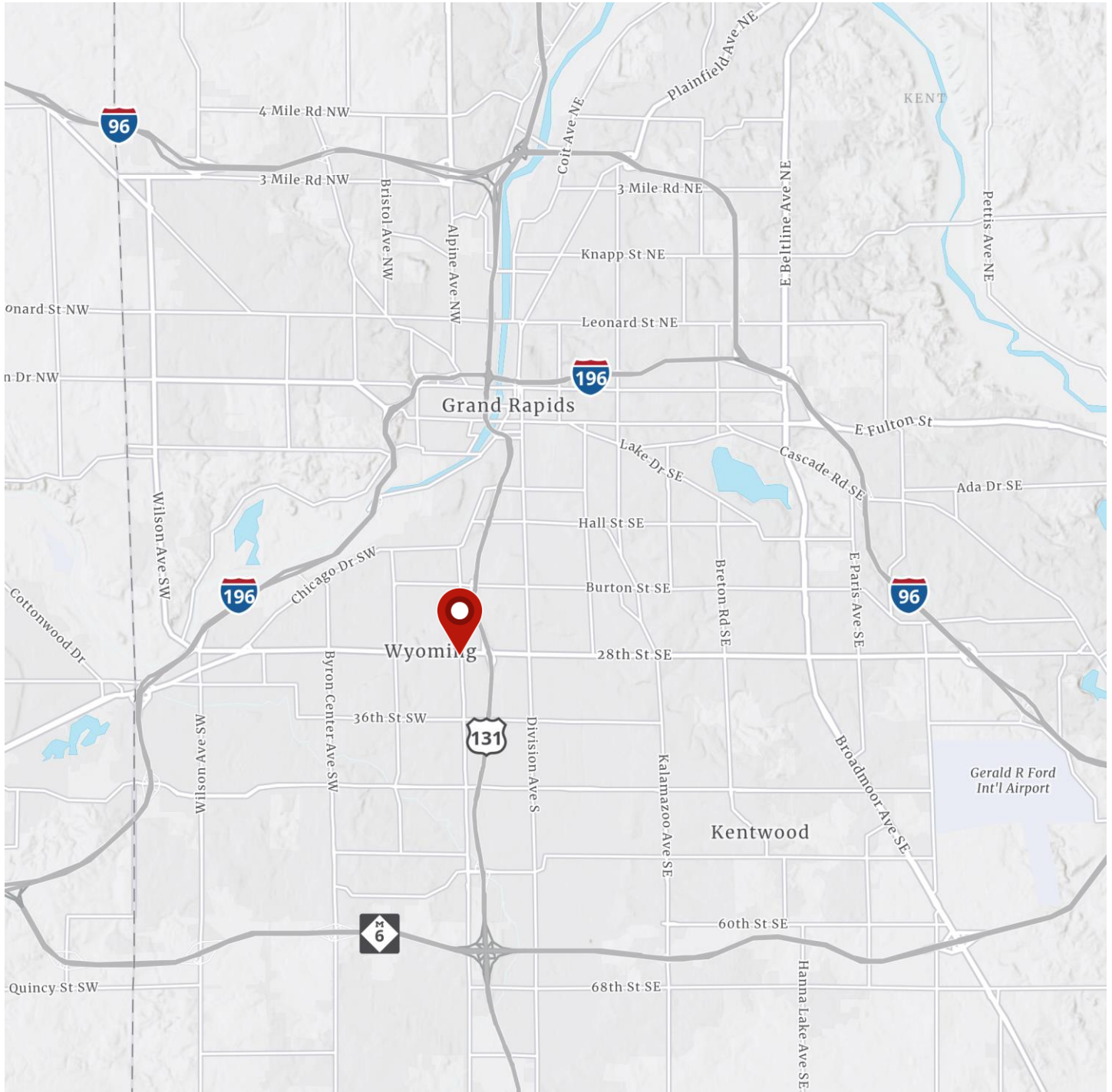
Aerial

For Sublease | 19,540 SF Retail
830 28th Street SW | Wyoming, MI



Location Map

For Sublease | 19,540 SF Retail
830 28th Street SW | Wyoming, MI



Michael Koenigbauer
Mobile | 248 770 1362
michael.koenigbauer@colliers.com

