



36801 Minneola Rd

36801 Minneola Rd, Yermo, CA 92398



Vlad Okel

Capital Group Realty

5941 San Juan Ave, Suite 12B, Citrus Heights, CA 95610

info@capitalgrouprealty.net

(916) 715-2089



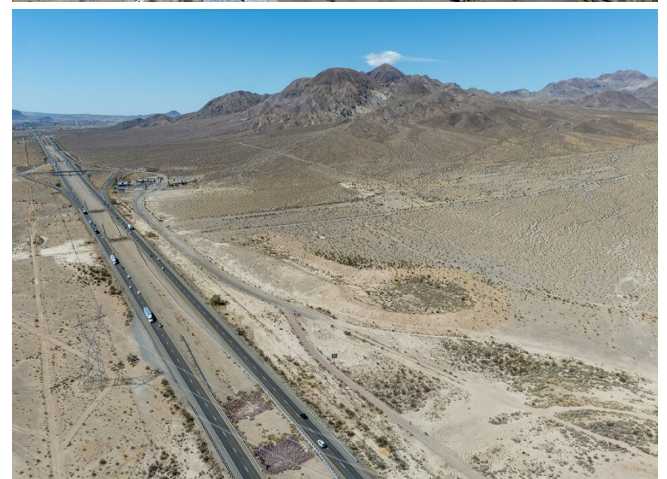
36801 Minneola Rd

\$2,100,000

Introducing 36801 Minneola Rd, a vast 74.8-acre property perfectly positioned in the heart of the Mojave Desert, offering immense potential for developers, investors, and visionaries alike. Located just minutes from the I-15 freeway, this prime location is ideal for various commercial and residential ventures, including the exciting possibility of a truck stop development to serve the steady flow of traffic between Los Angeles and Las Vegas.

This expansive property offers unobstructed desert and mountain views, with ample space to accommodate a variety of projects. Its close proximity to Barstow, Yermo, and the iconic Route 66 ensures easy access to both local amenities and major transport routes.

- 74.8 acres of versatile, flat land
- Strategic location near I-15, perfect for truck stop development or other commercial uses
- Panoramic desert and mountain views
- Endless possibilities for residential, commercial, or recreational use
- Potential for solar power or off-grid living



Price: \$2,100,000

Property Type: Land

Property Subtype: Commercial

Proposed Use: Commercial

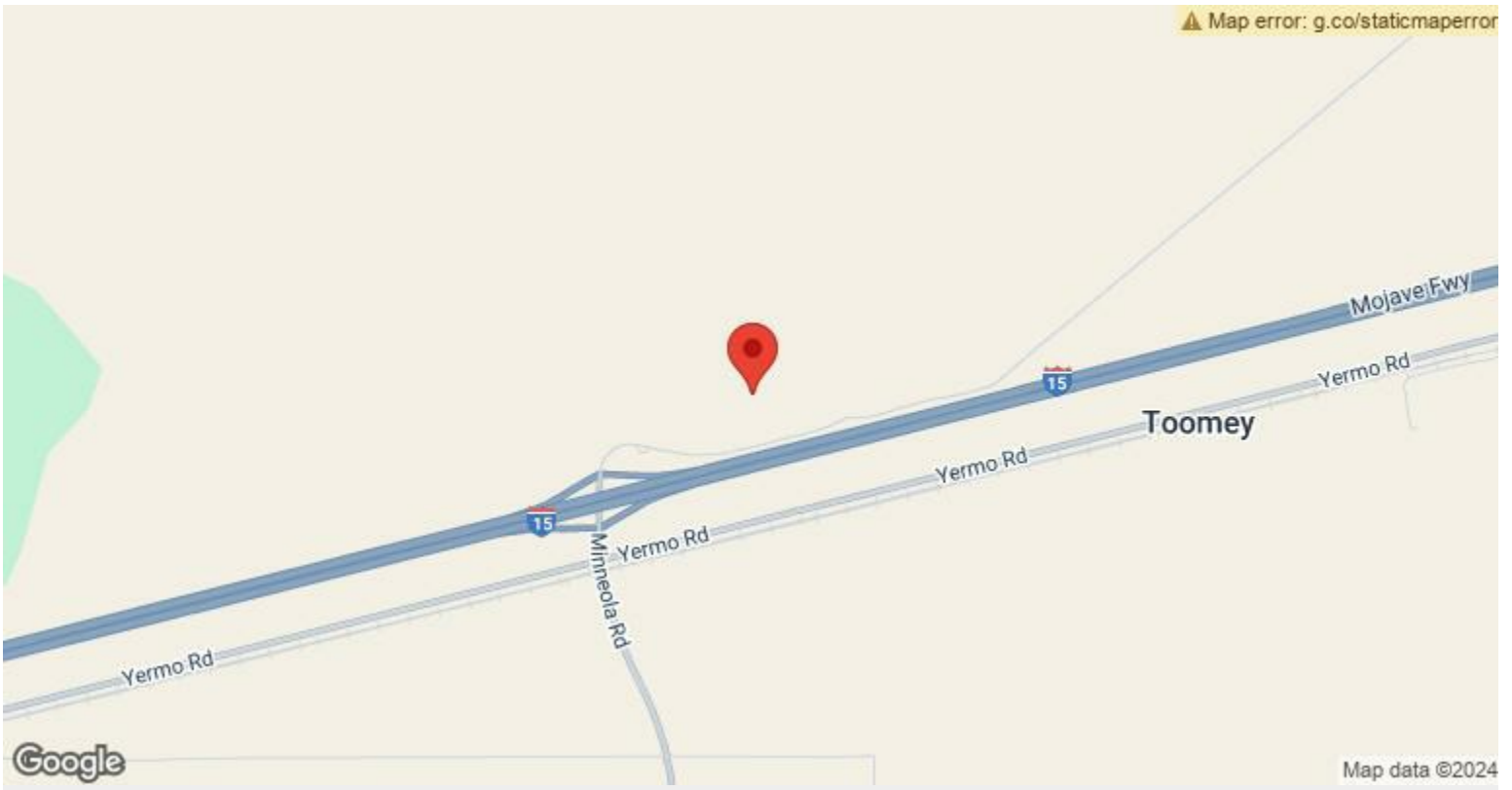
Sale Type: Investment

Total Lot Size: 74.80 AC

No. Lots: 1

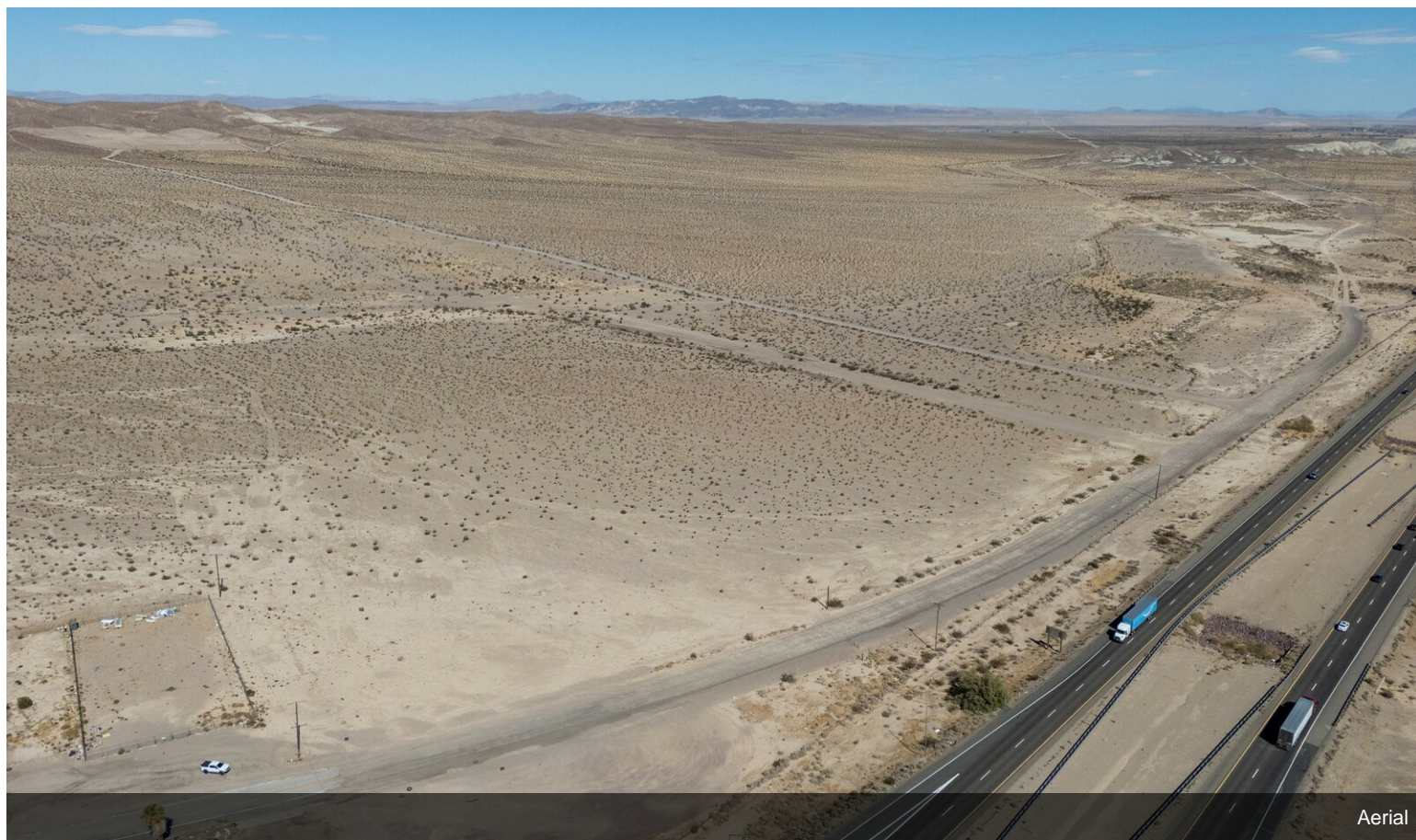
Zoning Description: RC

APN / Parcel ID: 0538-191-34



36801 Minneola Rd, Yermo, CA 92398

Property Photos



Property Photos



Aerial



Aerial

Property Photos



Aerial

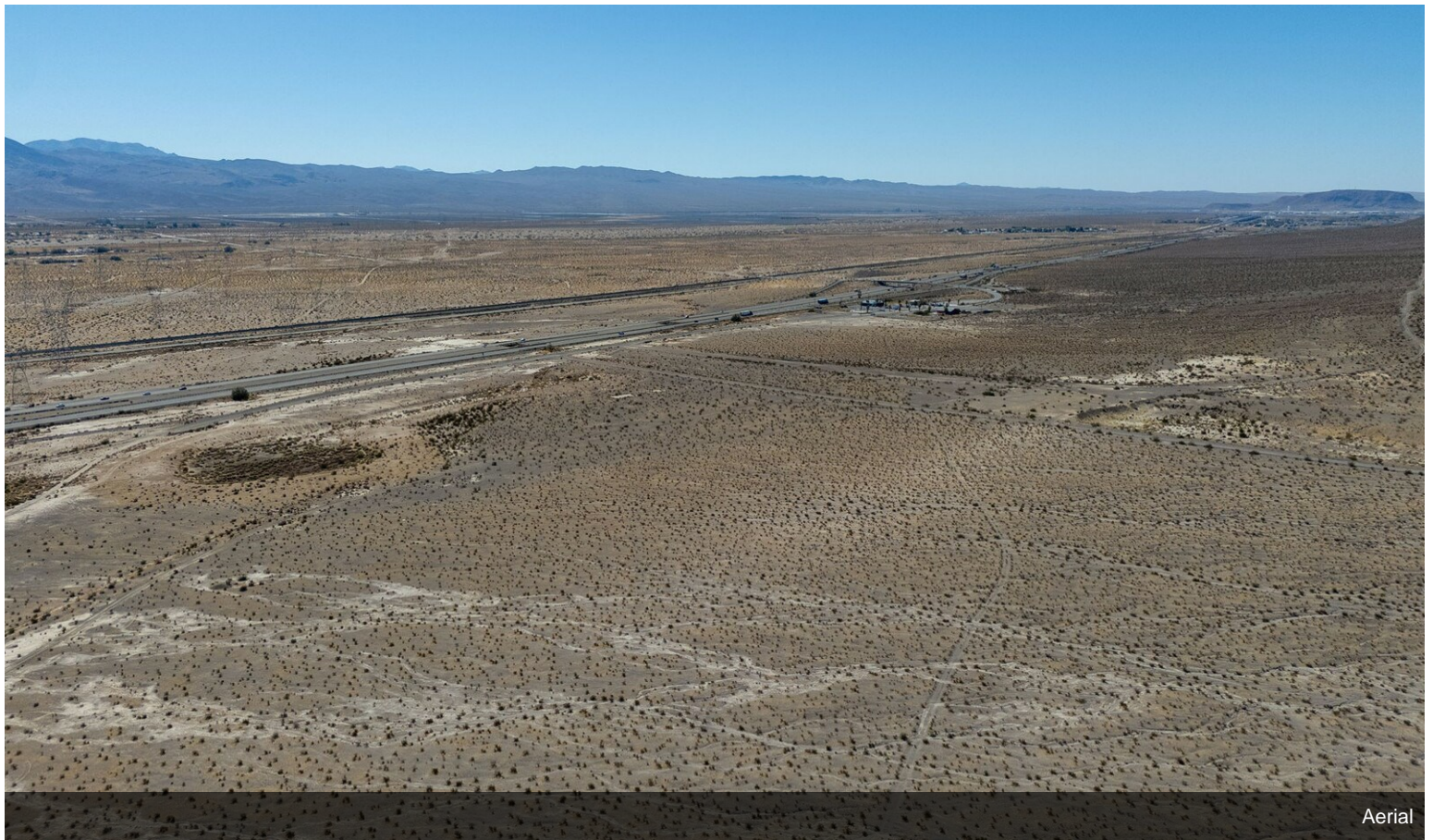


Aerial

Property Photos



Aerial



Aerial

Property Photos



Aerial



Aerial

Property Photos



Aerial



Aerial

Property Photos

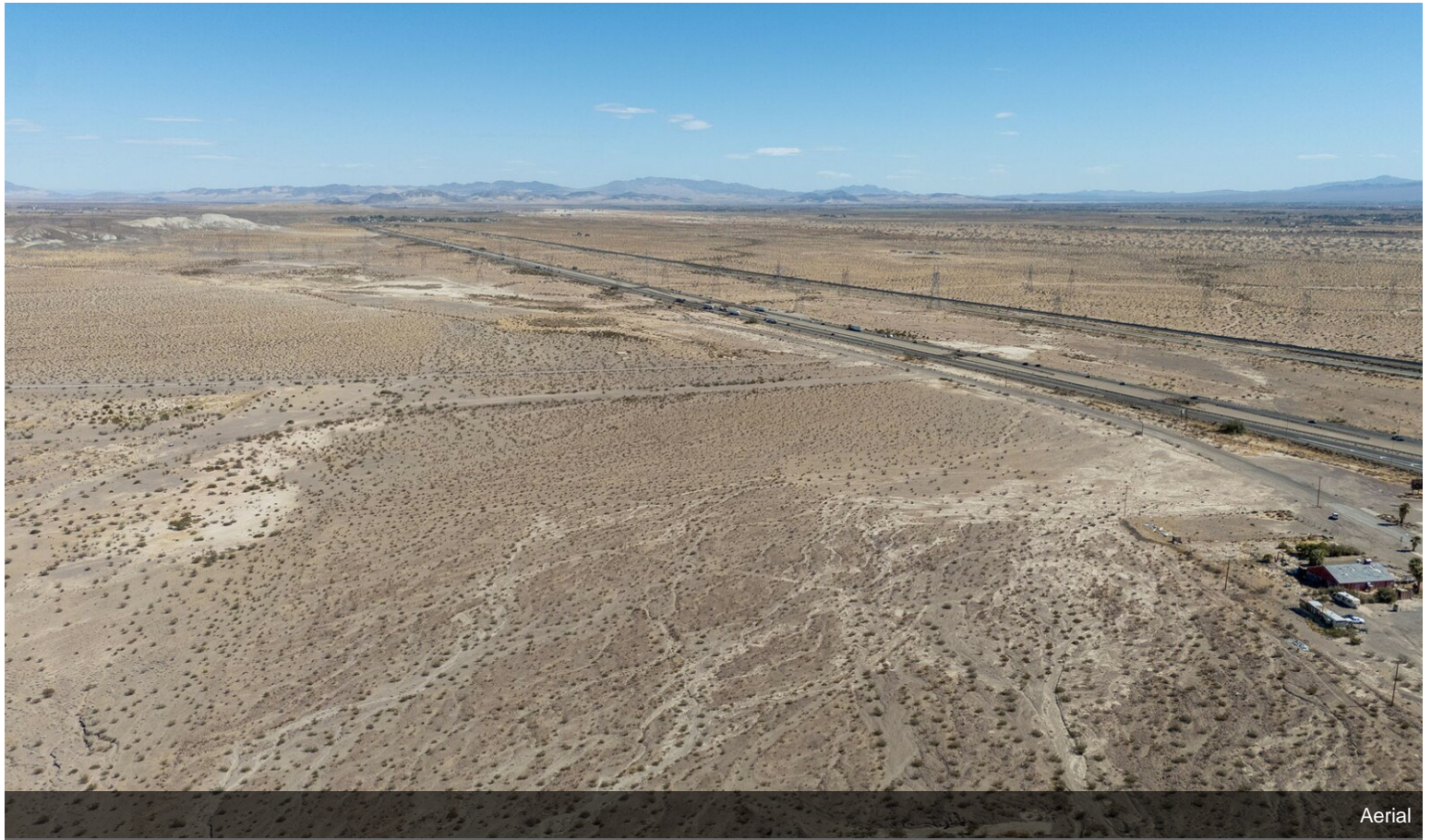


Aerial

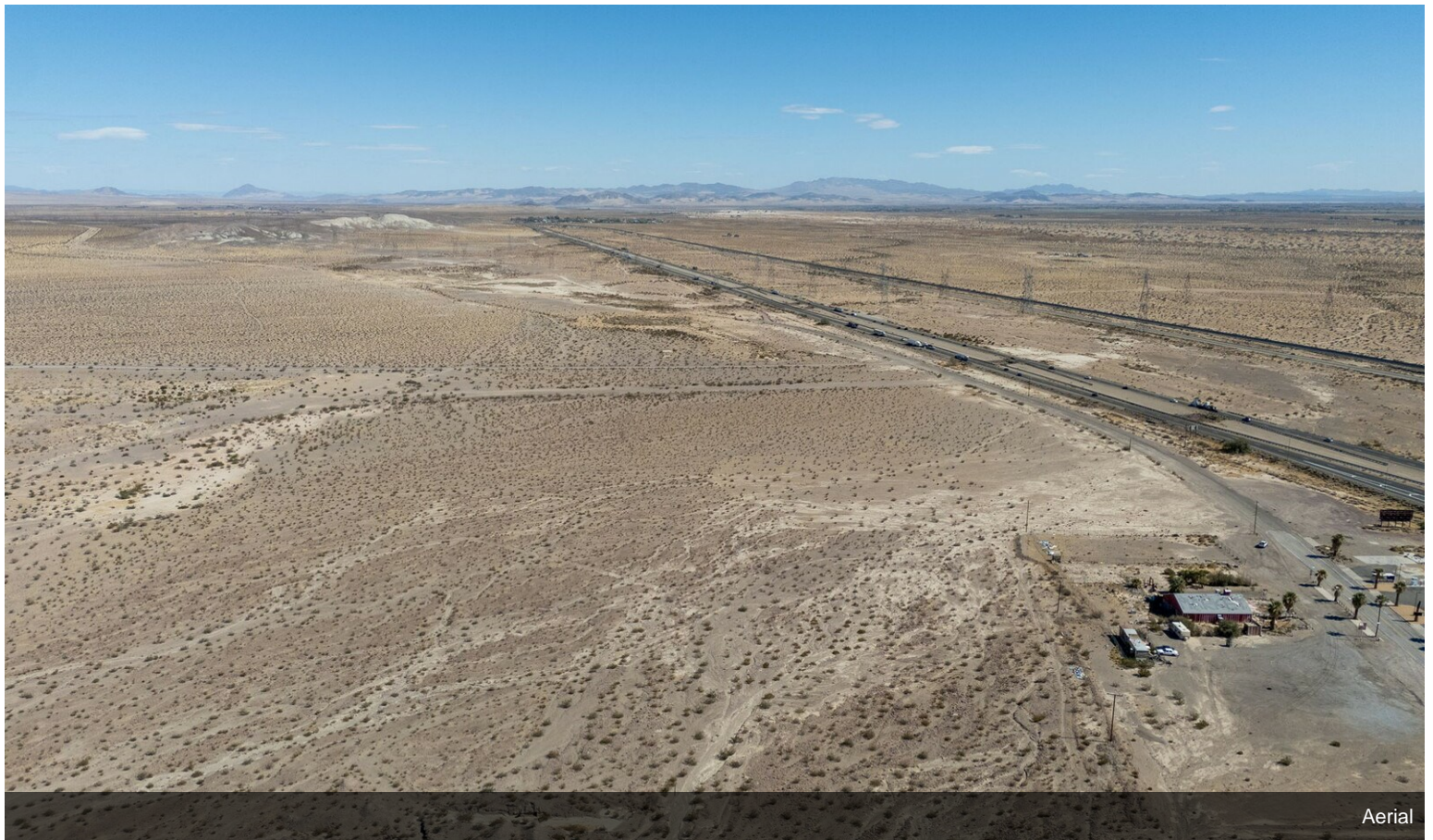


Aerial

Property Photos



Aerial



Aerial

Property Photos



Aerial



Aerial

Property Photos

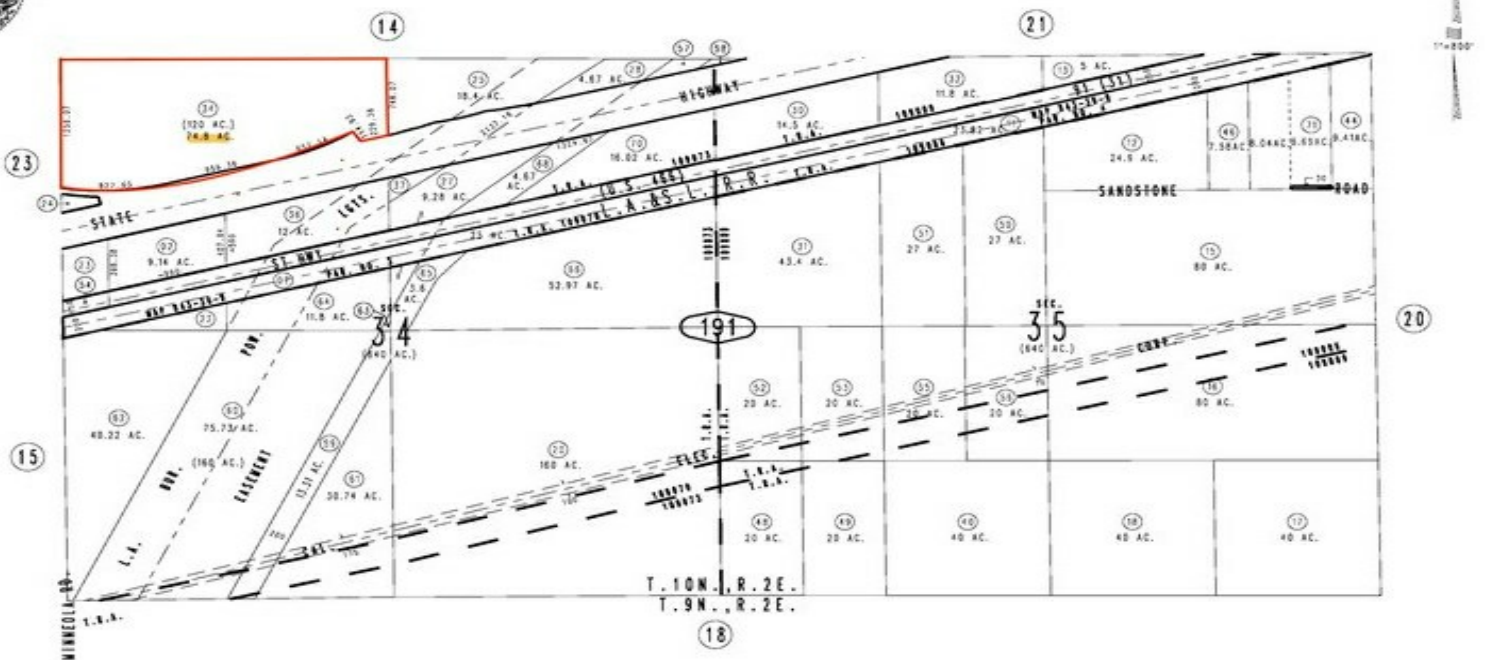


Aerial

5' FOR THE PURPOSES
OF THIS TAXATION ONLY.

Sec.34&35, T.10N.,R.2E., S.B.B.&M.

Silver Valley Unified 0538-19
Tax Rate Area
109006,109009
109070,109073



Scale
1"=500'