



# RETAIL OPPORTUNITY

3,975 SF + 1,000 SF BSMT

**665 MARKET STREET**  
SAN FRANCISCO | CA

**maven**  
RETAIL • OFFICE • INDUSTRIAL



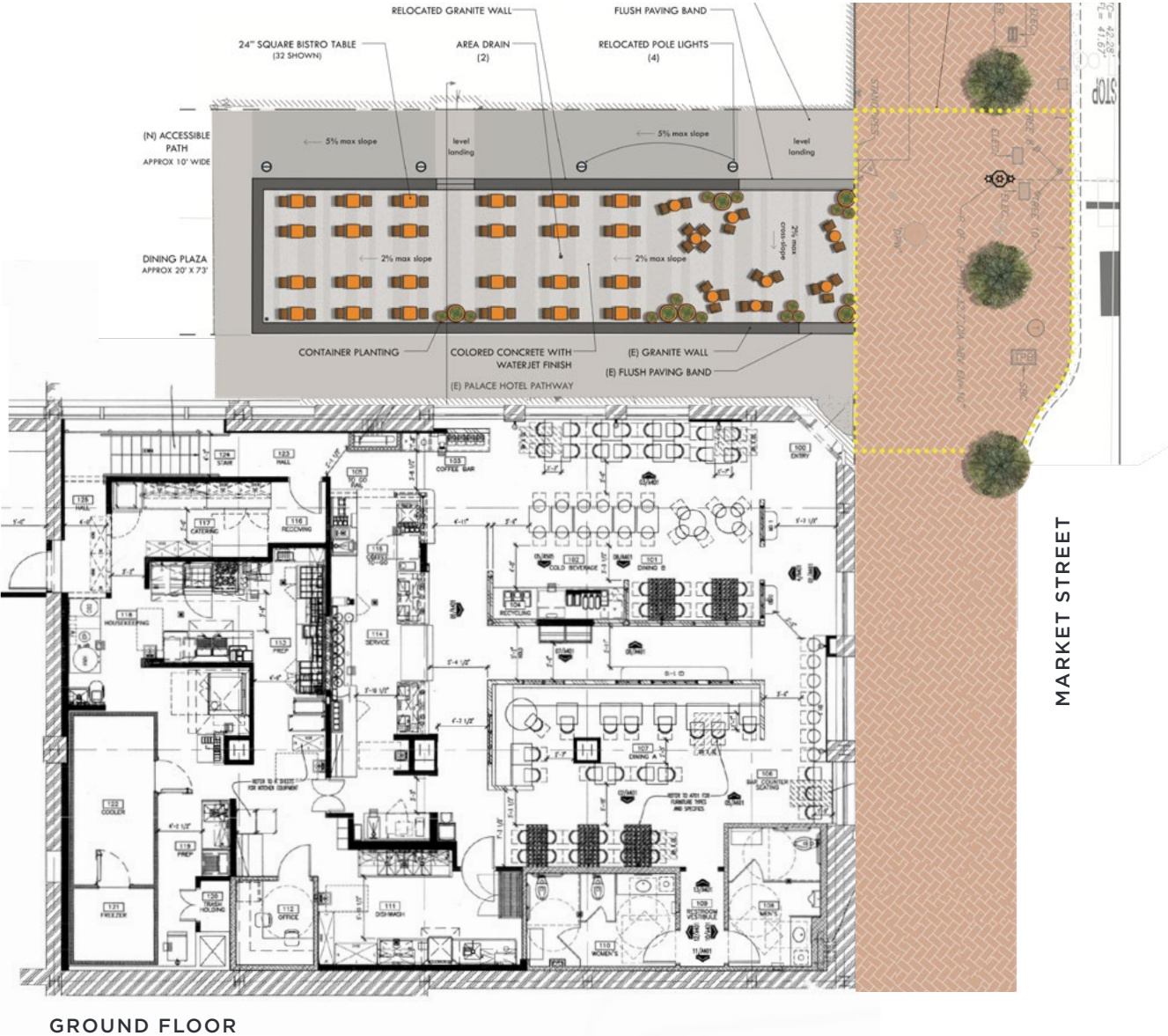
# FEATURES



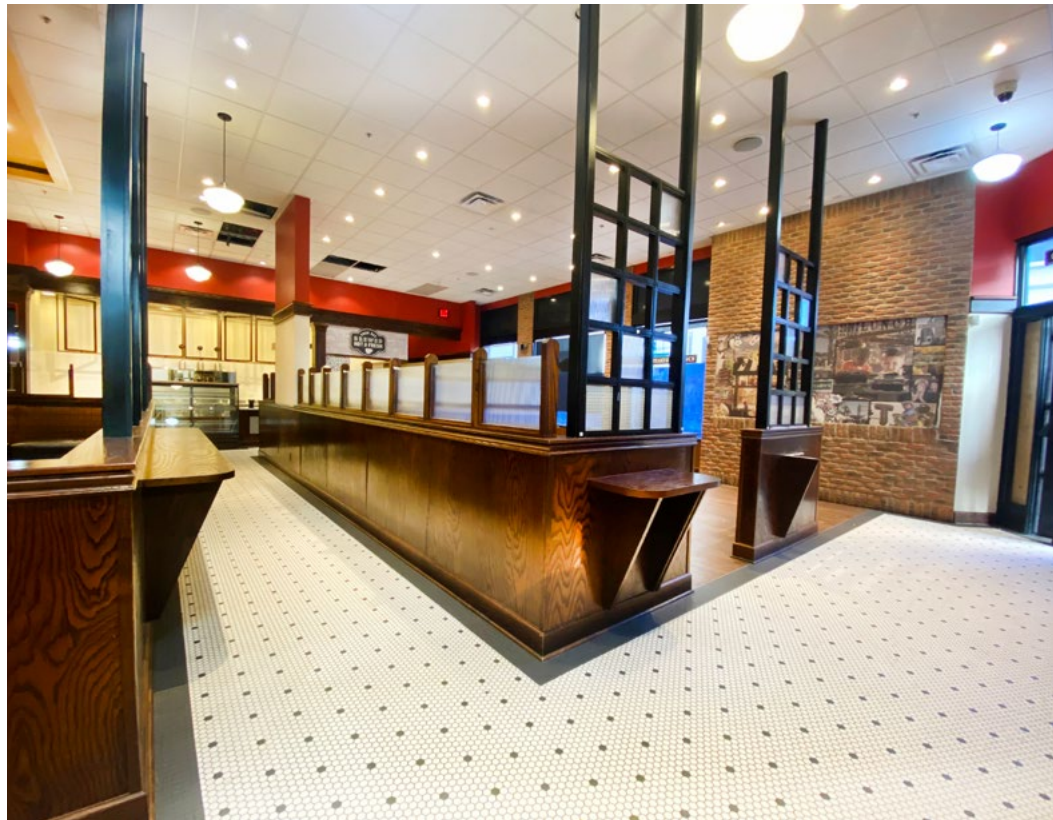
- 3,975 SF + 1,000 SF Basement
- Outdoor seating potential
- Restaurant infrastructure in place
- Type I Hood
- Located in the highly renown Palace Hotel
- Steps away from Union Square and Market Street shops, restaurants, public transportation, parking, and more

Newly fully remodeled cafe with venting, on busy Market street, located at the Palace hotel. The space benefits from 3,975 SF of ground floor area and, has the potential for outdoor dining. It is surrounded by office buildings and the Ritz residence - and just steps away from Union Square. Ownership would love a fast casual, counter service restaurant and a long term lease.

# FLOOR PLAN











# 665 MARKET ST

**665 MARKET** is located in the historic Palace Hotel, one of the city’s oldest and most iconic hotels. Steps from San Francisco’s Union Square shopping district, this stunning hotel is known for its grand architecture, opulent interiors, and luxurious amenities, including the famous Garden Court and Pied Piper Bar.



FOUR SEASONS



HERMES



FENDI



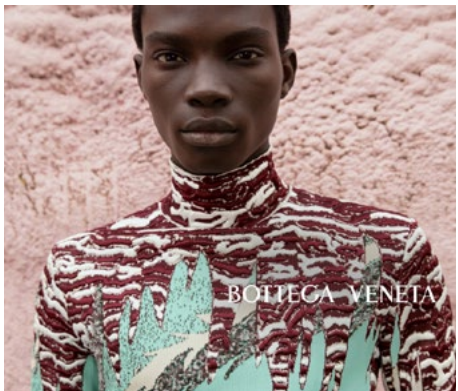
YSL



HYATT REGENCY



GOYARD



BOTTEGA VENETA



BRUNELLO CUCINELLI

# UNION SQUARE

San Francisco’s Union Square retail district is one of the most coveted retail destinations in the United States. Known for its vibrant entertainment, shopping & dining culture, Union Square is brimming with the city’s finest specialty stores, art galleries, designer boutiques, and many well-known, national retailers.



## TOURISM



## RESIDENTIAL/OFFICE



# 25+ Million

Visitors annually

60%

of San Francisco's hotels  
are within 5-minute walk

40%

Retail sales are accounted by  
1/3 of all visitors

\$10.7B

Were the annual amount spent by visitors and tourists in San Francisco

90.6%

### Average hotel Occupancy

\$276

Average daily hotel rate

4,729,484

San Francisco Metropolitan  
Area population

\$149,589

Average resident HH  
income

70+

Events are hosted annually  
near Mid-Market

727,701

Total daytime  
employees (3 miles)

41,757

Total business establishments (3 miles)

12,000

## New residential units between Mid-Market and Van Ness

158,000

Average daily BART riders

## 20 Minutes

from Montgomery station

327,269

Average riders from  
Montgomery station





**maven**  
RETAIL • OFFICE • INDUSTRIAL

# 665 MARKET ST

- FOR LEASE -

**ALI  
MCEVOY**

415.404.7343

[ali@mavenproperties.com](mailto:ali@mavenproperties.com)

DRE #01930635

**PAM  
MENDELSON**

415.404.6650

[pam@mavenproperties.com](mailto:pam@mavenproperties.com)

DRE #00953050

**GLORIA  
NORDBAKK**

415.225.0626

[gloria@mavenproperties.com](mailto:gloria@mavenproperties.com)

DRE #02207407

**SAGE  
MIRSKY**

907.821.1049

[sage@mavenproperties.com](mailto:sage@mavenproperties.com)

DRE #02238781

NOTICE: This information has been secured from sources we believe to be reliable but we make no representations, warranties, express or implied, as to the accuracy of the information. Listing broker has been given enough information to provide only a preliminary interest in the property. The materials are not to be considered fact. The information contained herein is not a substitute for thorough due diligence investigation. References to square footage, zoning, use, or age are approximate. Please contact the San Francisco Planning Department to verify zoning at (415) 558-6378, as neither broker or landlord represent that this space is suitable for your use. Tenant or Buyer must verify the information at their own expense and bears all the risk for any inaccuracies. By receiving these materials you are agreeing to the disclaimers set forth herein. DRE#01878802