



STORMVILLE AIRPORT / FLEA MARKET

416-428 NYS ROUTE 216, EAST FISHKILL, NY 12582



FLEA MARKET / FAIRGROUNDS / ENTERTAINMENT VENUE

ADDRESS: 416-428 NYS Route 216
East Fishkill, NY 12582
(Stormville Township)

LOCATION: 2.2 Miles / 3 Minutes to U.S. Route 52
3.3 Miles / 5 Minutes to Taconic State Parkway
4.5 Miles / 6 Minutes to Interstate 84, Exit 52

FRONTAGE: 2,979.3' - NYS Route 216

LOT SIZE: 155 Acres

ASKING PRICE: \$8,950,000



PROPERTY OVERVIEW

CR Properties Group, LLC is pleased to offer For Sale the Stormville Airport / Flea Market used for Flea Markets, Fairgrounds, Entertainment Venue on 416-428 NYS Route 216, East Fishkill, NY 12582 (Stormville Township). This location is 2.2 Miles / 3 Minutes to U.S. Route 52, 3.3 Miles / 5 Minutes to Taconic State Parkway, 4.5 Miles / 6 Minutes to Interstate 84, Exit 52. There are 6 buildings located on this parcel totaling 25,984 SF on 155 Acres of land.

Website: <https://www.stormvilleairportfleamarkets.com/>



CR Properties Group, LLC
295 Main Street
Poughkeepsie, NY 12601
www.crproperties.com



ALL DATA BELIEVED TO BE ACCURATE BUT NOT WARRANTED

For more information:

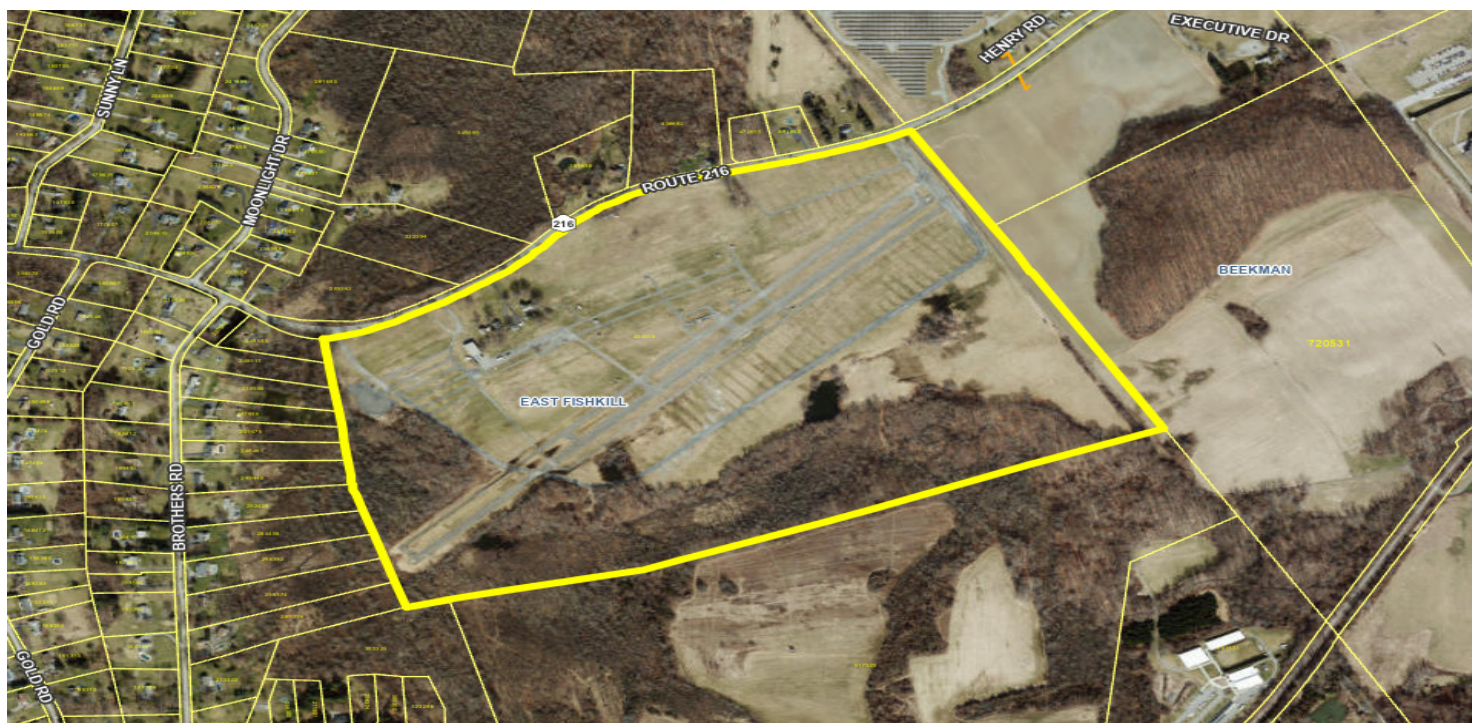
Thomas M. Cervone
845.485.3100
tom@crproperties.com



FAIRGROUNDS / ENTERTAINMENT VENUE

416-428 NYS ROUTE 216, EAST FISHKILL, NY 12582

<https://www.stormvilleairportfleamarkets.com/>



CR Properties Group, LLC
295 Main Street
Poughkeepsie, NY 12601
www.crproperties.com



ALL DATA BELIEVED TO BE ACCURATE BUT NOT WARRANTED

For more information:

Thomas M. Cervone
845.485.3100
tom@crproperties.com



POPULATION	10 MILES	15 MILES	20 MILES
Total Population	134,933	361,176	690,828
Average Age	43	43	42
Average Age (Male)	43	42	41
Average Age (Female)	44	43	43

HOUSEHOLDS & INCOME	10 MILES	15 MILES	20 MILES
Total Households	48,656	135,283	257,101
# of Persons per HH	2.8	2.7	2.7
Average HH Income	\$162,502	\$138,319	\$139,892
Average House Value	\$492,355	\$448,725	\$459,576

Demographics data derived from AlphaMap



ALL DATA BELIEVED TO BE ACCURATE BUT NOT WARRANTED

For more information:

Thomas M. Cervone
845.485.3100
tom@crproperties.com