

Cone Health Alamance  
Regional Hospital

## Premier Medical Office & Professional Development Site | *Build-to-Suit Available*



## Grand Oaks Boulevard Burlington, NC 27215

Moss Withers, SIOR, MBA  
mwithers@lee-associates.com  
O: 919.576.2501

Karah Jennings McConnell  
kjennings@lee-associates.com  
O: 919.576.2502  
C: 919.817.0705

Silas Fortuin  
sfortuin@lee-associates.com  
O: 919.591.2271  
C: 208.316.3718

**LEE & ASSOCIATES**  
COMMERCIAL REAL ESTATE SERVICES  
RALEIGH DURHAM

All information furnished regarding property for sale, rental or financing is from sources deemed reliable, but no warranty or representation is made to the accuracy thereof and same is submitted to errors, omissions, change of price, rental or other conditions prior to sale, lease or financing or withdrawal without notice. No liability of any kind is to be imposed on the broker herein.



# Burlington Medical Office Site

Grand Oaks Boulevard  
Burlington, NC 27215

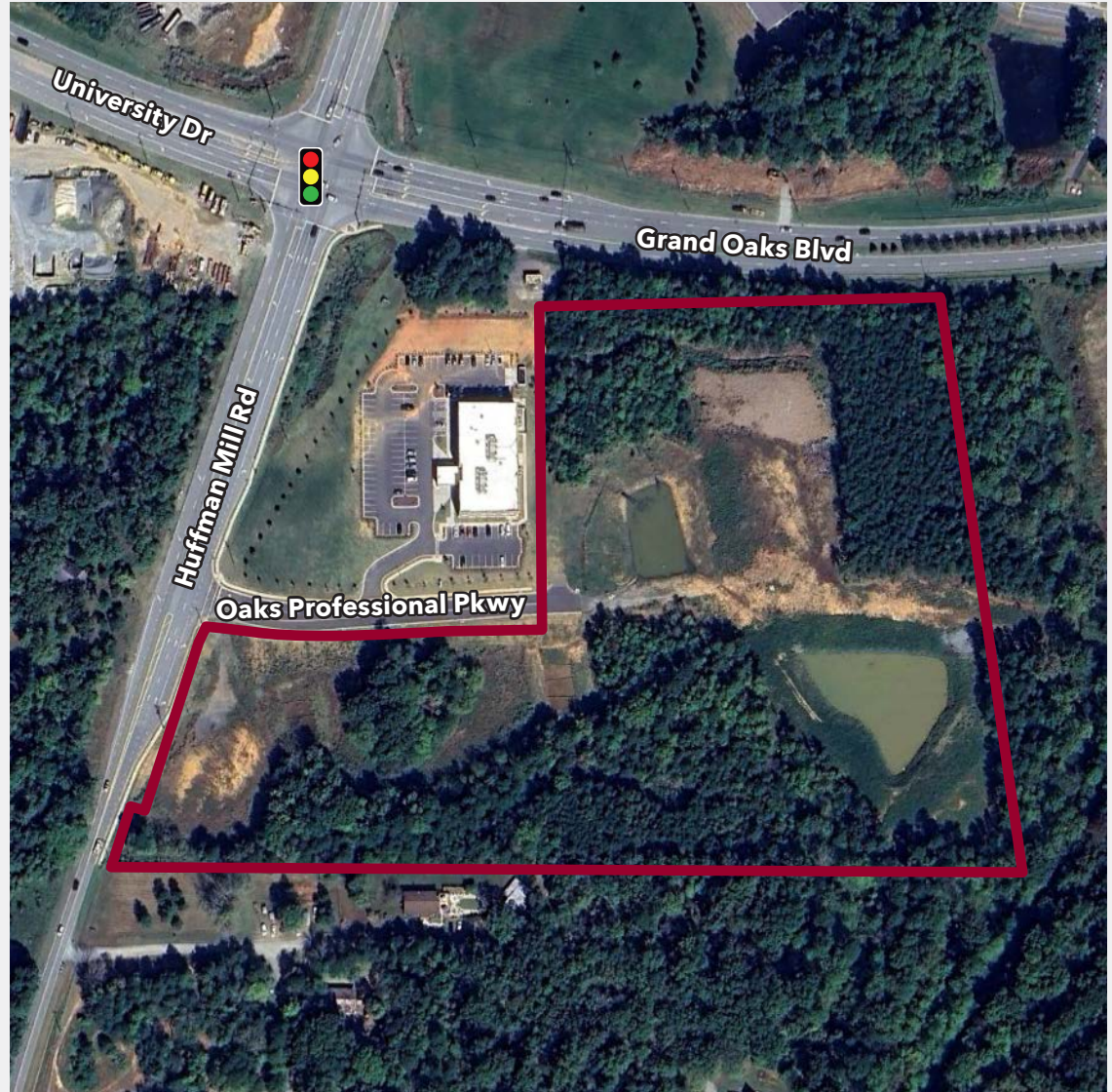
18.94 acres of commercial zoned land available in Burlington. The property sits near the intersection of University Drive/Grand Oaks Boulevard and Huffman Mill Road close to Cone Health Alamance Regional Hospital.

The property can be developed as a build-to-suit with custom options to meet a user's specifications. Current ownership can facilitate planning, permitting and construction.

- » Located less than 1 mile from Cone Health Alamance Regional Hospital, offering an ideal setting for outpatient care, specialty medical practices, and healthcare services.
- » Office Institutional (OI) zoning makes this an ideal site for professional office and medical office uses.
- » Flexibility to accommodate small and large medical or professional office users.
- » Call broker for pricing.

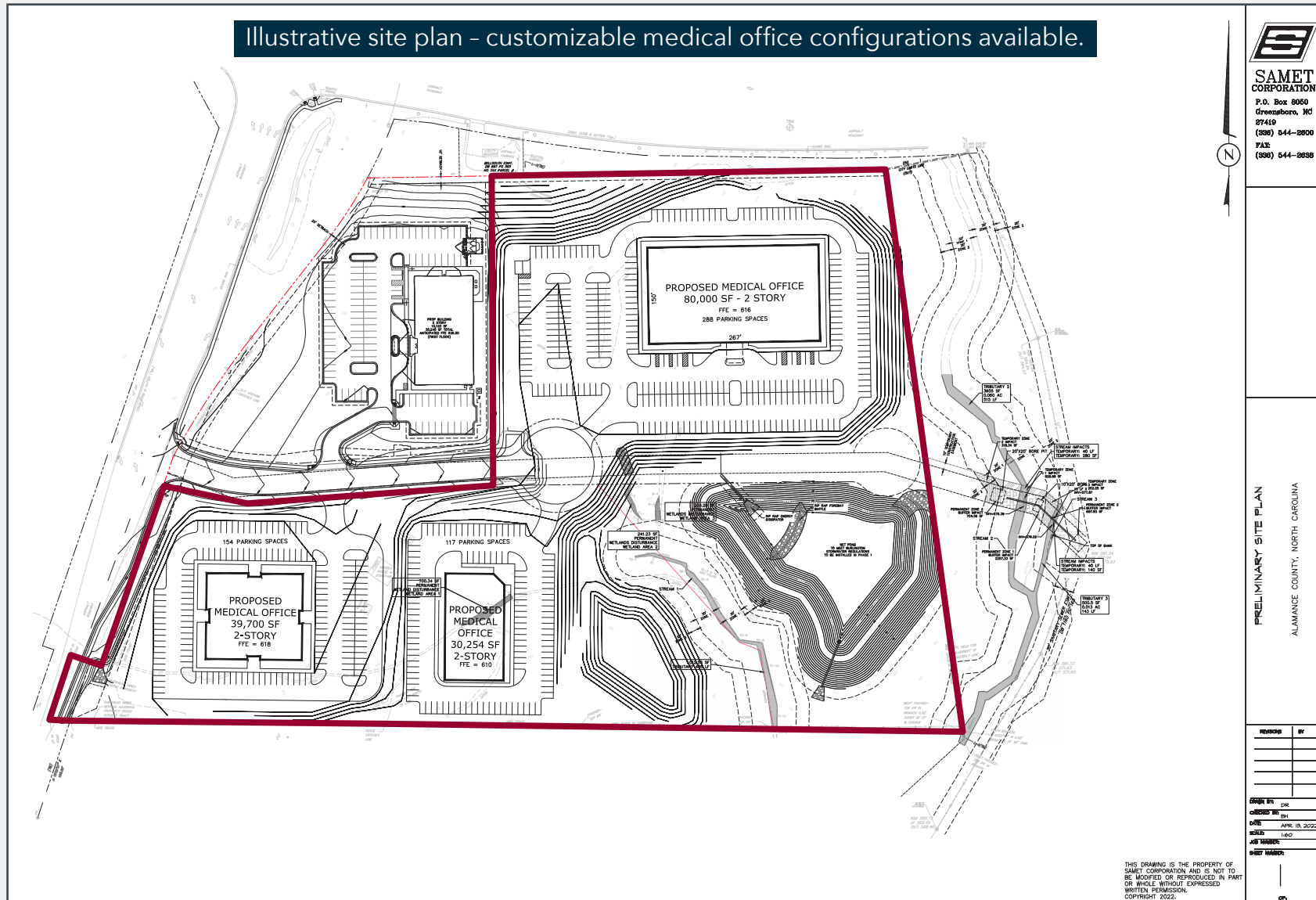
## Property Details

Site Size	18.94 acres
Alamance County PIN	177376
Zoning	OI (Office Institutional)
Water/Sewer	City of Burlington



# Conceptual Site Design

Grand Oaks Boulevard  
Burlington, NC 27215



Moss Withers, SIOR, MBA  
mwithers@lee-associates.com  
O: 919.576.2501

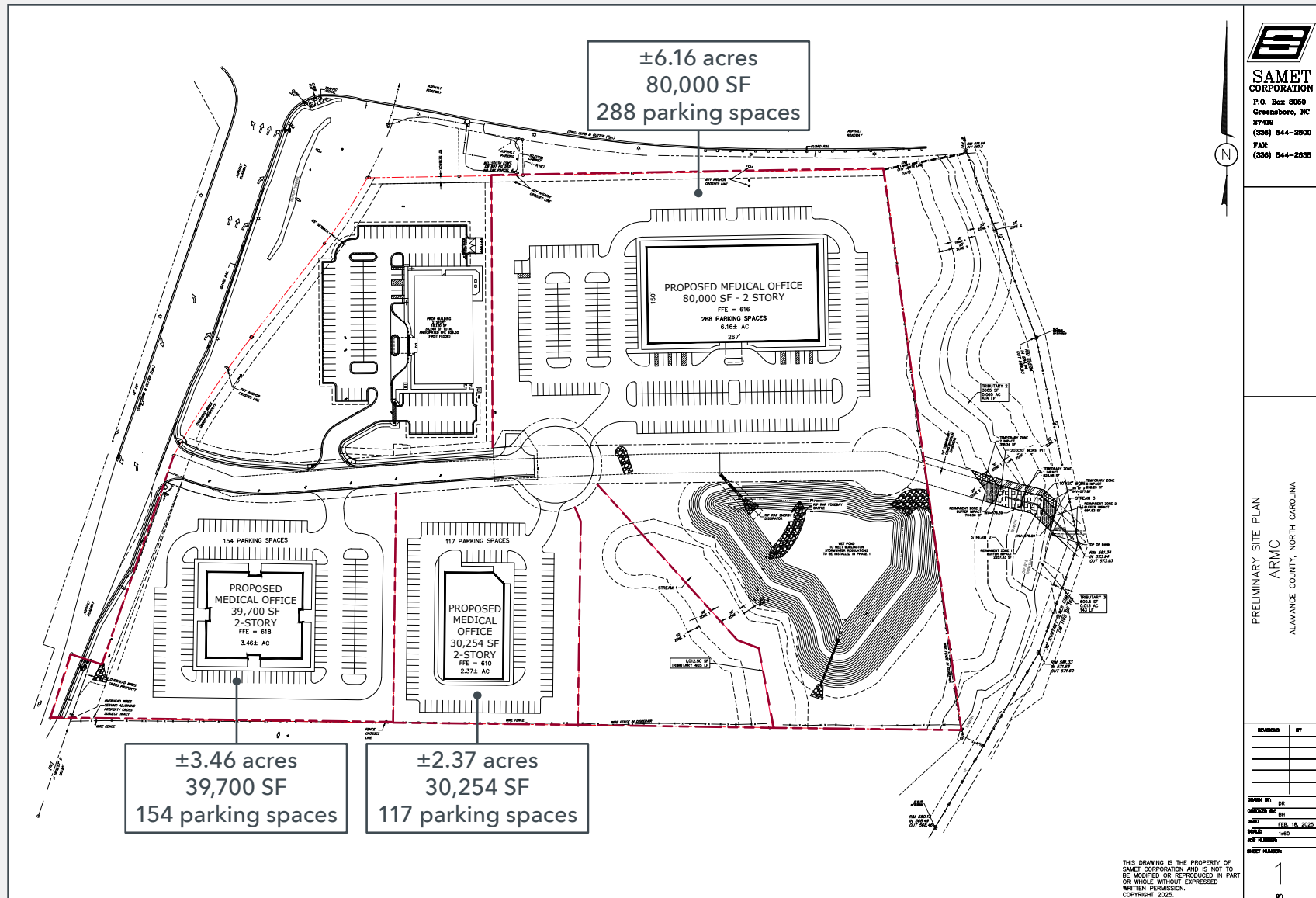
Karah Jennings McConnell  
kjennings@lee-associates.com  
O: 919.576.2502  
C: 919.817.0705

Silas Fortuin  
sfortuin@lee-associates.com  
O: 919.591.2271  
C: 208.316.3718

**LEE & ASSOCIATES**  
COMMERCIAL REAL ESTATE SERVICES  
RALEIGH DURHAM



**Grand Oaks Boulevard**  
Burlington, NC 27215





Logos for retail and fitness stores:

- BJS
- five BELOW
- ANYTIME FITNESS
- KOHL'S
- DICK'S SPORTING GOODS

Alamance Crossing

Logos for retail stores:

- Walmart
- TRACTOR SUPPLY CO.
- Academy Sports + Outdoors
- Burlington

Logos for retail and food stores:

- Target
- BEST BUY
- PET SMART
- ULTA BEAUTY
- TJ-maxx
- ROSS DRESS FOR LESS
- Michaels
- Ashley HOMESTORE
- Chick-fil-A
- McDonald's
- Starbucks

Logos for retail and home goods stores:

- belk
- Bath & Body Works
- Dillard's
- Red Robin GOURMET BURGERS & BEERS
- BARNES & NOBLE
- JCPenney
- HOBBY LOBBY
- KAY JEWELERS
- Bath & Body Works
- LOFT

Cone Health Alamance Regional

1 miles

Grand Oaks Blvd

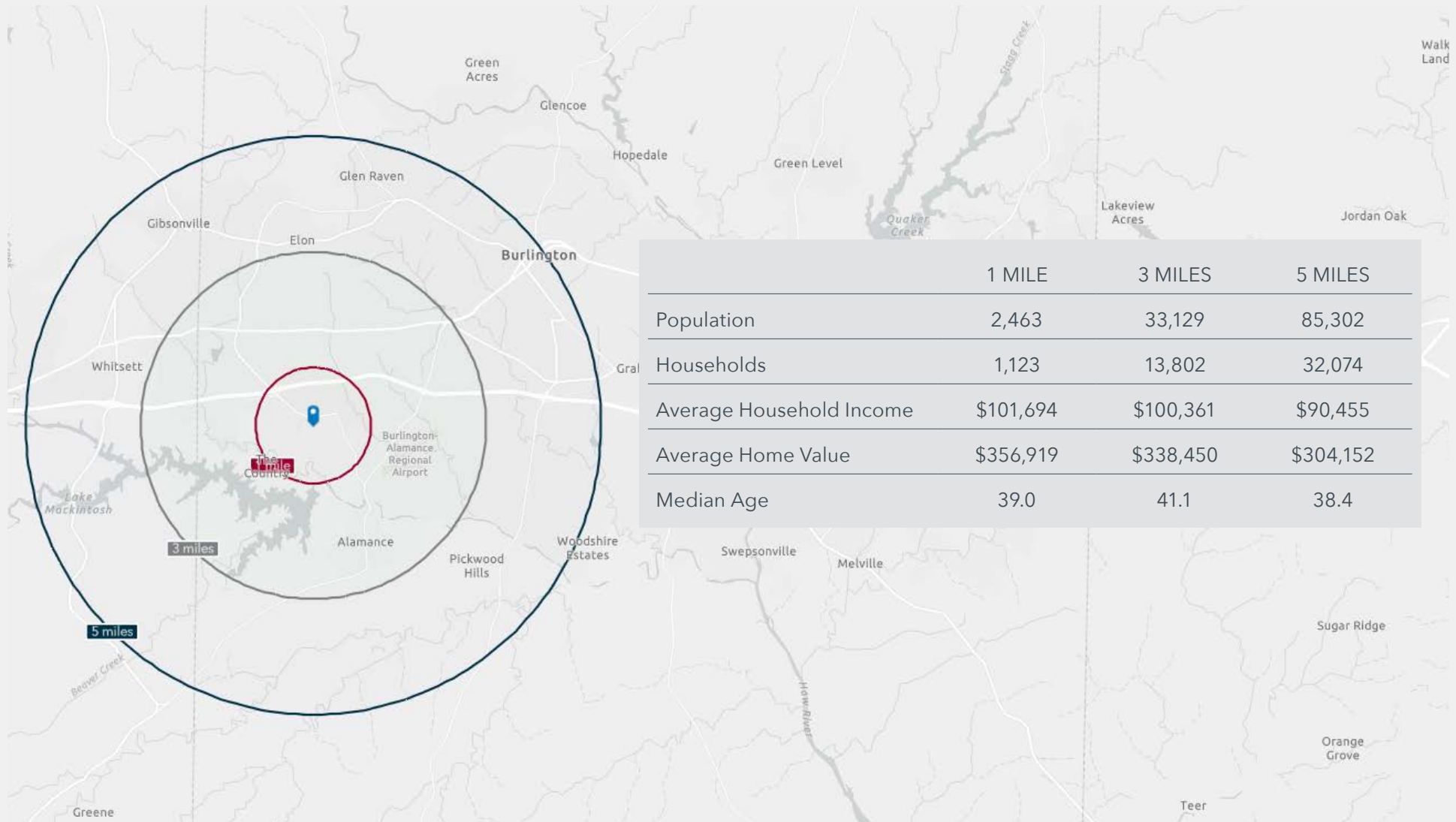
Grand Oaks Blvd





# Demographics

Grand Oaks Boulevard  
Burlington, NC 27215



Moss Withers, SIOR, MBA  
mwithers@lee-associates.com  
O: 919.576.2501

Karah Jennings McConnell  
kjennings@lee-associates.com  
O: 919.576.2502  
C: 919.817.0705

Silas Fortuin  
sfortuin@lee-associates.com  
O: 919.591.2271  
C: 208.316.3718

**LEE & ASSOCIATES**  
COMMERCIAL REAL ESTATE SERVICES  
RALEIGH DURHAM