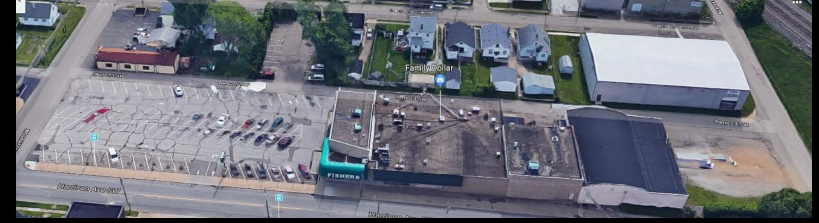
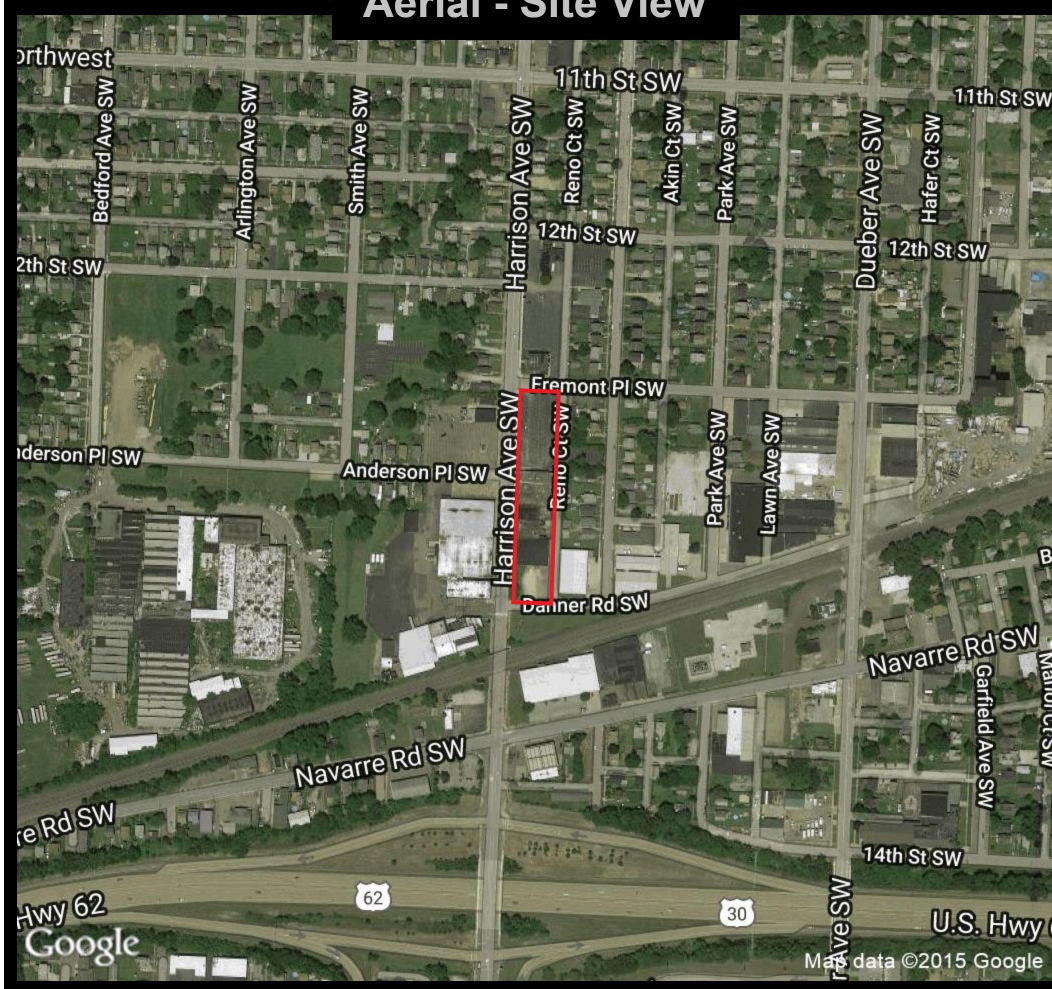


1308 Harrison Ave SW \$4-\$8/Sq. Ft. NNN
 Canton, OH 44706

*NNN includes but not limited to Real Estate Taxes, Insurance, and CAM (such as parking lot maintenance, snow removal, lawn care, etc.)

RETAIL SPACE FOR LEASE

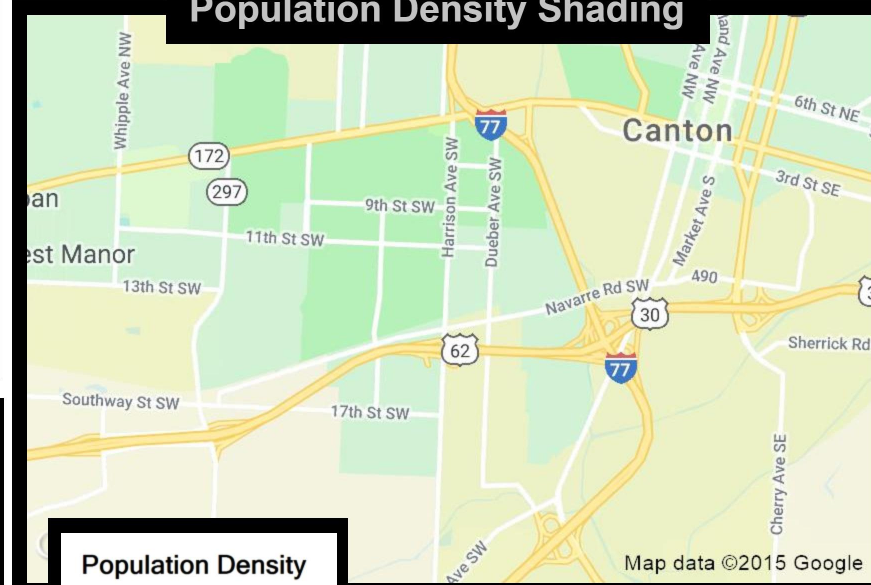
Aerial - Site View



Available Suites in former Grocery store with Family Dollar, opened early 2019
 7,992 sq. ft. @ \$4/sq. ft.
 5,949 sq. ft. @ \$4/sq. ft.
 3,343 sq. ft. @ \$8/sq. ft.

Great location on Harrison Avenue between Fremont Place and Danner Road

Population Density Shading



Demographic Data

	1 mi radius	3 mi radius	5 mi radius
Population (2019)	13,108	68,524	133,149
Households (2019)	5,318	29,853	59,133
Median household income (2019)	\$36,214	\$41,242	\$46,483
Total Employees	9,431	47,832	76,542
Total Establishments	570	3,202	5,857

Population Density

By Blockgroups

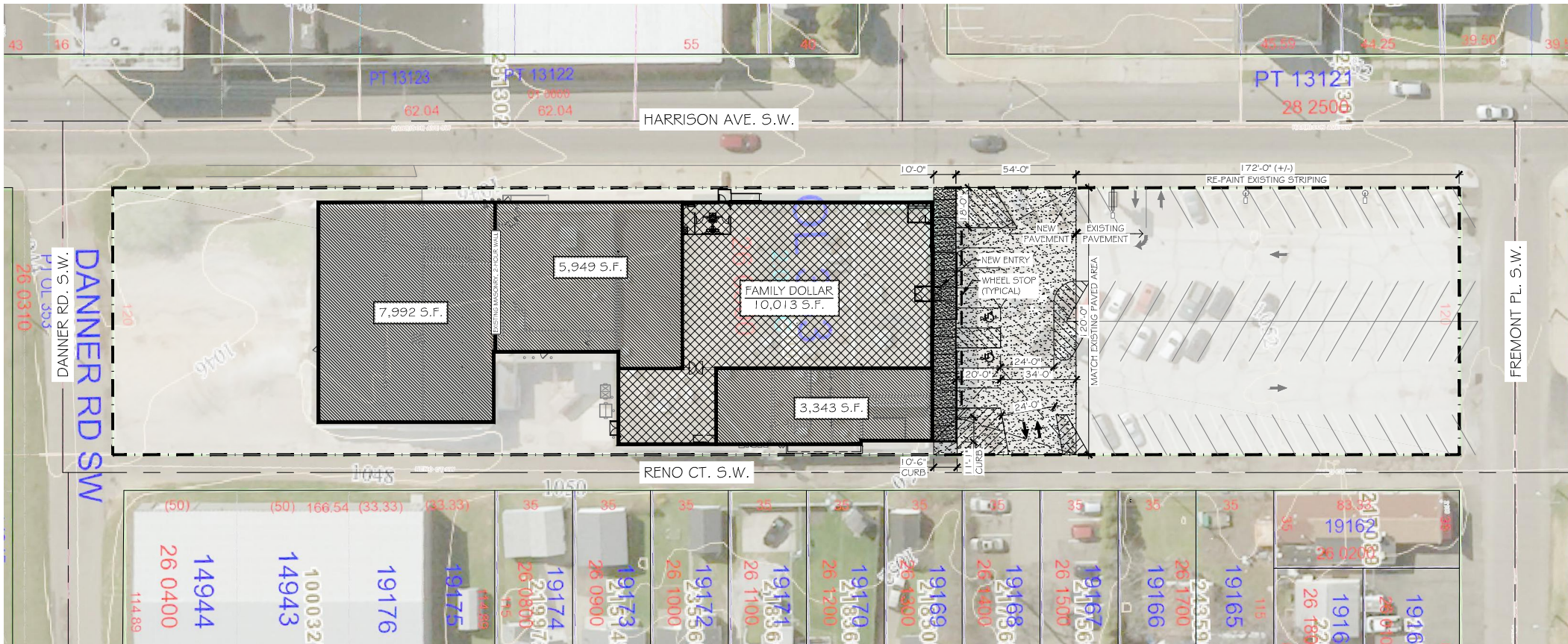
- 7,500 or more
- 5,000 to 7,500
- 2,500 to 5,000
- 1,000 to 2,500
- Less than 1,000

COCCA DEVELOPMENT, LTD

100 DEBARTOLO PLACE SUITE 400 BOARDMAN, OHIO 44512
 (330) 729-1010

WWW.COCCADEVELOPMENT.COM

This map was produced using data from private and government sources deemed to be reliable. The information herein is provided without representation or warranty.



GENERAL SITE PLAN

SCALE: NOT TO SCALE

1308 Harrison Ave SW
Canton, OH 44706

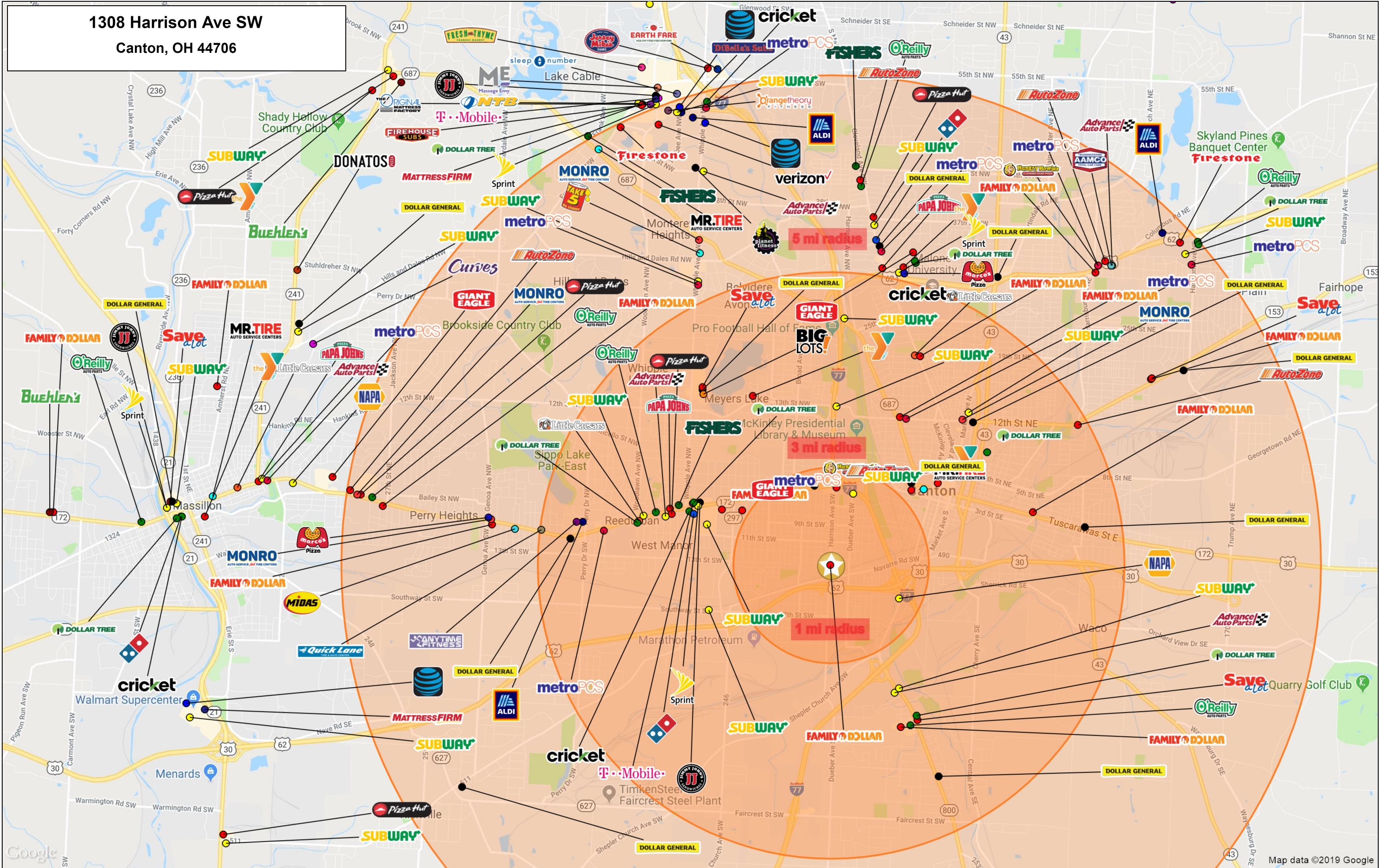


1308 Harrison Ave SW
Canton, OH 44706



Lat: 40.78683 Long: -81.39783 Zoom: 18
Logos are for identification purposes only and may be trademarks of their respective companies.

1308 Harrison Ave SW
Canton, OH 44706



GRAPHIC PROFILE

2000-2010 Census, 2019 Estimates with 2024 Projections

Calculated using Weighted Block Centroid from Block Groups

Lat/Lon: 40.788/-81.398

RGRAP3

1308 Harrison Ave SW

Canton, OH 44706

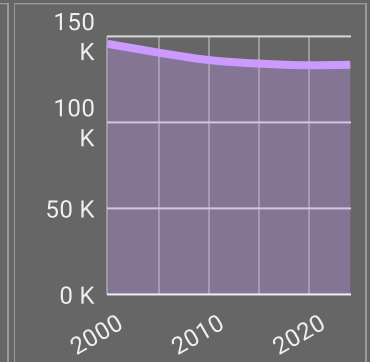
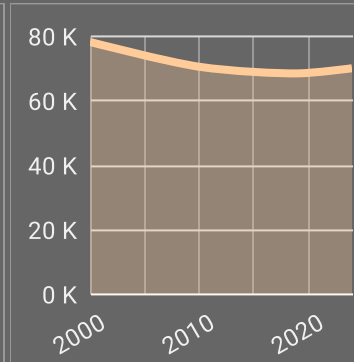
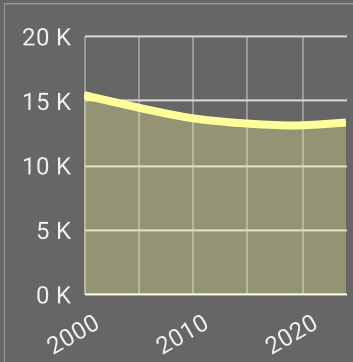
1 mi radius

3 mi radius

5 mi radius

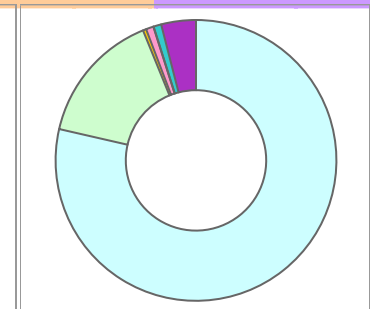
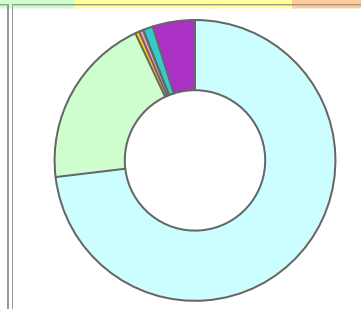
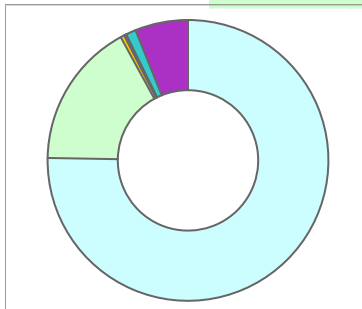
Population

Estimated Population (2019)	13,093	68,531	133,149
Projected Population (2024)	13,330	70,129	133,366
Census Population (2010)	13,647	70,591	136,120
Census Population (2000)	15,453	78,283	145,568
Projected Annual Growth (2019-2024)	237 0.4%	1,598 0.5%	217 -
Historical Annual Growth (2010-2019)	-554 -0.5%	-2,060 -0.3%	-2,971 -0.2%
Historical Annual Growth (2000-2010)	-1,806 -1.2%	-7,693 -1.0%	-9,448 -0.6%
Estimated Population Density (2019)	4,170 psm	2,425 psm	1,696 psm
Trade Area Size	3.1 sq mi	28.3 sq mi	78.5 sq mi



Race and Ethnicity (2019)

Not Hispanic or Latino Population	12,676 96.8%	66,200 96.6%	129,179 97.0%
White	9,678 76.3%	49,038 74.1%	102,599 79.4%
Black or African American	2,164 17.1%	13,456 20.3%	20,042 15.5%
American Indian or Alaska Native	54 0.4%	242 0.4%	399 0.3%
Asian	19 0.1%	295 0.4%	1,124 0.9%
Hawaiian or Pacific Islander	4 -	13 -	24 -
Other Race	43 0.3%	162 0.2%	232 0.2%
Two or More Races	715 5.6%	2,993 4.5%	4,759 3.7%
Hispanic or Latino Population	417 3.2%	2,331 3.4%	3,970 3.0%
White	178 42.7%	1,061 45.5%	2,036 51.3%
Black or African American	32 7.7%	187 8.0%	266 6.7%
American Indian or Alaska Native	2 0.6%	87 3.7%	108 2.7%
Asian	10 2.4%	20 0.9%	31 0.8%
Hispanic Hawaiian or Pacific Islander	2 0.4%	16 0.7%	17 0.4%
Other Race	108 25.9%	605 26.0%	956 24.1%
Two or More Races	84 20.2%	355 15.2%	557 14.0%



White Black or African American American Indian or Alaska Native Asian Hawaiian or Pacific Islander Other Race 2+ Races

This report was produced using data from private and government sources deemed to be reliable. The information herein is provided without representation or warranty.

GRAPHIC PROFILE

2000-2010 Census, 2019 Estimates with 2024 Projections

Calculated using Weighted Block Centroid from Block Groups

Lat/Lon: 40.788/-81.398

RGRAP3

1308 Harrison Ave SW

Canton, OH 44706

1 mi radius

3 mi radius

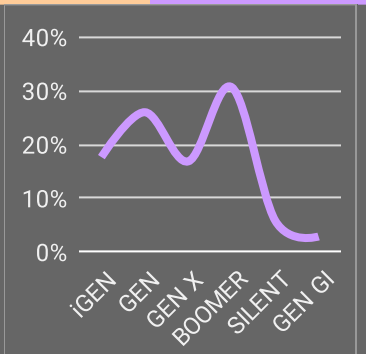
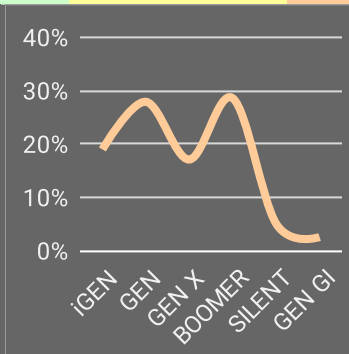
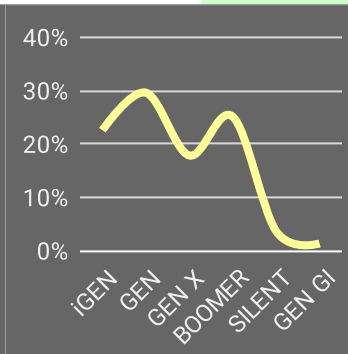
5 mi radius

Age Distribution (2019)

Age Group	1 mi radius	3 mi radius	5 mi radius
Age Under 5 Years	1,018 7.8%	4,593 6.7%	8,129 6.1%
Age 5 to 9 Years	974 7.4%	4,245 6.2%	7,692 5.8%
Age 10 to 14 Years	960 7.3%	4,153 6.1%	7,701 5.8%
Age 15 to 19 Years	841 6.4%	4,314 6.3%	7,971 6.0%
Age 20 to 24 Years	948 7.2%	5,023 7.3%	8,866 6.7%
Age 25 to 29 Years	1,122 8.6%	5,266 7.7%	9,478 7.1%
Age 30 to 34 Years	963 7.4%	4,503 6.6%	8,333 6.3%
Age 35 to 39 Years	860 6.6%	4,074 5.9%	7,775 5.8%
Age 40 to 44 Years	728 5.6%	3,594 5.2%	6,934 5.2%
Age 45 to 49 Years	744 5.7%	4,019 5.9%	7,757 5.8%
Age 50 to 54 Years	752 5.7%	4,231 6.2%	8,341 6.3%
Age 55 to 59 Years	805 6.1%	4,562 6.7%	9,303 7.0%
Age 60 to 64 Years	754 5.8%	4,282 6.2%	9,152 6.9%
Age 65 to 69 Years	560 4.3%	3,640 5.3%	7,820 5.9%
Age 70 to 74 Years	415 3.2%	2,850 4.2%	6,229 4.7%
Age 75 to 79 Years	285 2.2%	1,961 2.9%	4,521 3.4%
Age 80 to 84 Years	191 1.5%	1,487 2.2%	3,289 2.5%
Age 85 Years or Over	174 1.3%	1,735 2.5%	3,857 2.9%
Median Age	32.7	37.2	39.9

Generation (2019)

Generation	1 mi radius	3 mi radius	5 mi radius
iGeneration (Age Under 15 Years)	2,952 22.5%	12,990 19.0%	23,522 17.7%
Generation 9/11 Millennials (Age 15 to 34 Years)	3,873 29.6%	19,105 27.9%	34,648 26.0%
Gen Xers (Age 35 to 49 Years)	2,332 17.8%	11,688 17.1%	22,467 16.9%
Baby Boomers (Age 50 to 74 Years)	3,286 25.1%	19,565 28.5%	40,846 30.7%
Silent Generation (Age 75 to 84 Years)	476 3.6%	3,448 5.0%	7,810 5.9%
G.I. Generation (Age 85 Years or Over)	174 1.3%	1,735 2.5%	3,857 2.9%



This report was produced using data from private and government sources deemed to be reliable. The information herein is provided without representation or warranty.

GRAPHIC PROFILE

2000-2010 Census, 2019 Estimates with 2024 Projections

Calculated using Weighted Block Centroid from Block Groups

Lat/Lon: 40.788/-81.398

RGRAP3

1308 Harrison Ave SW

Canton, OH 44706

1 mi radius

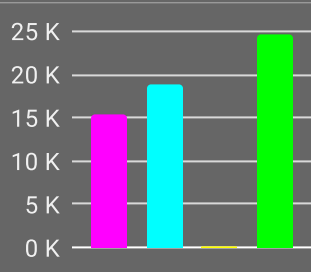
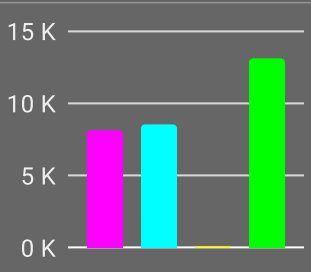
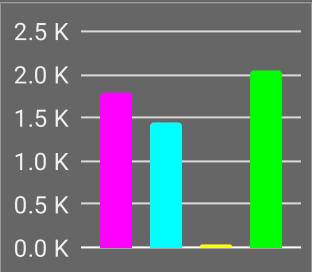
3 mi radius

5 mi radius

Household Type (2019)

	1 mi radius	3 mi radius	5 mi radius
Total Households	5,312	29,857	59,133
Family Households	3,234 60.9%	16,662 55.8%	34,168 57.8%
Family Households with Children	1,793 55.4%	8,184 49.1%	15,374 45.0%
Family Households No Children	1,441 44.6%	8,478 50.9%	18,794 55.0%
Non-Family Households	2,078 39.1%	13,194 44.2%	24,965 42.2%
Non-Family Households with Children	37 1.8%	148 1.1%	247 1.0%
Non-Family Households No Children	2,041 98.2%	13,046 98.9%	24,718 99.0%

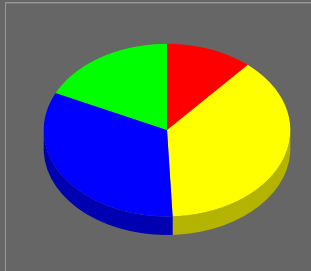
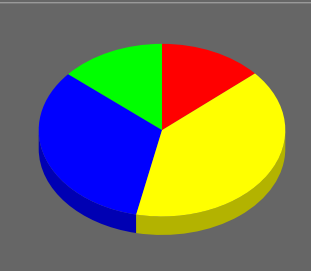
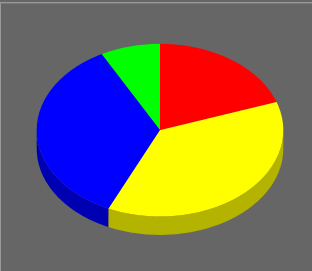
- Family Households with Children
- Family Households No Children
- Non-Family Households with Children
- Non-Family Households No Children



Education Attainment (2019)

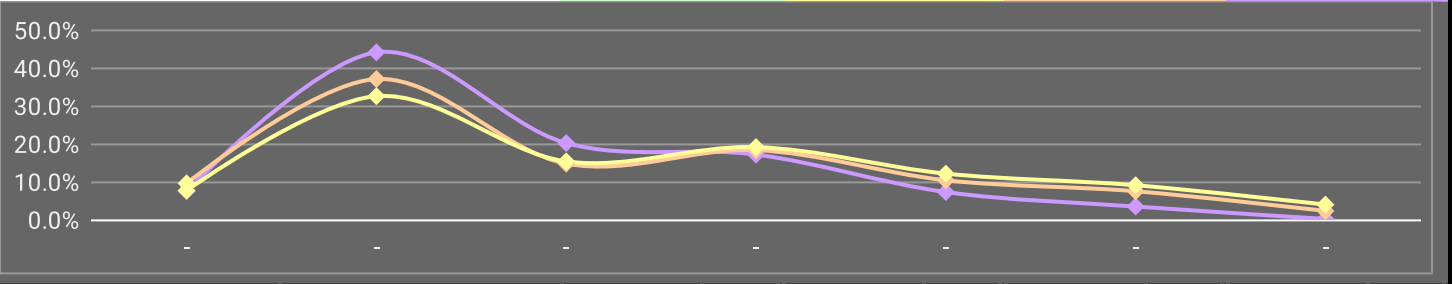
	1 mi radius	3 mi radius	5 mi radius
Elementary or Some High School	1,647 19.7%	6,282 13.6%	10,546 11.4%
High School Graduate	3,101 37.1%	18,372 39.8%	35,177 37.9%
Some College or Associate Degree	2,949 35.3%	15,180 32.9%	30,410 32.8%
Bachelor or Graduate Degree	655 7.8%	6,370 13.8%	16,657 18.0%

- Elementary or Some High School
- High School Graduate
- Some College or Associate Degree
- Bachelor or Graduate Degree



Household Income (2019)

	1 mi radius	3 mi radius	5 mi radius
Estimated Average Household Income	\$43,187	\$50,583	\$57,805
Estimated Median Household Income	\$36,208	\$41,243	\$46,483
HH Income Under \$10,000	400 7.5%	2,860 9.6%	4,548 7.7%
HH Income \$10,000 to \$34,999	2,344 44.1%	11,073 37.1%	19,263 32.6%
HH Income \$35,000 to \$49,999	1,074 20.2%	4,414 14.8%	9,087 15.4%
HH Income \$50,000 to \$74,999	912 17.2%	5,476 18.3%	11,319 19.1%
HH Income \$75,000 to \$99,999	387 7.3%	3,106 10.4%	7,186 12.2%
HH Income \$100,000 to \$149,999	184 3.5%	2,241 7.5%	5,376 9.1%
HH Income \$150,000 or More	10 0.2%	687 2.3%	2,354 4.0%



This report was produced using data from private and government sources deemed to be reliable. The information herein is provided without representation or warranty.

EXPANDED PROFILE

2000-2010 Census, 2019 Estimates with 2024 Projections

Calculated using Weighted Block Centroid from Block Groups

Lat/Lon: 40.788/-81.398

RF5

1308 Harrison Ave SW

Canton, OH 44706

	1 mi radius		3 mi radius		5 mi radius	
Population						
Estimated Population (2019)	13,093		68,531		133,149	
Projected Population (2024)	13,330		70,129		133,366	
Census Population (2010)	13,647		70,591		136,120	
Census Population (2000)	15,453		78,283		145,568	
Projected Annual Growth (2019 to 2024)	237	0.4%	1,598	0.5%	217	-
Historical Annual Growth (2010 to 2019)	-554	-0.5%	-2,060	-0.3%	-2,971	-0.2%
Historical Annual Growth (2000 to 2010)	-1,806	-1.2%	-7,693	-1.0%	-9,448	-0.6%
Estimated Population Density (2019)	4,170 psm		2,425 psm		1,696 psm	
Trade Area Size	3.1 sq mi		28.3 sq mi		78.5 sq mi	
Households						
Estimated Households (2019)	5,312		29,857		59,133	
Projected Households (2024)	5,544		31,218		60,514	
Census Households (2010)	5,254		29,168		57,238	
Census Households (2000)	6,131		32,089		59,750	
Estimated Households with Children (2019)	1,830	34.5%	8,332	27.9%	15,621	26.4%
Estimated Average Household Size (2019)	2.43		2.22		2.20	
Average Household Income						
Estimated Average Household Income (2019)	\$43,187		\$50,583		\$57,805	
Projected Average Household Income (2024)	\$48,917		\$57,663		\$67,903	
Estimated Average Family Income (2019)	\$49,318		\$63,484		\$72,488	
Median Household Income						
Estimated Median Household Income (2019)	\$36,208		\$41,243		\$46,483	
Projected Median Household Income (2024)	\$41,878		\$47,380		\$53,804	
Estimated Median Family Income (2019)	\$41,679		\$51,521		\$58,132	
Per Capita Income						
Estimated Per Capita Income (2019)	\$17,678		\$22,272		\$25,850	
Projected Per Capita Income (2024)	\$20,498		\$25,898		\$30,988	
Estimated Per Capita Income 5 Year Growth	\$2,821	16.0%	\$3,626	16.3%	\$5,138	19.9%
Estimated Average Household Net Worth (2019)	\$152,558		\$232,540		\$290,889	
Daytime Demos (2019)						
Total Businesses	568		3,202		5,857	
Total Employees	9,376		47,832		76,542	
Company Headquarter Businesses	7	1.2%	21	0.7%	31	0.5%
Company Headquarter Employees	3,564	38.0%	6,255	13.1%	7,155	9.3%
Employee Population per Business	16.5		14.9		13.1	
Residential Population per Business	23.0		21.4		22.7	

This report was produced using data from private and government sources deemed to be reliable. The information herein is provided without representation or warranty.

EXPANDED PROFILE

2000-2010 Census, 2019 Estimates with 2024 Projections

Calculated using Weighted Block Centroid from Block Groups

Lat/Lon: 40.788/-81.398

RF5

1308 Harrison Ave SW

Canton, OH 44706

Race & Ethnicity

	1 mi radius		3 mi radius		5 mi radius	
White (2019)	9,856	75.3%	50,099	73.1%	104,635	78.6%
Black or African American (2019)	2,196	16.8%	13,643	19.9%	20,308	15.3%
American Indian or Alaska Native (2019)	57	0.4%	329	0.5%	507	0.4%
Asian (2019)	29	0.2%	315	0.5%	1,156	0.9%
Hawaiian or Pacific Islander (2019)	6	-	29	-	40	-
Other Race (2019)	151	1.2%	767	1.1%	1,187	0.9%
Two or More Races (2019)	799	6.1%	3,348	4.9%	5,316	4.0%
Not Hispanic or Latino Population (2019)	12,676	96.8%	66,200	96.6%	129,179	97.0%
Hispanic or Latino Population (2019)	417	3.2%	2,331	3.4%	3,970	3.0%
Not Hispanic or Latino Population (2024)	12,895	96.7%	67,653	96.5%	129,259	96.9%
Hispanic or Latino Population (2024)	436	3.3%	2,476	3.5%	4,106	3.1%
Not Hispanic or Latino Population (2010)	13,344	97.8%	68,905	97.6%	133,296	97.9%
Hispanic or Latino Population (2010)	303	2.2%	1,686	2.4%	2,823	2.1%
Not Hispanic or Latino Population (2000)	15,289	98.9%	77,340	98.8%	143,938	98.9%
Hispanic or Latino Population (2000)	163	1.1%	943	1.2%	1,630	1.1%
Projected Hispanic Annual Growth (2019 to 2024)	19	0.9%	145	1.2%	137	0.7%
Historic Hispanic Annual Growth (2000 to 2019)	254	8.2%	1,388	7.7%	2,340	7.6%

Age Distribution (2019)

Age Under 5	1,018	7.8%	4,593	6.7%	8,129	6.1%
Age 5 to 9 Years	974	7.4%	4,245	6.2%	7,692	5.8%
Age 10 to 14 Years	960	7.3%	4,153	6.1%	7,701	5.8%
Age 15 to 19 Years	841	6.4%	4,314	6.3%	7,971	6.0%
Age 20 to 24 Years	948	7.2%	5,023	7.3%	8,866	6.7%
Age 25 to 29 Years	1,122	8.6%	5,266	7.7%	9,478	7.1%
Age 30 to 34 Years	963	7.4%	4,503	6.6%	8,333	6.3%
Age 35 to 39 Years	860	6.6%	4,074	5.9%	7,775	5.8%
Age 40 to 44 Years	728	5.6%	3,594	5.2%	6,934	5.2%
Age 45 to 49 Years	744	5.7%	4,019	5.9%	7,757	5.8%
Age 50 to 54 Years	752	5.7%	4,231	6.2%	8,341	6.3%
Age 55 to 59 Years	805	6.1%	4,562	6.7%	9,303	7.0%
Age 60 to 64 Years	754	5.8%	4,282	6.2%	9,152	6.9%
Age 65 to 74 Years	975	7.4%	6,490	9.5%	14,049	10.6%
Age 75 to 84 Years	476	3.6%	3,448	5.0%	7,810	5.9%
Age 85 Years or Over	174	1.3%	1,735	2.5%	3,857	2.9%
Median Age	32.7		37.2		39.9	

Gender Age Distribution (2019)

Female Population	6,681	51.0%	35,780	52.2%	69,360	52.1%
Age 0 to 19 Years	1,797	26.9%	8,477	23.7%	15,266	22.0%
Age 20 to 64 Years	3,944	59.0%	20,398	57.0%	39,100	56.4%
Age 65 Years or Over	941	14.1%	6,905	19.3%	14,994	21.6%
Female Median Age	34.0		38.7		41.7	
Male Population	6,412	49.0%	32,751	47.8%	63,789	47.9%
Age 0 to 19 Years	1,996	31.1%	8,827	27.0%	16,227	25.4%
Age 20 to 64 Years	3,732	58.2%	19,156	58.5%	36,841	57.8%
Age 65 Years or Over	684	10.7%	4,768	14.6%	10,722	16.8%
Male Median Age	31.5		35.6		38.0	

This report was produced using data from private and government sources deemed to be reliable. The information herein is provided without representation or warranty.

EXPANDED PROFILE

2000-2010 Census, 2019 Estimates with 2024 Projections

Calculated using Weighted Block Centroid from Block Groups

Lat/Lon: 40.788/-81.398

RF5

1308 Harrison Ave SW

Canton, OH 44706

Household Income Distribution (2019)

	1 mi radius		3 mi radius		5 mi radius	
HH Income \$200,000 or More	4	-	247	0.8%	916	1.5%
HH Income \$150,000 to \$199,999	6	0.1%	440	1.5%	1,437	2.4%
HH Income \$100,000 to \$149,999	184	3.5%	2,241	7.5%	5,376	9.1%
HH Income \$75,000 to \$99,999	387	7.3%	3,106	10.4%	7,186	12.2%
HH Income \$50,000 to \$74,999	912	17.2%	5,476	18.3%	11,319	19.1%
HH Income \$35,000 to \$49,999	1,074	20.2%	4,414	14.8%	9,087	15.4%
HH Income \$25,000 to \$34,999	846	15.9%	3,892	13.0%	7,161	12.1%
HH Income \$15,000 to \$24,999	946	17.8%	4,444	14.9%	7,818	13.2%
HH Income Under \$15,000	952	17.9%	5,596	18.7%	8,833	14.9%
HH Income \$35,000 or More	2,568	48.3%	15,924	53.3%	35,321	59.7%
HH Income \$75,000 or More	582	11.0%	6,034	20.2%	14,915	25.2%

Housing (2019)

	1 mi radius		3 mi radius		5 mi radius	
Total Housing Units	5,939		33,012		64,048	
Housing Units Occupied	5,312	89.4%	29,857	90.4%	59,133	92.3%
Housing Units Owner-Occupied	2,895	54.5%	17,065	57.2%	36,917	62.4%
Housing Units, Renter-Occupied	2,416	45.5%	12,792	42.8%	22,216	37.6%
Housing Units, Vacant	627	11.8%	3,156	10.6%	4,916	8.3%

Marital Status (2019)

	1 mi radius		3 mi radius		5 mi radius	
Never Married	4,373	43.1%	22,127	39.8%	39,467	36.0%
Currently Married	2,891	28.5%	18,134	32.6%	41,525	37.9%
Separated	387	3.8%	2,249	4.0%	3,853	3.5%
Widowed	649	6.4%	3,938	7.1%	7,920	7.2%
Divorced	1,840	18.1%	9,092	16.4%	16,862	15.4%

Household Type (2019)

	1 mi radius		3 mi radius		5 mi radius	
Population Family	10,310	78.7%	50,596	73.8%	100,634	75.6%
Population Non-Family	2,586	19.7%	15,614	22.8%	29,179	21.9%
Population Group Quarters	198	1.5%	2,321	3.4%	3,336	2.5%
Family Households	3,234	60.9%	16,662	55.8%	34,168	57.8%
Non-Family Households	2,078	39.1%	13,194	44.2%	24,965	42.2%
Married Couple with Children	681	23.5%	3,595	19.8%	7,787	18.8%
Average Family Household Size	3.2		3.0		2.9	

Household Size (2019)

	1 mi radius		3 mi radius		5 mi radius	
1 Person Households	1,686	31.7%	11,252	37.7%	21,497	36.4%
2 Person Households	1,605	30.2%	9,256	31.0%	19,720	33.3%
3 Person Households	842	15.9%	4,134	13.8%	8,086	13.7%
4 Person Households	599	11.3%	2,832	9.5%	5,630	9.5%
5 Person Households	329	6.2%	1,387	4.6%	2,574	4.4%
6 or More Person Households	251	4.7%	995	3.3%	1,626	2.7%

Household Vehicles (2019)

	1 mi radius		3 mi radius		5 mi radius	
Households with 0 Vehicles Available	640	12.1%	4,255	14.3%	6,137	10.4%
Households with 1 Vehicles Available	2,237	42.1%	11,235	37.6%	21,453	36.3%
Households with 2 or More Vehicles Available	2,434	45.8%	14,367	48.1%	31,543	53.3%
Total Vehicles Available	7,991		46,158		98,233	
Average Vehicles Per Household	1.5		1.5		1.7	

This report was produced using data from private and government sources deemed to be reliable. The information herein is provided without representation or warranty.

EXPANDED PROFILE

2000-2010 Census, 2019 Estimates with 2024 Projections

Calculated using Weighted Block Centroid from Block Groups

Lat/Lon: 40.788/-81.398

RF5

1308 Harrison Ave SW

Canton, OH 44706

Labor Force (2019)

	1 mi radius		3 mi radius		5 mi radius	
Estimated Labor Population Age 16 Years or Over	9,984		54,798		108,200	
Estimated Civilian Employed	5,986	60.0%	31,761	58.0%	63,581	58.8%
Estimated Civilian Unemployed	481	4.8%	2,294	4.2%	3,631	3.4%
Estimated in Armed Forces	-	-	25	-	67	-
Estimated Not in Labor Force	3,516	35.2%	20,718	37.8%	40,921	37.8%
Unemployment Rate	4.8%		4.2%		3.4%	

Occupation (2019)

	1 mi radius		3 mi radius		5 mi radius	
Occupation: Population Age 16 Years or Over	5,986		31,761		63,581	
Management, Business, Financial Operations	437	7.3%	3,048	9.6%	6,861	10.8%
Professional, Related	627	10.5%	4,544	14.3%	10,226	16.1%
Service	1,635	27.3%	7,435	23.4%	14,037	22.1%
Sales, Office	1,148	19.2%	7,591	23.9%	15,658	24.6%
Farming, Fishing, Forestry	9	0.1%	25	-	50	-
Construct, Extraction, Maintenance	542	9.0%	2,411	7.6%	4,612	7.3%
Production, Transport Material Moving	1,588	26.5%	6,707	21.1%	12,137	19.1%
White Collar Workers	2,212	37.0%	15,182	47.8%	32,745	51.5%
Blue Collar Workers	3,774	63.0%	16,579	52.2%	30,836	48.5%

Consumer Expenditure (2019)

	1 mi radius		3 mi radius		5 mi radius	
Total Household Expenditure	\$210.63 M		\$1.31 B		\$2.84 B	
Total Non-Retail Expenditure	\$111.31 M	52.8%	\$691.76 M	52.8%	\$1.5 B	52.8%
Total Retail Expenditure	\$99.32 M	47.2%	\$617.34 M	47.2%	\$1.34 B	47.2%
Apparel	\$7.23 M	3.4%	\$44.97 M	3.4%	\$97.48 M	3.4%
Contributions	\$6.27 M	3.0%	\$40.06 M	3.1%	\$88.32 M	3.1%
Education	\$5.36 M	2.5%	\$34.49 M	2.6%	\$75.4 M	2.7%
Entertainment	\$11.29 M	5.4%	\$71.27 M	5.4%	\$155.79 M	5.5%
Food and Beverages	\$31.78 M	15.1%	\$196.11 M	15.0%	\$422.76 M	14.9%
Furnishings and Equipment	\$7.03 M	3.3%	\$44.39 M	3.4%	\$97.05 M	3.4%
Gifts	\$4.63 M	2.2%	\$29.74 M	2.3%	\$65.34 M	2.3%
Health Care	\$18.58 M	8.8%	\$115.1 M	8.8%	\$248.99 M	8.8%
Household Operations	\$8.05 M	3.8%	\$50.37 M	3.8%	\$109.64 M	3.9%
Miscellaneous Expenses	\$3.92 M	1.9%	\$24.58 M	1.9%	\$53.41 M	1.9%
Personal Care	\$2.81 M	1.3%	\$17.54 M	1.3%	\$37.99 M	1.3%
Personal Insurance	\$1.31 M	0.6%	\$8.42 M	0.6%	\$18.67 M	0.7%
Reading	\$451.08 K	0.2%	\$2.84 M	0.2%	\$6.18 M	0.2%
Shelter	\$45.24 M	21.5%	\$279.79 M	21.4%	\$602.19 M	21.2%
Tobacco	\$1.59 M	0.8%	\$9.36 M	0.7%	\$19.58 M	0.7%
Transportation	\$38.04 M	18.1%	\$236.67 M	18.1%	\$514.98 M	18.2%
Utilities	\$17.04 M	8.1%	\$103.41 M	7.9%	\$221.21 M	7.8%

Educational Attainment (2019)

	1 mi radius		3 mi radius		5 mi radius	
Adult Population Age 25 Years or Over	8,352		46,204		92,790	
Elementary (Grade Level 0 to 8)	369	4.4%	1,782	3.9%	2,991	3.2%
Some High School (Grade Level 9 to 11)	1,277	15.3%	4,501	9.7%	7,555	8.1%
High School Graduate	3,101	37.1%	18,372	39.8%	35,177	37.9%
Some College	2,299	27.5%	11,800	25.5%	22,995	24.8%
Associate Degree Only	650	7.8%	3,381	7.3%	7,415	8.0%
Bachelor Degree Only	420	5.0%	3,901	8.4%	10,567	11.4%
Graduate Degree	235	2.8%	2,469	5.3%	6,090	6.6%

This report was produced using data from private and government sources deemed to be reliable. The information herein is provided without representation or warranty.

EXPANDED PROFILE

2000-2010 Census, 2019 Estimates with 2024 Projections

Calculated using Weighted Block Centroid from Block Groups

Lat/Lon: 40.788/-81.398

RF5

1308 Harrison Ave SW

Canton, OH 44706

Units In Structure (2019)

	1 mi radius		3 mi radius		5 mi radius	
1 Detached Unit	4,314	82.1%	21,935	75.2%	43,845	76.6%
1 Attached Unit	70	1.3%	611	2.1%	1,683	2.9%
2 to 4 Units	563	10.7%	3,062	10.5%	5,068	8.9%
5 to 9 Units	169	3.2%	1,255	4.3%	2,825	4.9%
10 to 19 Units	58	1.1%	1,064	3.6%	2,263	4.0%
20 to 49 Units	27	0.5%	460	1.6%	915	1.6%
50 or More Units	82	1.6%	1,241	4.3%	1,862	3.3%
Mobile Home or Trailer	28	0.5%	227	0.8%	672	1.2%
Other Structure	-	-	-	-	-	-

Homes Built By Year (2019)

Homes Built 2010 or later	54	1.0%	365	1.2%	843	1.5%
Homes Built 2000 to 2009	136	2.6%	934	3.2%	2,575	4.5%
Homes Built 1990 to 1999	123	2.3%	1,308	4.5%	3,407	6.0%
Homes Built 1980 to 1989	113	2.2%	1,246	4.3%	3,522	6.2%
Homes Built 1970 to 1979	304	5.8%	3,009	10.3%	8,033	14.0%
Homes Built 1960 to 1969	349	6.6%	3,035	10.4%	8,349	14.6%
Homes Built 1950 to 1959	853	16.2%	6,034	20.7%	12,033	21.0%
Homes Built Before 1949	3,379	64.3%	13,925	47.7%	20,370	35.6%

Home Values (2019)

Home Values \$1,000,000 or More	-	-	4	-	7	-
Home Values \$500,000 to \$999,999	21	0.7%	125	0.7%	427	1.2%
Home Values \$400,000 to \$499,999	13	0.5%	64	0.4%	225	0.6%
Home Values \$300,000 to \$399,999	45	1.6%	318	1.9%	1,088	3.0%
Home Values \$200,000 to \$299,999	165	5.7%	1,044	6.3%	3,182	8.9%
Home Values \$150,000 to \$199,999	195	6.7%	1,742	10.5%	4,776	13.3%
Home Values \$100,000 to \$149,999	357	12.4%	4,288	25.7%	10,481	29.2%
Home Values \$70,000 to \$99,999	529	18.3%	4,432	26.6%	8,617	24.0%
Home Values \$50,000 to \$69,999	548	19.0%	2,213	13.3%	3,965	11.1%
Home Values \$25,000 to \$49,999	761	26.4%	1,948	11.7%	2,676	7.5%
Home Values Under \$25,000	255	8.8%	871	5.2%	1,443	4.0%
Owner-Occupied Median Home Value	\$64,320		\$91,302		\$107,993	
Renter-Occupied Median Rent	\$549		\$533		\$552	

Transportation To Work (2019)

Drive to Work Alone	5,149	80.8%	26,829	80.8%	53,747	83.5%
Drive to Work in Carpool	552	8.7%	3,154	9.5%	5,090	7.9%
Travel to Work by Public Transportation	166	2.6%	755	2.3%	1,010	1.6%
Drive to Work on Motorcycle	-	-	15	-	28	-
Walk or Bicycle to Work	169	2.7%	806	2.4%	1,222	1.9%
Other Means	49	0.8%	226	0.7%	560	0.9%
Work at Home	285	4.5%	1,402	4.2%	2,716	4.2%

Travel Time (2019)

Travel to Work in 14 Minutes or Less	2,304	36.2%	11,875	35.8%	22,834	35.5%
Travel to Work in 15 to 29 Minutes	2,228	35.0%	12,124	36.5%	25,097	39.0%
Travel to Work in 30 to 59 Minutes	939	14.7%	4,890	14.7%	9,976	15.5%
Travel to Work in 60 Minutes or More	268	4.2%	1,566	4.7%	3,012	4.7%
Average Minutes Travel to Work	16.4		16.8		17.1	

This report was produced using data from private and government sources deemed to be reliable. The information herein is provided without representation or warranty.