

# MidPoint One

7125 JANES AVENUE  
WOODRIDGE, ILLINOIS



**±1,995 - 4,446 SF**  
**Office Space for Lease**



# MidPoint One

7125 JANES AVENUE  
WOODRIDGE, ILLINOIS



**MidPointOne**, located at **7125 Janes Avenue** in **Woodridge, Illinois**, is a 51,579 square foot, single-story office / flex opportunity with quality finishes, high ceilings, ample parking, and access to a shared dock.

The property is centrally located near 75th Street with immediate access to I-355/I-55 on the east and I-88 to the north. The property also benefits from proximity to the main thoroughfares of IL Route 34 and IL Route 83. An abundance of nearby restaurants, hotels, shopping and business services are available.

±1,995 SF  
TO  
±4,446 SF  
AVAILABLE

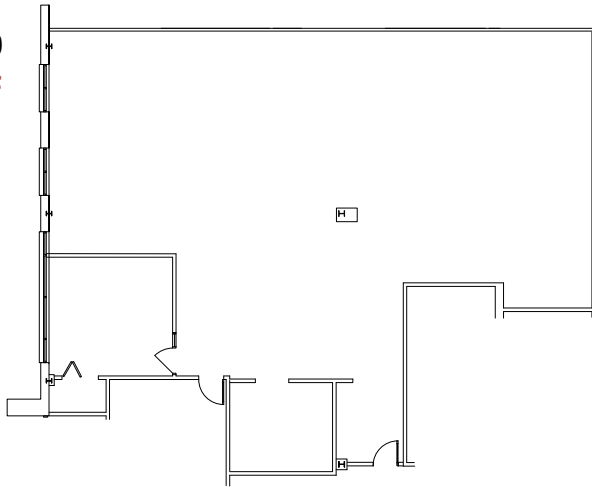
52,728 SF  
BUILDING

4.2:1,000  
PARKING RATIO

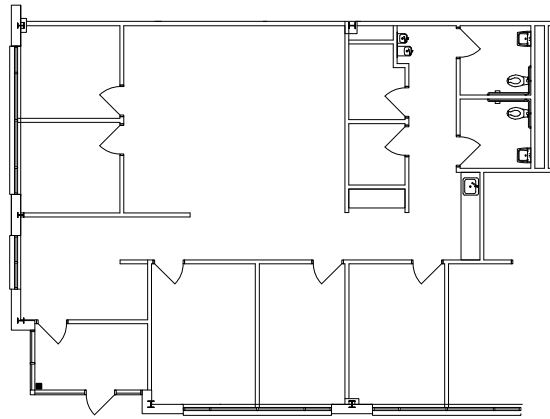




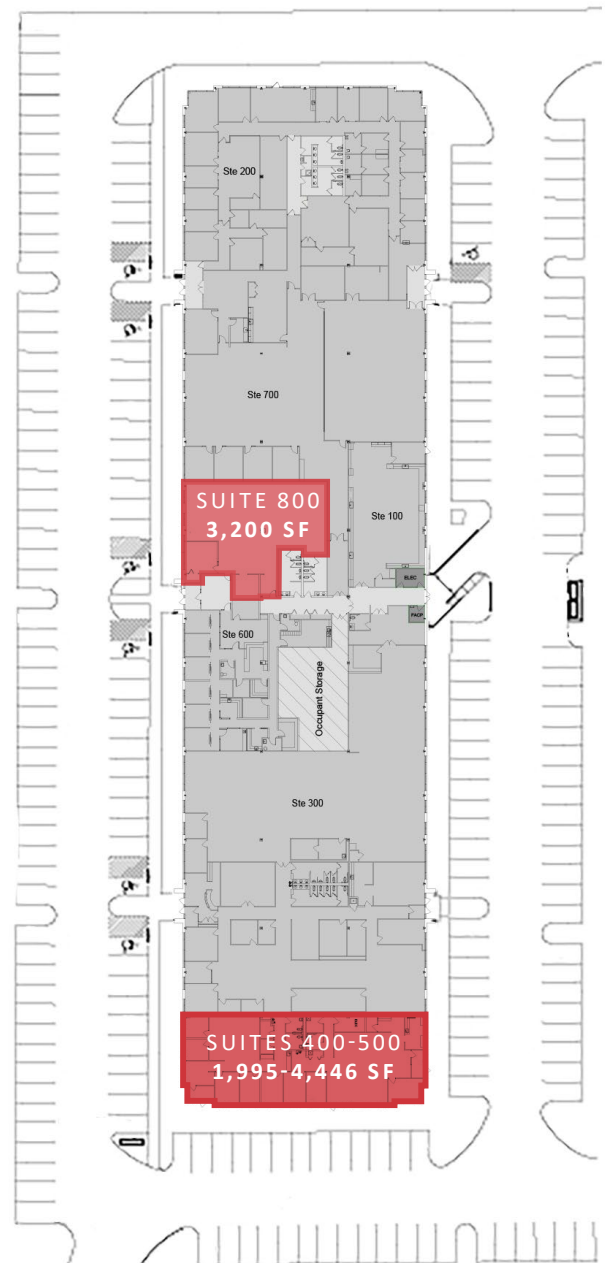
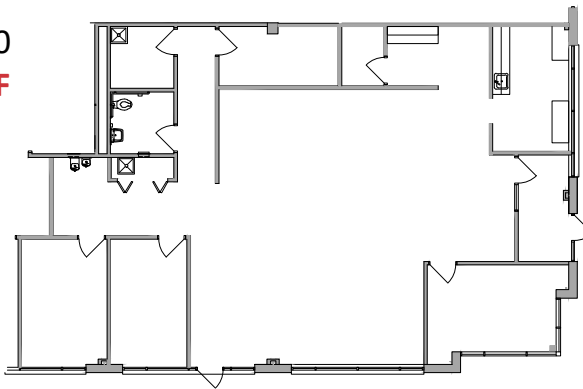
SUITE 800  
3,200 SF



SUITE 400  
1,995 SF



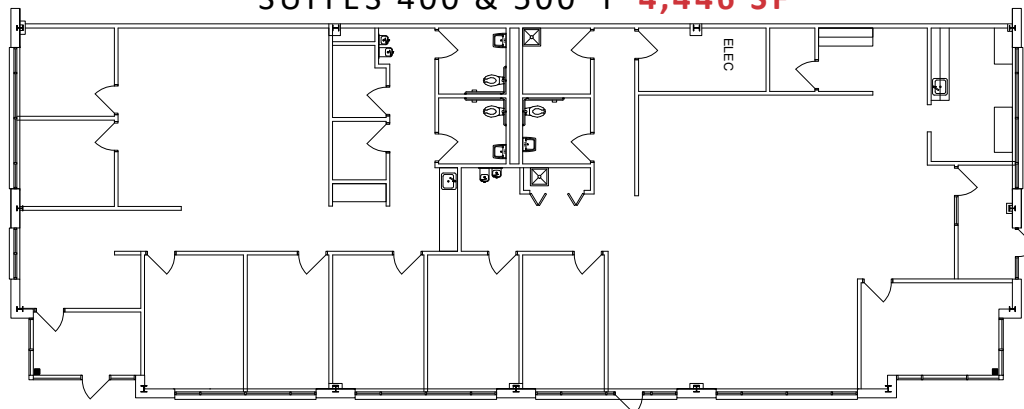
SUITE 500  
2,451 SF



SUITE 800  
3,200 SF

SUITES 400-500  
1,995-4,446 SF

SUITES 400 & 500 | 4,446 SF



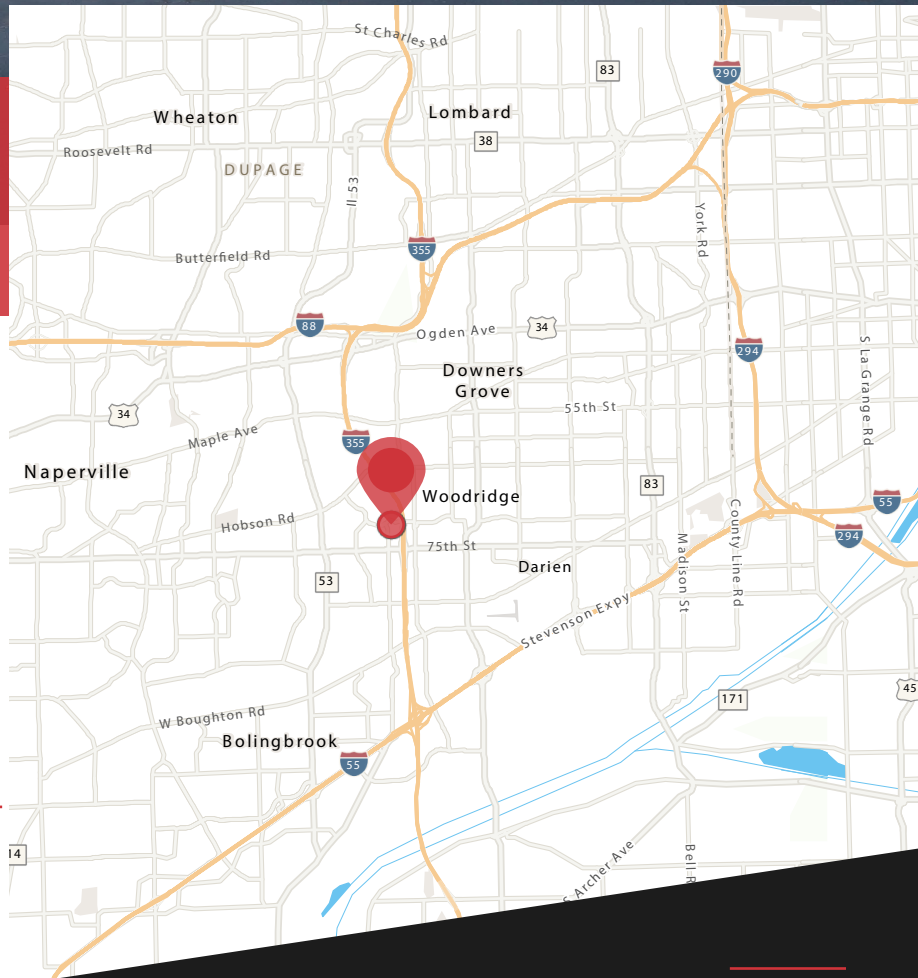


# MidPoint One

7125 JANES AVENUE  
WOODRIDGE, ILLINOIS

## ±1,995 SF to ±4,446 SF Office Space for Lease

- Near 4-way interchange at I-355 & 75th Street
- One (1) shared exterior dock & warehouse area
- Direct entry into suite
- 4.0/1,000 parking ratio
- HVAC controlled by tenant



**Jim Adler**

630 691 0605

jadler@hiffman.com

One Oakbrook Terrace  
Suite 400  
Oakbrook Terrace, Illinois 60181  
+1 630 932 1234