

# 349

GREENWICH STREET

BETWEEN HARRISON & JAY ST  
TRIBECA



# 349

## GREENWICH STREET

BETWEEN HARRISON & JAY ST  
TRIBECA

- Size:** 3,500 SF Ground Floor  
2,000 SF Lower Level
- Frontage:** 40'
- Ceiling Heights:** 12' Ground Floor  
9' Lower Level
- Possession:** Immediate
- Transportation:** 1 2 3
- Property Highlights:**
- Flagship retail opportunity
  - Space is in turnkey luxury retail condition
  - Steps away from Chambers street subway station
  - High foot traffic area in dense residential neighborhood
  - **Neighboring tenants include:** *The Westside, Sarabeth's, Alton Lane, TRNK, Chip City, Muse Paint Bar, The Hideaway Tribeca, Klein Epstein & Parker, Joseph Carini Carpets, Van Leeuwen, Starbucks, Glosslab, L'Angolo, McDonald's, J. Crew, Citibank*



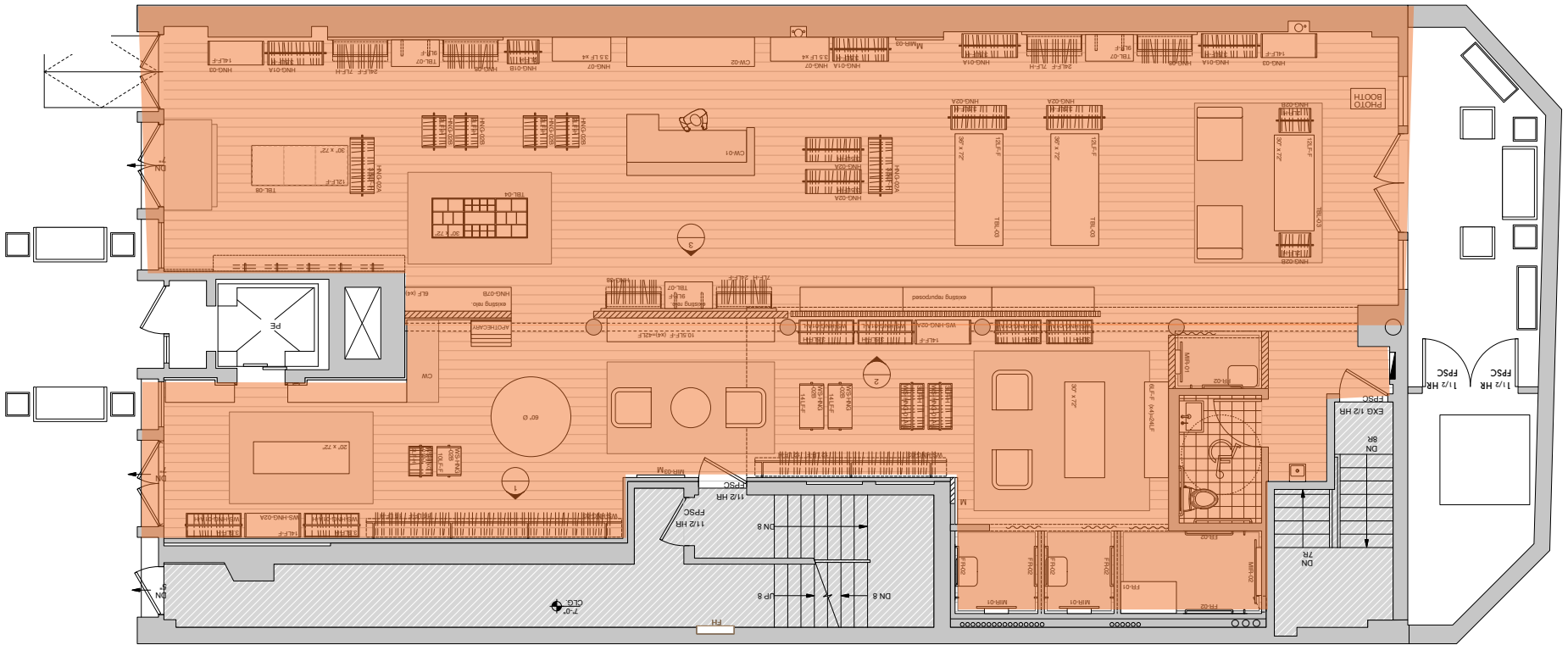
# 349

GREENWICH STREET



All information supplied in this marketing presentation and/or flyer is from sources deemed reliable and is furnished subject to errors, omissions, modifications, removal of listings from sale/lease and to any listing condition. Any square footage, dimensions, floor plans and/or technical data set forth are approximations and are subject to further elaboration/confirmation.

GREENWICH STREET



CONTACT OUR BROKERS  
FOR MORE INFORMATION:

**Hunter Lazan**  
HLazan@ksrny.com  
772.559.5195

**Jeff Geoghegan**  
JeffG@ksrny.com  
212.945.8984



1385 Broadway - 22nd Floor  
New York, NY 10018  
212.417.9217  
[www.ksrny.com](http://www.ksrny.com)

All information supplied in this marketing presentation and/or flyer is from sources deemed reliable and is furnished subject to errors, omissions, modifications, removal of listings from sale/lease and to any listing condition.  
Any square footage, dimensions, floor plans and/or technical data set forth are approximations and are subject to further elaboration/confirmation.