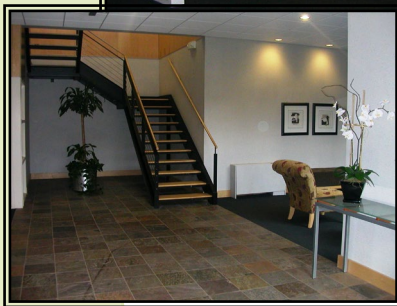


come take a walk in..

The Park

AT ALLENS CREEK

The Park at Allens Creek is one of Brighton's finest office parks.



Modern and
spacious natural
light filled
lobbies

Located on a beautiful 12
acre campus with walking paths
and Allens Creek running
through it!

We continuously strive to enhance the
comfortable atmosphere for our tenants with
upscale lobby renovations, summer flowers,
winter decorations, improvements to our
buildings, and ongoing suite maintenance.

The Park at Allens Creek
120 Allens Creek Road
Rochester, New York 14618

www.theparkatallenscreek.com

FOR A PERSONAL TOUR CONTACT SHELLY STRACHAN AT (585) 244-0720
Commercial Property Manager, info@theparkatallenscreek.com

CURRENT SUITES NOW AVAILABLE

Building 132 Suite 200D:

- 376 sq. ft. – Single office in a shared therapy suite with shared reception and breakroom.

Building 100 Suite 230:

- 594 sq. ft. – Large open suite with great view & light.

Building 140 Suite 200:

- 1,268 Sq. Ft. – Three office suite with spacious offices, large reception area, and a closet in each suite.

Building 150 Suite 240:

- 1,309 sq. ft. – Five offices, conference room, copy room, kitchenette, reception, new cabinets. Move in ready!

Building 150 Suite 250:

- 2,335 sq. ft. – Seven offices, large conference room, reception, storage room, and kitchen. Upgraded with crown molding and other wonderful details.

Building 100 Suite 100:

- 3,508 sq. ft. – Premier first floor suite with up to 12 offices, conference room, closets, storage, kitchenette, and reception area.

Hold your next meeting or event at The Park at Allens Creek! We have a Large Conference Room with seating for 6 to 40 people and adjacent kitchenette. This room is available for hourly or daily rental.

Signage throughout The Park Welcomes tenants and visitors



Sculptural Park benches add beauty and comfort to The Park.

The Park at Allens Creek is conveniently situated on Allens Creek Road at the intersection of I-590 and Monroe Avenue, in the Town of Brighton. It is located minutes from downtown Rochester, the Greater Rochester International Airport, restaurants, stores, and surrounding suburbs.

