

1001 DIVISION AVENUE S.
GRAND RAPIDS, MICHIGAN

OFFICE FOR SALE
9,696 Square Feet Available



**SIGNATURE
ASSOCIATES**
KNOW SIGNATURE | KNOW RESULTS

3-STORY OFFICE BUILDING

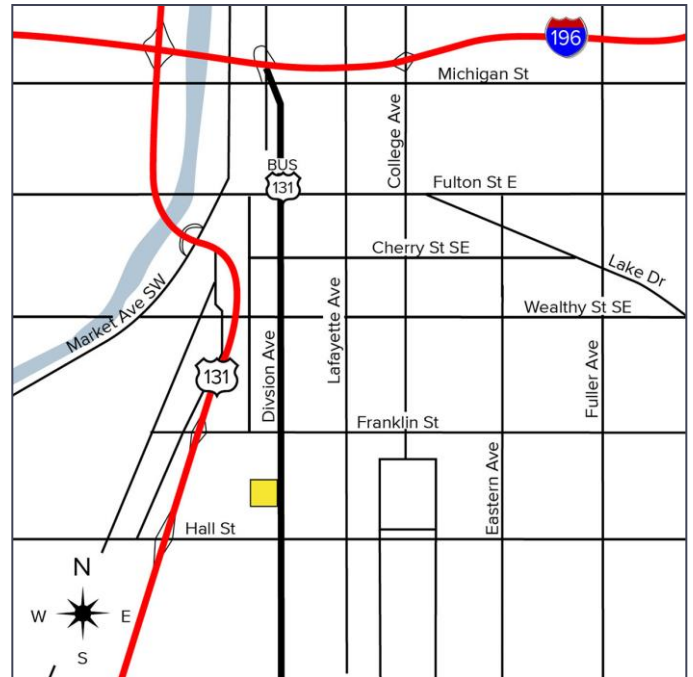
PRICE REDUCED



PROPERTY FEATURES

- 9,696 total building square feet
- 0.57 acre corner location
- 9' – 10' Ceilings
- Zoned TN-TBA
- Built in 1930; Remodeled in 2009
- Sale Price: ~~\$1,000,000~~ \$997,000 (\$102.83/sf)

Comments: Built in 1930 and renovated in the 2009, this building has ample parking and great frontage on busy division avenue. Building sits on just over half an acre. The TN-TBA zoning allows for many potential uses including live-work facility, multi-family, community center, medical, rehab facilities, churches, schools and much more. Building has been approved for cannabis testing facility / secure transport facility. Building also sits within the SouthTown corridor improvement authority development plan. Buyer/tenant to verify all facts.



For more information, please contact:

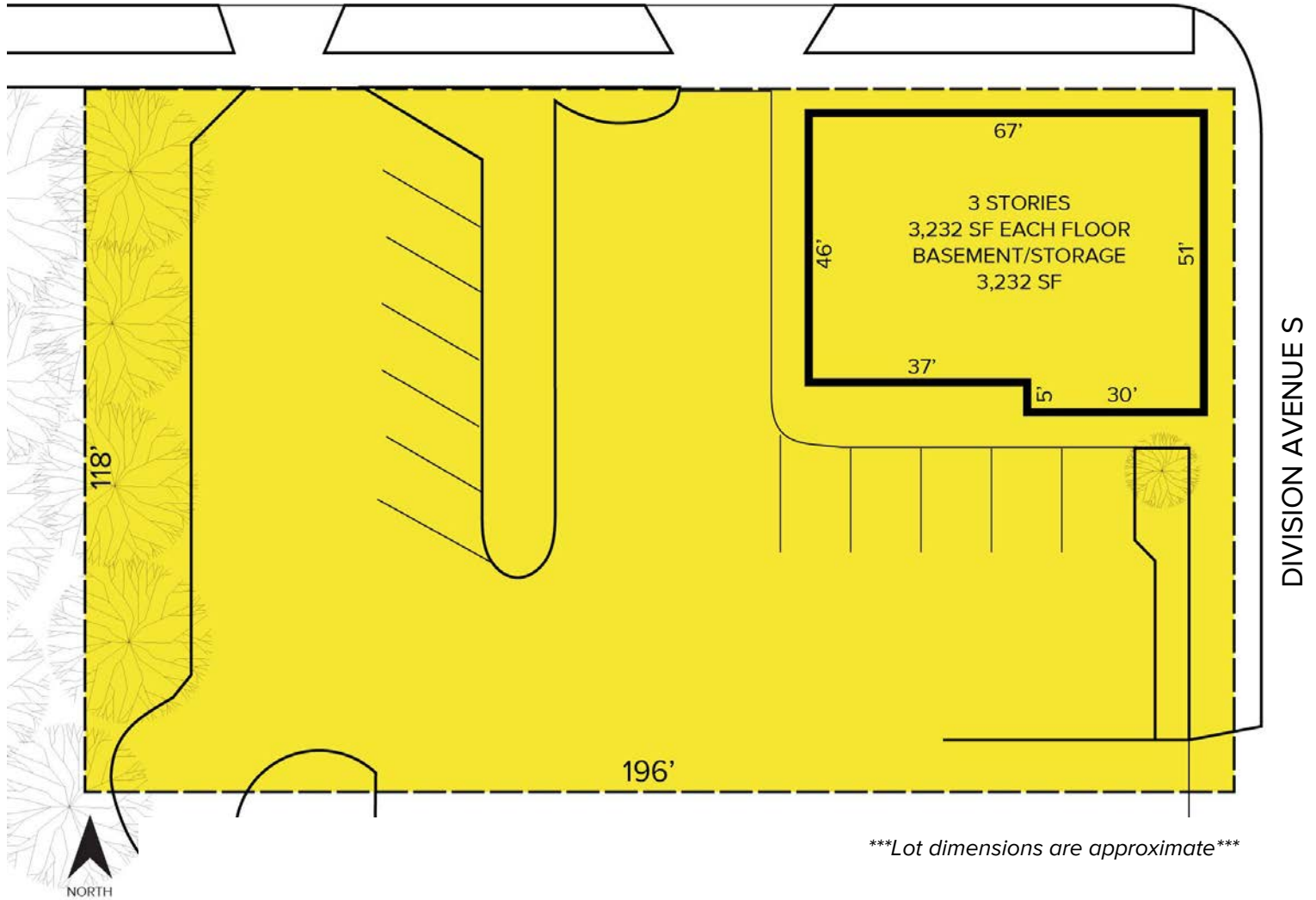
PETER CACHEY
(616) 259 6386
pcachey@signatureassociates.com

JOE RIZQALLAH
(616) 822 6310
jrizzqallah@signatureassociates.com

SIGNATURE ASSOCIATES
1188 East Paris Ave SE, Suite 220
Grand Rapids, MI 49546
www.signatureassociates.com

Site Plan

ALBANY STREET SW



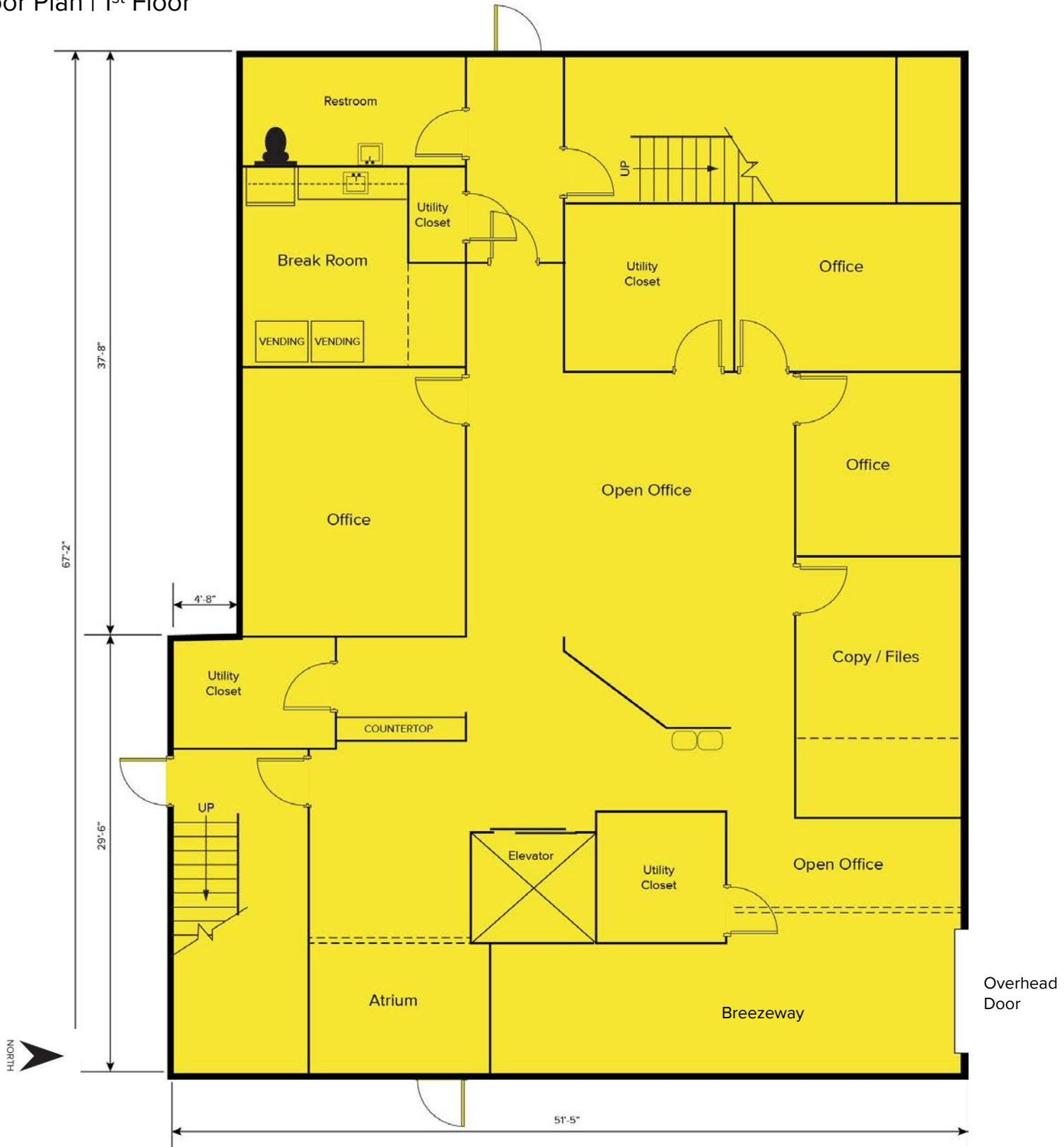
For more information, please contact:

PETER CACHEY
(616) 259 6386
pcachey@signatureassociates.com

JOE RIZQALLAH
(616) 822 6310
jrizqallah@signatureassociates.com

SIGNATURE ASSOCIATES
1188 East Paris Ave SE, Suite 220
Grand Rapids, MI 49546
www.signatureassociates.com

Floor Plan | 1st Floor



For more information, please contact:

PETER CACHEY
(616) 259 6386
pcachey@signatureassociates.com

JOE RIZQALLAH
(616) 822 6310
jrizzqallah@signatureassociates.com

SIGNATURE ASSOCIATES
1188 East Paris Ave SE, Suite 220
Grand Rapids, MI 49546
www.signatureassociates.com

Floor Plan | 2nd Floor



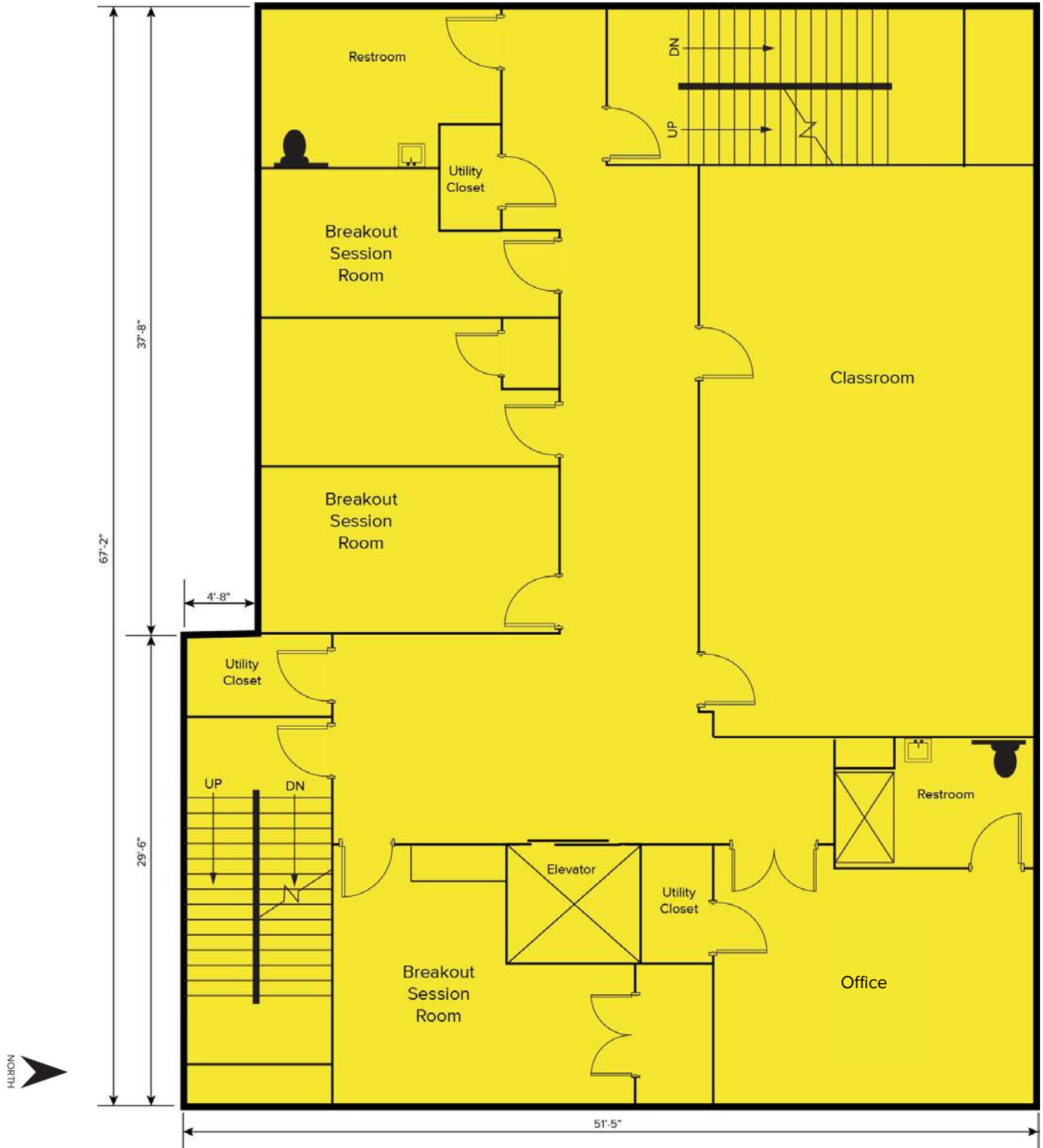
For more information, please contact:

PETER CACHEY
(616) 259 6386
pcachey@signatureassociates.com

JOE RIZQALLAH
(616) 822 6310
jrizzqallah@signatureassociates.com

SIGNATURE ASSOCIATES
1188 East Paris Ave SE, Suite 220
Grand Rapids, MI 49546
www.signatureassociates.com

Floor Plan | 3rd Floor



For more information, please contact:

PETER CACHEY
(616) 259 6386
pcachey@signatureassociates.com

JOE RIZQALLAH
(616) 822 6310
jrizzqallah@signatureassociates.com

SIGNATURE ASSOCIATES
1188 East Paris Ave SE, Suite 220
Grand Rapids, MI 49546
www.signatureassociates.com

1001 Division Avenue S. – Grand Rapids, Michigan

Office for Sale

9,696
Square Feet
AVAILABLE

Interior Photos



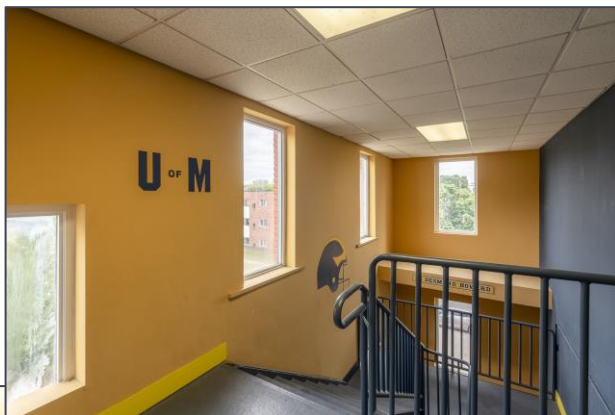
For more information, please contact:

PETER CACHEY
(616) 259 6386
pcachey@signatureassociates.com

JOE RIZQALLAH
(616) 822 6310
jrizqallah@signatureassociates.com

SIGNATURE ASSOCIATES
1188 East Paris Ave SE, Suite 220
Grand Rapids, MI 49546
www.signatureassociates.com

Interior Photos



For more information, please contact:

PETER CACHEY
(616) 259 6386
pcachey@signatureassociates.com

JOE RIZQALLAH
(616) 822 6310
jrizzqallah@signatureassociates.com

SIGNATURE ASSOCIATES
1188 East Paris Ave SE, Suite 220
Grand Rapids, MI 49546
www.signatureassociates.com

1001 Division Avenue S. – Grand Rapids, Michigan
Office for Sale

9,696
Square Feet
AVAILABLE

Aerial



LOOKING SOUTH



LOOKING NORTH

For more information, please contact:

PETER CACHEY
(616) 259 6386
pcachey@signatureassociates.com

JOE RIZQALLAH
(616) 822 6310
jrizzqallah@signatureassociates.com

SIGNATURE ASSOCIATES
1188 East Paris Ave SE, Suite 220
Grand Rapids, MI 49546
www.signatureassociates.com