

# COMMERCIAL LAND AVAILABLE FOR LONG TERM LEASE

**Location:**  
**Westover**  
**Blvd. NE**  
**Moses Lake**  
**Washington**

**486,130 SQFT**



**Contact:**  
**AG Bellevue Properties**  
**(425) 818-5155**  
[andy@agbellevueproperties.com](mailto:andy@agbellevueproperties.com)

# COMMERCIAL LAND AVAILABLE FOR LONG TERM LEASE

**Location:**  
**Westover**  
**Blvd. NE**  
**Moses Lake**  
**Washington**

486,130 SQFT



**Contact:**  
**AG Bellevue Properties**  
**(425) 818-5155**  
**andy@agbellevueproperties.com**

# COMMERCIAL LAND AVAILABLE FOR LONG TERM LEASE

## Property Overview:

- Size: 11.16 Acres (486,130 SQFT)
- Parcel Number: 121956927 (ID: 34341)
- Zone: General Commercial
- Power, Sewer, Water, Fiber Optics  
Telecommunication

## Ideal For:

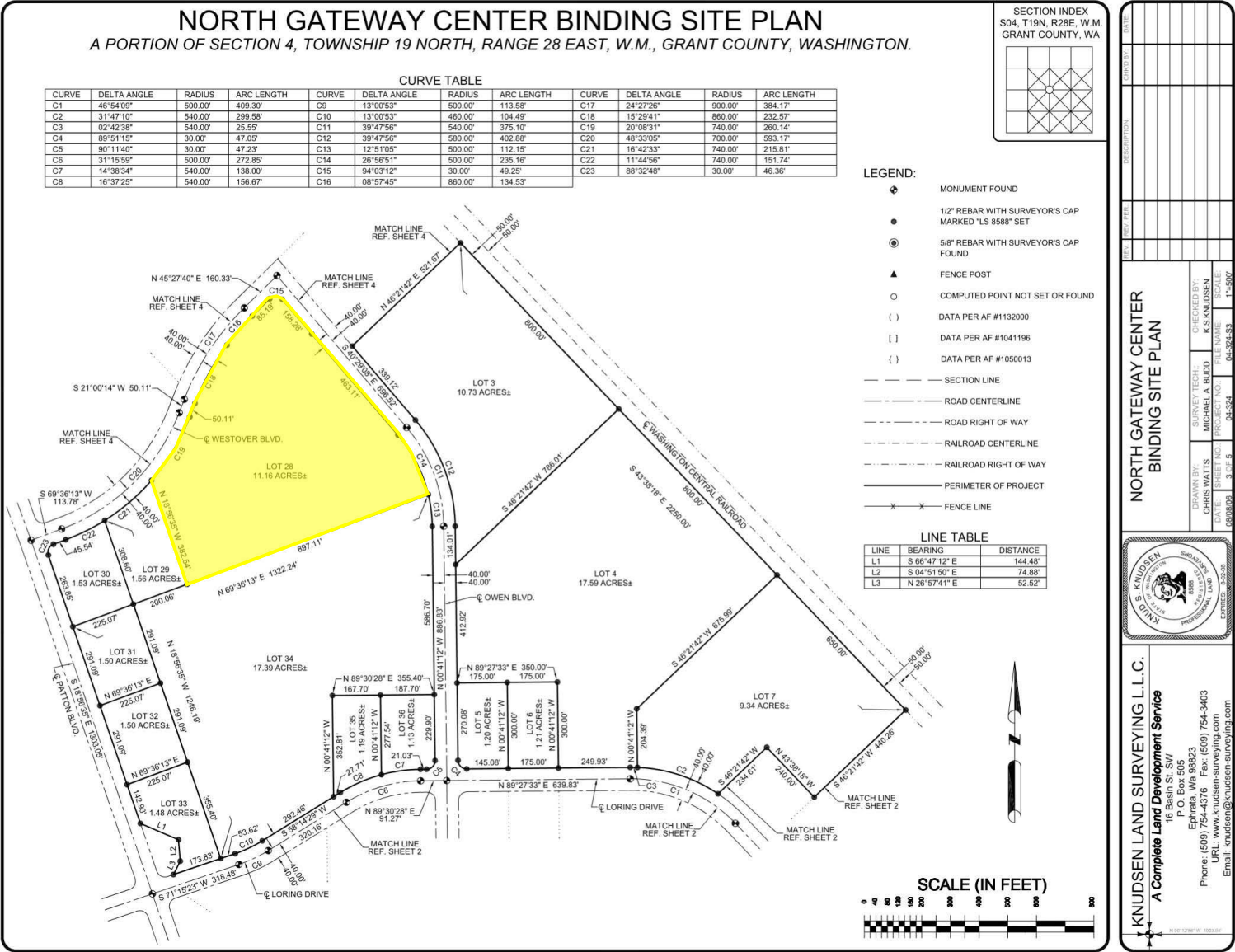
- Distribution & Logistics
- E-Commerce Fulfillment
- Light Manufacturing
- Warehouse
- Retail

## Location Highlights:

- Minutes from I-90 and Highway 17
- Next to Grant County International Airport and Big Bend Community College
- Surrounded by Amazon, Dollar General, Grant Transit Authority, Boeing, Genie/Terex, Asta Real/Fuji, Chemi-con, General Dynamics
- **Grant County Opportunity Zone**

# COMMERCIAL LAND AVAILABLE FOR LONG TERM LEASE

## Site Plan



# COMMERCIAL LAND AVAILABLE FOR LONG TERM LEASE



Westover Blvd. NE



Owen Road NE

# COMMERCIAL LAND AVAILABLE FOR LONG TERM LEASE

## Zoning

