

# 2455 AUTUMNVALE DR



*Industrial  
Condominium  
For Sale*

*1,761 SF*  
AVAILABLE

*\$800,000*  
PURCHASE PRICE

25% office

75% warehouse

14' 7" clear height

One 10' x 10' grade level door

Great freeway access

Close to Milpitas Bart station

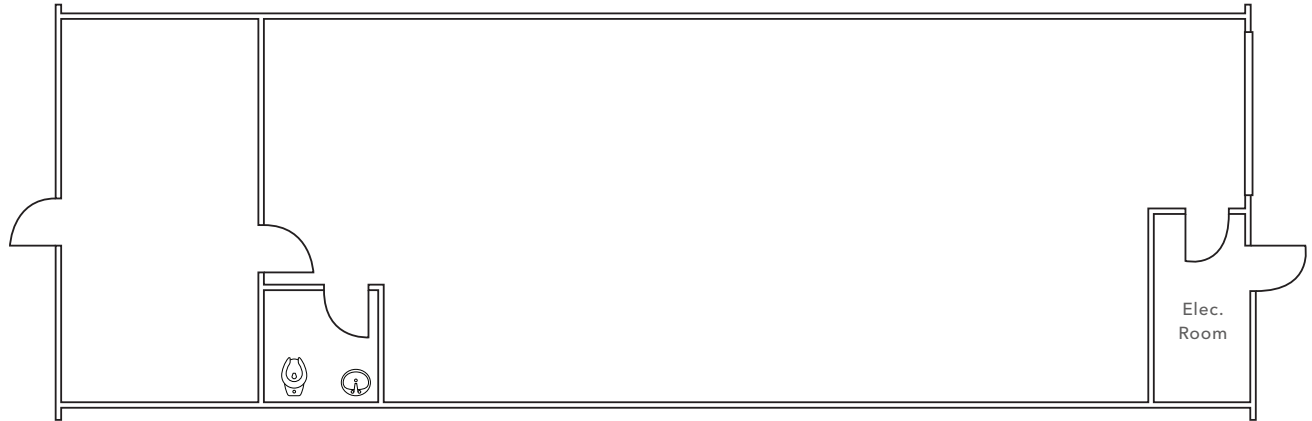
**DERIK BENSON**  
408.588.2332  
derik.benson@kidder.com  
LIC N° 01182654

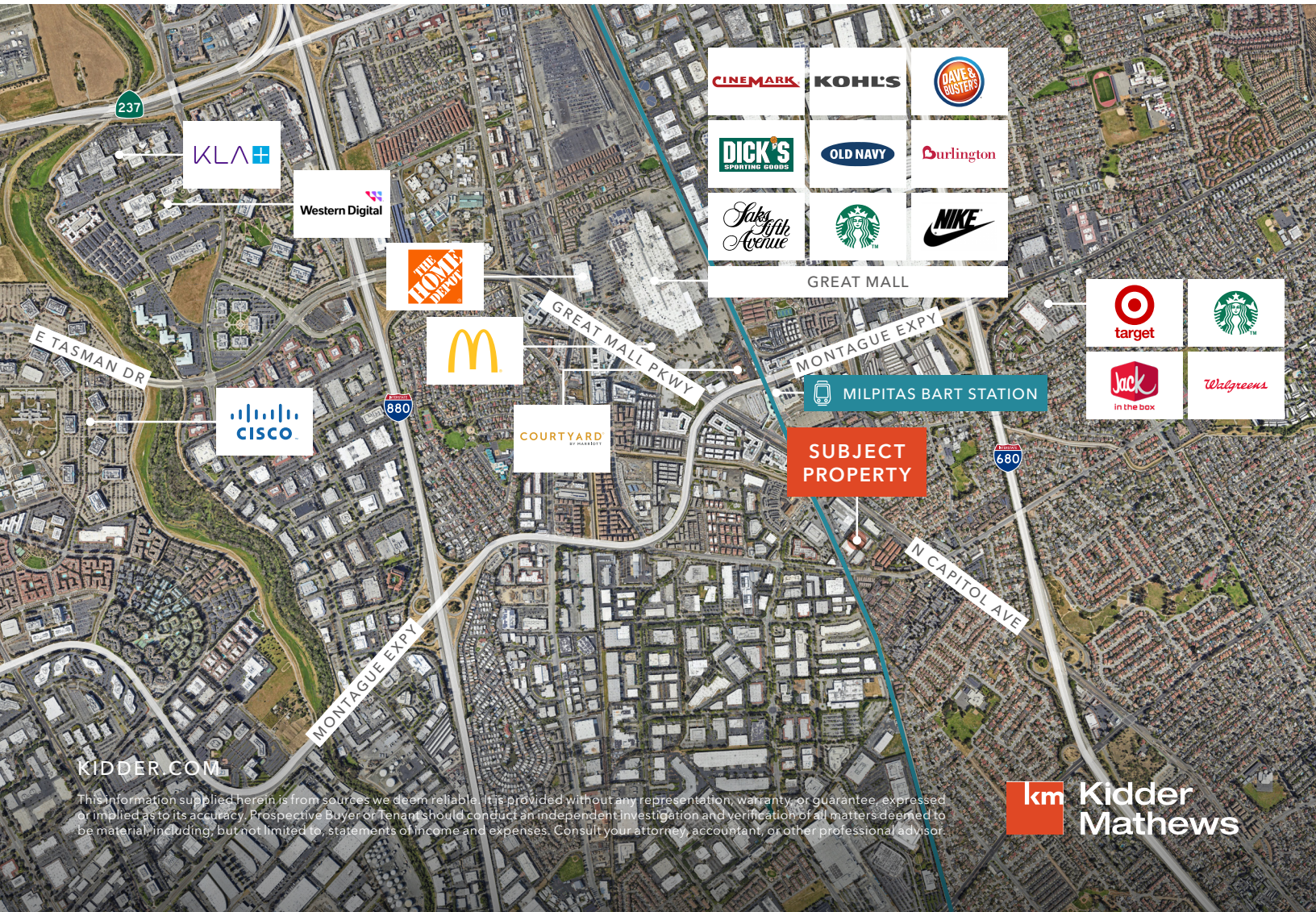
**DAVE GEISSBERGER**  
408.588.2338  
dave.giessberger@kidder.com  
LIC N° 01401887

**KIDDER.COM**

This information supplied herein is from sources we deem reliable. It is provided without any representation, warranty, or guarantee, expressed or implied as to its accuracy. Prospective Buyer or Tenant should conduct an independent investigation and verification of all matters deemed to be material, including, but not limited to, statements of income and expenses. Consult your attorney, accountant, or other professional advisor.

# FLOOR PLAN





This information supplied herein is from sources we deem reliable. It is provided without any representation, warranty, or guarantee, expressed or implied as to its accuracy. Prospective Buyer or Tenant should conduct an independent investigation and verification of all matters deemed to be material, including, but not limited to, statements of income and expenses. Consult your attorney, accountant, or other professional advisor.