

BEAL OFFICE BUILDING

4532 Tamiami Trail East | Naples, FL 34112
Office For Lease



LQ Commercial
REAL ESTATE SERVICES

LQCRE.COM



**CALL FOR
RATES**



**926 SF
SIZE**

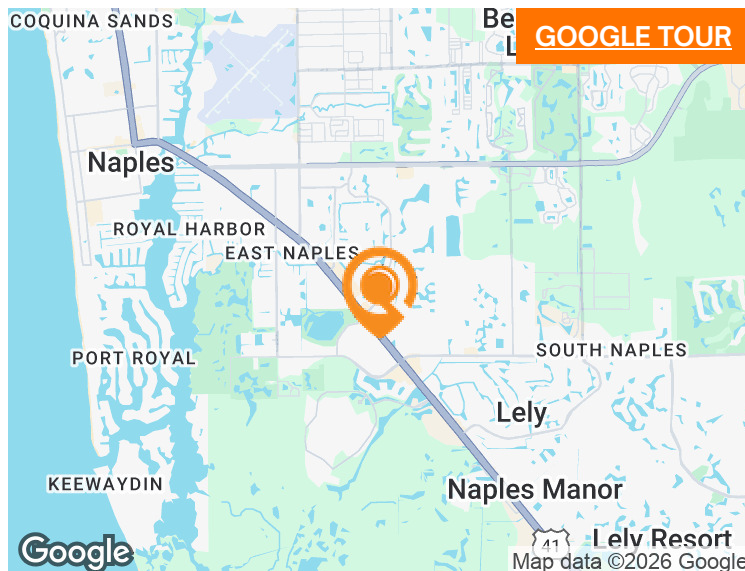


**77 PARKING
SPACES**



**1990 / 2025
BUILT / REN**

- Executive office unit for lease fronting Tamiami Trail East
- Under new ownership & property management
- 98% occupancy
- Property upgrades scheduled for 2025
- 77 parking spaces (1/127 Usable SF)
- Monument signage opportunity available
- Located in growing East Naples, minutes from 5th Ave S Third Street South and Tin City
- Tamiami Trail AADT: 43,255 CPD



PROPERTIES.LQCRE.COM/BEAL-OFFICE-BUILDING



**TOTAL POPULATION
102,691**



**AVERAGE HH INCOME
\$139,474**



**# EMPLOYEES
59,778**



3555 Kraft Rd #260
Naples, FL 34105
LQCRE.COM

Edward Larsen
Associate

D: 239.494.3659

C: 239.200.8194

elarsen@lqcre.com

Nick Matson
Associate

D: 239.275.4922 x408

C: 239.351.0137

nmatson@lqcre.com

Information obtained from owner(s) or other sources deemed reliable. We have no reason to doubt its accuracy, but cannot guarantee it. All properties subject to change or withdrawal without notice.

BEAL OFFICE BUILDING

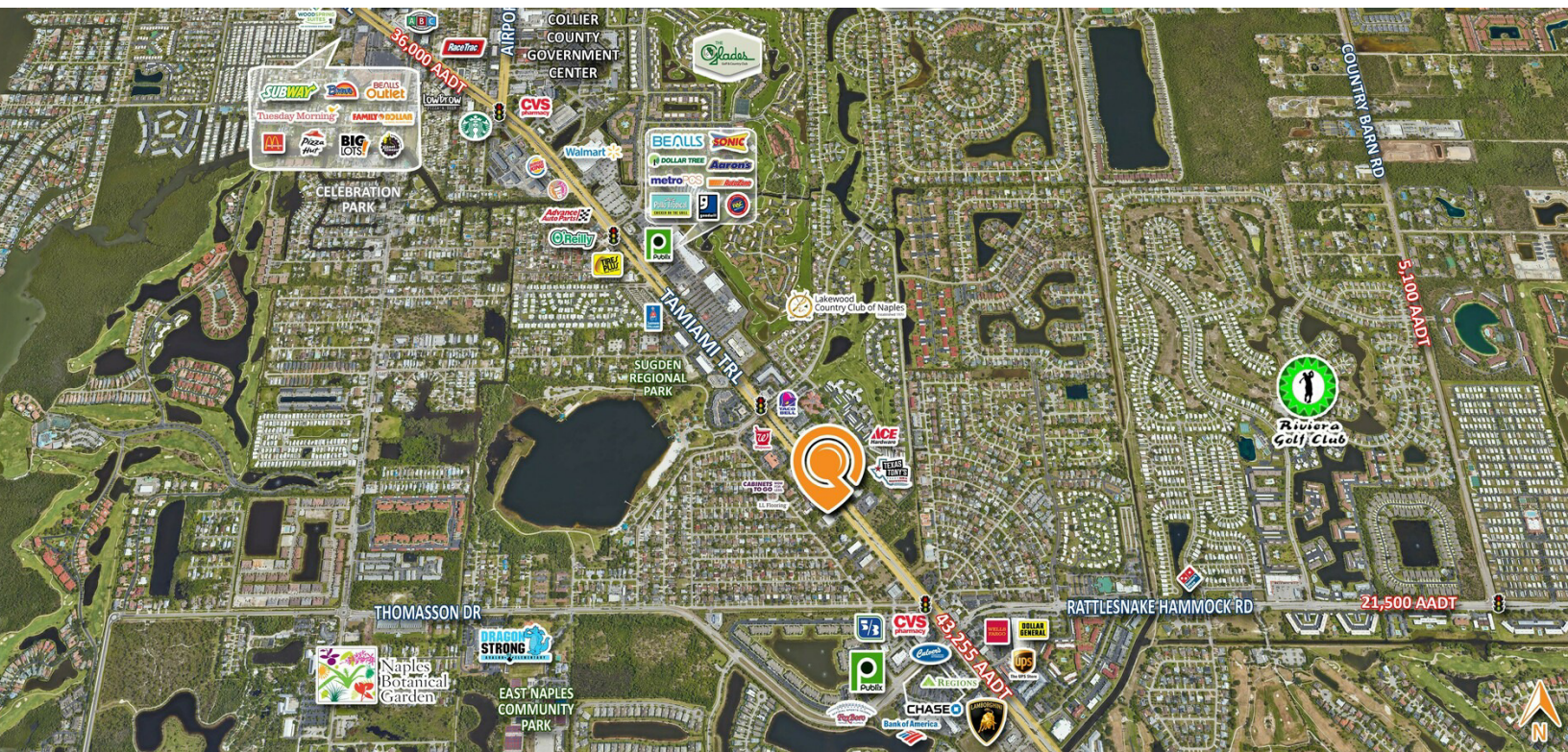
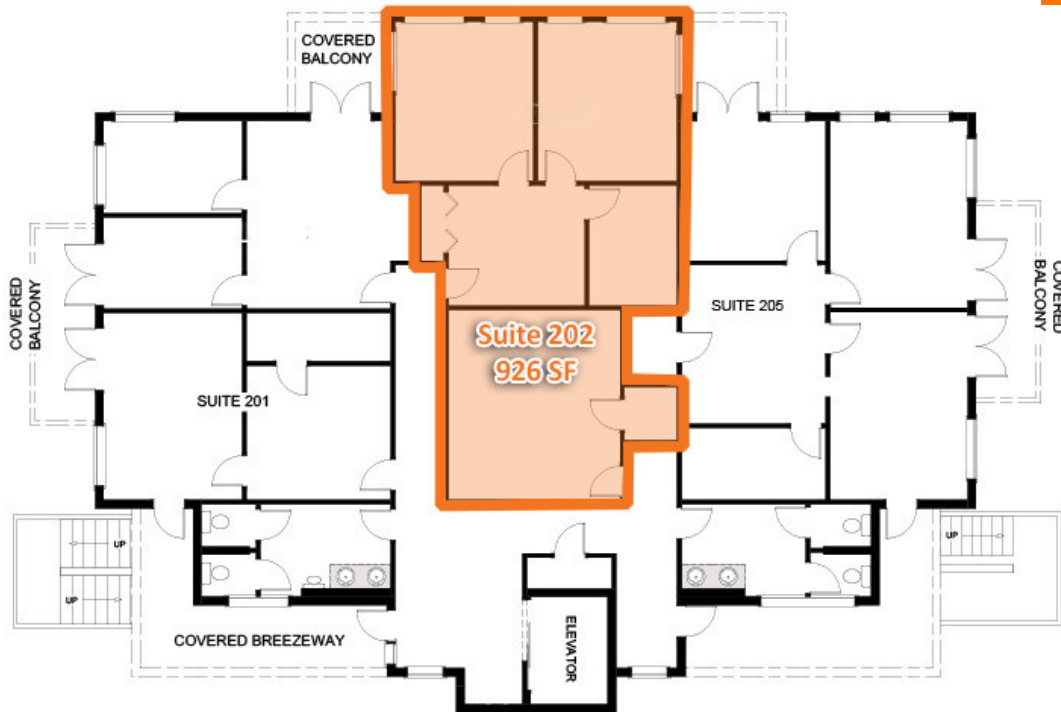
4532 Tamiami Trail East | Naples, FL 34112

Office For Lease



LQ Commercial
REAL ESTATE SERVICES

LQCRE.COM



LQ Commercial
REAL ESTATE SERVICES

3555 Kraft Rd #260
Naples, FL 34105
LQCRE.COM

Edward Larsen
Associate

D: 239.494.3659
C: 239.200.8194

elarsen@lqcre.com

Nick Matson
Associate

D: 239.275.4922 x408
C: 239.351.0137

nmatson@lqcre.com

Information obtained from owner(s) or other sources deemed reliable. We have no reason to doubt its accuracy, but cannot guarantee it. All properties subject to change or withdrawal without notice.

BEAL OFFICE BUILDING

4532 Tamiami Trail East | Naples, FL 34112

Office For Lease



LQ Commercial
REAL ESTATE SERVICES

LQCRE.COM



LQ Commercial
REAL ESTATE SERVICES

3555 Kraft Rd #260

Naples, FL 34105

LQCRE.COM

Edward Larsen

Associate

D: 239.494.3659

C: 239.200.8194

elarsen@lqcre.com

Nick Matson

Associate

D: 239.275.4922 x408

C: 239.351.0137

nmatson@lqcre.com

Information obtained from owner(s) or other sources deemed reliable. We have no reason to doubt its accuracy, but cannot guarantee it. All properties subject to change or withdrawal without notice.