

AVAILABLE FOR BUILD TO SUIT | GROUND LEASE | LEASE



THE WOODMONT COMPANY



## GARDEN CITY PLAZA

2310 East Kansas Avenue | Garden City, Kansas 67826

GRANT GARY  
ggary@woodmont.com  
817.732.4000

BRITTON LANKFORD  
blankford@woodmont.com  
214.546.2622

The information contained herein was obtained from sources deemed reliable; however, no guarantees, warranties or representations as to the completeness or accuracy thereof. The presentation of this real estate information is subject to errors; omissions; change of price; prior sale or lease; or withdrawal without notice.

WOODMONT.COM

## PROPERTY INFORMATION

2310 EAST KANSAS AVENUE | GARDEN CITY, KANSAS 67826



## AREA RETAILERS & RESTAURANTS



THE WOODMONT COMPANY

## LOCATION

2310 East Kansas Avenue | Garden City, Kansas  
67826

## HIGHLIGHTS

- 0.60 AC pad For Sale, GL, BTS
- 0.88 AC pad retail building For Lease, 5,000 SF divisible with drive-thru
- +/- 33,890 SF for lease adjacent to Burlington & Kohl's
- 2 dedicated full-access curb cuts
- Pylon signage available
- Across from Target which is the only Target in approx. 194 miles

## DEMOGRAPHICS

Drive Time	5 Min	10 Min	15 Min
Population	20,370	31,981	33,679
Avg. HH Income	\$99,036	\$100,210	\$99,853



# PROPERTY AERIAL



THE WOODMONT COMPANY

2310 EAST KANSAS AVENUE | GARDEN CITY, KANSAS 67826



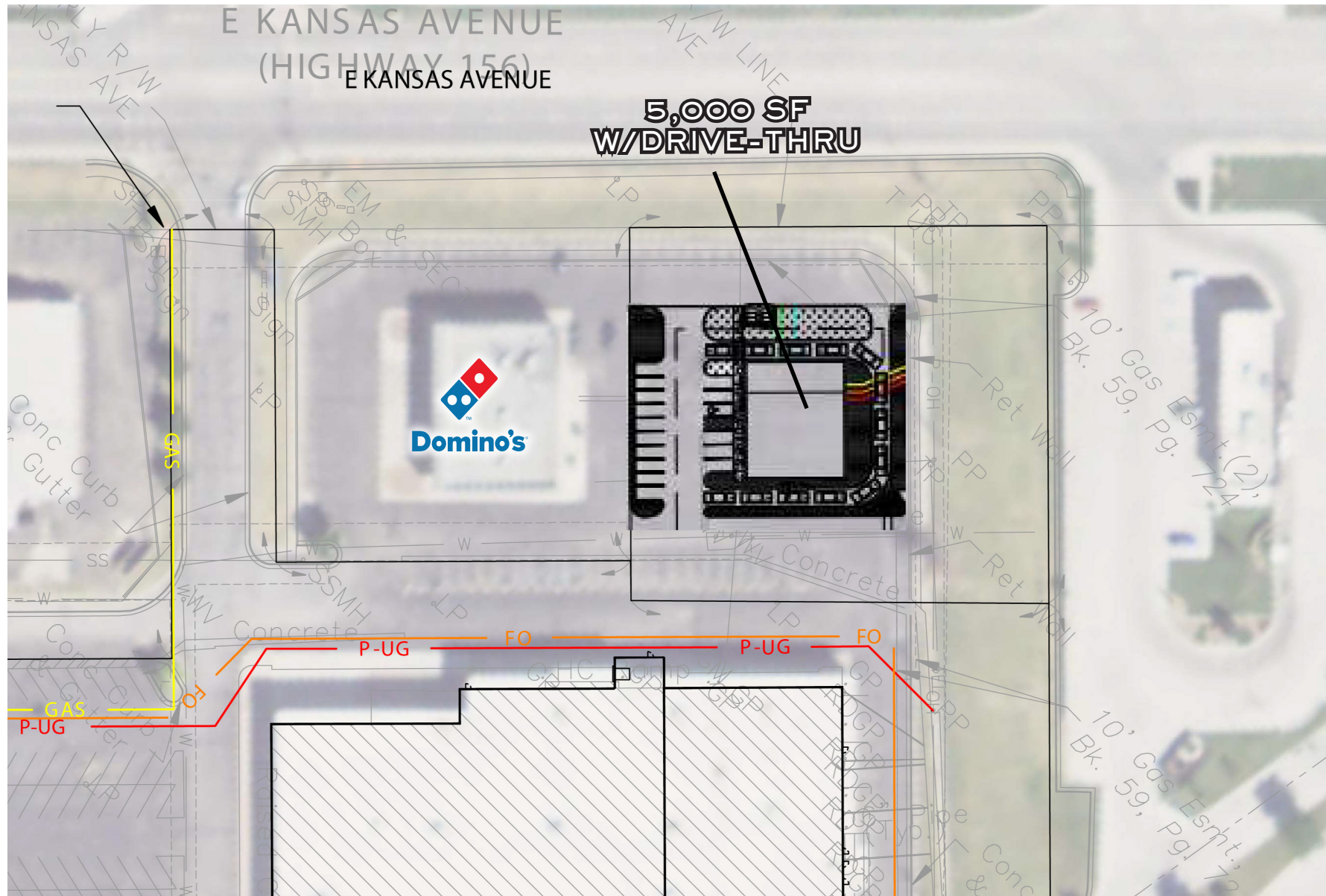


# PROPOSED PAD SITE



THE WOODMONT COMPANY

2310 EAST KANSAS AVENUE | GARDEN CITY, KANSAS 67826





## FRONT ELEVATION



THE WOODMONT COMPANY

2310 EAST KANSAS AVENUE | GARDEN CITY, KANSAS 67826





## PROPERTY IMAGES



THE WOODMONT COMPANY

2310 EAST KANSAS AVENUE | GARDEN CITY, KANSAS 67826



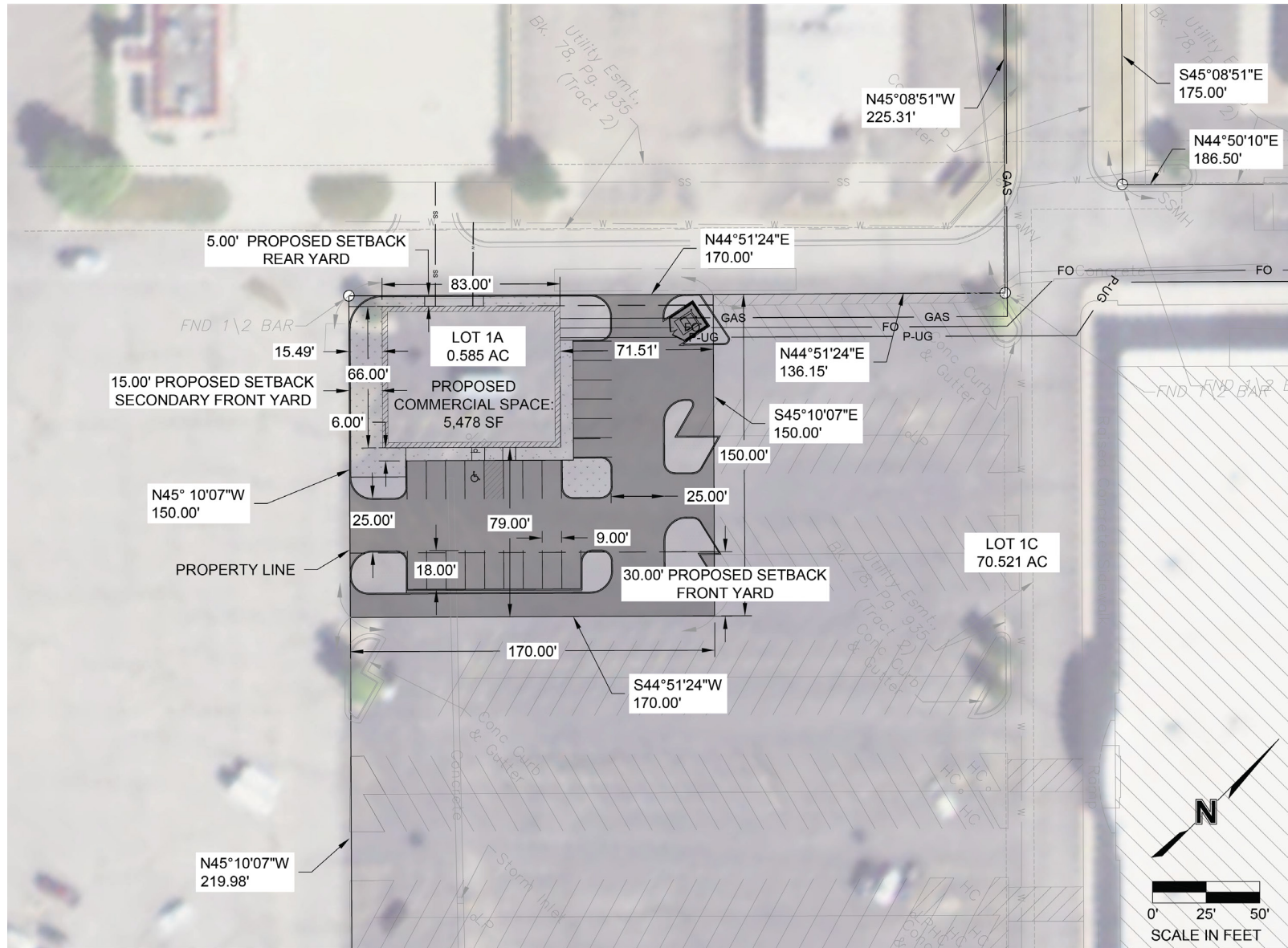


# PROPOSED PAD SITE 2



THE WOODMONT COMPANY

2310 EAST KANSAS AVENUE | GARDEN CITY, KANSAS 67826



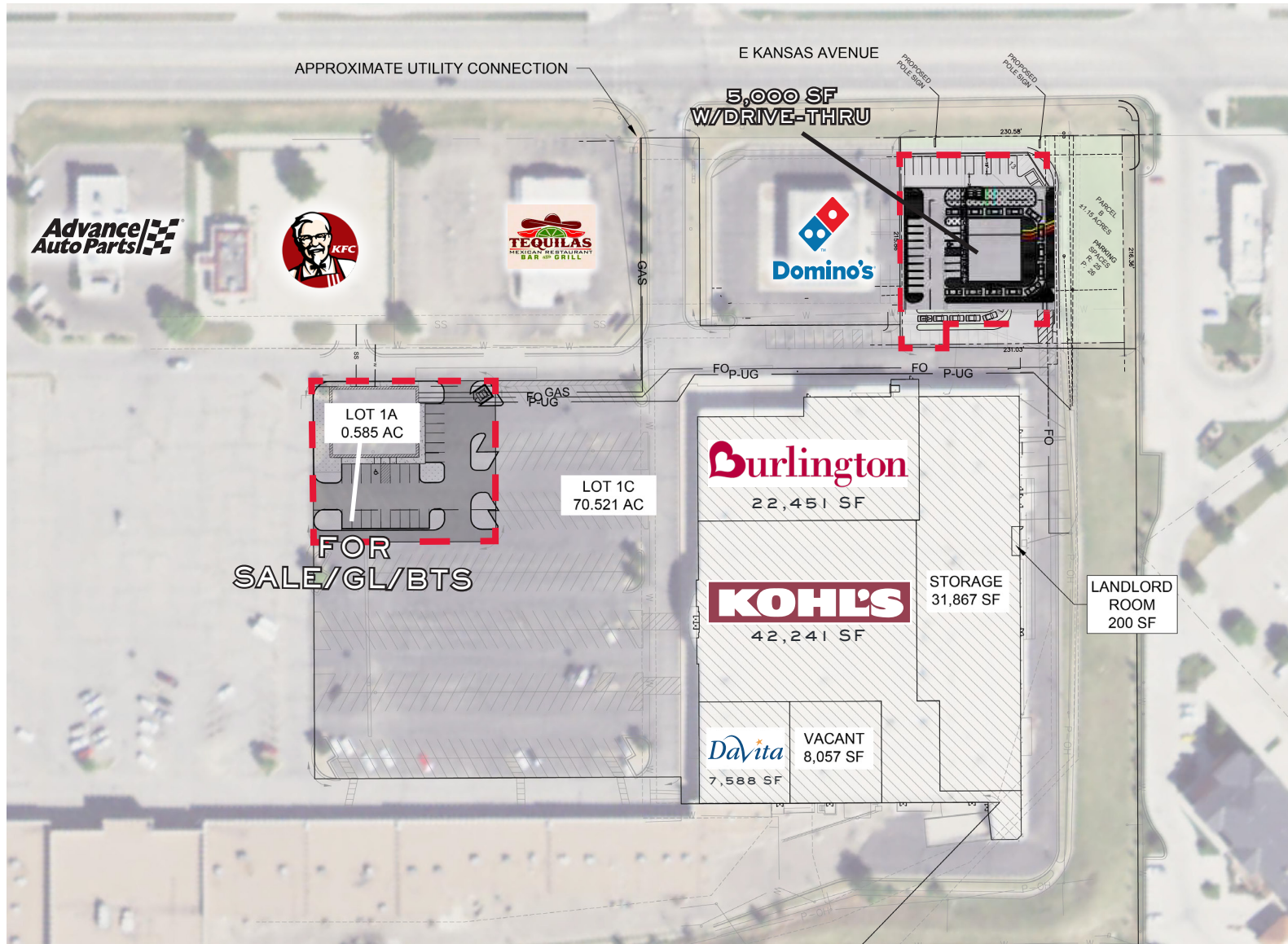


## PROPOSED PAD SITE 2

2310 EAST KANSAS AVENUE | GARDEN CITY, KANSAS 67826



THE WOODMONT COMPANY



The information contained herein was obtained from sources deemed reliable; however, no guarantees, warranties or representations as to the completeness or accuracy thereof. The presentation of this real estate information is subject to errors; omissions; change of price; prior sale or lease; or withdrawal without notice.



# PROPERTY AERIAL



THE WOODMONT COMPANY

2310 EAST KANSAS AVENUE | GARDEN CITY, KANSAS 67826



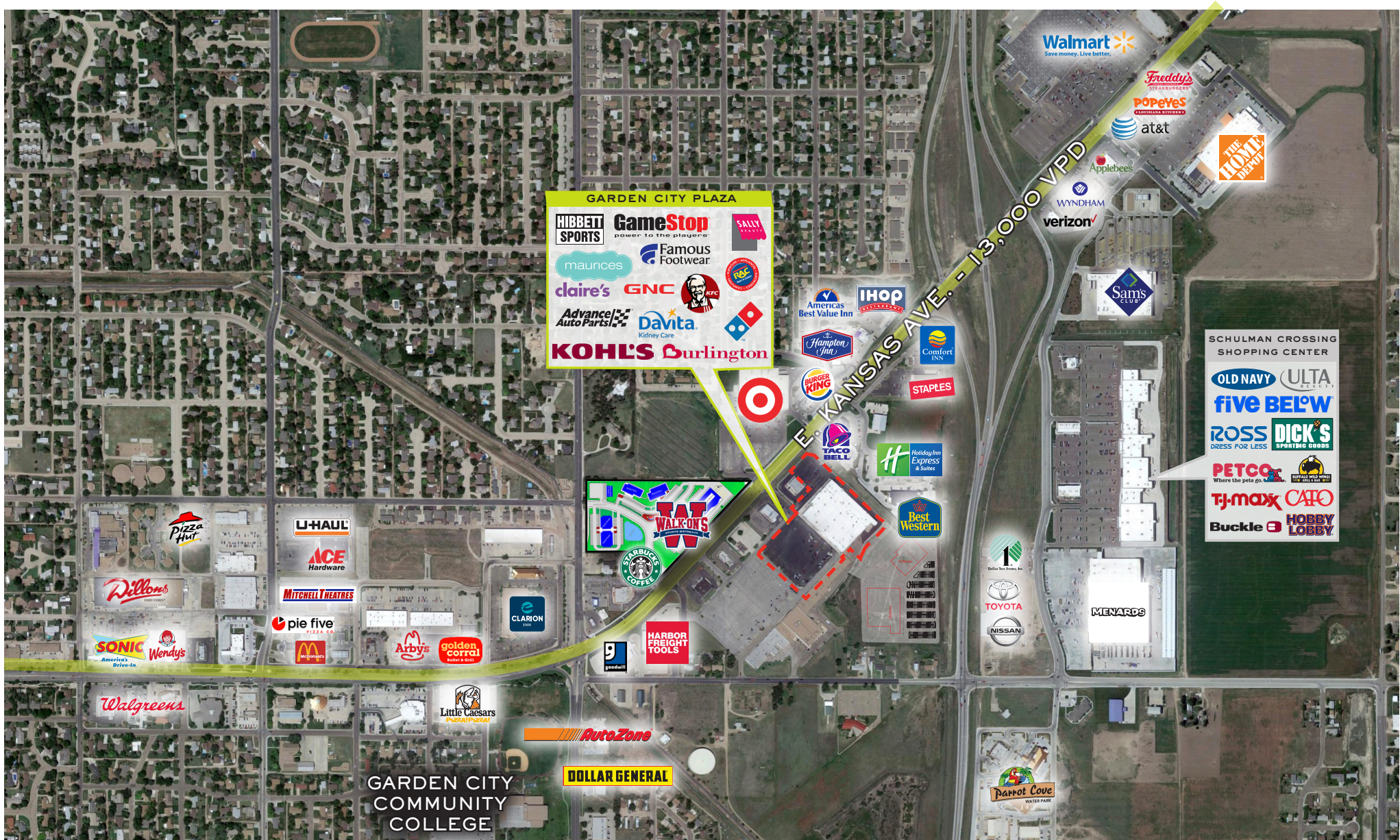


# PROPERTY AERIAL



THE WOODMONT COMPANY

2310 EAST KANSAS AVENUE | GARDEN CITY, KANSAS 67826



The information contained herein was obtained from sources deemed reliable; however, no guarantees, warranties or representations as to the completeness or accuracy thereof. The presentation of this real estate information is subject to errors; omissions; change of price; prior sale or lease; or withdrawal without notice.

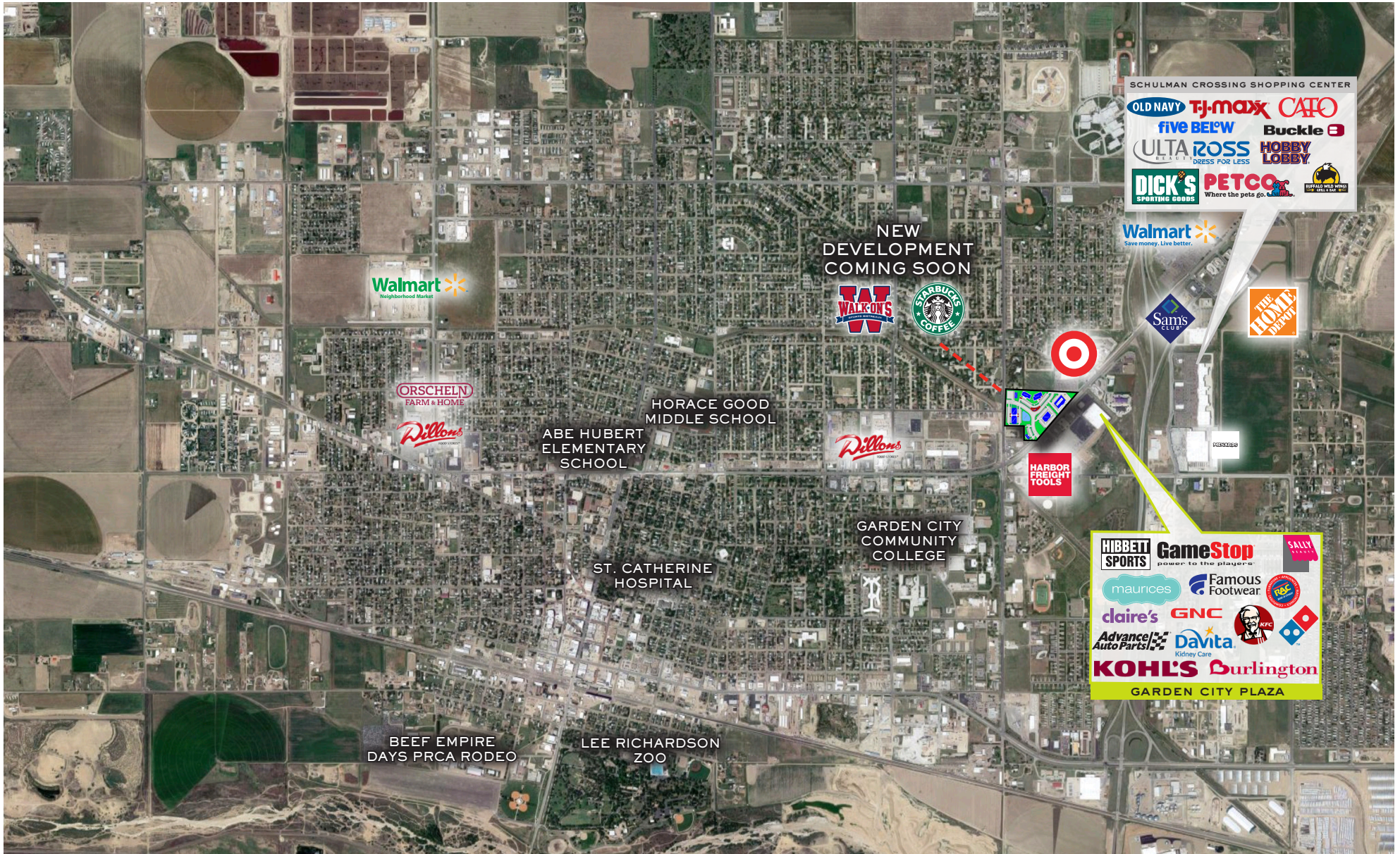


# MARKET AERIAL



THE WOODMONT COMPANY

2310 EAST KANSAS AVENUE | GARDEN CITY, KANSAS 67826



The information contained herein was obtained from sources deemed reliable; however, no guarantees, warranties or representations as to the completeness or accuracy thereof. The presentation of this real estate information is subject to errors; omissions; change of price; prior sale or lease; or withdrawal without notice.

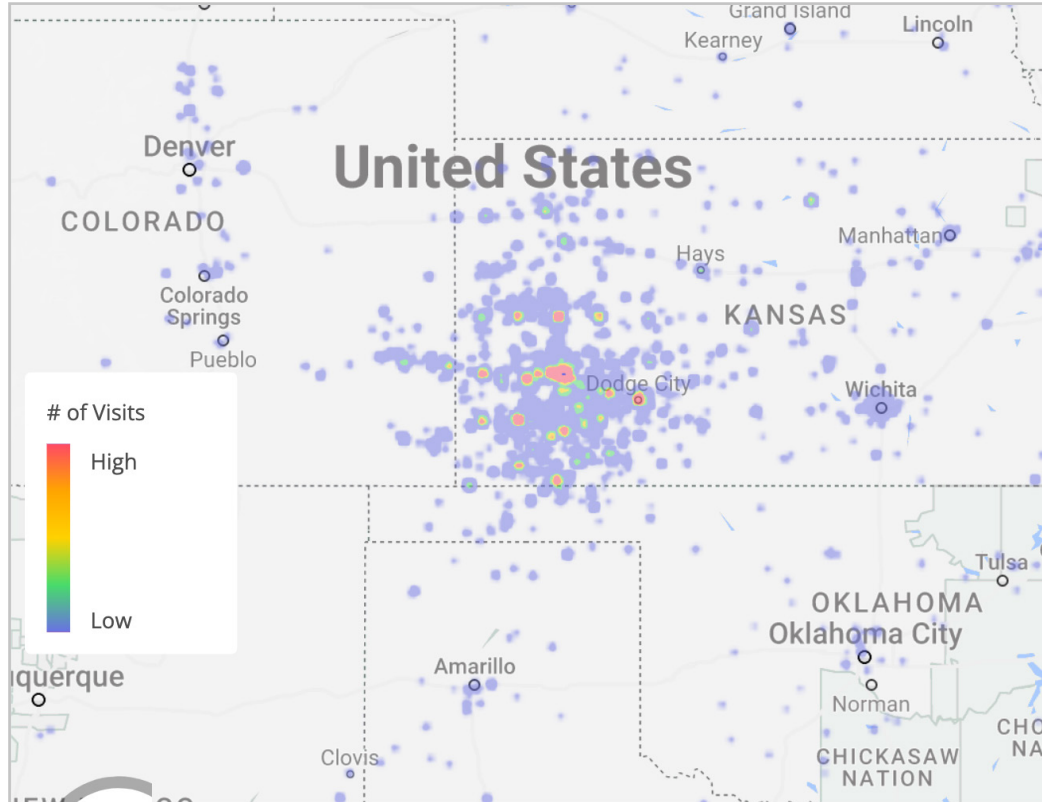


## TRADE AREA

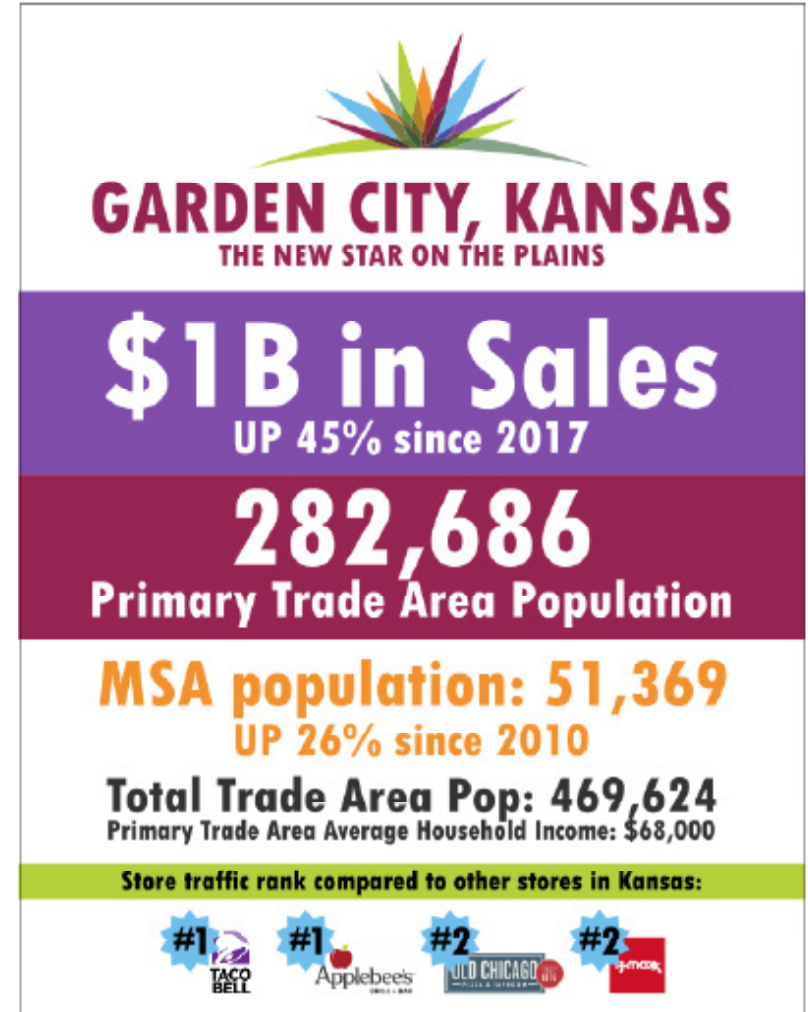
2310 EAST KANSAS AVENUE | GARDEN CITY, KANSAS 67826



THE WOODMONT COMPANY



Garden City Plaza / 2214 E Kansas Ave, Garden City, KS 67846 | Based on Home Location, by Visits | Min. Visits: 2 | Sep 1st 2023 to Aug 31st 2024 | Home locations are obfuscated for privacy and randomly placed within census block. They do not represent actual home addresses. Data provided by Placer Labs Inc. ([www.placer.ai](http://www.placer.ai))





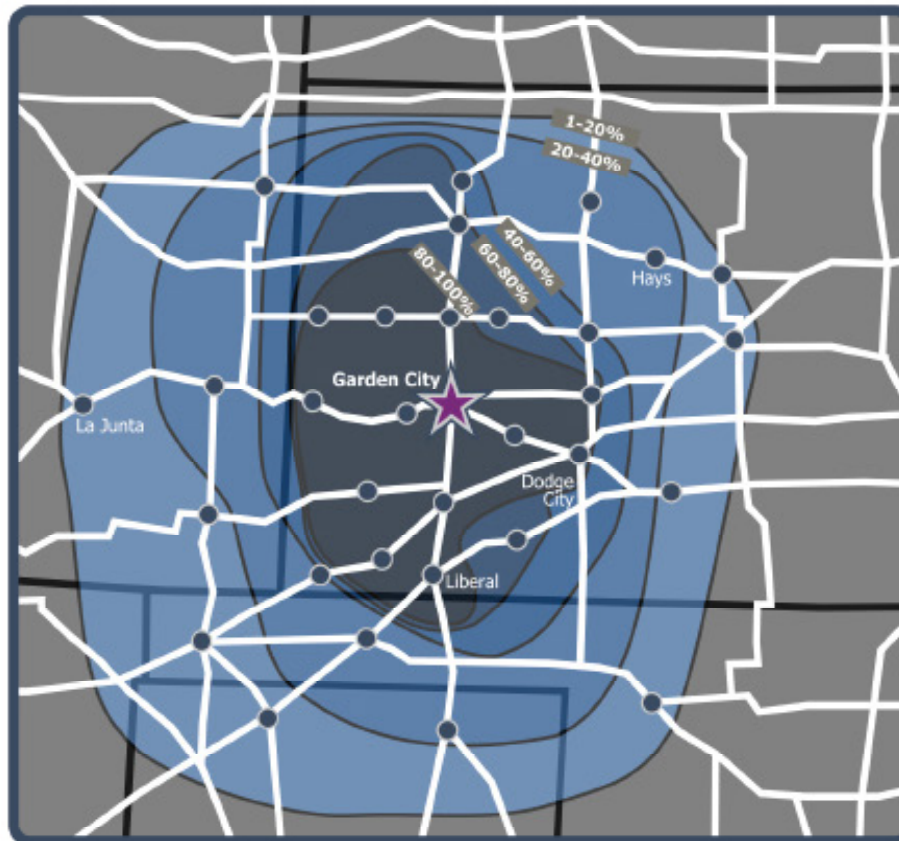
## TRADE AREA

2310 EAST KANSAS AVENUE | GARDEN CITY, KANSAS 67826



THE WOODMONT COMPANY

# Garden City, Kansas measured total Trade Area



**μSA Population**  
**51,369**

**Trade Area Pop.**  
**282,686**

**Trade Area**  
**Personal Income**  
**\$10.2 Billion**



# INFORMATION ABOUT BROKERAGE SERVICES



THE WOODMONT COMPANY

Texas law requires all real estate license holders to give the following information about brokerage services to prospective buyers, tenants, sellers and landlords.

## TYPES OF REAL ESTATE LICENSE HOLDERS:

- A **BROKER** is responsible for all brokerage activities, including acts performed by sales agents sponsored by the broker.
- A **SALES AGENT** must be sponsored by a broker and works with clients on behalf of the broker.

## A BROKER'S MINIMUM DUTIES REQUIRED BY LAW (A client is the person or party that the broker represents):

- Put the interests of the client above all others, including the broker's own interests;
- Inform the client of any material information about the property or transaction received by the broker;
- Answer the client's questions and present any offer to or counter-offer from the client; and
- Treat all parties to a real estate transaction honestly and fairly.

## A LICENSE HOLDER CAN REPRESENT A PARTY IN A REAL ESTATE TRANSACTION:

**AS AGENT FOR OWNER (SELLER/LANDLORD):** The broker becomes the property owner's agent through an agreement with the owner, usually in a written listing to sell or property management agreement. An owner's agent must perform the broker's minimum duties above and must inform the owner of any material information about the property or transaction known by the agent, including information disclosed to the agent or subagent by the buyer or buyer's agent. **An owner's agent fees are not set by law and are fully negotiable.**

**AS AGENT FOR BUYER/TENANT:** The broker becomes the buyer/tenant's agent by agreeing to represent the buyer, usually through a written representation agreement. A buyer's agent must perform the broker's minimum duties above and must inform the buyer of any material information about the property or transaction known by the agent, including information disclosed to the agent by the seller or seller's agent. **A buyer/tenant's agent fees are not set by law and are fully negotiable.**

- **AS AGENT FOR BOTH - INTERMEDIARY:** To act as an intermediary between the parties the broker must first obtain the written agreement of *each party* to the transaction. The written agreement must state who will pay the broker and, in conspicuous bold or underlined print, set forth the broker's obligations as an intermediary. A broker who acts as an intermediary:
  - Must treat all parties to the transaction impartially and fairly;
  - May, with the parties' written consent, appoint a different license holder associated with the broker to each party (owner and buyer) to communicate with, provide opinions and advice to, and carry out the instructions of each party to the transaction.
  - Must not, unless specifically authorized in writing to do so by the party, disclose:
    - that the owner will accept a price less than the written asking price;
    - that the buyer/tenant will pay a price greater than the price submitted in a written offer; and
    - any confidential information or any other information that a party specifically instructs the broker in writing not to disclose, unless required to do so by law.

**AS SUBAGENT:** A license holder acts as a subagent when aiding a buyer in a transaction without an agreement to represent the buyer. A subagent can assist the buyer but does not represent the buyer and must place the interests of the owner first.

## TO AVOID DISPUTES, ALL AGREEMENTS BETWEEN YOU AND A BROKER SHOULD BE IN WRITING AND CLEARLY ESTABLISH:

- The broker's duties and responsibilities to you, and your obligations under the representation agreement.
- Who will pay the broker for services provided to you, when payment will be made and how the payment will be calculated.

**LICENSE HOLDER CONTACT INFORMATION:** This notice is being provided for information purposes. It does not create an obligation for you to use the broker's services. Please acknowledge receipt of this notice below and retain a copy for your records.

THE WOODMONT COMPANY	302455	<a href="mailto:contact@woodmont.com">contact@woodmont.com</a>	817-732-4000
Broker Firm Name	License No.	Email	Phone
STEPHEN COSLIK	237614	<a href="mailto:contact@woodmont.com">contact@woodmont.com</a>	817-732-4000
Designated Broker of Firm	License No.	Email	Phone



Regulated by the Texas Real Estate Commission

2025 - Information available at [www.trec.texas.gov](http://www.trec.texas.gov)