

**OFFICE PROPERTY // FOR LEASE**

# LAW OFFICE AVAILABLE FOR LEASE IN DOWNTOWN ROYAL OAK

1022 SOUTH WASHINGTON AVE  
ROYAL OAK, MI 48067



- Law Office For Lease
- Updated Interior
- Private Parking
- Great location on Washington Ave @ Woodward
- Highly walkable area



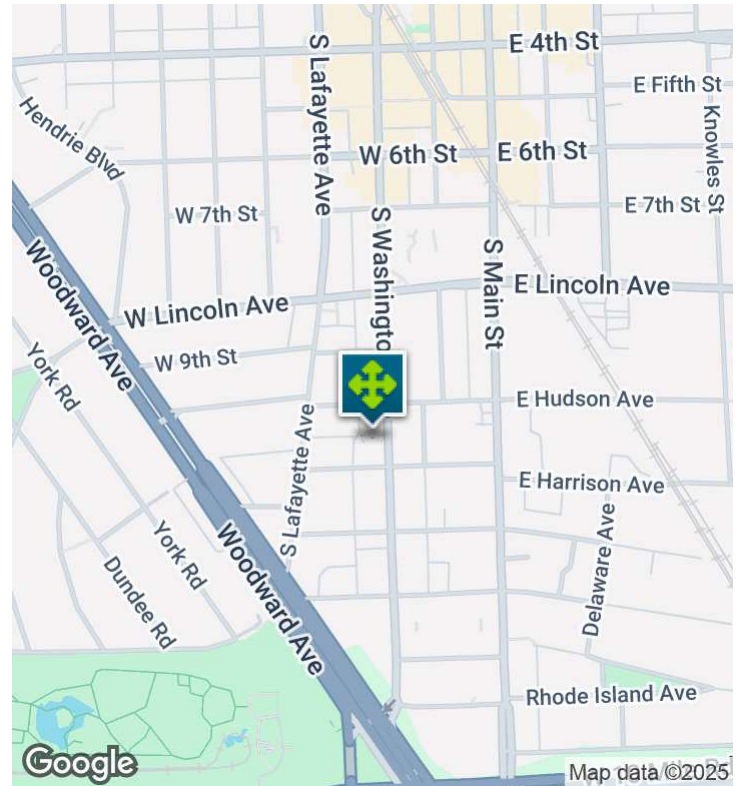
**P.A. COMMERCIAL**  
Corporate & Investment Real Estate

26555 Evergreen Road, Suite 1500  
Southfield, MI 48076  
248.358.0100  
[pacommercial.com](http://pacommercial.com)

We obtained the information above from sources we believe to be reliable. However, we have not verified its accuracy and make no guarantee, warranty or representation about it. It is submitted subject to the possibility of errors, omissions, change of price, rental or other conditions, prior sale, lease or financing, or withdrawal without notice. We include projections, opinions, assumptions or estimates for example only, and they may not represent current, past or future performance of the property. You and your tax and legal advisors should conduct your own investigation of the property and transaction.

# 1022 SOUTH WASHINGTON AVE, ROYAL OAK, MI 48067 // FOR LEASE

## EXECUTIVE SUMMARY



Lease Rate	<b>\$600.00 PER MONTH (GROSS)</b>
------------	-----------------------------------

### OFFERING SUMMARY

Building Size:	1,400 SF
Available SF:	177 SF
Lot Size:	0.17 Acres
Year Built:	1960
Zoning:	BI
Market:	Detroit
Submarket:	Royal Oak

### PROPERTY OVERVIEW

Professional law office immediately available minutes from Woodward Ave in downtown Royal Oak. Individual private office space is hard to find in this highly desirable area of metro Detroit. Easy access and reasonable rental terms.

**\*\*All law specialties are welcome except Estate & Elder Law.\*\***

### LOCATION OVERVIEW

Downtown Royal Oak - the center of metro Detroit with a walkable downtown and convenient access to I-696 and I-75. This property is located in a suburban area known for restaurants, boutique shops, and an attractive lifestyle.

### PROPERTY HIGHLIGHTS

- Law Office For Lease
- Updated Interior
- Private Parking
- Great location on Washington Ave @ Woodward
- Highly walkable area



**P.A. COMMERCIAL**  
Corporate & Investment Real Estate

We obtained the information above from sources we believe to be reliable. However, we have not verified its accuracy and make no guarantee, warranty or representation about it. It is submitted subject to the possibility of errors, omissions, change of price, rental or other conditions, prior sale, lease or financing, or withdrawal without notice. We include projections, opinions, assumptions or estimates for example only, and they may not represent current, past or future performance of the property. You and your tax and legal advisors should conduct your own investigation of the property and transaction.

**Dan Blugerman, CCIM** SENIOR ASSOCIATE  
D: 248.987.5418 | C: 248.987.5418  
dan@pacommercial.com



1022 SOUTH WASHINGTON AVE, ROYAL OAK, MI 48067 // FOR LEASE

## ADDITIONAL PHOTOS



**P.A. COMMERCIAL**  
Corporate & Investment Real Estate

We obtained the information above from sources we believe to be reliable. However, we have not verified its accuracy and make no guarantee, warranty or representation about it. It is submitted subject to the possibility of errors, omissions, change of price, rental or other conditions, prior sale, lease or financing, or withdrawal without notice. We include projections, opinions, assumptions or estimates for example only, and they may not represent current, past or future performance of the property. You and your tax and legal advisors should conduct your own investigation of the property and transaction.

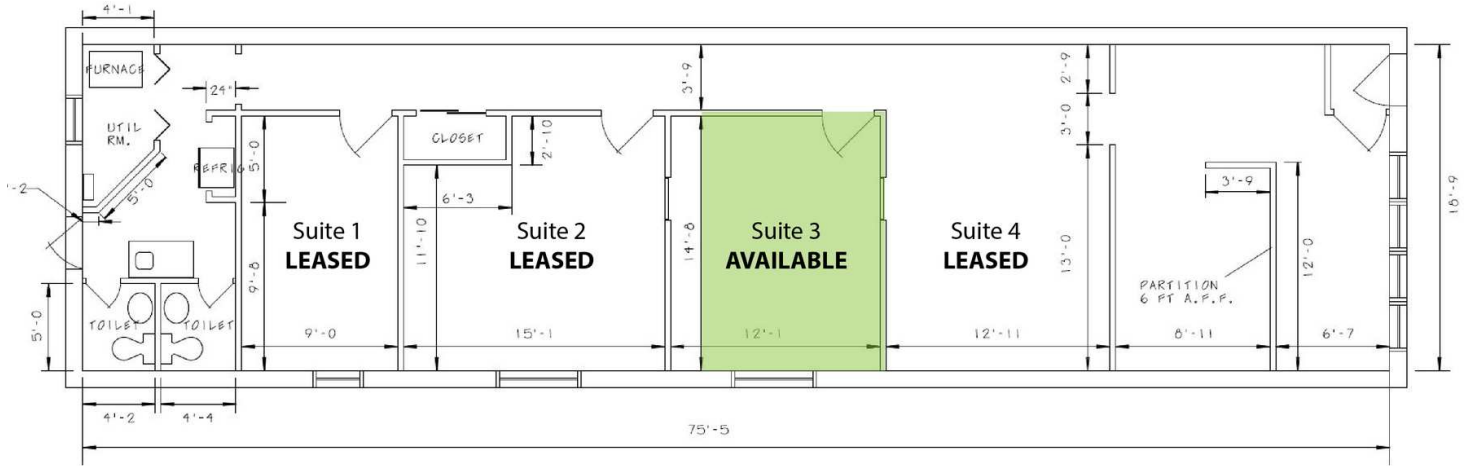
WE HAVE  
SPACE  
AVAILABLE  
FOR YOU.

**Dan Blugerman, CCIM** SENIOR ASSOCIATE

**D:** 248.987.5418 | **C:** 248.987.5418

[dan@pacommercial.com](mailto:dan@pacommercial.com)

# 1022 SOUTH WASHINGTON AVE, ROYAL OAK, MI 48067 // FOR LEASE LEASE SPACES



## LEASE INFORMATION

Lease Type:	Gross	Lease Term:	Negotiable
Total Space:	177 SF	Lease Rate:	\$600.00 per month

## AVAILABLE SPACES

SUITE	TENANT	SIZE (SF)	LEASE TYPE	LEASE RATE	DESCRIPTION
Suite 3	Available	177 SF	Gross	\$600 per month	-



## RETAILER MAP

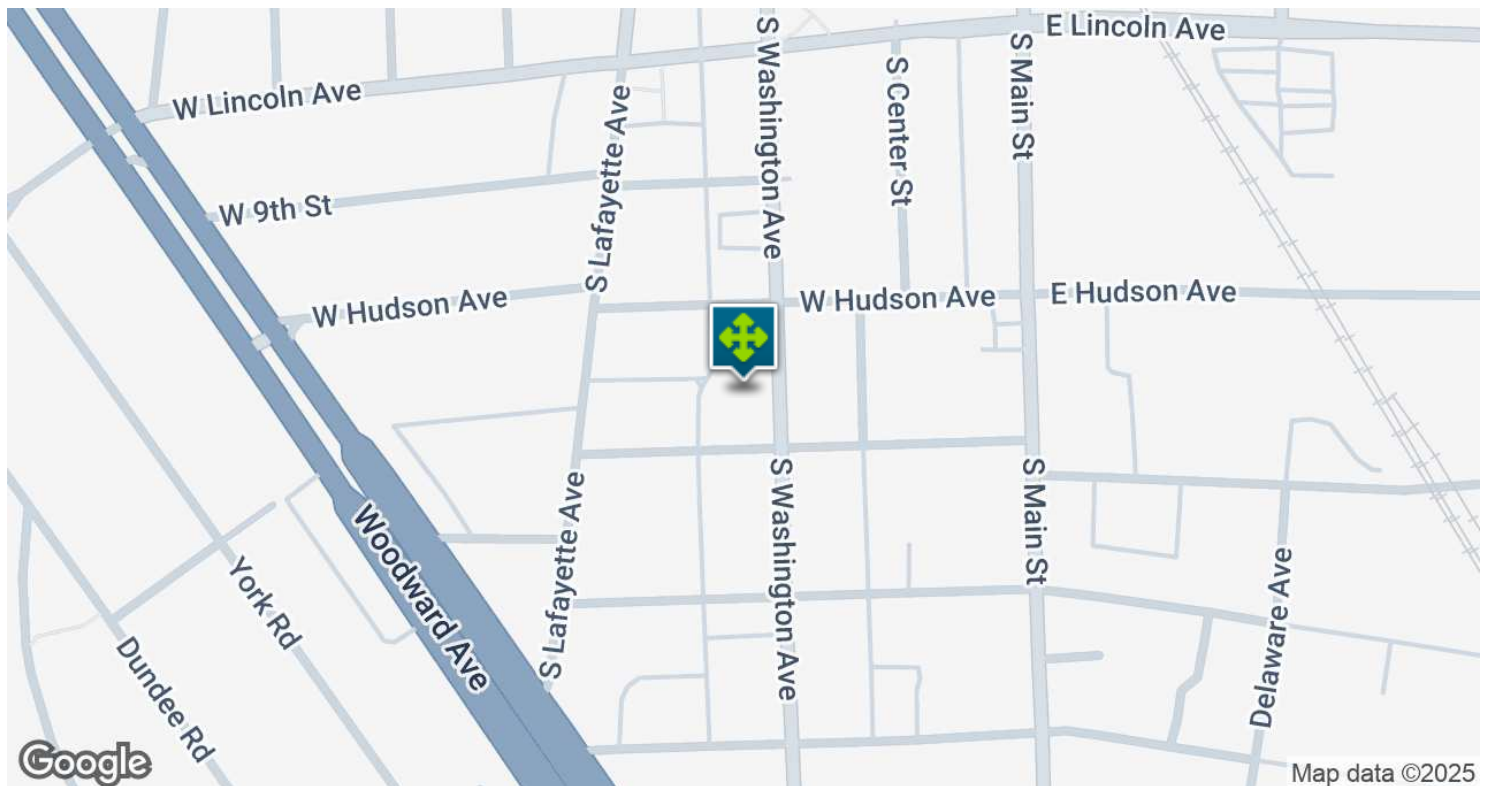
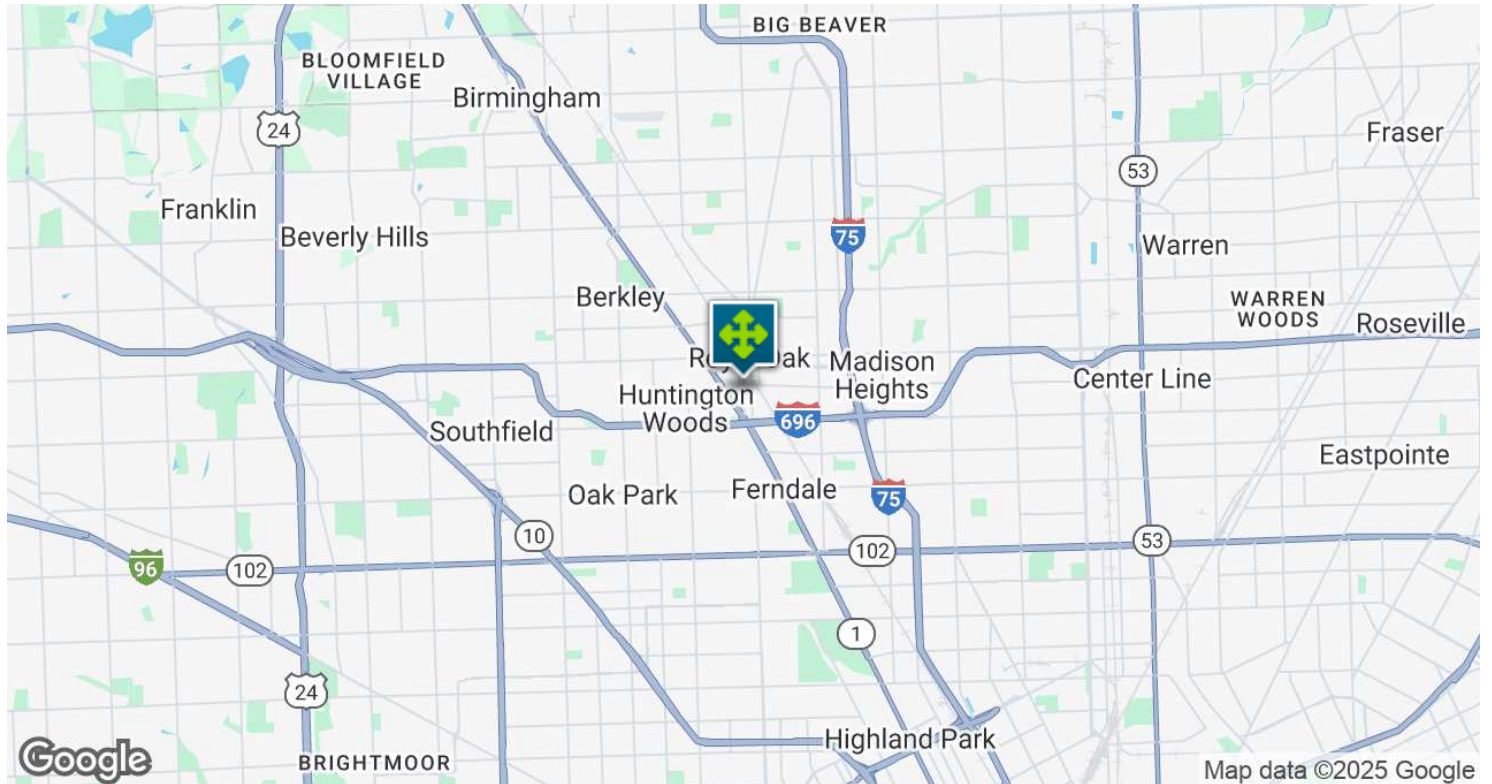


**Dan Blugerman, CCIM** SENIOR ASSOCIATE  
D: 248.987.5418 | C: 248.987.5418  
dan@pacommercial.com



1022 SOUTH WASHINGTON AVE, ROYAL OAK, MI 48067 // FOR LEASE

## LOCATION MAP



**P.A. COMMERCIAL**  
Corporate & Investment Real Estate

We obtained the information above from sources we believe to be reliable. However, we have not verified its accuracy and make no guarantee, warranty or representation about it. It is submitted subject to the possibility of errors, omissions, change of price, rental or other conditions, prior sale, lease or financing, or withdrawal without notice. We include projections, opinions, assumptions or estimates for example only, and they may not represent current, past or future performance of the property. You and your tax and legal advisors should conduct your own investigation of the property and transaction.

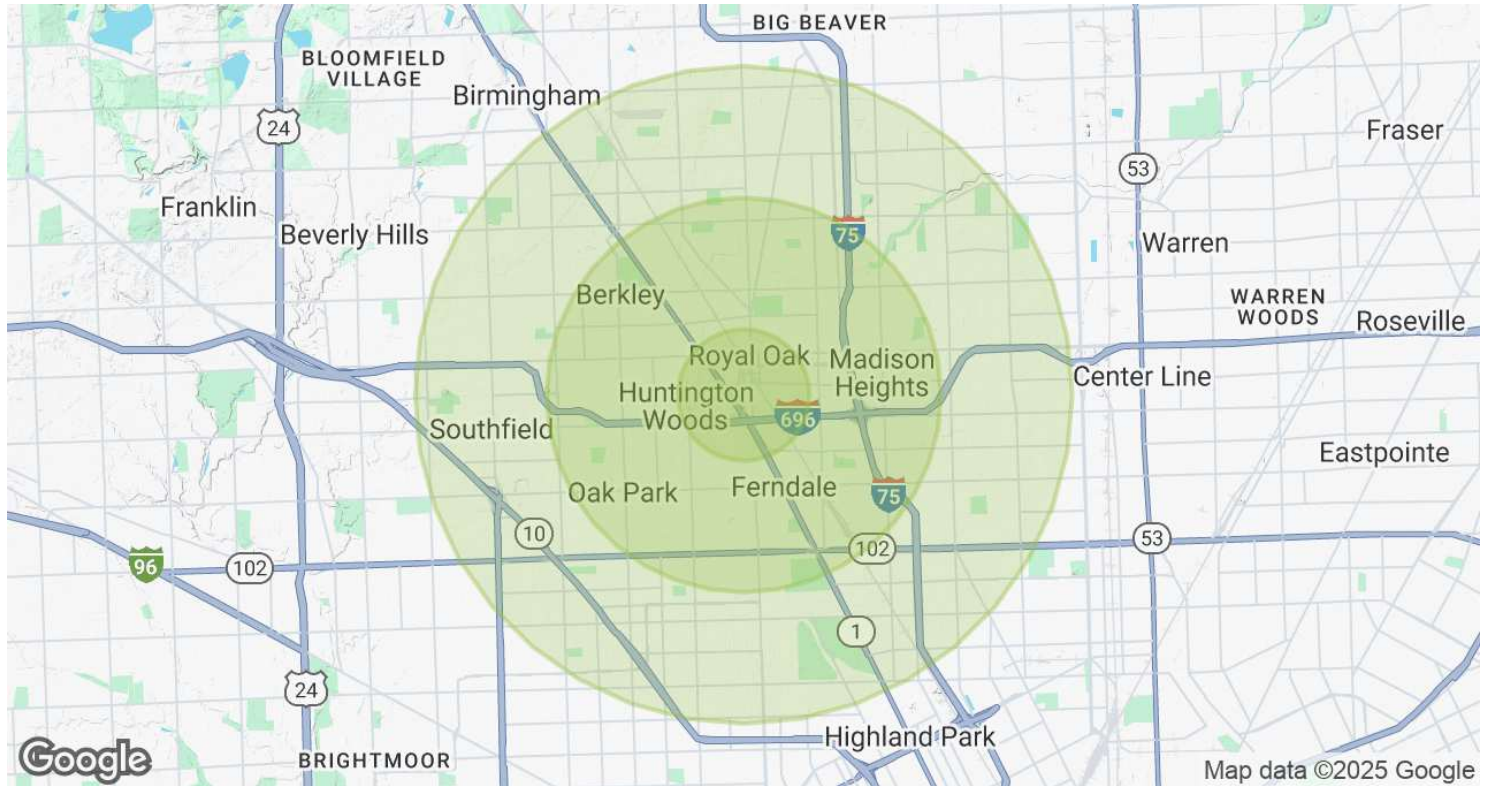
**Dan Blugerman, CCIM** SENIOR ASSOCIATE

**D:** 248.987.5418 | **C:** 248.987.5418

[dan@pacommercial.com](mailto:dan@pacommercial.com)

1022 SOUTH WASHINGTON AVE, ROYAL OAK, MI 48067 // FOR LEASE

## DEMOGRAPHICS MAP & REPORT



POPULATION	1 MILE	3 MILES	5 MILES
Total Population	15,108	147,613	399,827
Average Age	39.7	38.7	38.9
Average Age (Male)	39.6	36.8	36.9
Average Age (Female)	40.2	40.0	40.9

HOUSEHOLDS & INCOME	1 MILE	3 MILES	5 MILES
Total Households	7,178	65,971	171,147
# of Persons per HH	2.1	2.2	2.3
Average HH Income	\$92,244	\$71,701	\$61,627
Average House Value	\$262,679	\$204,867	\$169,190

2020 American Community Survey (ACS)



1022 SOUTH WASHINGTON AVE, ROYAL OAK, MI 48067 // FOR LEASE

CONTACT US



FOR MORE INFORMATION, PLEASE CONTACT:



**Dan Blugerman, CCIM**  
SENIOR ASSOCIATE

**D:** 248.987.5418

**C:** 248.987.5418

[dan@pacommercial.com](mailto:dan@pacommercial.com)

**P.A. Commercial**

26555 Evergreen Road, Suite 1500  
Southfield, MI 48076

**P:** 248.358.0100

**F:** 248.358.5300

[pacommercial.com](http://pacommercial.com)

Follow Us!



**P.A. COMMERCIAL**  
Corporate & Investment Real Estate

We obtained the information above from sources we believe to be reliable. However, we have not verified its accuracy and make no guarantee, warranty or representation about it. It is submitted subject to the possibility of errors, omissions, change of price, rental or other conditions, prior sale, lease or financing, or withdrawal without notice. We include projections, opinions, assumptions or estimates for example only, and they may not represent current, past or future performance of the property. You and your tax and legal advisors should conduct your own investigation of the property and transaction.