

FOR SALE



# Mt. Carmel Avenue & Rices Mill Road

Glenside, PA

1.01 ACRES

## PROPERTY HIGHLIGHTS

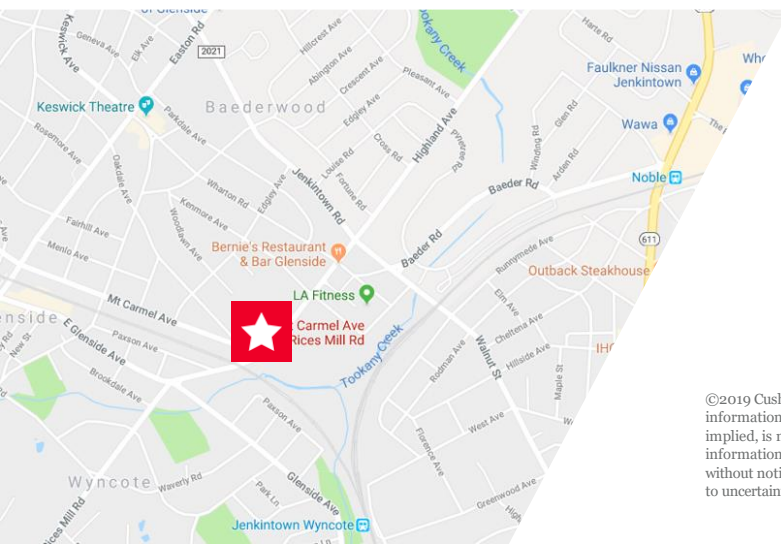
High profile corner of Mt. Carmel Avenue & Rices Mill Road

Zoned R4 - High Density Residential

Walking distance to Keswick Village

Close proximity to both Glenside and Jenkintown train stations of SEPTA's Regional Rail

Utility providers: PECO Energy & Verizon



**JOHN C. SHELLY**  
Senior Director  
+1 610 772 2012  
John.shelly@cushwake.com

**GINA M. BRENNAN**  
Director  
+1 610 772 2013  
Gina.brenna@cushwake.com

1 Fayette Street, Suite 125 | Conshohocken, PA 19428  
Main +1 610 772 2000  
cushmanwakefield.com

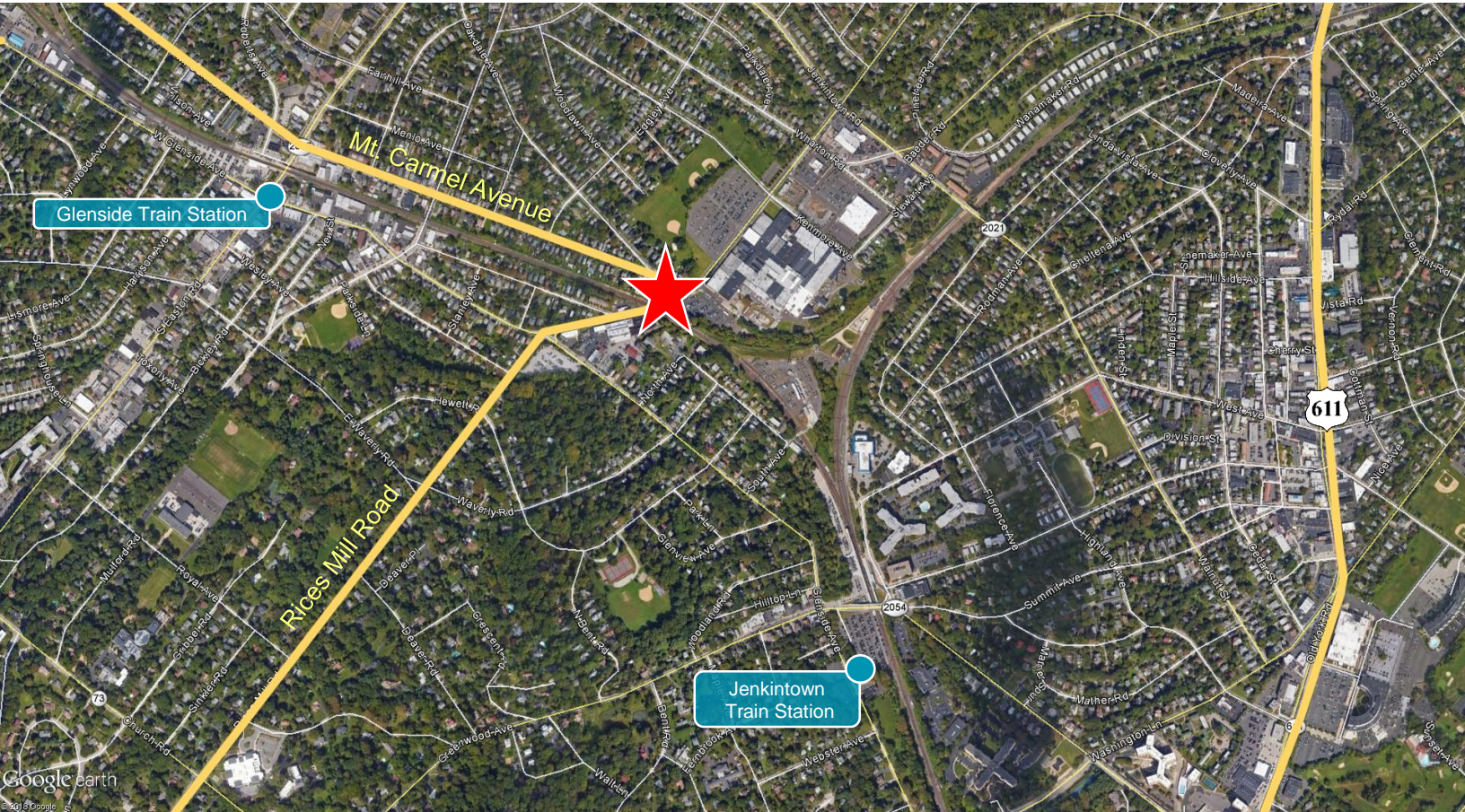
©2019 Cushman & Wakefield. All rights reserved. The information contained in this communication is strictly confidential. This information has been obtained from sources believed to be reliable but has not been verified. No warranty or representation, express or implied, is made as to the condition of the property (or properties) referenced herein or as to the accuracy or completeness of the information contained herein, and same is submitted subject to errors, omissions, change of price, rental or other conditions, withdrawal without notice, and to any special listing conditions imposed by the property owner(s). Any projections, opinions or estimates are subject to uncertainty and do not signify current or future property performance.

# Mt. Carmel Avenue & Rices Mill Road

Glenside, PA



## AERIAL/LOCATION MAP



- ½ mile west to SEPTA's Regional Rail Glenside Station
- ½ mile east to SEPTA's Regional Rail Jenkintown Station
- 1 mile to Route 611