



AMERIPRISE EXECUTIVE CO-WORKING SPACE

Private Executive Office Suites & Dedicated Workstations in Midtown

825 JUNIPER STREET NE, SUITE 125 • MIDTOWN ATLANTA



Position your business in one of Midtown Atlanta's most prestigious and walkable locations. Located within an established Ameriprise Financial office, 825 Juniper Street NE, Suite 125 offers private executive office suites and dedicated workstations available for lease with a minimum one-year term.

This professionally managed office environment provides tenants with a turnkey solution that combines a premier Midtown business address, fully furnished workspace, and access to a wide range of shared amenities — ideal for financial professionals, attorneys, consultants, insurance agents, accountants, real estate professionals, and other business service providers seeking a professional office environment without the expense of leasing a larger traditional office suite.

- Min. 1-Year Term
- Fully Furnished
- Covered Parking
- Reception & Admin Support
- Immediate Occupancy



Property Highlights

- ◆ Private executive office suites available for lease
- ◆ Dedicated workstations available for lease
- ◆ Minimum one-year lease term
- ◆ Fully furnished offices and workspaces
- ◆ Reception and administrative support available
- ◆ Large & secondary conference room access
- ◆ Covered parking included
- ◆ Prestigious Midtown Atlanta business address
- ◆ Walkable to dining, hotels & entertainment
- ◆ Immediate occupancy available

Included Amenities

- ◆ Fully furnished private executive office suites
- ◆ Dedicated workstations in a professional open office
- ◆ Large conference room for client presentations
- ◆ Secondary conference room for smaller meetings
- ◆ Copy, mail, and file room
- ◆ Fully stocked break area — coffee & refreshments
- ◆ High-speed internet access
- ◆ Covered parking
- ◆ Utilities & common area services included
- ◆ Reception and administrative support available

Business Support Services

A unique advantage of this offering is the availability of reception and administrative support services. Tenants may benefit from professional administrative assistance, client coordination, scheduling support, document preparation, and general office support — creating a highly efficient and professional business environment without the overhead associated with maintaining full-time administrative staff.

Exceptional Midtown Location

Situated in the heart of Midtown Atlanta, this location offers exceptional walkability to many of the city's most popular restaurants, hotels, coffee shops, fitness centers, and entertainment destinations. Employees and clients enjoy convenient access to Piedmont Park, Peachtree Street, Colony Square, and numerous cultural attractions. The property is conveniently located near MARTA rail service, Georgia Tech, Piedmont Park, and the I-75/I-85 Connector, providing outstanding accessibility throughout Metro Atlanta.

Ideal For

- Financial Advisors
- Wealth Managers
- Attorneys
- CPAs & Accounting Firms
- Insurance Professionals
- Consultants
- CRE Professionals
- Technology Companies
- Sales Professionals
- Entrepreneurs & Small Business Owners


AVAILABLE FOR LEASE

Private Executive Suites

Two fully furnished private executive suites are currently available within Suite 125. Each offers a professional, move-in-ready environment with full access to the building's shared amenities, conference rooms, and administrative support services.

Executive Suite #9

AVAILABLE NOW




APPROX. SIZE	MONTHLY RATE
110 SF • 10' × 11'	\$1,287 / month
LEASE TERM	OCCUPANCY
12-Month Minimum	Available Now

Private executive suite with two windows. Fully furnished with an executive desk and a round meeting table — well suited for client meetings. Includes full access to shared conference rooms, amenities, and administrative support.

Executive Suite #2

AVAILABLE NOW



APPROX. SIZE	MONTHLY RATE
132 SF • 11' × 12'	\$1,431 / month
LEASE TERM	OCCUPANCY
12-Month Minimum	Available Now

Private executive suite with two windows. Fully furnished with an executive desk, file/storage cabinet, and a round meeting table — ideal for client meetings. Includes full access to shared conference rooms, amenities, and administrative support.



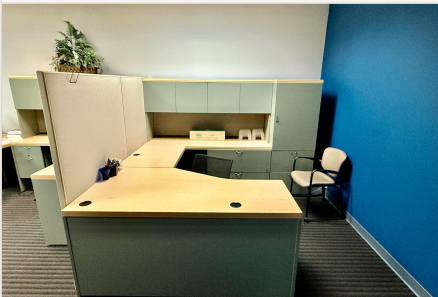
AVAILABLE FOR LEASE

Dedicated Workstations

Two dedicated workstations are available within the professional open office environment — an ideal, cost-effective solution for individuals who need a permanent, fully furnished workspace with full access to shared amenities, conference rooms, and administrative support.

Executive Corner Workstation #1

AVAILABLE NOW



WORKSPACE TYPE

Corner Workstation

MONTHLY RATE

\$972 / month

LEASE TERM

12-Month Minimum

OCCUPANCY

Available Now

A dedicated executive corner workstation within the professional open office environment, with full access to the shared conference rooms, amenities, and administrative support services.

Executive Workstation #2

AVAILABLE NOW



WORKSPACE TYPE

Dedicated Workstation

MONTHLY RATE

\$908 / month

LEASE TERM

12-Month Minimum

OCCUPANCY

Available Now

A dedicated executive workstation within the professional open office environment, with full access to the shared conference rooms, amenities, and administrative support services.

LISTING BROKER

David Mauer

Broker / Principal • Graham & Arthur Commercial Real Estate

404-685-3700

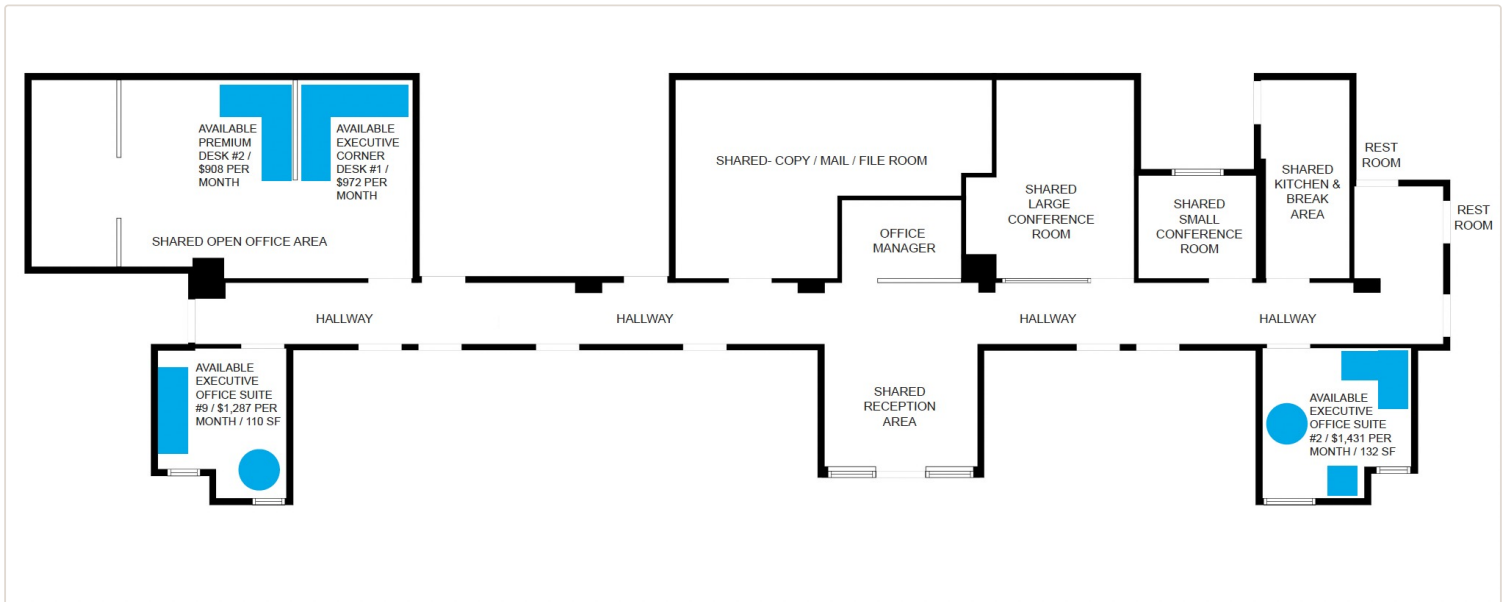
David@GrahamArthur.com

GrahamArthur.com

AMERIPRISE EXECUTIVE CO-WORKING SPACE

Floor Plan

The available executive office suites and workstation desks are highlighted in blue. Tenants share the reception area, conference rooms, copy/mail/file room, kitchen and break area, and other common amenities throughout the suite.

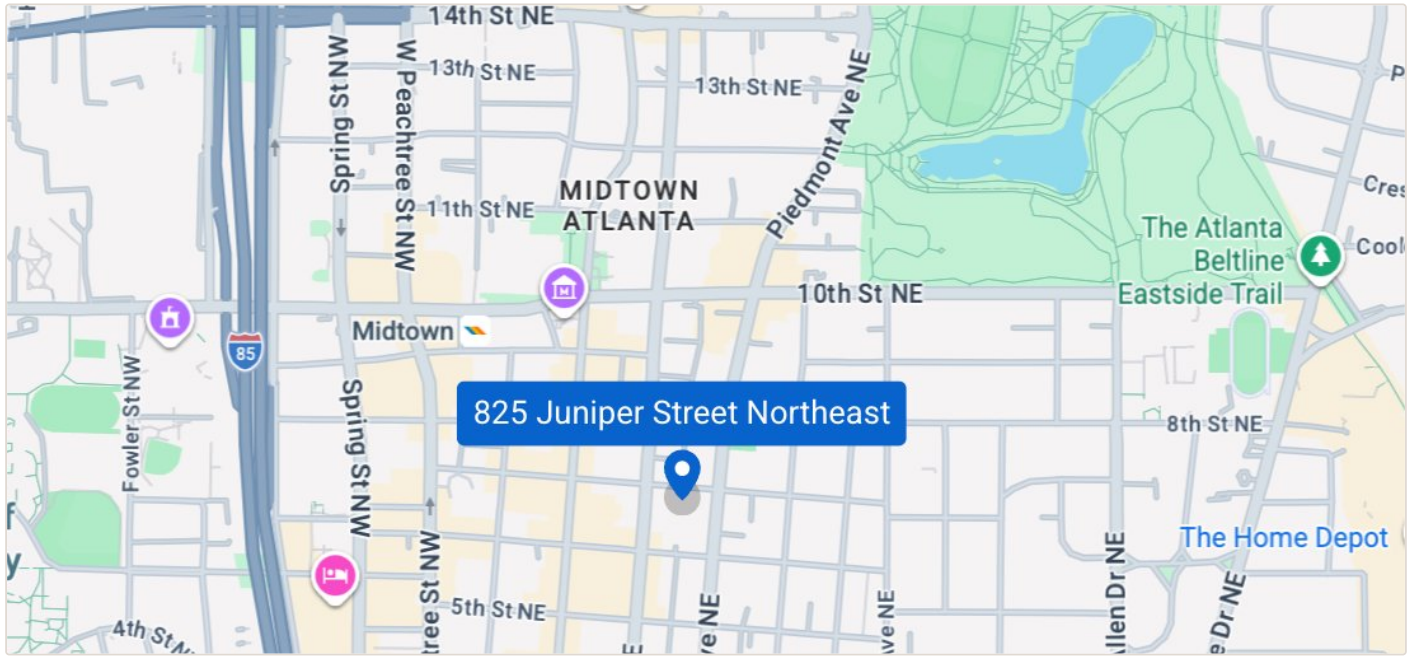


Available Spaces

- Executive Office Suite #2 — 132 SF • \$1,431/mo
- Executive Office Suite #9 — 110 SF • \$1,287/mo
- Executive Corner Desk #1 — \$972/mo
- Premium Desk #2 — \$908/mo

IN THE HEART OF MIDTOWN ATLANTA

Location & Neighborhood



The property's premier Midtown location places tenants within walking distance of many of Atlanta's most popular dining destinations, including South City Kitchen, The Consulate, Establishment, Bulla Gastrobar, Rumi's Kitchen, STK Steakhouse, Lazy Betty, Campagnolo, and Ecco. Nearby Colony Square further expands the area's dining and entertainment offerings with favorites such as Holman & Finch Public House, Saints + Council, and Jojo's Beloved Cocktail Lounge. Whether hosting a client lunch, meeting colleagues for coffee, or entertaining prospective customers, tenants enjoy immediate access to Midtown's vibrant culinary and social scene — all just steps from the office.

Walkable Dining

- South City Kitchen
- The Consulate
- Establishment
- Bulla Gastrobar
- Rumi's Kitchen
- STK Steakhouse
- Lazy Betty
- Campagnolo
- Ecco

At Colony Square

- Holman & Finch Public House
- Saints + Council
- Jojo's Beloved Cocktail Lounge