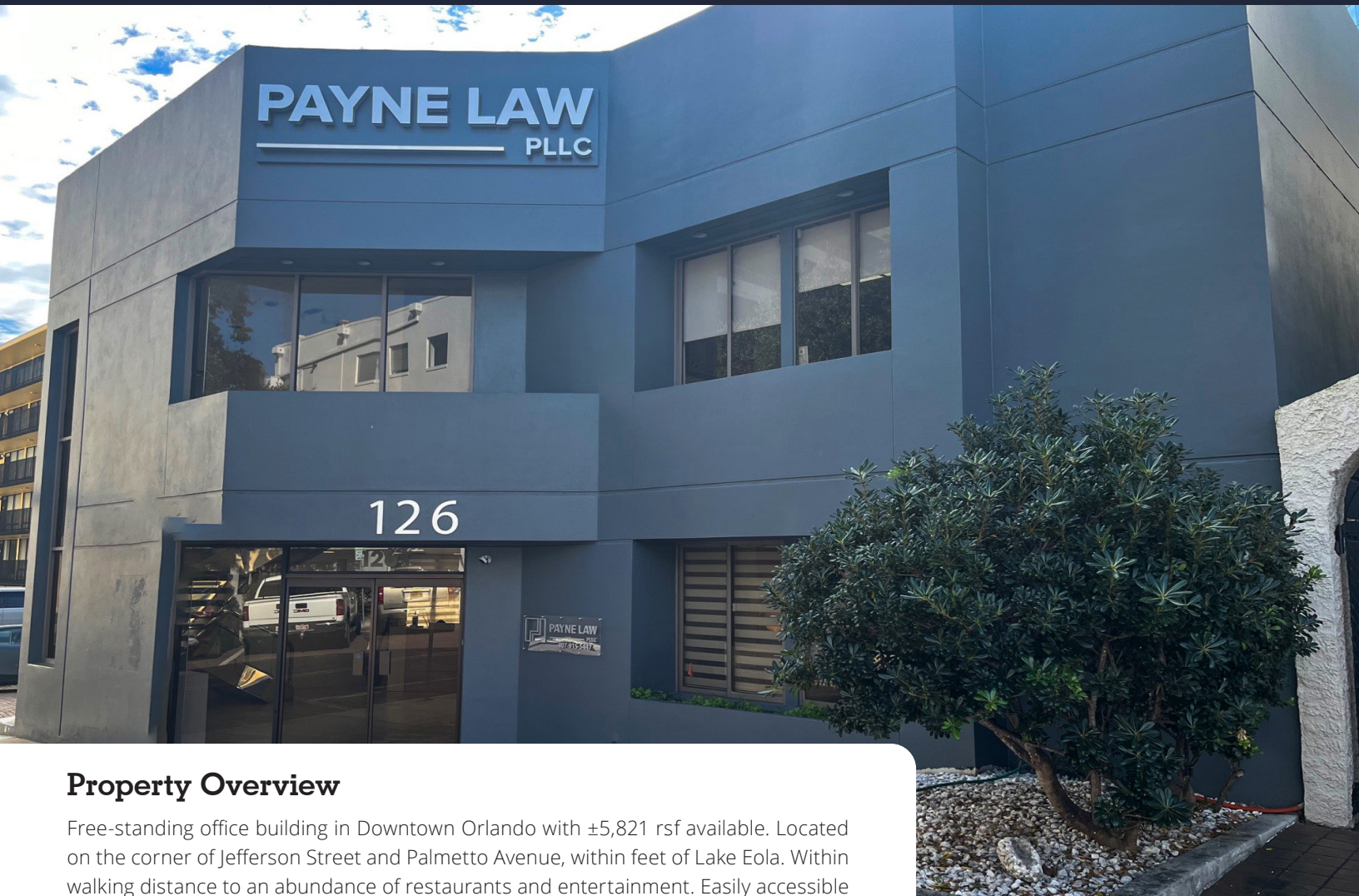


Downtown Orlando Office Sublease

126 E. Jefferson Street | Orlando, FL 32801



Property Overview

Free-standing office building in Downtown Orlando with $\pm 5,821$ rsf available. Located on the corner of Jefferson Street and Palmetto Avenue, within feet of Lake Eola. Within walking distance to an abundance of restaurants and entertainment. Easily accessible to major thoroughfares such as Interstate-4, State Road 408, and State Road 50 (Colonial Drive).

Property Stats

Building SF	$\pm 5,821$ sf
Zoning	ORL-AC-3A/T
Year Built	1977
Parking	Multiple garage options nearby
Term	Sublease expires 06/15/2027

For further information

Greg Morrison, CCIM, SIOR
Principal, Managing Director
+1 407 440 6640
greg.morrison@avisonyoung.com

**AVISON
YOUNG**

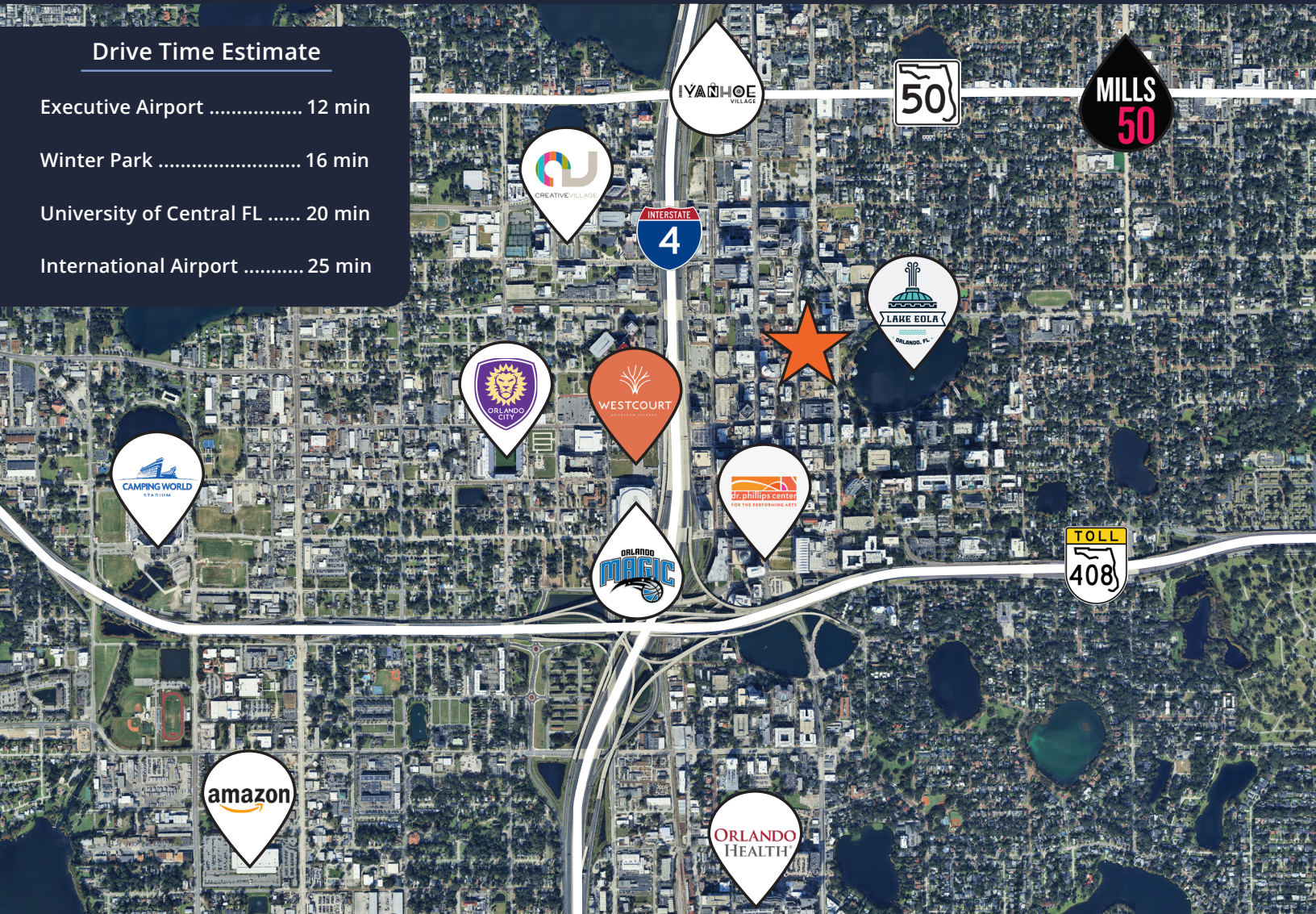
© 2024 Avison Young - Florida, LLC. All rights reserved. E. & O.E.: The information contained herein was obtained from sources which we deem reliable and, while thought to be correct, is not guaranteed by Avison Young.

For Sublease | Downtown Office Building

126 E. Jefferson Street
Orlando, FL 32801

Drive Time Estimate

- Executive Airport 12 min
- Winter Park 16 min
- University of Central FL 20 min
- International Airport 25 min




Drive Time Demographics (5 Miles)


298,129
Population


124,681
Households


\$107,579
Average HH income


2.32
Average HH size


331,286
Employees

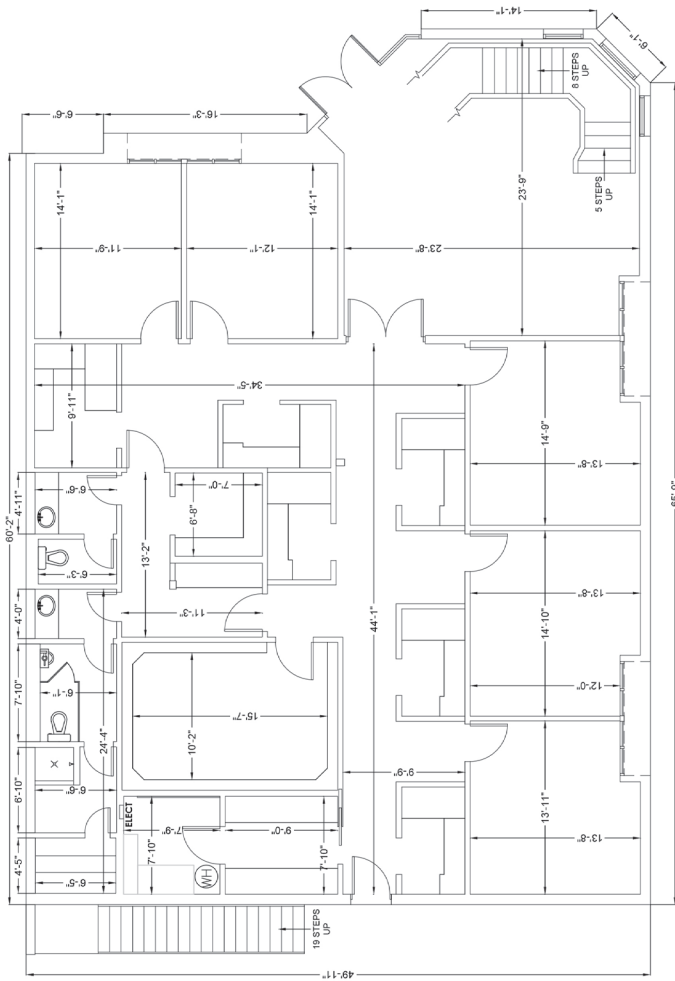
**For further
information**

Greg Morrison, CCIM, SIOR
Principal, Managing Director
+1 407 440 6640
greg.morrison@avisonyoung.com

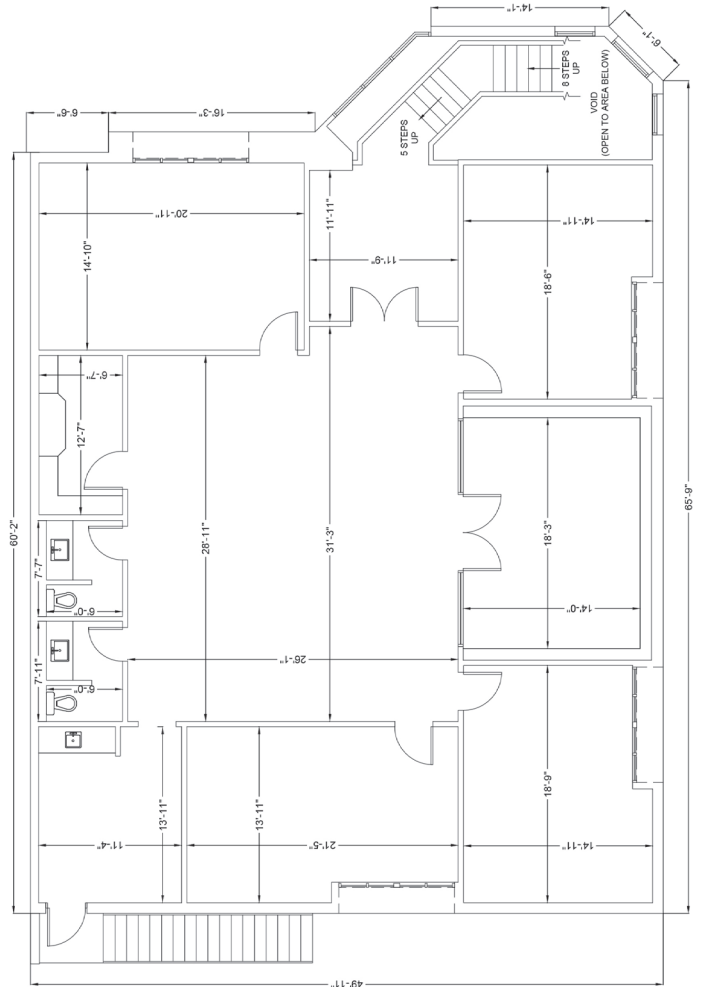
**AVISON
YOUNG**

Building Floorplan

First Floor



Second Floor



**For further
information**

Greg Morrison, CCIM, SIOR
Principal, Managing Director
+1 407 440 6640
greg.morrison@avisonyoung.com

**AVISON
YOUNG**