

415 N. LAFAYETTE STREET  
SOUTH LYON, MICHIGAN

INDUSTRIAL FOR SALE  
37,450 Square Feet Available



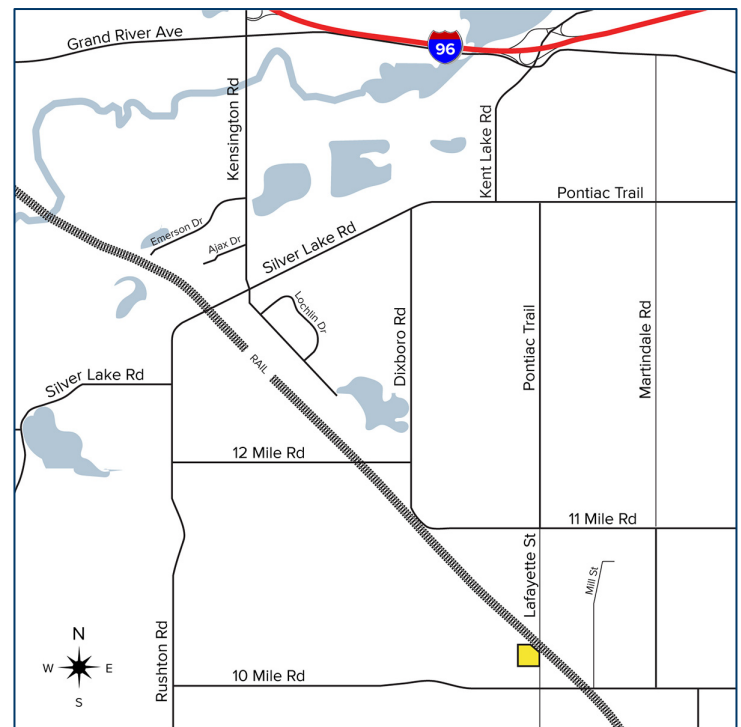
**SIGNATURE  
ASSOCIATES**  
KNOW SIGNATURE | KNOW RESULTS

**TWO-BUILDINGS/EXTRA LAND**



## PROPERTY FEATURES

- Two-building complex totaling 37,450 sq. ft. on 4.2 acres
- Building 1: Includes offices, showroom, and warehouse with 2 overhead doors and 4 truckwells
- Building 2: 18,000 sq. ft. (60'x300'), built in 2019, clear span with 20' clearance, 3 overhead doors and 2 truckwells
- Fenced lot
- Seller financing possible
- Contact brokers for pricing



For more information, please contact:

**JEFF LEMANSKI**  
(248) 359 0641  
jlemanski@signatureassociates.com

**STEVE GORDON**  
(248) 948 0101  
sgordon@signatureassociates.com

**SIGNATURE ASSOCIATES**  
One Towne Square, Suite 1200  
Southfield, MI 48076  
www.signatureassociates.com

415 N. Lafayette Street, South Lyon, Michigan  
Industrial For Sale

37,450  
Square Feet  
AVAILABLE

Exterior Photos



For more information, please contact:

**JEFF LEMANSKI**  
(248) 359 0641  
jlemanski@signatureassociates.com

**STEVE GORDON**  
(248) 948 0101  
sgordon@signatureassociates.com

**SIGNATURE ASSOCIATES**  
One Towne Square, Suite 1200  
Southfield, MI 48076  
www.signatureassociates.com

415 N. Lafayette Street, South Lyon, Michigan  
Industrial For Sale

37,450  
Square Feet  
AVAILABLE

Interior Photos



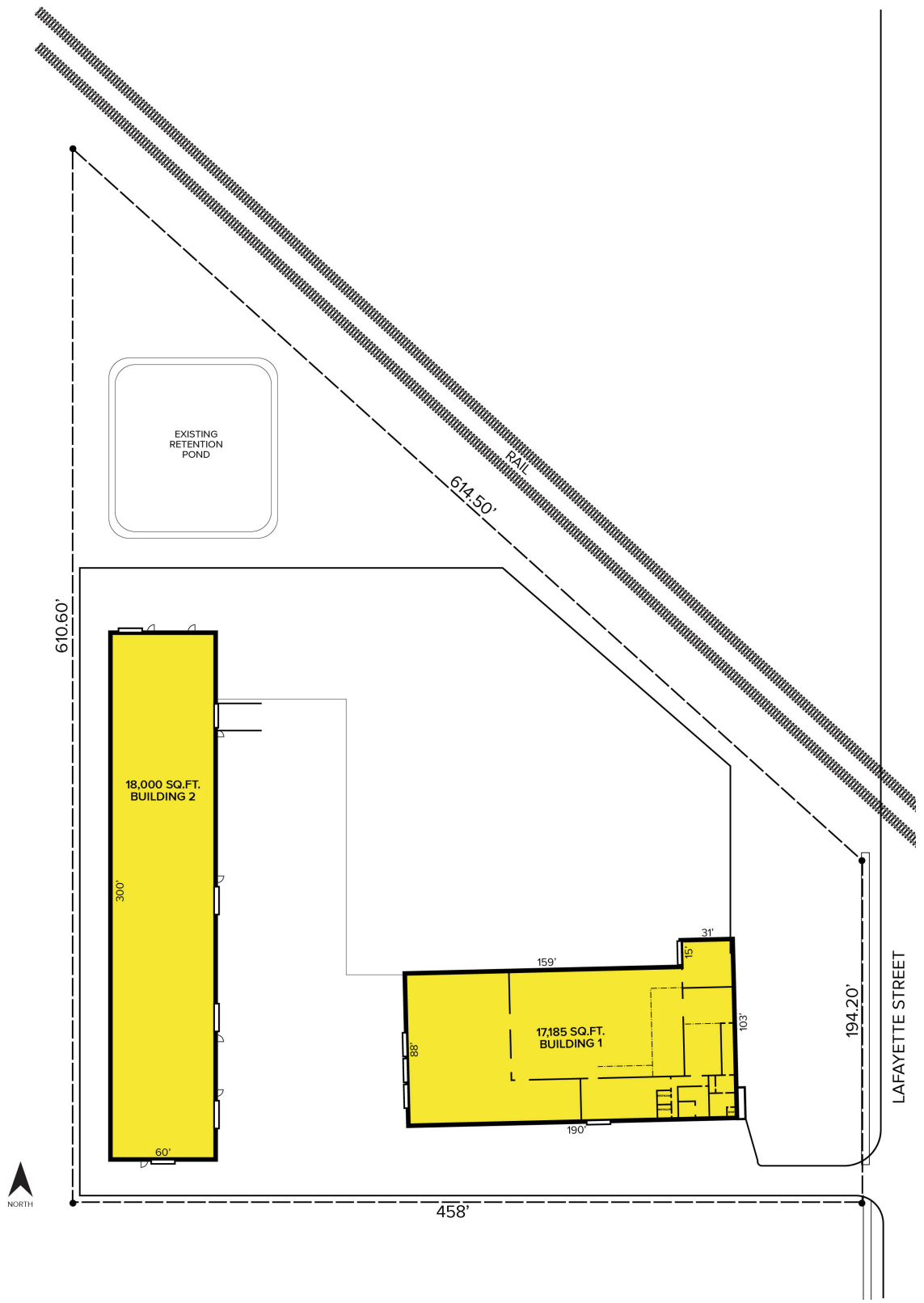
For more information, please contact:

**JEFF LEMANSKI**  
(248) 359 0641  
jlemanski@signatureassociates.com

**STEVE GORDON**  
(248) 948 0101  
sgordon@signatureassociates.com

**SIGNATURE ASSOCIATES**  
One Towne Square, Suite 1200  
Southfield, MI 48076  
www.signatureassociates.com

Site Plan



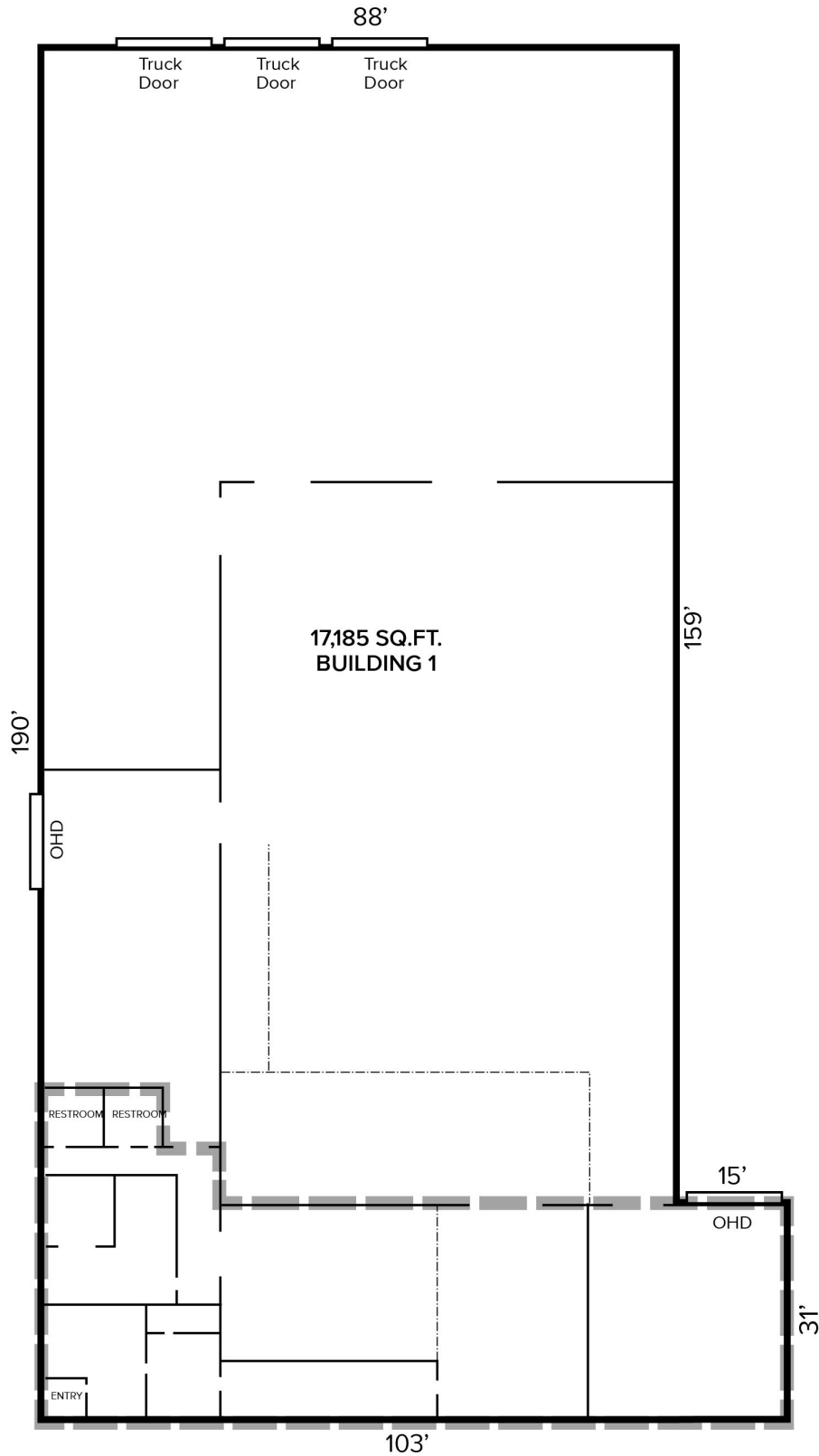
For more information, please contact:

**JEFF LEMANSKI**  
(248) 359 0641  
jlemanski@signatureassociates.com

**STEVE GORDON**  
(248) 948 0101  
sgordon@signatureassociates.com

**SIGNATURE ASSOCIATES**  
One Towne Square, Suite 1200  
Southfield, MI 48076  
www.signatureassociates.com

Floor Plan – Building 1



For more information, please contact:

**JEFF LEMANSKI**  
(248) 359 0641  
jlemanski@signatureassociates.com

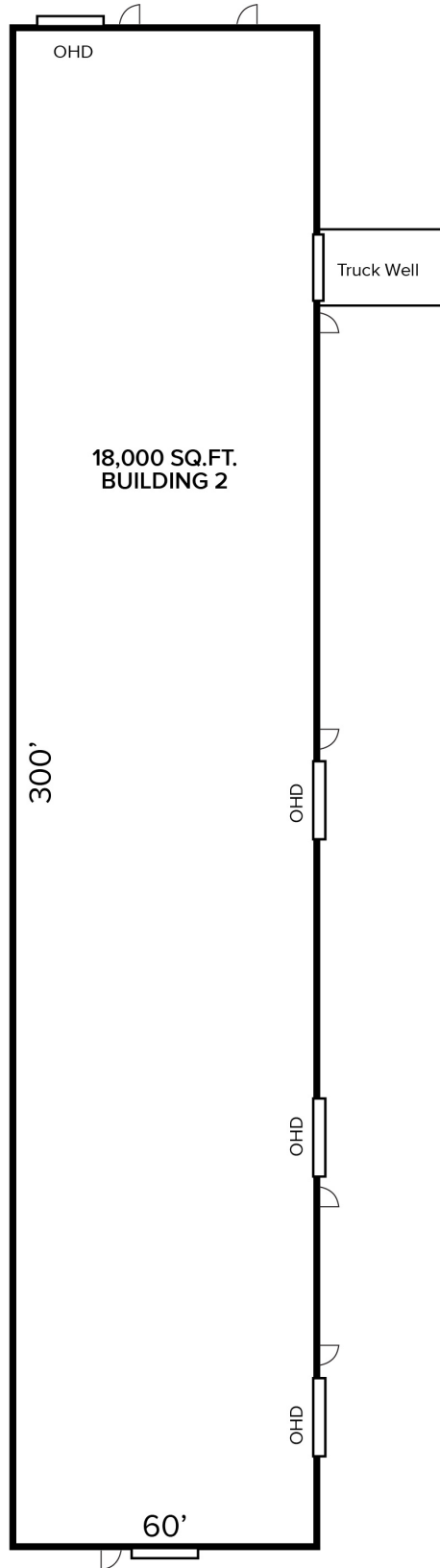
**STEVE GORDON**  
(248) 948 0101  
sgordon@signatureassociates.com

**SIGNATURE ASSOCIATES**  
One Towne Square, Suite 1200  
Southfield, MI 48076  
www.signatureassociates.com

415 N. Lafayette Street, South Lyon, Michigan  
Industrial For Sale

37,450  
Square Feet  
AVAILABLE

Floor Plan – Building 2



For more information, please contact:

**JEFF LEMANSKI**  
(248) 359 0641  
jlemanski@signatureassociates.com

**STEVE GORDON**  
(248) 948 0101  
sgordon@signatureassociates.com

**SIGNATURE ASSOCIATES**  
One Towne Square, Suite 1200  
Southfield, MI 48076  
www.signatureassociates.com