



FOR SUBLEASE

# 9800 Bustleton Avenue

PHILADELPHIA, PA 19115

## Space Highlights

- 12,200± SF available immediately
- Abundant natural light with a bank of windows
- 9' finished ceilings
- 20 lined parking spaces directly in front, with potential for expansion
- Monument and building exterior signage available
- Base Zoning: I-2 Medium Industrial
- Asking \$15.00/SF, NNN
- Sublease term flexible; master lease expires 1/31/2035



For information, please contact:

**Justin Bell**  
Senior Managing Director  
t 610-755-6979  
justin.bell@nmrk.com

1000 Continental Drive, Suite 200  
King of Prussia, PA 19406

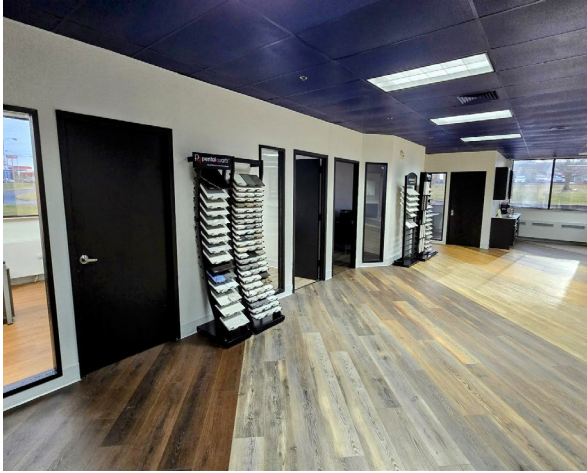


[nmrk.com](http://nmrk.com)

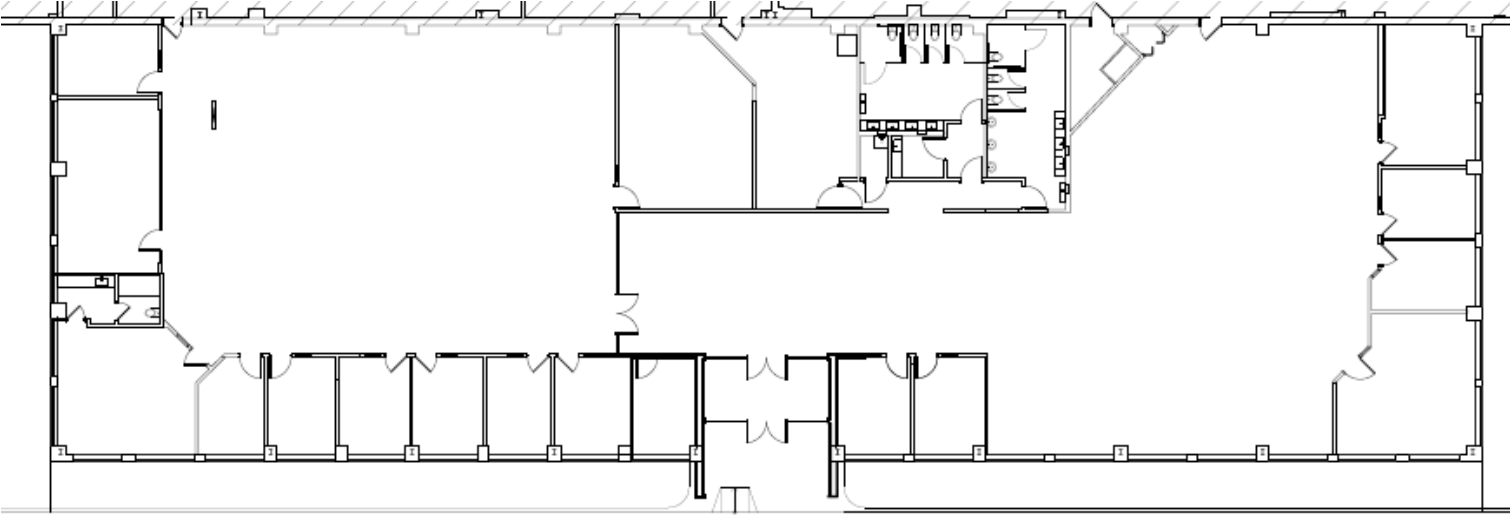
# NEWMARK

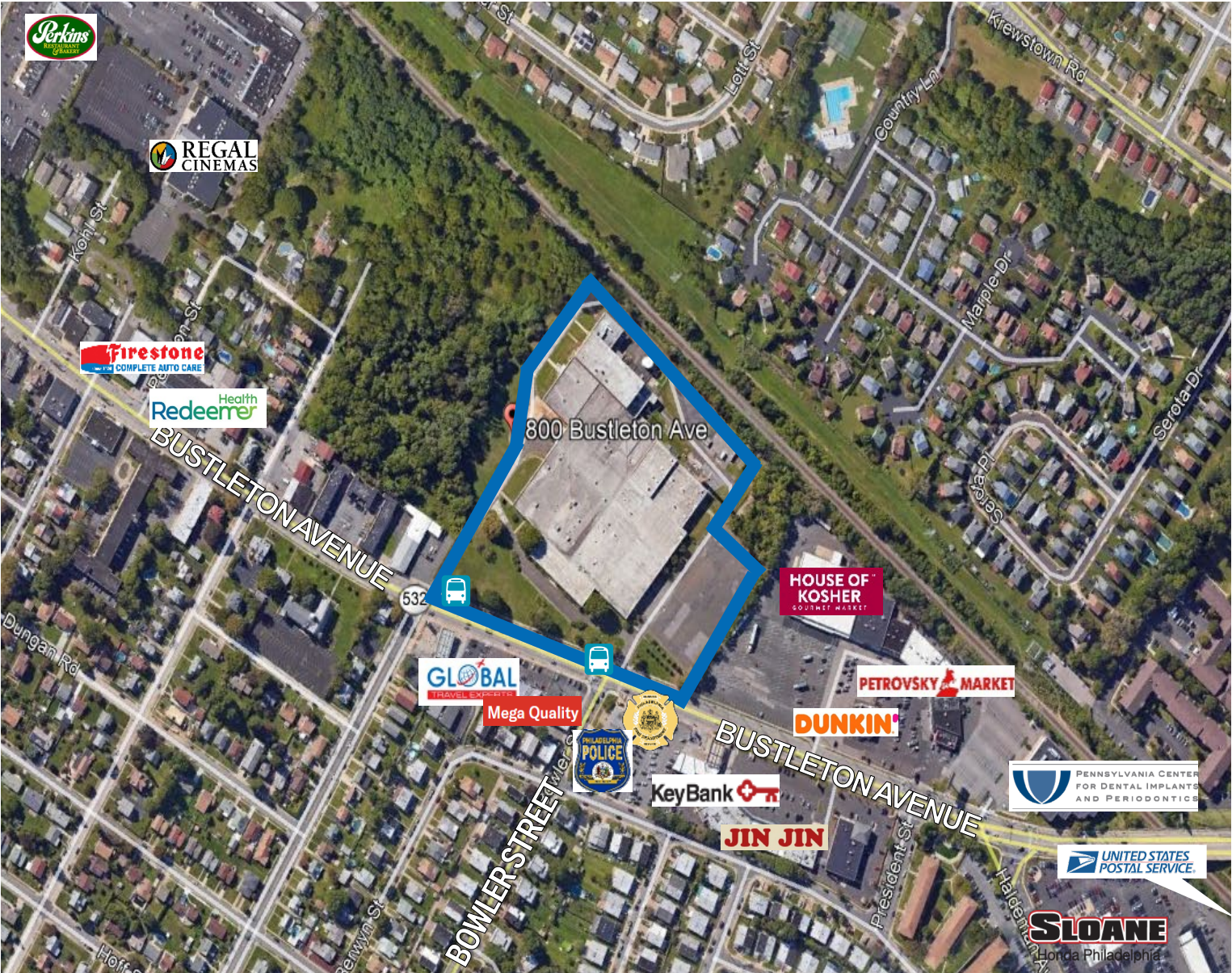
Licensed in Pennsylvania as Newmark Real Estate

The information contained herein has been obtained from sources deemed reliable but has not been verified and no guarantee, warranty or representation, either express or implied, is made with respect to such information. Terms of sale or lease and availability are subject to change or withdrawal without notice.



9800 BUSTLETON AVENUE SUBLEASE





**I-2 MEDIUM INDUSTRIAL ZONING** (click for code)

**OVERLAY ZONING**

Unless otherwise specified, these Overlays override the Bose Zoning (link above) if they conflict.

**CLICK ON LINK FOR OVERLAY**

- [14-511](#) /AHC Airport Hazard Control Overlay District
- [14-514](#) /FNE Far Northeast Overlay District
- [14-515\(1\)\(b\)](#) /NE Northeast Overlay District - Map B
- [14-603\(5\)](#) Use-Specific Standards - Child Care - Family Child Care - Area 1 and Area 2
- [14-540](#) /NIS Narcotics Injection Sites Overlay District