

# The Tower @ 7800

7800 Madison Blvd. Huntsville, Alabama 35806

**650-9,800 Sq Ft**  
**Office Space - For Lease**



## Location



## Property Highlights

- Enjoy breathtaking panoramic views of the cityscape and beyond from every angle
- Immerse yourself in a world of contemporary elegance with sleek and stylish interiors
- Situated at the vibrant crossroads of Madison Blvd, easy access to I-565
- Seamlessly integrate your business with cutting-edge technology infrastructure and connectivity
- Experience peace of mind with advanced security features and 24/7 surveillance
- Secure a strategic location for your business with promising growth and value appreciation

**NAI Chase Commercial**

Commercial Real Estate Services, Worldwide.

P.O. Box 18153, Huntsville, AL 35804  
[www.chasecommercial.com](http://www.chasecommercial.com)

**Erik Amason**

[davisr@chasecommercial.com](mailto:davisr@chasecommercial.com)

**D 256 319 3505**

**C 703 405 9880**

**Charlie Grelier, Jr.**

[cgj@chasecommercial.com](mailto:cgj@chasecommercial.com)

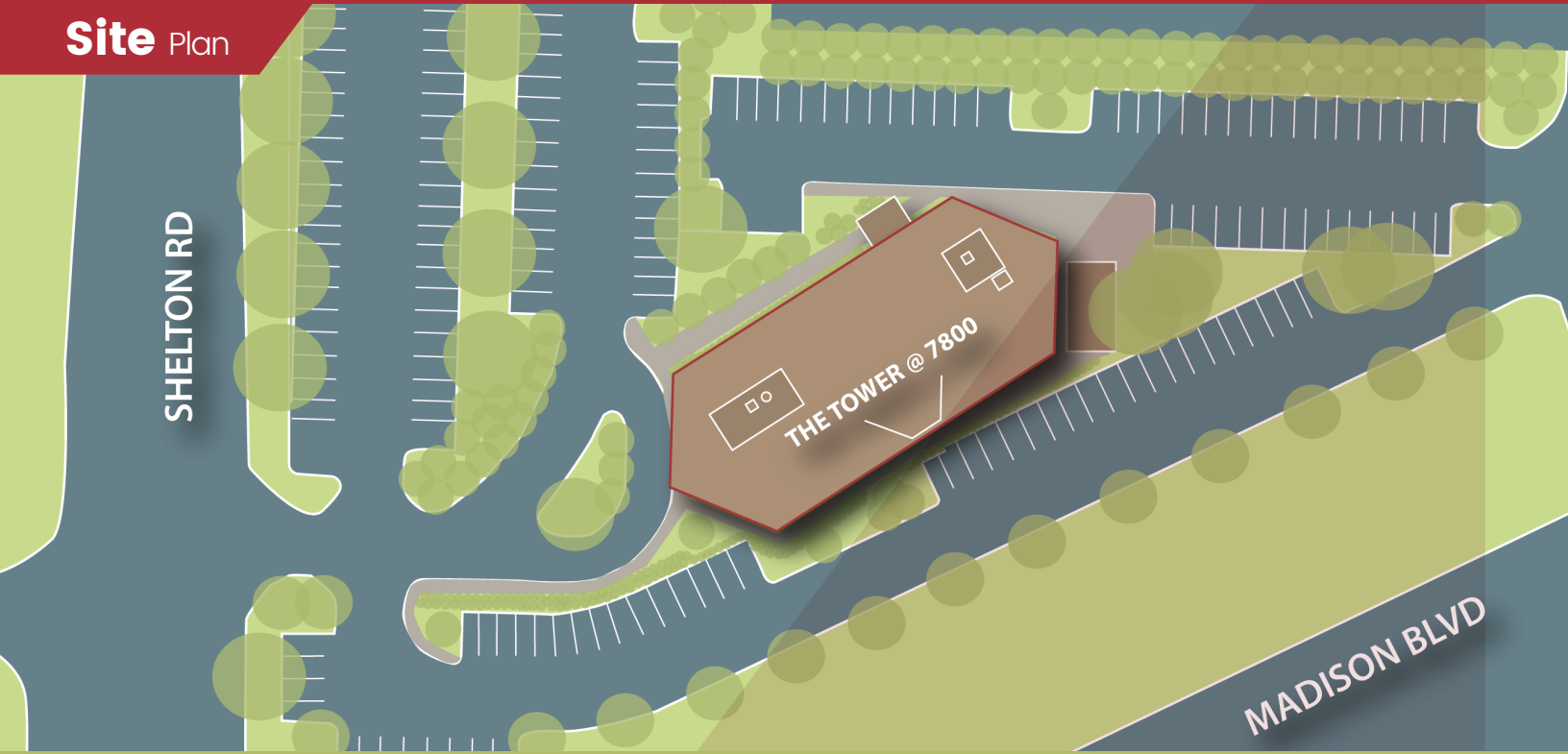
**D 256 319 3504**

**C 256 783 4160**

# The Tower @ 7800

7800 Madison Blvd. Huntsville, Alabama 35806

## Site Plan



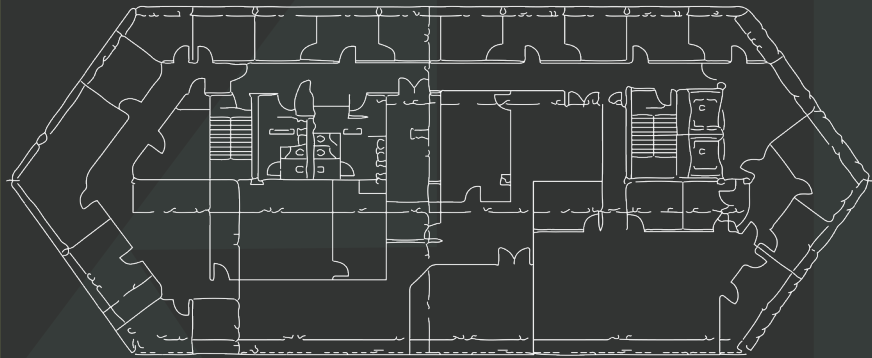
## Location Advantages

The Tower presents an array of exceptional location advantages. Its strategic positioning provides swift access to major thoroughfares, ensuring seamless connections to key destinations. The proximity to dynamic business districts and tech hubs positions you at the forefront of innovation and collaboration. Revel in stunning skyline vistas, a testament to the prime vantage point this address offers. Additionally, an abundance of dining, entertainment, and leisure options lie within easy reach, enhancing work-life balance. With its central location, impressive accessibility, and the pulse of a thriving community.

*For more information and to see other available properties, check out this listing at [chasecommercial.com](http://chasecommercial.com) or scan the QR code on your mobile device*



## Floor Plan



TYPICAL FLOOR PLAN

**NAI Chase Commercial**

Commercial Real Estate Services, Worldwide.

P.O. Box 18153, Huntsville, AL 35804

[www.chasecommercial.com](http://www.chasecommercial.com)



INDIVIDUAL MEMBERSHIPS

NO WARRANTY OR REPRESENTATION, EXPRESS OR IMPLIED, IS MADE AS TO THE ACCURACY OF THE INFORMATION CONTAINED HEREIN, AND THE SAME IS SUBMITTED SUBJECT TO ERRORS, OMISSIONS, CHANGE OF PRICE, RENTAL OR OTHER CONDITIONS, PRIOR SALE, LEASE OR FINANCING, OR WITHDRAWAL WITHOUT NOTICE, AND OF ANY SPECIAL LISTING CONDITIONS IMPOSED BY OUR PRINCIPAL. NO WARRANTIES OR REPRESENTATIONS ARE PROPERTY OR HAZARDS CONTAINED THEREIN.